

Product datasheet for **RC220760**

C14orf118 (GPATCH2L) (NM_017972) Human Tagged ORF Clone

Product data:

Product Type:	Expression Plasmids
Product Name:	C14orf118 (GPATCH2L) (NM_017972) Human Tagged ORF Clone
Tag:	Myc-DDK
Symbol:	C14orf118
Synonyms:	C14orf118
Mammalian Cell Selection:	Neomycin
Vector:	pCMV6-Entry (PS100001)
E. coli Selection:	Kanamycin (25 ug/mL)



[View online »](#)

ORF Nucleotide Sequence:

>RC220760 representing NM_017972
 Red=Cloning site Blue=ORF Green=Tags(s)

TTTTGTAATACGACTCACTATAGGGCGGCCGGAATTCGTCGACTGGATCCGGTACCGAGGAGATCTGCC
 GCC**CGCATCGCC**

ATGGATGAGCTGGTACACGACTTAGCCTCAGCCTTGGAGCAGACATCTGAGCAGAATAAGCTTGGTGAAC
 TGTGGGAGGAGATGGCGCTGAGCCCCGACAGCAGAGGCGGCAGCTTCGGAACGCCGAGGTCTGGAAGCG
 TCGTTCTGACTTCACTCACCTGGCAGAGCATACCTGCTGTACAGCGAGGCCTCTGAGTCAAGTCTGGAT
 GAGGCCACTAAGGACTGTCGAGAAGTGGCTCCGGTGACCAATTTTAGTACTCTGATGACACAATGGTAG
 CCAAACGACACCCAGCTCTCAATGCCATTGTCAAGAGTAAGCAACATTCTTGGCATGAATCTGACTCCTT
 TACTGAAAATGCACCTTGTGACCCTCAGGCGCAGGCGGAAGGTGAAGCGAGTGACATCAGAGGTGGCT
 GCTAGCCTTCAGCAGAAGCTGAAGGTGTCAGATTGGAGCTATGAGAGAGGCTGCAGGTTCAAGTCTGCTA
 AGAAGCAGCGTCTGTCCCGCTGGAAGGAGAATACTCCCTGGACCTCATCAGGCCACGGATTGTGTGAATC
 AGCAGAAAATAGGACTTTCCTAAGCAAAACAGGAAGGAAAGAAAGGATGGAGTGTGAAACAGATGAACAA
 AACAGGGCTCTGATGAGAACATGTCAGAAATGTGAAACCAGCAGTGTGTGTAGCAGCAGTGACACTGGGC
 TCTTTACCAATGATGAAGGGCGACAAGGTGATGACGAACAGAGTGATTGGTTCTATGAAGGAGAATGTGT
 CCCAGGATCACTGTCCCTAATCTTCTGCCAAGTGGGCTCCTGATCATTGTTCTGAAGTAGAAAGAATG
 GATTCTGGATTGGATAAAATTTTCAGATTCCACATTCCTTTTACCTTCTCGGCCAGCTCAAAGAGGGTACC
 ATACTCGTTGAATCGTCTACCTGGAGCTGCAGCTCGATGCCTCAGAAAGGGGCGAAGAAGGCTGGTTGG
 GAAGGAGACCAGCATAAACACTTTGGGGACTGAGAGGTAAGCCATATCATTAGTGACCCTCGGCAGAAA
 GATTTCTGGTTACCATCAGCTGGGAAAAGAGAACGAAATCAGTTCAATCCCCTGTCTCCCCTTTACTCCC
 TGGATGTTCTTGGCGATGCTTCTCACCGAAGGTGTTACCAGCACACTGCTCTGCCAGACAGGCAAATGT
 AACTGGGGACCACCATGTTTACGTGACATCAAGAGGAAGCGGAAACCAGTGGCCACAGCATCTTTGTCT
 AGCCCCAGTGCAGTTCACATGGATGCAGTGGAGCCAACACACAGCATACAAGCCCCAAATCACCCA
 GCTCTGAGTGGTTGGTGAAGACCTCTGCAGCAGAGAAAGCCACAGACGCAACTACTGCTACATTTTTTAA
 AATGCCACAAGAAAAGAGCCCTGGATACAGC

ACGCGTACGCGGCCGCTCGAGCAGAACTCATCTCAGAAGAGGATCTGGCAGCAAATGATATCCTGGATT
 ACAAGGATGACGACGATAAGGTTTAA

Protein Sequence:

>RC220760 representing NM_017972
 Red=Cloning site Green=Tags(s)

MDELVHDLASALEQTSEQNKLGELWEEMALSPRQRRQLRKRGRKRSDFTHLAEHTCCYSEASESSLD
 EATKDCREVAPVTNFSDDTMVAKRHPALNAIVKSKQHSWHESDSFTENAPCRPLRRRRKVKRVTVSEVA
 ASLQKQKLVSDWSYERGCGRFSAKQRLSRWKENTPWTSSGHGLCESAENRTFLSKTGRKERMECTDEQ
 KQGSDENMSECTSSVCSSTGLFTNDEGRQGDDEQSDWFYECEVPGFTVFNLLPKWAPDHCSEVERM
 DSGLDKFSSTFLLPSRPAQRGYHTRLNRLPGAAARCLRKRRLVKGKETSINTLGERISHIISDPRQK
 DFWLPSAGKRERNQFNPLSPLYSLDVLADASHRRCSAHC SARQANVHWGPPCSRDIKRKRKPVATASLS
 SPSAVHMDAVEPTTPASQAPKSPSEWLVRTSAAEKATDATTATFFKMPQEKSPGYS

TRTRPLEQKLISEEDLAANDILDYKDDDDKV

Chromatograms:

https://cdn.origene.com/chromatograms/mk8062_e02.zip

Restriction Sites:

Sgfl-MluI

Cloning Scheme:


ACCN: NM_017972

ORF Size: 1431 bp

OTI Disclaimer: The molecular sequence of this clone aligns with the gene accession number as a point of reference only. However, individual transcript sequences of the same gene can differ through naturally occurring variations (e.g. polymorphisms), each with its own valid existence. This clone is substantially in agreement with the reference, but a complete review of all prevailing variants is recommended prior to use. [More info](#)

OTI Annotation: This clone was engineered to express the complete ORF with an expression tag. Expression varies depending on the nature of the gene.

Components: The ORF clone is ion-exchange column purified and shipped in a 2D barcoded Matrix tube containing 10ug of transfection-ready, dried plasmid DNA (reconstitute with 100 ul of water).

Reconstitution Method:

1. Centrifuge at 5,000xg for 5min.
2. Carefully open the tube and add 100ul of sterile water to dissolve the DNA.
3. Close the tube and incubate for 10 minutes at room temperature.
4. Briefly vortex the tube and then do a quick spin (less than 5000xg) to concentrate the liquid at the bottom.
5. Store the suspended plasmid at -20°C. The DNA is stable for at least one year from date of shipping when stored at -20°C.

RefSeq: [NM_017972.3](#), [NP_060442.2](#)

RefSeq Size: 2463 bp

RefSeq ORF: 1434 bp

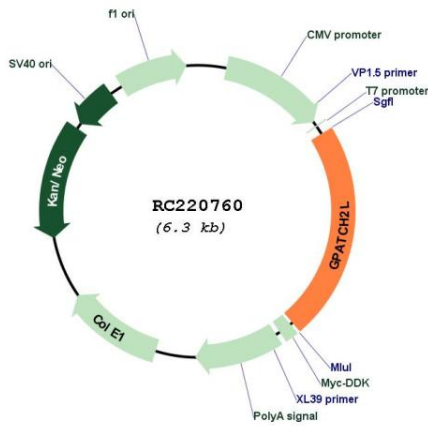
Locus ID: 55668

UniProt ID: [Q9NWQ4](#)

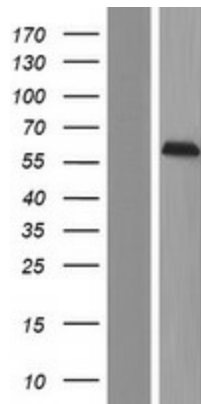
Cytogenetics: 14q24.3

MW: 53.7 kDa

Product images:



Circular map for RC220760



Western blot validation of overexpression lysate (Cat# [LY413406]) using anti-DDK antibody (Cat# [TA50011-100]). Left: Cell lysates from untransfected HEK293T cells; Right: Cell lysates from HEK293T cells transfected with RC220760 using transfection reagent MegaTran 2.0 (Cat# [TT210002]).