

## Product datasheet for **RC220757**

### ZCWPW2 (NM\_001040432) Human Tagged ORF Clone

#### Product data:

|                           |   |
|---------------------------|---|
| Product Type:             | Expression Plasmids   |
| Product Name:             | ZCWPW2 (NM_001040432) Human Tagged ORF Clone                      |
| Tag:                      | Myc-DDK   |
| Symbol:                   | ZCWPW2  |
| Synonyms:                 | ZCW2  |
| Mammalian Cell Selection: | Neomycin  |
| Vector:                   | pCMV6-Entry (PS100001)  |
| E. coli Selection:        | Kanamycin (25 ug/mL)  |
| ORF Nucleotide Sequence:  | >RC220757 ORF sequence<br>Red=Cloning site Blue=ORF Green=Tags(s) |

TTTTGTAATACGACTCACTATAGGGCGGCCGGAATTCGTCGACTGGATCCGGTACCGAGGAGATCTGCC  
GCC**CGATCGCC**

ATGGATAAAGAAAAATTGGATGTTAAGATTGAATATTGTAACATGCAATGGATTCTCAGTGGAAAAACA  
TGTATGTAACAAAGTGTGGTTCAATGTGAGAATGAAAATTGTTGAAATGGAGATTGTTATCAAGTGA  
GGATTCAAGCAAGTTGATCATGATGAACCATGGTACTGCTTCATGAACACTGATTCAAGATATAATAAC  
TGCTCAATTTCTGAAGAAGACTCCCTGAAGACTCTCAGCTTCATCAGTGTGGATTTAAGATTGTCTATT  
CACAGCTCCCTCTTGAAGCCTGGTTTTGGTAAAATTACAGAATTGGCCAAGTTGGCCAGGAATACTTTG  
CCCTGACCGTTTTAAAGGAAATATGTAACCTATGACCCGGATGGAAATGTTGAAGAGTATCACATAGAA  
TTCTGGCGATCCCCATTCAAGATCATGGATAAAGGCAACATTCGTTGGACATTATAGTATCACATTAA  
AGCCAGAAAAGTGAAGAATAAAAAAGAGTGGTATAAAAGTGCCTACAAGAAGCATGTCTACTCTATGG  
ATATTCTCATGAGCAAAGACTGGAAATGTGCTGCCTATCAAACTACAAGATAAATCCGAAACACATGAC  
AAAGTTGCTGCACTGGTCAAGAAAAGGAAGCAGACTTCTAAAAATAATTTGAAAAGAAGAAGCCCAAT  
TTAGAAAAGGAAAAGGAAAGCAATTTTAAAATGCTCTTTGAAAATGTTATTCTGATGATGCCTATC  
AAAGGAGAACAGGGTTGTCTGTGAGACGGAAGTTTTACTAAAAGAGCTGGAGCAAATGCTGCAGCAAGCA  
CTGCAACCCACAGCCACACCTGATGAATCAGAAGAAGGACATGGAGAGGAAATAAATATGGGAGAAAAGT  
TATCTAAATGCAGCCAGAAGCTCCTGCAGGCAGTCTGTTTAAAACCCTATGAAGAGGACTATCTTGT  
AATTGATGGGATAAAATTTAAAGCTGGAGAATGTATTGAGGATATAACTAATAAATTTAAAGAAATAGAT  
GCTTTGATGTCTGAGTTT

**ACGCGT**ACGCGGCCGCTCGAGCAGAAACTCATCTCAGAAGAGGATCTGGCAGCAAATGATATCCTGGATT  
ACAAGGATGACGACGATAAGGTTTAA



[View online »](#)

**Protein Sequence:** >RC220757 protein sequence  
Red=Cloning site Green=Tags(s)

MDKEKLDVKIEYCNAMDSVENMYVNVVWQCENENCLKWRLLSSEDSAKVDHDEPWYCFMNTDSRYNN  
 CSI SEEDFPEESQLHQCGFKIVYSQLPLGSLVLVKLQNWPSWPGILCPDRFKGKYVTYDPDGNVEEYHIE  
 FLGDPHSRSWIKATFVGHYSITLKEPKCKNKKKWKYSALQEACLLYGSHEQRLEMCCSKLQDKSETHD  
 KVAALVKRKRQTSKNNIEKKKPKFRKRKRKAILKCSFENVYSDDALSKENRVVCETEVLLKELEQMLQQA  
 LQPTATPDESEEGHGEIINMGEKLSKCSPEAPAGSLFENHYEEDYLVIDGIKLGAGECIEDITNKFKIED  
 ALMSEF

TRTRPLEQKLISEEDLAANDILDYKDDDDKV

**Chromatograms:** [https://cdn.origene.com/chromatograms/mk6600\\_d05.zip](https://cdn.origene.com/chromatograms/mk6600_d05.zip)

**Restriction Sites:** SgfI-MluI

**Cloning Scheme:**



\* The last codon before the Stop codon of the ORF

**ACCN:** NM\_001040432

**ORF Size:** 1068 bp

**OTI Disclaimer:** The molecular sequence of this clone aligns with the gene accession number as a point of reference only. However, individual transcript sequences of the same gene can differ through naturally occurring variations (e.g. polymorphisms), each with its own valid existence. This clone is substantially in agreement with the reference, but a complete review of all prevailing variants is recommended prior to use. [More info](#)

**OTI Annotation:** This clone was engineered to express the complete ORF with an expression tag. Expression varies depending on the nature of the gene.

**Components:** The ORF clone is ion-exchange column purified and shipped in a 2D barcoded Matrix tube containing 10ug of transfection-ready, dried plasmid DNA (reconstitute with 100 ul of water).

**Reconstitution Method:**

1. Centrifuge at 5,000xg for 5min.
2. Carefully open the tube and add 100ul of sterile water to dissolve the DNA.
3. Close the tube and incubate for 10 minutes at room temperature.
4. Briefly vortex the tube and then do a quick spin (less than 5000xg) to concentrate the liquid at the bottom.
5. Store the suspended plasmid at -20°C. The DNA is stable for at least one year from date of shipping when stored at -20°C.

**RefSeq:** [NM\\_001040432.4](#)

**RefSeq Size:** 1752 bp

**RefSeq ORF:** 1071 bp

**Locus ID:** 152098

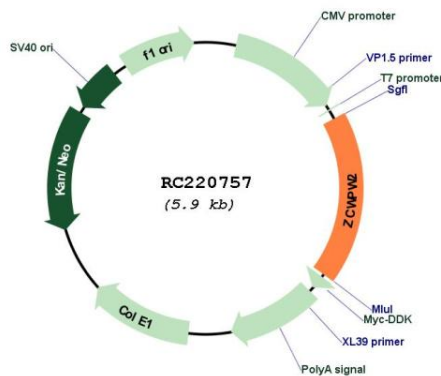
**UniProt ID:** [Q504Y3](#)

**Cytogenetics:** 3p24.1

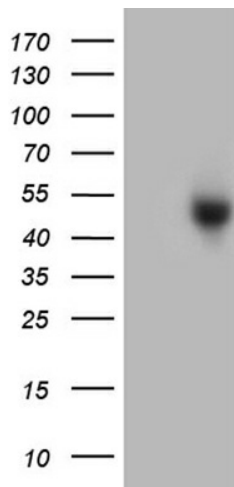
**MW:** 41.4 kDa

**Gene Summary:** Histone methylation reader which binds to non-methylated (H3K4me0), monomethylated (H3K4me1), dimethylated (H3K4me2) and trimethylated (H3K4me3) 'Lys-4' on histone H3 (PubMed:26933034). The order of binding preference is H3K4me3 > H3K4me2 > H3K4me1 > H3K4me0 (PubMed:26933034).[UniProtKB/Swiss-Prot Function]

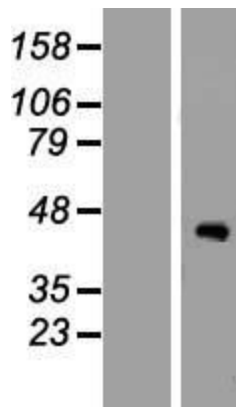
### Product images:



Circular map for RC220757



HEK293T cells were transfected with the pCMV6-ENTRY control (Cat# [PS100001], Left lane) or pCMV6-ENTRY ZCWPW2 (Cat# RC220757, Right lane) cDNA for 48 hrs and lysed. Equivalent amounts of cell lysates (5 ug per lane) were separated by SDS-PAGE and immunoblotted with anti-ZCWPW2 (Cat# [TA809589])(1:2000). Positive lysates [LY421752] (100ug) and [LC421752] (20ug) can be purchased separately from OriGene.



Western blot validation of overexpression lysate (Cat# [LY421752]) using anti-DDK antibody (Cat# [TA50011-100]). Left: Cell lysates from untransfected HEK293T cells; Right: Cell lysates from HEK293T cells transfected with RC220757 using transfection reagent MegaTran 2.0 (Cat# [TT210002]).