

## Product datasheet for **RC220754**

### IL17E (IL25) (NM\_172314) Human Tagged ORF Clone

#### Product data:

**Product Type:** Expression Plasmids  
**Product Name:** IL17E (IL25) (NM\_172314) Human Tagged ORF Clone  
**Tag:** Myc-DDK  
**Symbol:** IL17E  
**Synonyms:** IL17E  
**Mammalian Cell Selection:** Neomycin  
**Vector:** pCMV6-Entry (PS100001)  
**E. coli Selection:** Kanamycin (25 ug/mL)  
**ORF Nucleotide Sequence:** >RC220754 representing NM\_172314  
Red=Cloning site Blue=ORF Green=Tags(s)

TTTTGTAATACGACTCACTATAGGGCGGCCGGAATTCGTCGACTGGATCCGGTACCGAGGAGATCTGCC  
GCC**CGATCGCC**

ATGTACCAGGTGGTTGCATTCTTGGCAATGGTCATGGGAACCCACACCTACAGCCACTGGCCAGCTGCT  
GCCCCAGCAAAGGGCAGGACACCTCTGAGGAGCTGCTGAGGTGGAGCACTGTGCCTGTGCCTCCCCTAGA  
GCCTGCTAGGCCAACCCACCCAGAGTCCTGTAGGGCCAGTGAAGATGGACCCCTCAACAGCAGGGCC  
ATCTCCCCCTGGAGATATGAGTTGGACAGAGACTTGAACCGGCTCCCCAGGACCTGTACCACGCCCGTT  
GCCTGTGCCCGCACTGCGTCAGCCTACAGACAGGCTCCCACATGGACCCCGGGGCAACTCGGAGCTGCT  
CTACCACAACCAGACTGTCTTCTACCGCGGCCATGCCATGGCGAGAAGGGCACCCACAAGGGCTACTGC  
CTGGAGCGCAGGCTGTACCGTGTTCCTTAGCTTGTGTGTGTGCGGCCCGTGTGATGGC

**ACGCGT**ACGCGGCCGCTCGAGCAGAACTCATCTCAGAAGAGGATCTGGCAGCAAATGATATCCTGGATT  
ACAAGGATGACGACGATAAGGTTTAA

**Protein Sequence:** >RC220754 representing NM\_172314  
Red=Cloning site Green=Tags(s)

MYQVVAFLAMVMGTHYSHWPSCCPSKQDTSSELLRWSTVPVPPLEPARPNRHPESCRASEDGPLNSRA  
ISPWRYELDRDLNRLPQDLYHARCLCPHCVSLQTGSHMDPRGNSELLYHNQTVFYRRPCHGKGTGTHKGYC  
LERRLYRVSLACVCRPRVMG

**TR**TRPLEQKLISEEDLAANDILDYKDDDDKV

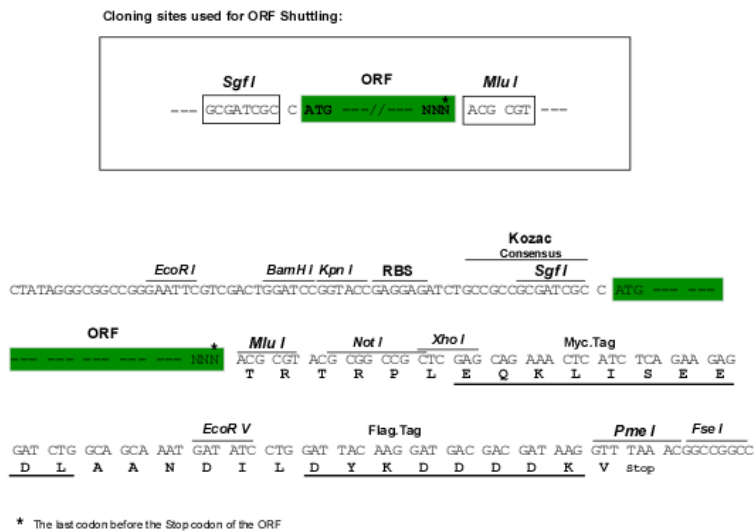
**Chromatograms:** [https://cdn.origene.com/chromatograms/ja1432\\_g10.zip](https://cdn.origene.com/chromatograms/ja1432_g10.zip)



[View online >](#)

Restriction Sites: SgfI-MluI

Cloning Scheme:



ACCN: NM\_172314

ORF Size: 483 bp

OTI Disclaimer: The molecular sequence of this clone aligns with the gene accession number as a point of reference only. However, individual transcript sequences of the same gene can differ through naturally occurring variations (e.g. polymorphisms), each with its own valid existence. This clone is substantially in agreement with the reference, but a complete review of all prevailing variants is recommended prior to use. [More info](#)

OTI Annotation: This clone was engineered to express the complete ORF with an expression tag. Expression varies depending on the nature of the gene.

Components: The ORF clone is ion-exchange column purified and shipped in a 2D barcoded Matrix tube containing 10ug of transfection-ready, dried plasmid DNA (reconstitute with 100 ul of water).

Reconstitution Method:

1. Centrifuge at 5,000xg for 5min.
2. Carefully open the tube and add 100ul of sterile water to dissolve the DNA.
3. Close the tube and incubate for 10 minutes at room temperature.
4. Briefly vortex the tube and then do a quick spin (less than 5000xg) to concentrate the liquid at the bottom.
5. Store the suspended plasmid at -20°C. The DNA is stable for at least one year from date of shipping when stored at -20°C.

RefSeq: [NM\\_172314.1](#), [NP\\_758525.1](#)

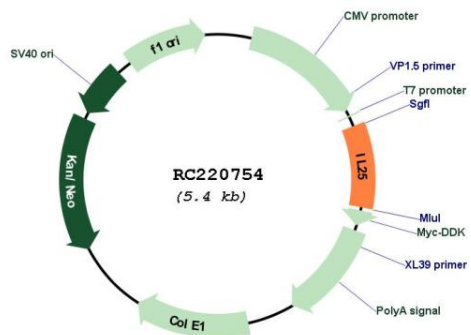
RefSeq Size: 1187 bp

RefSeq ORF: 486 bp

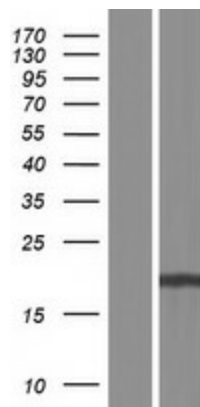
Locus ID: 64806

**UniProt ID:** [Q9H293](#)  
**Cytogenetics:** 14q11.2  
**Protein Families:** Druggable Genome, Secreted Protein, Transmembrane  
**Protein Pathways:** Cytokine-cytokine receptor interaction  
**MW:** 16.7 kDa  
**Gene Summary:** The protein encoded by this gene is a cytokine that shares sequence similarity with interleukin 17. This cytokine can induce NF-kappaB activation, and stimulate the production of interleukin 8. Both this cytokine and interleukin 17B are ligands for the cytokine receptor IL17BR. Studies of a similar gene in mice suggest that this cytokine may be a pro-inflammatory cytokine favoring the Th2-type immune response. Alternative splicing results in multiple transcript variants. [provided by RefSeq, Mar 2010]

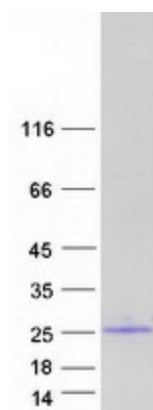
### Product images:



Circular map for RC220754



Western blot validation of overexpression lysate (Cat# [LY406709]) using anti-DDK antibody (Cat# [TA50011-100]). Left: Cell lysates from untransfected HEK293T cells; Right: Cell lysates from HEK293T cells transfected with RC220754 using transfection reagent MegaTran 2.0 (Cat# [TT210002]).



Coomassie blue staining of purified IL25 protein (Cat# [TP320754]). The protein was produced from HEK293T cells transfected with IL25 cDNA clone (Cat# RC220754) using MegaTran 2.0 (Cat# [TT210002]).