

## Product datasheet for **RC220747**

### WVOX (NM\_016373) Human Tagged ORF Clone

#### Product data:

**Product Type:** Expression Plasmids  
**Product Name:** WVOX (NM\_016373) Human Tagged ORF Clone  
**Tag:** Myc-DDK  
**Symbol:** WVOX  
**Synonyms:** D16S432E; DEE28; EIEE28; FOR; FRA16D; HHCMA56; PRO0128; SCAR12; SDR41C1; WOX1  
**Mammalian Cell Selection:** Neomycin  
**Vector:** pCMV6-Entry (PS100001)  
**E. coli Selection:** Kanamycin (25 ug/mL)  
**ORF Nucleotide Sequence:** >RC220747 representing NM\_016373  
 Red=Cloning site Blue=ORF Green=Tags(s)

TTTTGTAATACGACTCACTATAGGGCGGCCGGAATTCGTCGACTGGATCCGGTACCGAGGAGATCTGCC  
 GCC**CGATCGCC**

ATGGCAGCGCTGCGCTACGCGGGGCTGGACGACACGGACAGTGAGGACGAGCTGCCTCCGGGCTGGGAGG  
 AGAGAACCACCAAGGACGGCTGGGTTTACTACGCCAATCACACCGAGGAGAAGACTCAGTGGGAACATCC  
 AAAAATGGAAAAAGAAAACGAGTGGCAGGAGATTTGCCATACGGATGGGAACAAGAACTGATGAGAAC  
 GGACAAGTGTGTGTGACCATATAATAAAAAGAACCCTACTTGGACCAAGACTGGCGTTTACTG  
 TGGATGATAATCCGACCAAGCCAACCACCCGGCAAAGATACGACGGCAGCACCCTGCCATGGAAATTCT  
 CCAGGGCCGGGATTTCACTGGCAAAGTGGTTGTGGTCACTGGAGCTAATTCAGGAATAGGTTCCGAAACC  
 GCCAAGTCTTTGCCCTCCATGGTGCACATGTGATCTTGGCCTGCAGGAACATGGCAAGGGCGAGTGAAG  
 CAGTGTACGCATTTTAGAAGAATGGCATAAAGCCAAGGTAGAAGCAATGACCCTGGACCTCGCTCTGCT  
 CCGTAGCGTGCAGCATTTTGTGAAGCATTCAAGGCCAAGAATGTGCCTCTTCATGTGCTTGTGTGCAAC  
 GCAGCAACTTTTGTCTACCTGGAGTCTACCAAAGATGGCCTGGAGACCACCTTTCAAGTGAATCATC  
 TGGGGCACTTCTACCTTGTCCAGTCTCCAGGATGTTTTGTGCCGCTCAGCTCCTGCCGTTGTCATTGT  
 GGTCTCCTCAGAGTCCCATCGATTTACAGATATTAACGACTCCTTGGGAAAACGGACTTCAGTGCCTC  
 TCTCCAACAAAAACGACTATTGGGCGATGCTGGCTTATAACAGTCCAAGCTTGAACATCCTCTTCT  
 CCAACGAGCTGCACCGTGCCTCTCCCCACGCGGGTCAAGTCAACGAGTGCATCCTGGAAATATGAT  
 GACTCCAACATTCATCGCAGCTGGTGGGTGTACACACTGCTGTTTACCTTGGCGAGGCCTTTCACCAAG  
 TCCATGCAACAGGGAGCTGCCACCACCGTGTACTGTGCTGCTGTCCAGAACTGGAGGGTCTGGGAGGA  
 TGTACTTCAACAAGTGTGCCGCTGCATGCCCTCACCAGAAGCTCAGAGCGAAGAGACGGCCCGACCT  
 GTGGGCGCTCAGCGAGAGGCTGATCCAAGAACGGCTTGGCAGCCAGTCCGGC

**ACGCGT**ACGCGGCCGCTCGAGCAGAACTCATCTCAGAAGAGGATCTGGCAGCAATGATATCCTGGATT  
 ACAAGGATGACGACGATAAGGTTTAA



[View online >](#)



**Reconstitution Method:**

1. Centrifuge at 5,000xg for 5min.
2. Carefully open the tube and add 100ul of sterile water to dissolve the DNA.
3. Close the tube and incubate for 10 minutes at room temperature.
4. Briefly vortex the tube and then do a quick spin (less than 5000xg) to concentrate the liquid at the bottom.
5. Store the suspended plasmid at -20°C. The DNA is stable for at least one year from date of shipping when stored at -20°C.

**Note:** Plasmids are not sterile. For experiments where strict sterility is required, filtration with 0.22um filter is required.

**RefSeq:** [NM\\_016373.4](#)

**RefSeq Size:** 2264 bp

**RefSeq ORF:** 1245 bp

**Locus ID:** 51741

**UniProt ID:** [Q9NZC7](#)

**Cytogenetics:** 16q23.1-q23.2

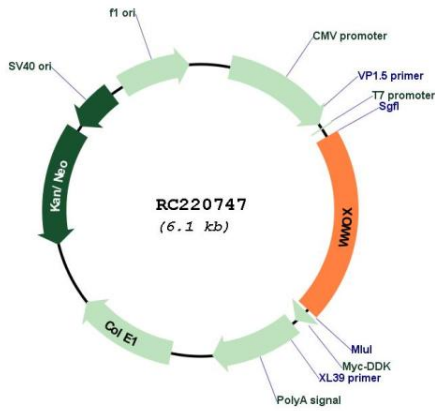
**Domains:** WW, adh\_short

**Protein Families:** Druggable Genome

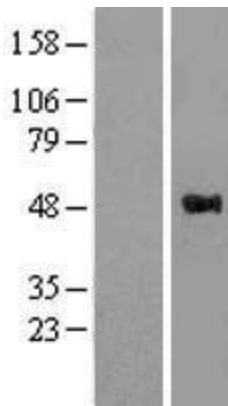
**MW:** 46.5 kDa

**Gene Summary:** This gene encodes a member of the short-chain dehydrogenases/reductases (SDR) protein family. This gene spans the FRA16D common chromosomal fragile site and appears to function as a tumor suppressor gene. Expression of the encoded protein is able to induce apoptosis, while defects in this gene are associated with multiple types of cancer. Disruption of this gene is also associated with autosomal recessive spinocerebellar ataxia 12. Disruption of a similar gene in mouse results in impaired steroidogenesis, additionally suggesting a metabolic function for the protein. Alternative splicing results in multiple transcript variants. [provided by RefSeq, May 2014]

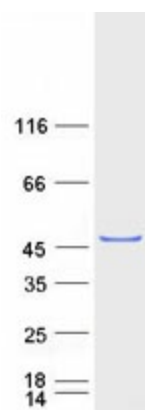
Product images:



Circular map for RC220747



Western blot validation of overexpression lysate (Cat# [LY413978]) using anti-DDK antibody (Cat# [TA50011-100]). Left: Cell lysates from untransfected HEK293T cells; Right: Cell lysates from HEK293T cells transfected with RC220747 using transfection reagent MegaTran 2.0 (Cat# [TT210002]).



Coomassie blue staining of purified WVOX protein (Cat# [TP320747]). The protein was produced from HEK293T cells transfected with WVOX cDNA clone (Cat# RC220747) using MegaTran 2.0 (Cat# [TT210002]).