

## Product datasheet for RC220742

### IBP160 (AQR) (NM\_014691) Human Tagged ORF Clone

#### Product data:

Product Type:	Expression Plasmids
Product Name:	IBP160 (AQR) (NM_014691) Human Tagged ORF Clone
Tag:	Myc-DDK
Symbol:	IBP160
Synonyms:	fSAP164; IBP160
Mammalian Cell Selection:	Neomycin
Vector:	pCMV6-Entry (PS100001)
E. coli Selection:	Kanamycin (25 ug/mL)
ORF Nucleotide Sequence:	>RC220742 ORF sequence Red=Cloning site Blue=ORF Green=Tags(s)

TTTTGTAATACGACTCACTATAGGGCGGCCGGAATTCGTCGACTGGATCCGGTACCGAGGAGATCTGCC  
GCC**CGATCGCC**

ATGGCAGCCCCTGCGCAGCCCAAGAAGATCGTGGCCCCTACGGTGTCCCAATCAATGCGGAGTTCGTGA  
CCCAGTTAGCATGTAATACTGGGCTCCCCACATCAAGAAGAAATCACCTTTTGATATAAAGTTATTGA  
AGATATATATGAAAAAGAGATTGTCAAATCAAGGTTTGTCTATTAGAAAGATAATGCTCTTGAATTTAGC  
CAGTATCTTGAAAATTATCTCTGGATGAATTATTCTCTGAGGTATCTAGCAAGGCCTATTTAATGTCAA  
TCTGCTGTATGGTGAATGAGAAGTTTAGAGAAAACGTGCCTGCATGGGAGATTTTAAAGAAGAAGCCAGA  
CCACTTCCCATTCTTTTTAAACACATCTTGAAGCGGCATTAGCTGAACTGATGGTGAATTTTCACTT  
CATGAACAGACAGTCTTACTACTTTTTCTTGATCATTGCTTCAATAGTTTGAAGTAGACTTGATACGAA  
GTCAAGTACAGCAGCTTATCTCCCTCCCAATGTGGATGGGCTTACAGCTGGCAGCATTGGAATTAGAATT  
AAAAAAGACACCTAAGCTAAGAAAATTCTGGAACCTTGATTAAGAAAGATGATGAAAAGATGGATCCAGAA  
GCAAGAGAACAGGCATATCAAGAGAGGAGATTTCTTTCACAACTCATCCAGAAAGTTTATCTCTGTGCTGA  
AATCAGTCCCACCTTCTGAACCTGTCATATGGACAAAGTTCATTACTGTGAAAGATTATTGAACCTTAT  
GATTGATCTAGAGGCCCTGCTACCCACAAGGCGCTGGTTAATACCATCTGGATGATTTCCACCTTCTG  
GTTCACTGTTACCTTTCCAATCTTGTTCGTAGAGAAGAGGATGGCCATCTTTTTTCCAGCTTTTGGACA  
TGCTTAAATTCTATACTGGTTTTGAAATTAATGACCAAAGTGGAAATGCTCTGACAGAGAATGAGATGAC  
CACAATCACTATGATAGAATTACTTCTCTACAGAGAGCTGCTTTTGCACATTTTCTGAACTCTATGAT  
TTTGCCCTCTCAAATGTGGCAGAAGTAGATACTCGGGAGTCTTGGTCAAGTTTTTGGACCTCTTAGTT  
CAAACACACTCCACCAGGTGGCATCATACCTCTGCTTGTGGCAACTCTTCTAAAAATGAAGACACAAC  
TTTTGATAAAGAATTTCTTCTAGAATTGCTGGTATCTCGTCATGAACGTCGAATTTCTCAGATTACGAG  
TTGAACCAGATGCCTTTGTATCCAAGTGAAGAAATTAATGGGATGAAAATTTGCCAACTGAGTACT  
ATTCTGGAGAAGTTGTCTTCTTCCCAAATGAATTTGCAGTTTTTGACTCTTCATGACTACCTGCT  
AAGGAACCTTAACCTCTCCGCTTGAATCAACTTATGAAATTCGTCAGGACATTGAAGATAGTGCAGC



[View online >](#)

AGAATGAAGCCATGGCAATCTGAATATGGCGGTGTAGTGTGGTGGTGGGCGGAATGGCCAGCCCA  
TTGTGGCTTTCACTGTCGTTGAAGTGGCCAAACCAACATAGGTGAAAACCTGGCCAAACCCGAGTTCGTGC  
AGATGTTACCATAAATCTCAATGTCAGAGATCACATCAAAGATGAATGGGAAGGTCTTCGTAAGCATGAT  
GTATGCTTTTTAATTACCGTACGTCACAAAACCTTATGGCACTAAGTTTGACCGGAGGAGACCTTTTA  
TTGAGCAGGTTGGCCTGGTTTATGTCAGAGGCTGTGAAATTCAGGGCATGCTGGATGATAAAGGACGTGT  
CATTGAAGATGGACCTGAACCCAGACCCAATCTTAGAGGAGAATCAAGGACATTTAGAGTGTTTTTGGAT  
CCAAACCAAGTATCAACAAGATATGACCAATACTATACAAAATGGAGCAGAGGATGTGATGAAAACCTTTA  
ATATAAATGAGGAGAAAACCAAGGAAAATAACTTTAAGGCTGTGCTGGAGACTATTCGGAACCTGAT  
GAATACTGATTGTGGTACCTGACTGGCTGCACGATATCATTATAGTTATGGGACCCAAAGTAGTGCA  
CATTATTCGAAAATGCCCAATCAGATTGCCACCCTTGATTTCAATGATACATTTCTCCTTGGAGCATT  
TAAAAGCCAGCTTCCCTGGTCATAATGTTAAAGTAACTGTAGAAGACCCTGCTCTACAAATACCCCTTT  
CAGGATAACTTTCCAGTAAGAAGTGGAAAAGGAAAGAAAGATGCGGATGTGGAAGATGAAGAC  
ACCGAGGAAGCAAAAACCTTAATTGTTGAGCCCATGTTATTCCTAATAGGGTCCTTATCCTTATAATC  
AACCCAAACGTAATACGATTCAGTTCACATACACAGATAGAAGCCATCCGTGCTGGAATGCAGCCTGG  
GCTGACTATGGTGTGGGCCACCTGGTACAGGCAAAACAGATGTGGCAGTTCAGATCATATCCAACATC  
TACCACAACCTCCAGAACAGAGGACTCTAATTGTTACTCATTCCAATCAGGCCCTAAACAGTGTGTTG  
AGAAAATCATGGCATTAGACATTGATGAGCGCCACCTACTGCGTCTTGGTTCATGGAGAAGAGAGCTGGA  
GACAGAGAAAAGATTTGAGCAGGTATGGAAGAGTTAATTATGTTCTGGCTCGAAGAATAGAATTTTAGAA  
GAAGTCAAACGATTGCAAAGAGTCTAGGGGTTCCAGGAGATGCCTCATATACCTGTGAAACTGCAGGCT  
ATTTCTTCTTATACCAGGTAATGTCTCGCTGGGAAGAGTATATCAGCAAAGTAAAAATAAAGGTAGTAC  
ATTGCCAGATGTTACGGAAGTCTCCACTTTCTCCCTTCCATGAATACTTTGCAAATGCTCCTCAACCC  
ATTTTTAAAGGAAGATCTTATGAAGAAGACATGGAATTTGCTGAAGGATGTTTCAGGCATATTAAGAAAA  
TCTTTACGCAGCTTGAGGAATTCAGACCTCTGAATTTGCTTCAAGTGGACTGGACAGATCTAAATACCT  
TTTAGTAAAGAAGCAAAATTATTGCTATGACCTGTACTCATGCTGCCTTAAAACGACATGACTTGGTC  
AAGCTAGGTTTCAAGTATGACAACATTTTATGGAAGAGGCTGCTCAGATTCTGGAGATAGAAAATTTTA  
TCCCTCTTCTTACAGAATCCTCAGGATGGATTTAGCCGACTAAAACGATGGATTATGATTGGCGATCA  
TCACCAGTTACCTCCAGTTATTAAGAACATGGCCTTTCAAAGTACTCAAACATGGAGCAGTCTCTCTTC  
ACTCGCTTTGTTGCGGTTGGAGTCCGACTGTTGACCTTGATGCTCAAGGGAGAGCCAGAGCAAGCTTGT  
GCAACCTCTACAACCTGGCGATACAAGAATCTAGGAACTTACCCCATGTGCAGCTCTGCCAGAGTTAG  
TACAGCAAATGCTGGCTTACTGTATGACTTCCAGCTCATTAAATGTTGAAGATTTCAAGGAGTGGGAGAA  
TCTGAACCTAATCCTTACTTCTATCAGAATCTTGAGAGGCAGAAATATGTAGTAGCACTTTTATGTACA  
TGTGTTTACTTGGTTACCTGCTGACAAAATCAGTATTCTAACAACATATAATGGCCAAAAGCATCTTAT  
TCGCGACATCATCAATAGACGATGTGGAACAATCCATTGATTGGAAGACCAAACAAGGTGACAACCTGTT  
GATAGATTTCAAGGTCAACAGAATGACTATATTCTTTCTCTGGTACGAACCCAGGGCAGTGGGCCATC  
TGAGGGATGTCCGTGCTTGGTGTAGTGGCCATGTCTAGAGCCAGACTTGGACTTTATCTTCGCCAGAGT  
ATCCCTCTTCAAACCTGTTTTGAACTGACTCCAGCTTTCAGTCAGCTCACAGCTCGCCCCCTTCAATTTG  
CATATAATTCCAACAGAACCTTTCCCACTACTAGAAAAGTGGAGAGAGACCATCTCATGAAGTACAAA  
TAATAAAAAATATGCCCCAGATGGCAAACCTTTGTATACAACATGTACATGCATTTGATACAGACTACACA  
TCATTATCATCAGACTTTATTACAACCTACCACCTGCTATGGTGAAGAGGGTGAGGAAGTTCAAAAATCAA  
GAAACAGAATTGGAACAGAAAGAGGCCATGACTGTTCAAGCTGACATCATACCCAGTCCAACAGACA  
CCAGCTGCCGTCAAGAACTCCAGCCTTTCAAACCTGACACCACCCCAAGTGAAGACAGGAGCCACTTCCAC  
TCCAGAAGCCATCCCTGCTTTATCTGAGACCACCCCTACTGTGGTAGGAGCTGTATCTGCACCGGCAGAA  
GCTAACACACCTCAGGATGCCACATCTGCCCCAGAAGAGACCAAG

ACGCGTACGCGGCCGCTCGAGCAGAACTCATCTCAGAAGAGGATCTGGCAGCAATGATATCCTGGATT  
ACAAGGATGACGACGATAAGGTTTAA

**Protein Sequence:**

>RC220742 protein sequence  
 Red=Cloning site Green=Tags(s)

MAAPAQPKKIVAPTVSQINAEFVTQLACKYWAPHIKKSPFDIKVIEDIYEKEIVKSRFAIRKIMLLEFS  
 QYLENYLWMNYSPEVSSKAYLMSICCMVNEKFRENVPAWEIFKKKPDHFPFFFKHILKAALAETDGEFSL  
 HEQTVLLLLFLDHCFNLSLEVDLIRSQVQQLISLPMWMLQLARLELELKKTPKLRKFWNLIKKNDKMDPE  
 AREQAYQERRFLSQLIQKFISVLKSVPLSEPVMTDKVHYCERFIELMIDLEALLPTRRFNTILDDSHLL  
 VHCYLSNLRREEDGHLFSQLLDMLKFYTGFEINDQTGNALTENEMTTIHVDRTSLQRAAFHFPELYD  
 FALSNAEVDTRRESLVKFFGPLSSNTLHQVASYLCLLPTLPKNEDTTFDKEFLELLVSRHERRISQIQQ  
 LNQMPLYPTEKIIWDENIVPTEYSGEGCLALPKLNLQFLTLHDYLLRNFNLFRELESTYERQDIEDSVS  
 RMKPWQSEYGGVVFGGWARMAQPIVAFTVVEVAKPNIGENWPTRVRADVTINLNVRDHKDEWEGLRKHD  
 VCFLLITVRPTKPYGTFKDRRRPFIEQVGLVYVVGCEIQGMLDDKGRVIEDGPEPRPNLREGSRTFRVFLD  
 PNQYQQDMTNTIQNGAEDVYETFNIMRRKPKENNFKAVLETIRNLMNTDCVVPDWLHDIILGYGDPSSA  
 HYSKMPNQIATLDFNDTFLSIEHLKASFPGHNVKVTVEDPALQIPPFRTITFPVRSKGGKRRKDADVEDD  
 TEEAKTLIVEPHVIPNRGPYPYNQPKRNTIQFHTHTQIEAIRAGMQPGLTMVVGPPGTGKTDVAVQIISNI  
 YHNFPEQRTLIVTHSNQALNQLFEKIMALDIDERHLLRLHGEEEELETEKDFSRVGRVNYVLARRIELLE  
 EVKRLQKSLGVPGDASYTCETAGYFFLYQVMSRWEYISKVKNKGSTLPDVTEVSTFFPFHEYFANAPQP  
 IFKGRSYEEDMEIAEGCFRHIKKIFTQLEEFRASELLRSGLDRSKYLLVKEAKIIAMTCTHAALKRHDLV  
 KLGFKYDNLMEEEAQILEIETFIPLLLQNPQDGF SRLKRWIMIGDHHQLPPVIKNMAFKQYSNMEQSLF  
 TRFVRVGVPTVDLDAQGRARASL CNL YNWRYKNLGNLPHVQLLPEFSTANAGLLYDFQLINVEDFQGVGE  
 SEPNNFYQNLGEAEYVVALFMYMCLLGYPADKISILTTYNGQKHLIRDIINRRCGNNPLIGRPNKVTTV  
 DRFQGGQNDYIILLSLVRTRAVGHLRDVRRLLVAMSRRARGLYIFARVSLFQNCFELTPAFSQLTARPLHL  
 HIIPTEPFPTTRKNGERPSHEVQI IKNMPQMANFVYNYMHLIQTTHHYHQTLLQLPPAMVEEGEEVQNQ  
 ETELETEEAMTVQADIIPSPDTSCRQETPAFQTDTPSETGATSTPEAIPALSETTPTVVGAVSAPAE  
 ANTPQDATSAPEETK

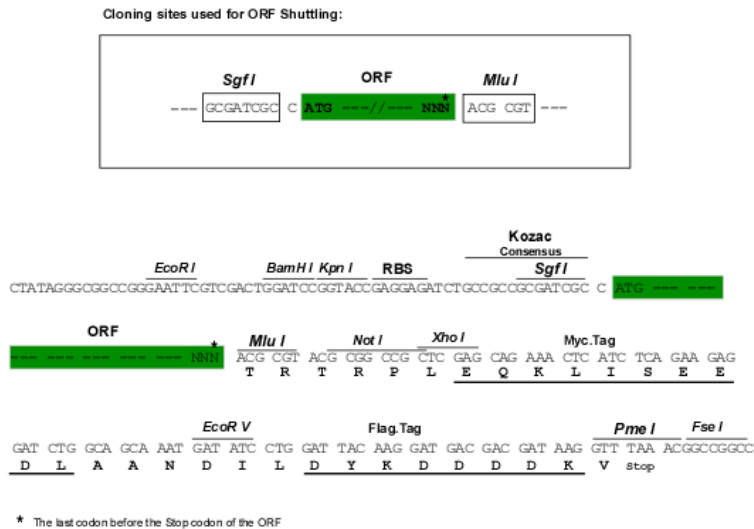
TRTRPLEQKLISEEDLAANDILDYKDDDDKV

**Chromatograms:**

[https://cdn.origene.com/chromatograms/mk6716\\_g04.zip](https://cdn.origene.com/chromatograms/mk6716_g04.zip)

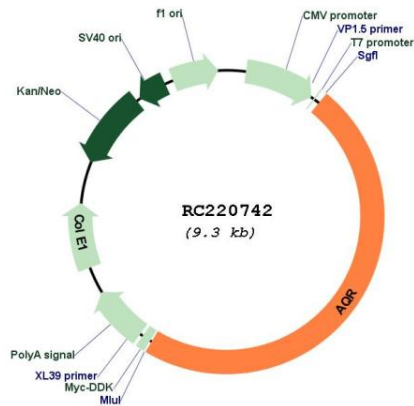
**Restriction Sites:**

SgfI-MluI

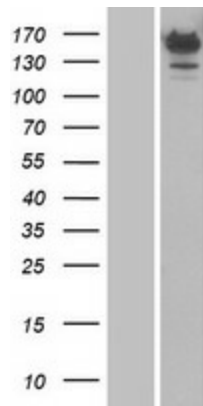
**Cloning Scheme:**

**ACCN:**

NM\_014691

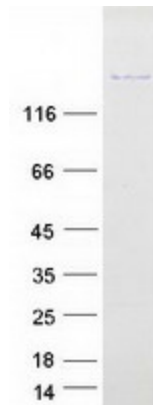
<b>ORF Size:</b>	4455 bp
<b>OTI Disclaimer:</b>	The molecular sequence of this clone aligns with the gene accession number as a point of reference only. However, individual transcript sequences of the same gene can differ through naturally occurring variations (e.g. polymorphisms), each with its own valid existence. This clone is substantially in agreement with the reference, but a complete review of all prevailing variants is recommended prior to use. <a href="#">More info</a>
<b>OTI Annotation:</b>	This clone was engineered to express the complete ORF with an expression tag. Expression varies depending on the nature of the gene.
<b>Components:</b>	The ORF clone is ion-exchange column purified and shipped in a 2D barcoded Matrix tube containing 10ug of transfection-ready, dried plasmid DNA (reconstitute with 100 ul of water).
<b>Reconstitution Method:</b>	<ol style="list-style-type: none"><li>1. Centrifuge at 5,000xg for 5min.</li><li>2. Carefully open the tube and add 100ul of sterile water to dissolve the DNA.</li><li>3. Close the tube and incubate for 10 minutes at room temperature.</li><li>4. Briefly vortex the tube and then do a quick spin (less than 5000xg) to concentrate the liquid at the bottom.</li><li>5. Store the suspended plasmid at -20°C. The DNA is stable for at least one year from date of shipping when stored at -20°C.</li></ol>
<b>RefSeq:</b>	<a href="#">NM_014691.2</a> , <a href="#">NP_055506.1</a>
<b>RefSeq Size:</b>	5106 bp
<b>RefSeq ORF:</b>	4458 bp
<b>Locus ID:</b>	9716
<b>UniProt ID:</b>	<a href="#">O60306</a>
<b>Cytogenetics:</b>	15q14
<b>Protein Pathways:</b>	Spliceosome
<b>MW:</b>	171.3 kDa
<b>Gene Summary:</b>	Involved in pre-mRNA splicing as component of the spliceosome (PubMed:11991638, PubMed:25599396, PubMed:28502770, PubMed:28076346). Intron-binding spliceosomal protein required to link pre-mRNA splicing and snoRNP (small nucleolar ribonucleoprotein) biogenesis (PubMed:16949364). Plays a key role in position-dependent assembly of intron-encoded box C/D small snoRNP, splicing being required for snoRNP assembly (PubMed:16949364). May act by helping the folding of the snoRNA sequence. Binds to intron of pre-mRNAs in a sequence-independent manner, contacting the region between snoRNA and the branchpoint of introns (40 nucleotides upstream of the branchpoint) during the late stages of splicing (PubMed:16949364). Has ATP-dependent RNA helicase activity and can unwind double-stranded RNA molecules with a 3' overhang (in vitro) (PubMed:25599396). [UniProtKB/Swiss-Prot Function]

**Product images:**


Circular map for RC220742



Western blot validation of overexpression lysate (Cat# [LY415108]) using anti-DDK antibody (Cat# [TA50011-100]). Left: Cell lysates from untransfected HEK293T cells; Right: Cell lysates from HEK293T cells transfected with RC220742 using transfection reagent MegaTran 2.0 (Cat# [TT210002]).



Coomassie blue staining of purified AQR protein (Cat# [TP320742]). The protein was produced from HEK293T cells transfected with AQR cDNA clone (Cat# RC220742) using MegaTran 2.0 (Cat# [TT210002]).