

Product datasheet for RC220736

NPSR1 (NM_207172) Human Tagged ORF Clone

Product data:

Product Type:	Expression Plasmids
Product Name:	NPSR1 (NM_207172) Human Tagged ORF Clone
Tag:	Myc-DDK
Symbol:	NPSR1
Synonyms:	ASRT2; GPR154; GPRA; NPSR; PGR14; VRR1
Mammalian Cell Selection:	Neomycin
Vector:	pCMV6-Entry (PS100001)
E. coli Selection:	Kanamycin (25 ug/mL)
ORF Nucleotide Sequence:	>RC220736 representing NM_207172 Red=Cloning site Blue=ORF Green=Tags(s)

TTTTGTAATACGACTCACTATAGGGCGCCGGGAATTCGTCGACTGGATCCGGTACCGAGGAGATCTGCC
GCC**CGATCGCC**

ATGCCAGCCAAC TTCACAGAGGGCAGCTTCGATTCCAGTGGGACCGGGCAGACGCTGGATTCTTCCCAG
TGGCTTGCACTGAAACAGTGACTTTTACTGAAGTGGTGGAAAGGAATGGGGTTCTTCTACTACTC
CTTTAAGACTGAGCAATTGATACTCTGTGGTCTCTTTGTTTTTACCATTGTTGGAACTCCGTTGTG
CTTTTTCCACATGGAGGAGAAAGAAGAAGTCAAGAATGACCTTCTTTGTGACTCAGCTGGCCATCACAG
ATTCTTTCACAGGACTGGTCAACATCTTGACAGATATAATTGGCGATTCAGTGGAGACTTCACGGCACC
TGACCTGGTTTGCCGAGTGGTCCGCTATTTGCAGGTTGTGCTGCTACGCCTCTACCTACGTCCTGGTG
TCCTCAGCATAGACAGATACCATGCCATCGTCTACCCCATGAAGTTCCTTCAAGGAGAAAAGCAAGCCA
GGGTCCTCATTGTGATCGCCTGGAGCCTGTCTTTTCTGTTCTCCATTCCCACCCTGATCATATTTGGGAA
GAGGACACTGTCCAACGGTGAAGTGCAGTGTGGGCCCTGTGGCCTGACGACTCCTACTGGACCCATAC
ATGACCATCGTGGCCTTCTGTTGACTTCCCTCTGACAATCATCAGCATCATGTATGGCATTGTGA
TCCGAATATTTGGATTAAGCAAAACCTACGAAACAGTGATTTCCTCAACTGCTCAGATGGGAACTGTG
CAGCAGCTATAACCGAGGACTCATCTCAAAGGCAAAAATCAAGGCTATCAAGTATAGCATCATCATCATT
CTTGCCCTCATCTGCTGTTGGAGTCCATACTTCTGTTTGACATTTTGGACAATTTCAACCTCCTCCAG
ACACCCAGGAGCGTTTCTATGCCTCTGTGATCATTGAGAACCTGCCAGCATTGAATAGTGCCATCAACCC
CCTCATCTACTGTCTTCAGCAGCTCCATCTCTTTCCCTGCAGGGAGCAAAGATCACAGGATCCAGA
ATGACGTTCCGGGAGAGAACTGAGAGGCATGAGATGCAGATTCTGTCCAAGCCAGAATTCATC

ACGCGTACGCGGCCGCTCGAGCAGAAACTCATCTCAGAAGAGGATCTGGCAGCAAATGATATCCTGGATT
ACAAGGATGACGACGATAAGGTTTAA



[View online »](#)

Protein Sequence: >RC220736 representing NM_207172
 Red=Cloning site Green=Tags(s)

MPANFTEGSGFDSSGTGQTLDSSPVACTETVTFTEVVEGKEWGSFYYSFKTEQLITLWLVFVFTIVGNSV
 LFSTWRRKKKSRMTFFVTQLAITDSFTGLVNILTDINWRF TGDF TAPDLVCRVVRYLQVVLLYASTYVLV
 SLSIDRYHAIVYPMKFLQGEKQARVLIVIAWSLSFLFSIPTLIIFGKRTL SNGEVQCWALWPDDSYWTPY
 MTIVAFLVYFIPLTIISIMYGIVIRTIWIKSKTYETVISNCS DGKLCSSYNRGLISKAKIKAIKYSIIII
 LAFICCWSPYFLFDILDNFNLLPDTQERFYASV IIQNL PALNSAINPLIYCVFSSSISFP CREQRSQDSR
 MTFRERTERHEMQILSKPEFI

TRTRPLEQKLISEEDLAANDILDYKDDDDKV

Chromatograms: https://cdn.origene.com/chromatograms/mk6103_b05.zip

Restriction Sites: SgfI-MluI

Cloning Scheme:



ACCN: NM_207172

ORF Size: 1113 bp

OTI Disclaimer: The molecular sequence of this clone aligns with the gene accession number as a point of reference only. However, individual transcript sequences of the same gene can differ through naturally occurring variations (e.g. polymorphisms), each with its own valid existence. This clone is substantially in agreement with the reference, but a complete review of all prevailing variants is recommended prior to use. [More info](#)

OTI Annotation: This clone was engineered to express the complete ORF with an expression tag. Expression varies depending on the nature of the gene.

Components: The ORF clone is ion-exchange column purified and shipped in a 2D barcoded Matrix tube containing 10ug of transfection-ready, dried plasmid DNA (reconstitute with 100 ul of water).

Reconstitution Method:

1. Centrifuge at 5,000xg for 5min.
2. Carefully open the tube and add 100ul of sterile water to dissolve the DNA.
3. Close the tube and incubate for 10 minutes at room temperature.
4. Briefly vortex the tube and then do a quick spin (less than 5000xg) to concentrate the liquid at the bottom.
5. Store the suspended plasmid at -20°C. The DNA is stable for at least one year from date of shipping when stored at -20°C.

RefSeq: [NM_207172.2](#)

RefSeq Size: 1567 bp

RefSeq ORF: 1116 bp

Locus ID: 387129

UniProt ID: [Q6W5P4](#)

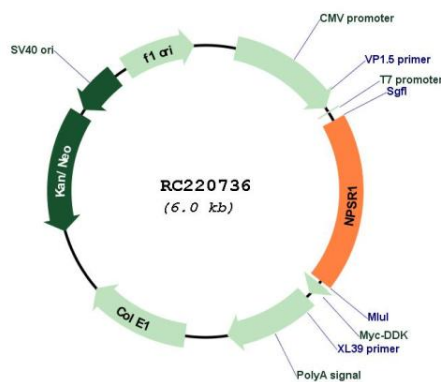
Cytogenetics: 7p14.3

Protein Families: Druggable Genome, Transmembrane

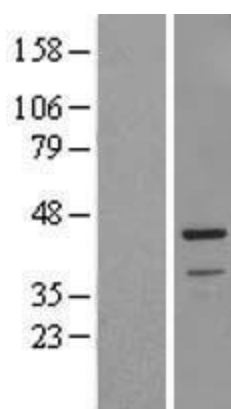
MW: 42.5 kDa

Gene Summary: This gene encodes a member of the vasopressin/oxytocin subfamily of G protein-coupled receptors. The encoded membrane protein acts as a receptor for neuropeptide S and affects a variety of cellular processes through its signaling. Increased expression of this gene in ciliated cells of the respiratory epithelium and in bronchial smooth muscle cells is associated with asthma. Polymorphisms in this gene have also been associated with asthma susceptibility, panic disorders, inflammatory bowel disease, and rheumatoid arthritis. Alternative splicing results in multiple transcript variants. [provided by RefSeq, Jul 2014]

Product images:



Circular map for RC220736



Western blot validation of overexpression lysate (Cat# [LY404063]) using anti-DDK antibody (Cat# [TA50011-100]). Left: Cell lysates from untransfected HEK293T cells; Right: Cell lysates from HEK293T cells transfected with RC220736 using transfection reagent MegaTran 2.0 (Cat# [TT210002]).