

Product datasheet for **RC220735**

SOX30 (NM_007017) Human Tagged ORF Clone

Product data:

Product Type:	Expression Plasmids
Tag:	Myc-DDK
Symbol:	SOX30
Mammalian Cell Selection:	Neomycin
Vector:	pCMV6-Entry (PS100001)
E. coli Selection:	Kanamycin (25 ug/mL)



[View online »](#)

ORF Nucleotide Sequence: >RC220735 representing NM_007017
Red=Cloning site Blue=ORF Green=Tags(s)

TTTTGTAATACGACTACTATAGGGCGCCGGGAATTCGTGACTGGATCCGGTACCGAGGAGATCTGCC
GCCCGGATCGCC

ATGGAGAGAGCCAGACCCGAGCCGCCCTCAGCCGCGCCCGTTGCGTCCCGCTCCGCCCCGCTGCCGG
TCGAGGGCACCTCCTTTTGGGCAGCAGCCATGGAGCCCCCTCCGTGCTCTCCACACTGAGCGCGGCAGC
CAGTGCACCTTGGCCTCGTCTGCGGGGAGGCAGTGGCGTCCGGCTTACAGCCCGCGGTGCGGGCGCTG
CTGCAGGTGAAGCCAGAGCAGGTGTTGCTGCTACCACAGCCTCAGGCCAGAACGAGGAAGCCGCTGCCT
CGTCCGCGCAGGCGCGCTGTTGCAGTTACGGCCGACCTGCGGCTCCTGCAGCCCGCAGCAGGTGAGCAG
CGGCGCCACCTCCAGGCCGAGTTGCACCCGGTGCAGCCCTGGCGCTGCATGTCAAGGCCAAGAAGCAG
AAGCTGGGGCCAGCCTGGATCAGTCAAGTGGGCTCGAGGGCCGTCGAAACCGGTCTAGAGCCTCCA
GGGTGGTCAAGTTGGAAGGCCCGGGCCGCTCGGCTACTTCCGAGGGGACGAGAAGGGCAAGCTGGA
GGCGGAGGAGTATGAGAGACTCGATGCAAGGCGGGCAGGCAAAAGCCCGCAGCCATCCGAGAAGT
GTGATCAAAACGGAGGAACCCGAGAGACTCCTCGAGGACTGCAAGCTCGGCGCGGAGCCCGCTCAATG
GCCTGGTTCATGGCAGCGGGAGTTCATCTTGGCCCCAACGTCGGGTGCCTTTGGGCGCCAGCAGCAAGA
CCTTAGGATCCCTTTGACGCTCCACACGGTCCCCCTGGGGCCGGATCCAGTTTCAGGGAGCTCCGCT
TCAGAGCTGATAAGATTGACCAAGTCCCCCTGACACCAAGTGCCTACTAAAATGCAGTCCCTACTGGAGC
CTTCTGTAAAAATTGAAACCAAGATGTCGGCTCACCGTGTGGCCTCAGATGCAGGCATACCAGATAC
TCCCTTCAGTAAGGACAGAAATGGTCATGTGAAGCGACCCATGAACGCATTTATGGTTTGGCAAGGATC
CACCGACCAGCACTAGCCAAAGCTAACCCAGCAGCCAAACAATGCAGAAATCAGTGTCCAGCTTGGGTTAG
AGTGAACAACTTAGTGAAGAACAAAGAAACCCTATTACGATGAAGCAGCAAAAGATTAAGGAAAAGCA
CAGAGAGGAATTTCTGGTTGGGTTTATCAGCCTCGTCCAGGGAAGCGAAAACGATTCCTTAAGTGT
TCCAATGTATTTCTGGTACCACAGAAATATCATCTCTACAAATCCTACAACAGTTTATCCTTACCGCT
CACCTACGTACTCTGTGGTAATTCACGCTACAGAAATCCCATCACTCATCCAGTTGTACATGCCCTTAC
AGTCGGCCTCCCTTTGGCTATGAAATTTCCGAGTTCAATGCCAGAAATGCCTTAGTTATTATGAAGACA
GGTACCCAAAACATGAGGGTATCTTTCAACTT

ACGCGTACGCGGCCGCTCGAGCAGAAACTCATCTCAGAAGAGGATCTGGCAGCAATGATATCCTGGATT
ACAAGGATGACGACGATAAGGTTTAA

Protein Sequence: >RC220735 representing NM_007017
Red=Cloning site Green=Tags(s)

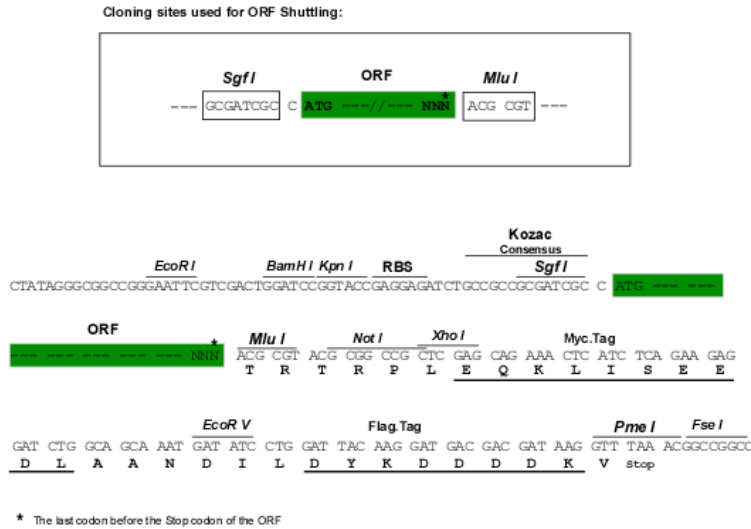
MERARPEPPPQPRPLRPAPPPLPVEGTSFWAAAMEPPSSPTLSAAASATLASSCGEAVASGLQPAVRRRL
LQVKPEQVLLLQPQAQNEEAAASSAQARLLQFRPDLRLQPPTASDGATSRPELHPVQPLALHVKAKKQ
KLGPSLDQSVGPRGAVETGPRASRVVKLEGGPALGYFRGDEKGLAEAEVMRDSMQGGAGKSPAAREG
VIKTEEPERLLEDCLGAEPASNGLVHGSAEVILAPTSAGAFPHQQDLRIPLTLHTVPPGARIQFQGAPP
SELIRLTKVPLTPVPTKMQSLLLEPSVKIETKDVPLTVLPSDAGIPDTPFSKDRNGHVKRPMMNAFMVWARI
HRPALAKANPAANNAEISVQLGLEWNKLESEEKPYDEAQKIKEKHREEFPGWVYQPRPGKRKRFLSV
SNVFSGTTQNIISTNPTTYPYRSPTYSVVIPSLQNPITHPVVHALTVGLPLAMEIFRVQCQNALVIMKT
GTQNMRVSFQL

TRTRPLEQKLI SEEDLAANDILDYKDDDDKV

Chromatograms: https://cdn.origene.com/chromatograms/mk8063_g02.zip

Restriction Sites: SgfI-MluI

Cloning Scheme:



ACCN: NM_007017

ORF Size: 1503 bp

OTI Disclaimer: The molecular sequence of this clone aligns with the gene accession number as a point of reference only. However, individual transcript sequences of the same gene can differ through naturally occurring variations (e.g. polymorphisms), each with its own valid existence. This clone is substantially in agreement with the reference, but a complete review of all prevailing variants is recommended prior to use. [More info](#)

OTI Annotation: This clone was engineered to express the complete ORF with an expression tag. Expression varies depending on the nature of the gene.

Components: The ORF clone is ion-exchange column purified and shipped in a 2D barcoded Matrix tube containing 10ug of transfection-ready, dried plasmid DNA (reconstitute with 100 ul of water).

Reconstitution Method:

1. Centrifuge at 5,000xg for 5min.
2. Carefully open the tube and add 100ul of sterile water to dissolve the DNA.
3. Close the tube and incubate for 10 minutes at room temperature.
4. Briefly vortex the tube and then do a quick spin (less than 5000xg) to concentrate the liquid at the bottom.
5. Store the suspended plasmid at -20°C. The DNA is stable for at least one year from date of shipping when stored at -20°C.

Note: Plasmids are not sterile. For experiments where strict sterility is required, filtration with 0.22um filter is required.

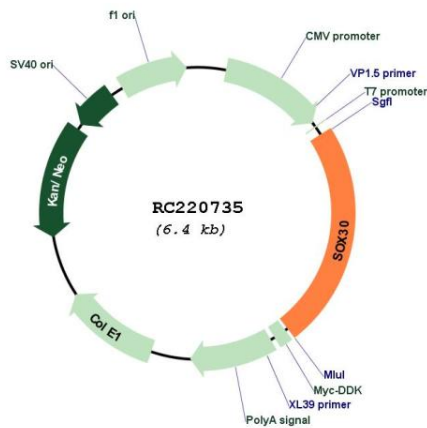
RefSeq: [NM_007017.2](#), [NP_008948.1](#)

RefSeq Size: 2787 bp

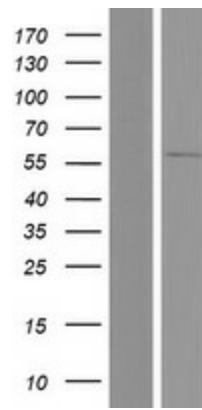
RefSeq ORF:	1506 bp
Locus ID:	11063
UniProt ID:	O94993
Cytogenetics:	5q33.3
MW:	54.1 kDa

Gene Summary: This gene encodes a member of the SOX (SRY-related HMG-box) family of transcription factors involved in the regulation of embryonic development and in the determination of the cell fate. The encoded protein acts as a transcriptional regulator when present in a complex with other proteins. It can activate p53 transcription to promote tumor cell apoptosis in lung cancer. The protein may be involved in the differentiation of developing male germ cells. Alternative splicing of this gene results in multiple transcript variants. A related pseudogene has been identified on chromosome 5. [provided by RefSeq, Apr 2015]

Product images:



Circular map for RC220735



Western blot validation of overexpression lysate (Cat# [LY416254]) using anti-DDK antibody (Cat# [TA50011-100]). Left: Cell lysates from un-transfected HEK293T cells; Right: Cell lysates from HEK293T cells transfected with RC220735 using transfection reagent MegaTran 2.0 (Cat# [TT210002]).