

Product datasheet for **RC220731L3V**

E Cadherin (CDH1) (NM_004360) Human Tagged ORF Clone Lentiviral Particle

Product data:

Product Type:	Lentiviral Particles
Product Name:	E Cadherin (CDH1) (NM_004360) Human Tagged ORF Clone Lentiviral Particle
Symbol:	E Cadherin
Synonyms:	Arc-1; BCDS1; CD324; CDHE; ECAD; LCAM; UVO
Mammalian Cell Selection:	Puromycin
Vector:	pLenti-C-Myc-DDK-P2A-Puro (PS100092)
Tag:	Myc-DDK
ACCN:	NM_004360
ORF Size:	2646 bp
ORF Nucleotide Sequence:	The ORF insert of this clone is exactly the same as(RC220731).
OTI Disclaimer:	The molecular sequence of this clone aligns with the gene accession number as a point of reference only. However, individual transcript sequences of the same gene can differ through naturally occurring variations (e.g. polymorphisms), each with its own valid existence. This clone is substantially in agreement with the reference, but a complete review of all prevailing variants is recommended prior to use. More info
OTI Annotation:	This clone was engineered to express the complete ORF with an expression tag. Expression varies depending on the nature of the gene.
RefSeq:	NM_004360.3
RefSeq Size:	4828 bp
RefSeq ORF:	2649 bp
Locus ID:	999
UniProt ID:	P12830
Cytogenetics:	16q22.1
Domains:	Cadherin_C_term, CA
Protein Families:	Druggable Genome, ES Cell Differentiation/IPS, Transmembrane



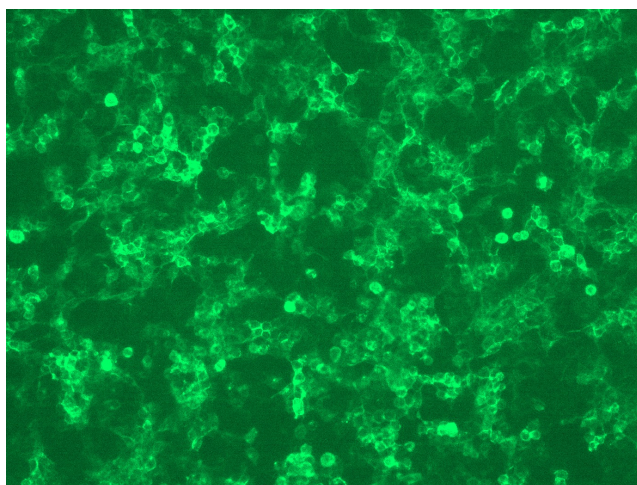
[View online »](#)

Protein Pathways: Adherens junction, Bladder cancer, Cell adhesion molecules (CAMs), Endometrial cancer, Melanoma, Pathogenic Escherichia coli infection, Pathways in cancer, Thyroid cancer

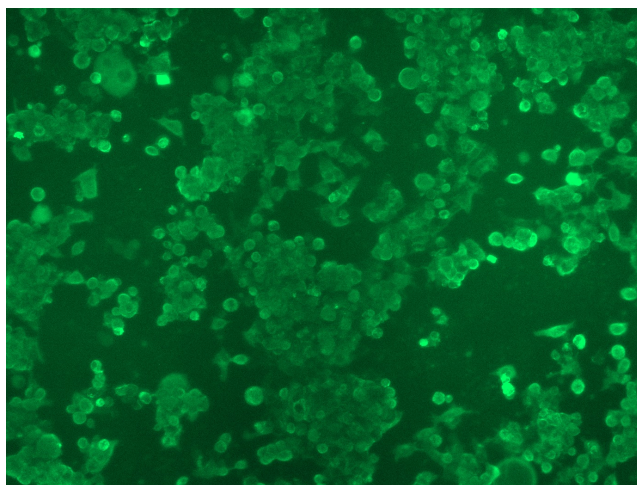
MW: 97.46 kDa

Gene Summary: This gene encodes a classical cadherin of the cadherin superfamily. Alternative splicing results in multiple transcript variants, at least one of which encodes a preproprotein that is proteolytically processed to generate the mature glycoprotein. This calcium-dependent cell-cell adhesion protein is comprised of five extracellular cadherin repeats, a transmembrane region and a highly conserved cytoplasmic tail. Mutations in this gene are correlated with gastric, breast, colorectal, thyroid and ovarian cancer. Loss of function of this gene is thought to contribute to cancer progression by increasing proliferation, invasion, and/or metastasis. The ectodomain of this protein mediates bacterial adhesion to mammalian cells and the cytoplasmic domain is required for internalization. This gene is present in a gene cluster with other members of the cadherin family on chromosome 16. [provided by RefSeq, Nov 2015]

Product images:



[RC220731L3] was used to prepare Lentiviral particles using [TR30037] packaging kit. HEK293T cells were transduced with RC220731L3V particle to overexpress human CDH1-Myc-DDK fusion protein.



[RC220731L3] was used to prepare Lentiviral particles using [TR30037] packaging kit. HEK293T cells were transduced with RC220731L3V particle to overexpress human CDH1-Myc-DDK fusion protein.