

Product datasheet for **RC220717**

Myelin expression factor 2 (MYEF2) (NM_016132) Human Tagged ORF Clone

Product data:

Product Type:	Expression Plasmids
Product Name:	Myelin expression factor 2 (MYEF2) (NM_016132) Human Tagged ORF Clone
Tag:	Myc-DDK
Symbol:	Myelin expression factor 2
Synonyms:	HsT18564; MEF-2; MST156; MSTP156; myEF-2
Mammalian Cell Selection:	Neomycin
Vector:	pCMV6-Entry (PS100001)
E. coli Selection:	Kanamycin (25 ug/mL)



[View online »](#)

ORF Nucleotide Sequence:

>RC220717 representing NM_016132
 Red=Cloning site Blue=ORF Green=Tags(s)

TTTTGTAATACGACTCACTATAGGGCGGCCGGAATTCGTCGACTGGATCCGGTACCGAGGAGATCTGCC
 GCC**CGCATCGCC**

ATGGCGGACGCCAACAGGCCGAGGTGCCCGGGCCACTGGTGGCGACAGCCCGCACCTGCAGCCCGCAG
 AGCCGCCGGCGAGCCGGCGAGAGCCGACCCCGGAGGCGGAGAAGCAGCAGCCGAGCACAGCAG
 CAGCTCCAATGGCGTTAAATGGAGAATGATGAATCAGCAAAAAGAGAATCTGACTTAAAGGAAAA
 TCTACAGGAAGTAAGAAGCCAATAGATTTTCATCCTTATTCAAAAGACAAGAATTCGGGCACTGGAGAAA
 AGAAGGGTCCAAATCGTAACAGAGTTTTTCATTAGCAACATCCCATATGACATGAAATGGCAAGCTATTAA
 AGATCTAATGAGAGAGAAAGTTGGTGAGGTTACATACGTGGAGCTCTTAAAGGATGCGGAAGGAAAAATCA
 AGGGGTTGTGGTGGTTGAATTCAAAGATGAAGAATTTGTAAGAAAGCCCTAGAACTATGAACAAAT
 ATGATCTTAGTGAAGACCCCTTAATATTAAGAGGATCCTGATGGAGAAAATGCTCGTAGGGCATTGCA
 GCGAACAGGAGGATCATTCCAGGAGGACAGTCCCTGATATGGGATCAGGGTTGATGAATTTACCACCT
 TCCATACTCAATAATCCAACATTCCCTCCTGAAGTCATCAGTAATTTGCAGGCCGGTAGACTTTGGTTCCA
 CAATTTTTGTTGCCAATCTTGACTTCAAAGTTGGTTGGAAGAAGCTAAAGGAAGTTTCAGCATAGCTGG
 AACTGTGAAGCGGGCAGATATTAAGAAGACAAAGATGGCAAGAGCAGAGGAATGGGCACTGTCACTTTT
 GAGCAAGCAATGAAGCAGTTCAAGCAATTTCTATGTTCAATGGGCGATTTTTATTTGATAGACCTATGC
 ATGTGAAAATGGATGACAAGTCTGTTCCCTCATGAAGAGTACCGTTCACATGATGGTAAAACACCACAATT
 ACCACGTGGTCTTGGAGGCATTTGGATGGGACTTGGTCCGGTGGACAGCCTATTAGTGCCAGCCAGTTG
 AACATAGGTGGAGTAATGGGAAATTTAGGTCCAGGTGGATGGGAATGGATGGTCCAGGTTTTGGAGGAA
 TGAATAGAATGGAGGAGGAATAGGGTTGGTGGTCTGGAAGCAATGAATAGCATGGGAGGATTTGGAGG
 AGTTGGCCGAATGGGAGAGCTGTACCGTGGTGCATGACTAGTAGCATGGAGCGAGATTTTGGACGTGGT
 GATATTGGAATAAATCGAGGCTTTGGAGATTCTTTGGTAGACTTGGCAGTGCAATGATTGGAGGTTTTG
 CAGGAAGAATAGGATCTTCTAACATGGGTCAGTAGGATCTGGAATAAGTGGTGAATGGGTAGCATGAA
 CAGTGTGACTGGAGGAATGGGATGGGACTGGACCGGATGAGTTCAGCTTTGATAGAATGGGACCAGGT
 ATAGGAGCTATACTGAAAGGAGCATCGATATGGATCGAGGATTTTTATCGGGTCCAATGGGAAGCGGAA
 TGAGAGAGAGAATAGGCTCCAAAGGCAACCAGATTTTGTGAGAAATCTACCTTTTACTTGACTTGCCA
 GAACTAAAAGAGAAATTCAGTCAGTGTGGTCAATGATGTTTGCAGAAAATAAAATGGAGAATGGAAAG
 TCAAAAGGCTGTGGAACAGTCAGATTTGACTCCCAGAATCAGCTGAAAAAGCCTGCAGAAATAATGAATG
 GCATAAAATCAGTGGCAGAGAAATTGATGTTTCGCTTGGATCGTAATGCA

ACGCGTACGCGGCCGCTCGAGCAGAAACTCATCTCAGAAGAGGATCTGGCAGCAAATGATATCCTGGATT
 ACAAGGATGACGACGATAAGGTTTAA

Protein Sequence:

>RC220717 representing NM_016132
 Red=Cloning site Green=Tags(s)

MADANKAEVPGATGGDSPHLQPAEPPGEPREPHPAEAEKQQPQHSSSSNGVKMENDESAAKEEKSDLKEK
 STGSKKANRPHYPYKDKNSGTGEKKGPNRNRVFNISNIPYDMKWQAIKDLMREKVGVEVYVELFKDAEGKS
 RCGGVVEFKDEEFVKKALETMNKYDLGRPLNIKEDPDGENARRALQRTGGSFPGGHVPMGSLMNLPP
 SILNPNIPPEVISNLQAGRLGSTIFVANLDFKVGWKKLKEVFSIAGTVKRADIKEDKDGKSRGMGTVTF
 EQAIEAVQAI SMFNGQFLFDRPMHVKMDDKSVPHEEYRSHDGKTPQLPRGLGGIGMGLPGGGQPI SASQL
 NIGGVVMGMLPGGMGMDPGPGFMNRIGGGIGFGLLEAMNSMGGFGVGRMGEL YRGAMTSSMERDFGRG
 DIGINRFGDSFGRGSGAMIGGFAGRIGSSNMGPVGSISGGMGSMSVTTGGMGMGLDRMSSSFDRMGPG
 IGAILERSIDMDRGFLSGPMGSMRERIGSKGNQIFVNRNLPFDL TWQKLKEKFSQCGHVMFAEIKMENGK
 SKGCGTVRFDSPESA EKACRIMNGIKISGREIDVRLDRNA

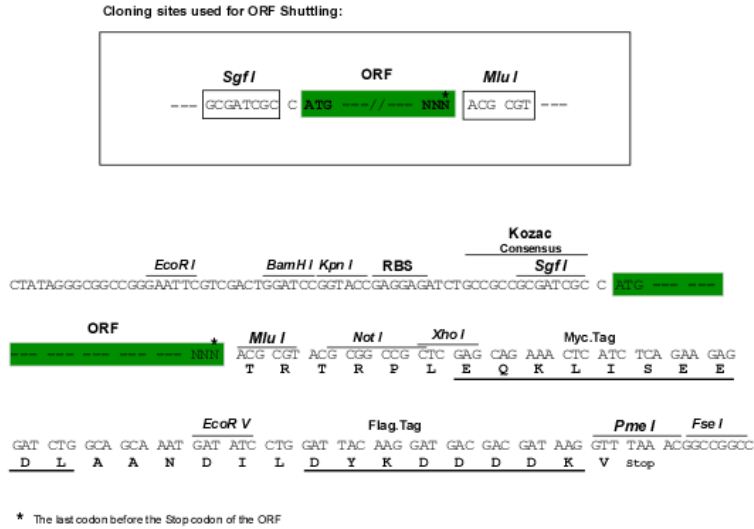
TRTRPLEQKLISEEDLAANDILDYKDDDDKV

Chromatograms:

https://cdn.origene.com/chromatograms/mk8042_b06.zip

Restriction Sites: SgfI-MluI

Cloning Scheme:



ACCN: NM_016132

ORF Size: 1800 bp

OTI Disclaimer: The molecular sequence of this clone aligns with the gene accession number as a point of reference only. However, individual transcript sequences of the same gene can differ through naturally occurring variations (e.g. polymorphisms), each with its own valid existence. This clone is substantially in agreement with the reference, but a complete review of all prevailing variants is recommended prior to use. [More info](#)

OTI Annotation: This clone was engineered to express the complete ORF with an expression tag. Expression varies depending on the nature of the gene.

Components: The ORF clone is ion-exchange column purified and shipped in a 2D barcoded Matrix tube containing 10ug of transfection-ready, dried plasmid DNA (reconstitute with 100 ul of water).

- Reconstitution Method:**
1. Centrifuge at 5,000xg for 5min.
 2. Carefully open the tube and add 100ul of sterile water to dissolve the DNA.
 3. Close the tube and incubate for 10 minutes at room temperature.
 4. Briefly vortex the tube and then do a quick spin (less than 5000xg) to concentrate the liquid at the bottom.
 5. Store the suspended plasmid at -20°C. The DNA is stable for at least one year from date of shipping when stored at -20°C.

RefSeq: [NM_016132.4](#), [NP_057216.2](#)

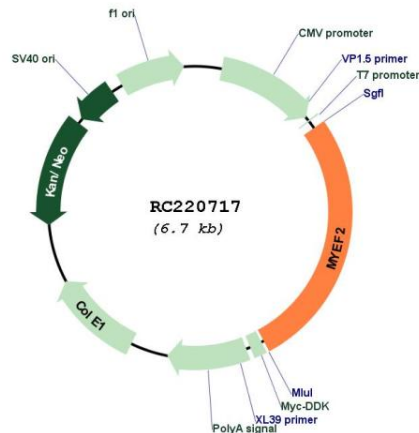
RefSeq Size: 4544 bp

RefSeq ORF: 1803 bp

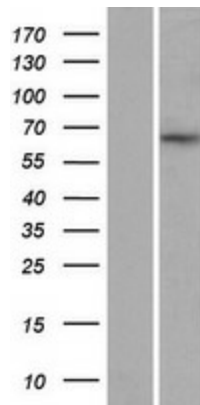
Locus ID: 50804

UniProt ID: [Q9P2K5](#)
Cytogenetics: 15q21.1
Domains: RRM
Protein Families: Transcription Factors
MW: 64 kDa
Gene Summary: Transcriptional repressor of the myelin basic protein gene (MBP). Binds to the proximal MB1 element 5'-TTGTCC-3' of the MBP promoter. Its binding to MB1 and function are inhibited by PURA (By similarity).[UniProtKB/Swiss-Prot Function]

Product images:



Circular map for RC220717



Western blot validation of overexpression lysate (Cat# [LY414161]) using anti-DDK antibody (Cat# [TA50011-100]). Left: Cell lysates from untransfected HEK293T cells; Right: Cell lysates from HEK293T cells transfected with RC220717 using transfection reagent MegaTran 2.0 (Cat# [TT210002]).