

Product datasheet for **RC220714**

SPRED1 (NM_152594) Human Tagged ORF Clone

Product data:

Product Type:	Expression Plasmids
Product Name:	SPRED1 (NM_152594) Human Tagged ORF Clone
Tag:	Myc-DDK
Symbol:	SPRED1
Synonyms:	hSpred1; LGSS; NFLS; PPP1R147; spred-1
Mammalian Cell Selection:	Neomycin
Vector:	pCMV6-Entry (PS100001)
E. coli Selection:	Kanamycin (25 ug/mL)



[View online »](#)

ORF Nucleotide
Sequence:

>RC220714 representing NM_152594
Red=Cloning site Blue=ORF Green=Tags(s)

TTTTGTAATACGACTCACTATAGGGCGGCCGGAATTCGTCGACTGGATCCGGTACCGAGGAGATCTGCC
GCCGCGATCGCC

ATGAGCGAGGAGACGGCGACTTCTGACAACGATAAATGTTATGCACGAGTGCAGCTGTGGTGTATGACCC
GAGATGACTCAAGTGGTGGATGGTTACCACTTGGAGGGAGTGGACTAAGCAGCGTCACTGTCTTCAAAGT
CCCTCATCAGGAAGAGAATGGCTGTGCTGACTTTTTTATCCGTGGAGAGCGACTCAGGGACAAAATGGTG
GTTTTGGAATGTATGCTTAAAAAGACCTCATTATAATAAGGCTCACTCCAACATTTCACTACTGGAAGA
TTGATGACAAAAAGTTTGGTCTTACGTTTCAAAGTCTGCTGATGCTAGGGCTTTTATAGAGGTATCCG
AAGAGCTATAGAGGATATTTCTCAAGGATGCCCGAATCAAAAATGAAGCTGAAGGGGCAGATGACTTA
CAAGCAAATGAAGAGGATTTCCAGTTCTCTAGTGAAGGATCACCTTTTTCAGCAAGAGACAGTTGTTA
CCAGTGAGCCTTATAGAAGCTCAAATATAAGACCTTCTCCCTTTGAAGATCTGAATGCCAGAAGAGTCTA
CATGCAAAGCCAAGCCAATCAGATAACATTTGGTCAGCCAGGCTTGGACATTCAGAGCAGAAGTATGGAA
TACGTACAGCGCAAATATCCAAGGAATGTGGAAGCCTAAAGTCCAAAATAGGGTCCCTTTGAAATCAA
TCAGACATGTCAGCTTCAAGATGAGGATGAGATTGTCAGAATAAACCTCGAGATATCTTAATACGTCCG
CTATGCAGACTACAGACATCCTGACATGTGAAAAATGACTTGGAAAGAGATGATGCTGATTCCAGTATT
CAGTTTTCTAAACCAGACAGTAAAAATCAGACTATCTGTACTCTTGTGGGGATGAGACTAAGTTAAGTT
CACCCAAAGACTCTGTGGTATTTAAGACGCAGCCTTCTCATTAAAAATTAAGAAGTCAAAACGAAGAAA
AGAGGATGGTGAACGTTCTCGTGCATATACTGCCAGGAAAGTTAATCATGAAGAAAATGTCAGGGGA
AAATGTCAGGATGCTCCAGACCTATTAAGATGCATATCAAGTTAGTTGCATGCTCTGTGCAGAGA
GCATGTTGTATCATTGTATGTCAGACTCAGAGGGAGATTTTCTGATCCCTGTTCTGTGACACTAGCGA
CGACAAGTTCTGCTTGCATGGTTAGCCCTGGTAGCTTTGTCTTTCATTGTACCATGTATGTGCTGTCTAC
GTCCCTTTGAGAATGTGCCATCGCTGTGGTGAAGCATGTGGTGTGCTGTGGTGGGAAACATAAAGCTGCTG
GA

ACGCGTACGCGGCCGCTCGAGCAGAACTCATCTCAGAAGAGGATCTGGCAGCAAATGATATCCTGGATT
ACAAGGATGACGACGATAAGGTTTAA

Protein Sequence:

>RC220714 representing NM_152594
Red=Cloning site Green=Tags(s)

MSEETATSDNDSYARVRAVVMTRDDSSGGWPLGGSSVTVFKVPHQEENGCADFFIRGERLRDKMV
VLECMLKKDLIYNKVPTFHHWKIDDKKFGFTFQSPADARAFDRGIRRAIEDISQGCPEKNEAEGADDL
QANEEDSSSSLVKDHLFQQETVVTSEPYRSSNIRPSPFEDLNARRVYMQSQANQITFGQPLDIQSRSM
YVQRQISKECGSLKSQNRVPLKSIRHVSFQDEDEIVRINPRDILIRRYADYRHPDMWKNDLERDDADSSI
QFSKPDSSKSDYLYSCGETKLSPPKDSVVFKTQPSSLKIKKSKRRKEDGERSRCVYQCERFNHEENVRG
KCQDAPDPKRCIYQVSCMLCAESMLYHMSDSEGDSDPCSCDTSDDKFCLRWLALVALSFIVPCMCCY
VPLRMCHRCGEACGCCGKHAAG

TRTRPLEQKLISEEDLAANDILDYKDDDDKV

Chromatograms:

https://cdn.origene.com/chromatograms/mk6481_a10.zip

Restriction Sites:

Sgfl-MluI

Cloning Scheme:


ACCN: NM_152594

ORF Size: 1332 bp

OTI Disclaimer: The molecular sequence of this clone aligns with the gene accession number as a point of reference only. However, individual transcript sequences of the same gene can differ through naturally occurring variations (e.g. polymorphisms), each with its own valid existence. This clone is substantially in agreement with the reference, but a complete review of all prevailing variants is recommended prior to use. [More info](#)

OTI Annotation: This clone was engineered to express the complete ORF with an expression tag. Expression varies depending on the nature of the gene.

Components: The ORF clone is ion-exchange column purified and shipped in a 2D barcoded Matrix tube containing 10ug of transfection-ready, dried plasmid DNA (reconstitute with 100 ul of water).

Reconstitution Method:

1. Centrifuge at 5,000xg for 5min.
2. Carefully open the tube and add 100ul of sterile water to dissolve the DNA.
3. Close the tube and incubate for 10 minutes at room temperature.
4. Briefly vortex the tube and then do a quick spin (less than 5000xg) to concentrate the liquid at the bottom.
5. Store the suspended plasmid at -20°C. The DNA is stable for at least one year from date of shipping when stored at -20°C.

RefSeq: [NM_152594.1](#), [NP_689807.1](#)

RefSeq Size: 3816 bp

RefSeq ORF: 1335 bp

Locus ID: 161742

UniProt ID: [Q7Z699](#)

Cytogenetics: 15q14

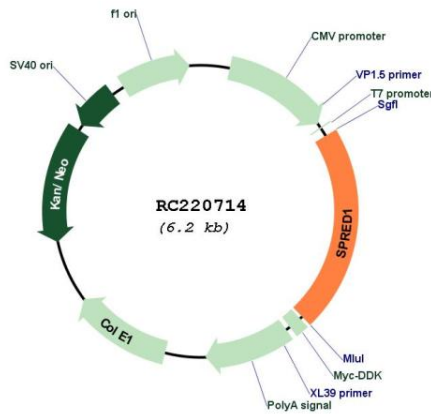
Domains: WH1

Protein Pathways: Jak-STAT signaling pathway

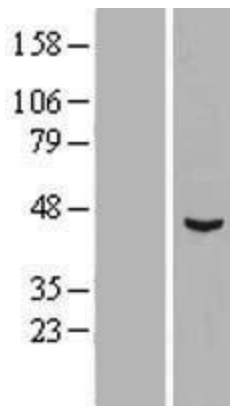
MW: 50.3 kDa

Gene Summary: The protein encoded by this gene is a member of the Sprouty family of proteins and is phosphorylated by tyrosine kinase in response to several growth factors. The encoded protein can act as a homodimer or as a heterodimer with SPRED2 to regulate activation of the MAP kinase cascade. Defects in this gene are a cause of neurofibromatosis type 1-like syndrome (NFLS). [provided by RefSeq, Jul 2008]

Product images:



Circular map for RC220714



Western blot validation of overexpression lysate (Cat# [LY407400]) using anti-DDK antibody (Cat# [TA50011-100]). Left: Cell lysates from untransfected HEK293T cells; Right: Cell lysates from HEK293T cells transfected with RC220714 using transfection reagent MegaTran 2.0 (Cat# [TT210002]).