

Product datasheet for **RC220705**

SCUBE1 (NM_173050) Human Tagged ORF Clone

Product data:

Product Type:	Expression Plasmids
Product Name:	SCUBE1 (NM_173050) Human Tagged ORF Clone
Tag:	Myc-DDK
Symbol:	SCUBE1
Mammalian Cell Selection:	Neomycin
Vector:	pCMV6-Entry (PS100001)
E. coli Selection:	Kanamycin (25 ug/mL)



[View online »](#)

ORF Nucleotide Sequence:

>RC220705 representing NM_173050
 Red=Cloning site Blue=ORF Green=Tags(s)

TTTTGTAATACGACTCACTATAGGGCGGCCGGGAATTCGTCGACTGGATCCGGTACCGAGGAGATCTGCC
 GCC**CGCATCGCC**

ATGGGCGCGGCCGCGCTGCGCTGGCACTTGTGCGTGTGCTGGCCCTGGGCACACCGGGCGGCTGGCCG
 GGGCAGCGGGCTCCAGGGTCAGTCGACGTGGATGAGTGCTCAGAGGGACAGATGACTGCCACATCGA
 TGCCATCTGTGAGAACACGCCAAGTCCTACAATGCCTCTGCAAGCCAGGCTACAAGGGGAAGGCAAG
 CAGTGTGAAGACATTGACGAGTGTGAGAATGACTACTACAATGGGGCTGTGTCCACGAGTGCATCAACA
 TCCCGGGAACTACAGGTGTACCTGCTTTGATGGCTTCATGCTGGCACACGATGGACACAACCTGCCTGGA
 TGTGGACGAGTGTGAGGACAATAATGGTGGCTGCCAGCAGATCTGCGTCAATGCCATGGGCGACTACGAG
 TGTGAGTCCACAGTGGCTTCTCCTTAGTGACAACCAGCATACCTGCATCCACCCTCCAATGAGGGTA
 TGAAGTGCATGAACAAAGACCATGGCTGTGCCACATCTGCCGGAGACGCCAAAGGTGGGGTGGCCCTG
 CGACTGCAGGCCCGGCTTTGACCTTGCCAAAACCCAGAAAGGACTGCACACTAACCTGTAATTATGAAAC
 GGAGGCTGCCAGCACAGCTGTGAGGACACAGACACAGGCCCCACGTGTGGTTGCCACCAGAAGTACGCC
 TCCACTCAGACGGTGCACGTGCATCGAGACGTGCGCAGTCAATAACGGAGGCTGCGACCCGACATGCAA
 GGACACAGCCACTGGCGTGCATGCAGCTGCCCGTTGGATTCACTGCAGCCGGACGGGAAGACATGC
 AAAGACATCAACGAGTGCCTGGTCAACAACGGAGGCTGCGACCACTTCTGCCCAACACCGTGGGCGCT
 TCGAGTGGCGTGGCGAAGGGCTACAAGTGTCAACGACGAGCGCACCTGCCAGGACATCGACGAGTG
 CTCCTTCGAGCGGACCTGTGACCACATCTGCATCAACTCCCCGGGAGCTTCCAGTGCCTGTGTACCCG
 GGCTACATCCTTACGGGACAACCCACTGCGGAGATGTGGACGAGTGCAGCATGAGCAACGGGAGCTGTG
 ACCAGGGCTGCGTCAACCAAGGGCAGCTACGAGTGCCTGTCCCCGGGGAGGCGGCTCCACTGGAA
 CGGGAAGGATTGCGTGGAGACAGGCAAGTGTCTTCTCGCGCAAGACCTCCCCCGGGCCAGCTGTCC
 TGACGCAAGGCAGGCGGTGTGGAGAGCTGCTTCTTCTGCCCCGCTCACACACTTCTCGTCCAGACT
 CGGAAAATAGCTACGTCCTGAGCTGCGGAGTTCAGGGCCGACGGCAAGGCGCTGCAGAAAACGCAACGG
 CACCAGCTCTGGCCTCGGGCCAGCTGCTCAGATGCCCCACCACCCCATCAAACAGAAGGCCCGCTTC
 AAGATCCGAGATGCCAAGTGCACCTCCGGCCCCACAGCCAGGCACGAGCAAAGGAGACCGCCAGGCAGC
 CGCTGCTGGACCACTGCCATGTGACTTTCGTGACCCTCAAGTGTGACTCCTCAAGAAGAGGCGCCGTGG
 CCGCAAGTCCCCATCAAGGAGGTGTCCACATCACAGCAGAGTTTGGATCGAGACAAAGTGAAGAG
 GCCTCAGACACATGCGAAGCGGACTGCTTGGGAAGCGAGCAGAACAGAGCCTGCAGGCCCCATCAAGA
 CCCTGCGCAAGTCCATCGGCCGGCAGCAGTTCTATGTCCAGGTCTCAGGCACTGAGTACGAGGTAGCCCA
 GAGGCCAGCCAAGGCGCTGGAGGGGCAGGGGCGATGTGGCGCAGGCCAGGTGCTACAGGACAGCAATGC
 GTTGCCTGTGGGCTGGCACCCACTTCGGTGGTGTGAGCTCGGCCAGTGTGTGTATGTATGCCAGGAACAT
 ACCAGGACATGGAAGGCCAGTCAAGTGCACACCGTGGCCAGCAGCGACGGGCTTGGTCTGCCTGGTGC
 CCGCAACGTGTGGAATGTGGAGGCCAGTGTCTCCAGGCTTCTTCTCGGCCGATGGCTTCAAGCCCTGC
 CAGGCCCTGCCCGTGGGCACGTACCAGCCTGAGCCGGGCGCACCGGCTGCTTCCCCTGTGGAGGGGTT
 TGCTCACCAAACACGAAGGCACCACTCCTTCCAGGACTGCGAGGCTAAAGTGCAGTGTCCCCGGCCA
 CCACTACAACACCACCCACCCGCTGCATCCGCTGCCCGTGGCACCTACCAGCCGAGTTTGGCCAG
 AACCACTGCATACCTGTCCGGGCAACACCAGCACAGACTTCGATGGCTCCACCAACGTACACACTGCA
 AAAACCAGCACTGCGGGCGGAGCTTGGTGTGACTACACCGCTACATCGAGTCCCCCAACTACCCTGGCGA
 CTACCCAGCCAACGCTGAATGCGTCTGGACATCGCACCTCCCCAAAGCGCAGGATCCTCATCGTGGTC
 CCTGAGATCTTCTGCCATCGAGGATGAGTGGGCGATGTTCTGGTGTATGAGGAAGAGTGCCTCTCCCA
 CGTCCATCACCACTATGAGACCTGCCAGACCTACGAGAGGCCATCGCCTTCACTCCCCTCCCGCAA
 GCTCTGGATCCAGTTCAAATCCAATGAAGGCAACAGCGGCAAAGGCTTCCAAGTGCCTATGTCACCTAC
 GATGAGGACTACCAGCAACTCATAGAGGACATCGTGCAGATGGGCGCTGTACGCTCGGAGAACCACC
 AGGAAATTTTGAAGACAAGAAGCTGATCAAGGCCCTTTCGACGTGCTGGCGCATCCCCAGAACTACTT
 CAAGTACACAGCCAGGAATCCAAGGAGATGTTCCACGCTCCTTCATCAAACCTGCTGCGCTCAAAGTG
 TCTCGGTTCTGCGGCCCTACAAA

ACGCGTACGCGGCCGCTCGAGCAGAACTCATCTCAGAAGAGGATCTGGCAGCAAATGATATCCTGGATT
 ACAAGGATGACGACGATAAGGTTTAA

Protein Sequence: >RC220705 representing NM_173050
 Red=Cloning site Green=Tags(s)

```

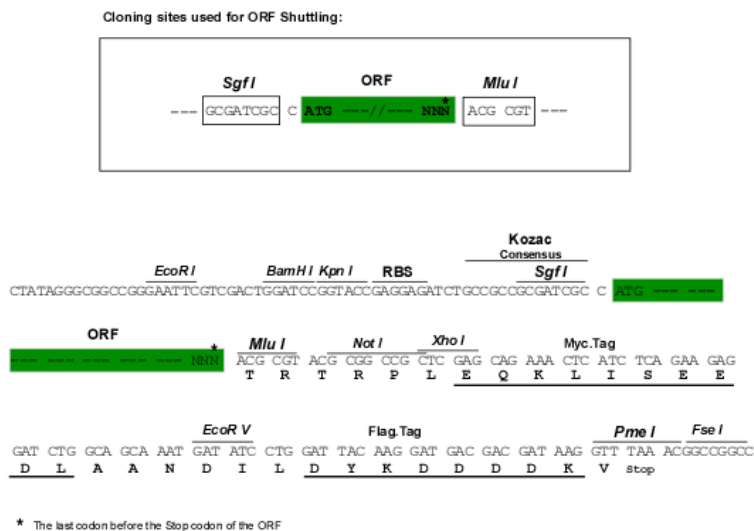
MGAAAVRWHL CVLLALGTRGRLAGGSGLPGSVDVDECSEGTDDCHIDAICQNTPKSYKCLCKPGYKGEK
QCEDIDECENDYNGGCVHECINIPGNRYRCTCFDGFMLAHDGHNCLDVDECQDNNGGCQQICVNAMGSYE
CQCHSGFFLSDNQHTCIHRSNEGMNMCNKDHGCAHICRETPKGGVACDCRPGFDLAQNQKDCTLTCNYGN
GGCQHSCEDTDTGPTCGCHQKYALHSDGRTCIETCAVNNGGCDRTCKDTATGVRCSCPVGFLLQPDGKTC
KDINECLVNNGGCDHFCRNTVGSFECGCRKGYKLLTDERTCQDIDECSFERTCDHICINSPGSFQCLCHR
GYILYGTTHCGDVDECSMSNGSCDQGCVNTKGSYECVCPGRRHLHWNGKDCVETGKCL SRAKTSRAQLS
CSKAGGVE SCFLS CPAHTL FVPDSENSYVLSCGVPGPQKALQKRNGTSSGLGPS CSDAPTTPIKQKARF
KIRDAKCHLRPHSQARAKETARQPLLDHCHVTFVTLKCDSSKRRRRGRKSPSKEVSHITAEFEIETKMEE
ASDTCEADCLRKRAEQSLQAAIKTLRKSIGRQQFYVQVSGTEYEVAQRPAKALEGGQACGAGQVLQDSKC
VACGPGTHFGGELGQCVSCMPGT YQDMEGQLSCTPCPSSDGLGLPGARNVSECGGQCSPGFFSADGFKPC
QACPVGT YQPEPGR TGCFPCGGLLTKHEGTTSFQDCEAKVHCS PGHHYNTTTHRCIRCPVGT YQPEFGQ
NHCITCPGNTSTDFDGSTNVTHCKNQHC GGELGDYTG YIESPNYPGDY PANAECVWHIAPPPKRRILIVV
PEIFLPIEDECGDVLV MRKSASPTSITTYETCQTYERPIAFTSR SRKLW IQFKSNEGNSGKGFQVPYVTY
DEDYQQLIEDIVRDGRLYASENHQEILKDKKLIKALFDVLAHPQNYFKYTAQESKEMFPRSFIKLLRSKY
SRFLRPYK
  
```

TRTRPLEQKLISEEDLAANDILDYKDDDDKV

Chromatograms: https://cdn.origene.com/chromatograms/mk6253_e04.zip

Restriction Sites: SgfI-MluI

Cloning Scheme:

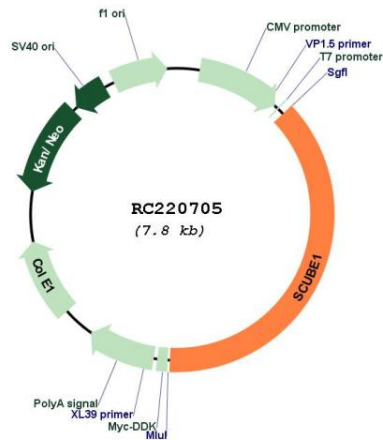


ACCN: NM_173050

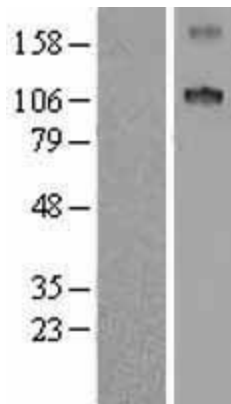
ORF Size: 2964 bp

OTI Disclaimer:	The molecular sequence of this clone aligns with the gene accession number as a point of reference only. However, individual transcript sequences of the same gene can differ through naturally occurring variations (e.g. polymorphisms), each with its own valid existence. This clone is substantially in agreement with the reference, but a complete review of all prevailing variants is recommended prior to use. More info
OTI Annotation:	This clone was engineered to express the complete ORF with an expression tag. Expression varies depending on the nature of the gene.
Components:	The ORF clone is ion-exchange column purified and shipped in a 2D barcoded Matrix tube containing 10ug of transfection-ready, dried plasmid DNA (reconstitute with 100 ul of water).
Reconstitution Method:	<ol style="list-style-type: none">1. Centrifuge at 5,000xg for 5min.2. Carefully open the tube and add 100ul of sterile water to dissolve the DNA.3. Close the tube and incubate for 10 minutes at room temperature.4. Briefly vortex the tube and then do a quick spin (less than 5000xg) to concentrate the liquid at the bottom.5. Store the suspended plasmid at -20°C. The DNA is stable for at least one year from date of shipping when stored at -20°C.
RefSeq:	NM_173050.5
RefSeq Size:	2992 bp
RefSeq ORF:	2967 bp
Locus ID:	80274
UniProt ID:	Q8IWY4
Cytogenetics:	22q13.2
Domains:	CUB, EGF_CA, EGF, EGF
Protein Families:	Druggable Genome, Secreted Protein
MW:	107.7 kDa
Gene Summary:	This gene encodes a cell surface glycoprotein that is a member of the SCUBE (signal peptide, CUB domain, EGF (epidermal growth factor)-like protein) family. Family members have an amino-terminal signal peptide, nine copies of EGF-like repeats and a CUB domain at the carboxyl terminus. This protein is expressed in platelets and endothelial cells and may play an important role in vascular biology. [provided by RefSeq, Oct 2011]

Product images:



Circular map for RC220705



Western blot validation of overexpression lysate (Cat# [LY403543]) using anti-DDK antibody (Cat# [TA50011-100]). Left: Cell lysates from untransfected HEK293T cells; Right: Cell lysates from HEK293T cells transfected with RC220705 using transfection reagent MegaTran 2.0 (Cat# [TT210002]).