

Product datasheet for **RC220704**

COG5 (NM_181733) Human Tagged ORF Clone

Product data:

Product Type:	Expression Plasmids
Product Name:	COG5 (NM_181733) Human Tagged ORF Clone
Tag:	Myc-DDK
Symbol:	COG5
Synonyms:	CDG2I; GOLTC1; GTC90
Mammalian Cell Selection:	Neomycin
Vector:	pCMV6-Entry (PS100001)
E. coli Selection:	Kanamycin (25 ug/mL)



[View online »](#)

ORF Nucleotide
Sequence:

>RC220704 representing NM_181733
Red=Cloning site Blue=ORF Green=Tags(s)

TTTTGTAATACGACTCACTATAGGGCGGCCGGGAATTCGTCGACTGGATCCGGTACCGAGGAGATCTGCC
GCCGCGATCGCC

ATGGGCTGGGTGGGCGGGCGGCCGGGATTCTGCGTCACCACCTGGGCGGAGCCGTTCTGCTGCTGACG
ACATCAACCCGGCACCTGCCAACATGGAAGGTGGCGGGCGCAGCGTCGCTGTAGCTGGCCTCGGAGCTCG
AGGCTCTGGAGCGGCTGCAGCTACAGTCCGGGAATTCTGCAGGACGGGTGTTATAGTACTTTTTAAAC
GAAGACTTTGATGTAAGACTTATACTTCTCAATCTATTCATCAAGCTGTAATTGCTGAACAACCTAGCAA
AACTTGCCCAAGGAATCAGTCAGTTGGACAGAGAATACTTACAGTTGTTGCAAGACATGAAGATTT
ACTGGCACAAGCAACTGGGATTGAGTCGTTGGAAGGTGTTCTTCAGATGATGCAGACGAGAATTGGGGCT
TTACAGGGAGCTGTTGATAGGATAAAAGCAAAAATTTGTTGAACCATACAATAAGATAGTTGCCCGGACTG
CACAACCTAGCAAGACTTCAGTTGCCTGTGATTTGCTTCGGAGGATTATTCGATCTTGAATCTCAGTAA
GAGACTCCAAGGACAACGCAAGGGGAAGTAGAGAGATAACAAAAGCTGCTCAGAGTCTCAATGAACCT
GATTATCTTTCTCAAGGAATAGATCTTTCTGGAATAGAAGTGATAGAAAATGATCTACTTTTTATTGCAA
GAGCCCGACTTGAAGTGGAATCAAGCTAAGCGCCTACTAGAGCAGGGTTTGGAGACTCAGAATCCAAC
TCAAGTCGGAACAGCTCTTCAGTTTTCTATAATCTTGAACCTTTGAAGGATACTATTACCAGTGTGTG
GATGGATATTGTGCTACTTTAGAAGAAAATATCAACAGTGCATTAGACATAAAAAGTTTTGACTCAGCCTT
CCCAGTCAGCTGTGAGAGGGGGACTGGACGATCTACCATGCCAACCCAGGAAATACTGCAGCTTTGCG
TGCCCTATTCTGGACCAATATGGAGAACTTATGGATCATATTTATGCTGTTTGTGGACAGGTACAACAT
CTACAAAAGTATTGGCCAAGAAGAGAGATCCTGTTTCTCACATTTGTTTCATTGAAGAAATAGTTAAGG
ATGGACAACCCGAAATTTTCTACACATTTTGAATTCAGTTACTCAGGCACCTTTCTCAATTTCCAT
GGCAACAACCTCTTCGATGTTTTTGAAGCAGGCATTTGAAGGAGAATACCCTAAATTTATACGTCTTTAT
AATGACTTATGGAAGCGTCTTCAACAATACAGTCAGCATATCCAAGGAAATTTAATGCAAGTGGAACTA
CAGACCTCTATGTTGACCTACAACACATGGAAGATGATGCACAAGATATATTCATAACAAAAAGCCAGA
TTATGATCCAGAAAAGGCTTTGAAAGACTCACTACAACCTATGAGGCTGCTTATCTATCAAAAATCCTTA
TCTCGACTCTTCGATCCTATCAACTTGGTTTTTCCCCGGGTGGTCGTAATCCTCCTTCTCTGATGAAC
TTGATGGTATTATAAAACCTATAGCAAGTGAACAAATGTTGCTGCTGTTGATACAAACCTCACATTAGC
TGTGTCAAAAAATGTGGCAAAGACCATCCAGTTATACAGTGTAAAATCAGAGCAGCTTCTCTCCACACAA
GGAGATGCAAGTCAGGTGATTGGCCTTACTGAAGGACAGAGAAGAAATGTGGCAGTAGTGAATTCAT
TGTATAAGTTGCCAATCAGTAACAAAAGCTATTCATGCTCTTATGGAAAATGCTGTGCAACCCCTACT
CACTTCTGTGGGAGATGCTATAGAGGCCATAATCATCACCATGCATCAAGAAGACTTTTTCTGGGTCATTA
TCCAGCTCAGGAAAACCTGATGTTCTTGTCTGTACATGAAGGAGCTACAAGTTTTATTGCCAGAG
TTATGAGTGACTATTTAAACACTTTGAATGCTTGGATTTTGTCTTTGACAACACTGAGGCTATTGCCCA
AAGAGCTGTTGAACTTTTATCCGCCATGCCAGTCTATAAGACCTCTTGGTGAAGGTGGGAAAATGCGA
CTTGCTGCTGATTTTGCACAGATGGAGTTGGCTGTGGTCCATTTCTGTAGACGAGTATCTGATTTAGGAA
AGTCCATCGGATGCTGAGATCATTACAGCTCTGCTCTTCCAGGCAAGTGAACATGTAGCCAGTAGTCC
TGCATTTGGGGATGTGATTCCGTTCCAGCATCATTATTCAGTTTTTGTTCACGAGAGCACCCGCTGAACTG
AAATCTCCTTTCCAGAGGGCAGAGTGGTCCACACACGCTTCTCTCAGTGGCTGGATGACCATCCATCTG
AAAAGGACAGGCTCCTCCTCATCAGGGAGCCCTGGAAGCTTATGTTCAATCAGTGAGAAGTAGAGAAGG
CAAAGAATTTGCACCAGTTATCCATAATGGTTCAGCTGCTTCAAAGGCTATGTCTGCTCTTCAG

ACGCGTACGCGGGCGCTCGAGCAGAACTCATCTCAGAAGAGGATCTGGCAGCAATGATATCCTGGATT
ACAAGGATGACGACGATAAGGTTTAA

Protein Sequence: >RC220704 representing NM_181733
 Red=Cloning site Green=Tags(s)

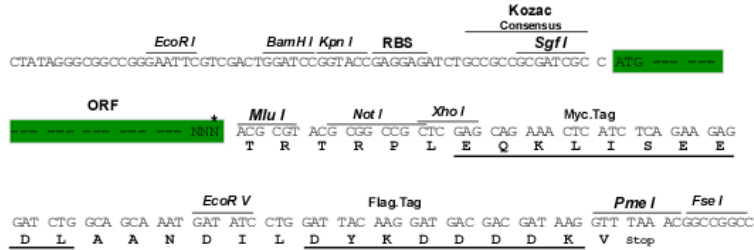
MGWVGRRRDSASPPGRSRSAAADDINPAPANMEGGGGSVAVAGLGARGSGAAAATVRELLQDGCYSDFLN
 EDFDVKTYTSQSIHQAVIAEQLAKLAQGISQLDRELHLQVVARHEDLLAQATGIESLEGVLQMMQTRIGA
 LQGAVDRIKAKIVEPYNKIVARTAQLARLQVACDLLRRIIRILNL SKRLQGQLQGSREITKAAQSLNEL
 DYLSQGIDLSGIEVIENDLLFIARARLEVENQAKRLLEQGLETQNPTQVGTALQVFYNLGLKDTITSV
 DGYCATLEENINSALDIKVLTPSQSAVRGGPGRSTMPGNTAALRASFWNMEKLMMDHIYAVCGQVQH
 LQKVLAKKRDVPVSHICFIEEIVKDGQPEIFYTFWNSVTQALSSQFHMATNSSMFLKQAFEGEYPKLLRLY
 NDLWKRLQQYSQHIQGNFNASGTTDLVYDLQHMEDDAQDIFIPKKPDYDPEKALKDSLQPYEAYLSKSL
 SRLFDPINLVFPPGGRNPPSSDELGGIIKTIASELNVAAVDTNL TLAVSKNVAKTIQLYSVKSEQLLSTQ
 GDASQVIGPLTEGQRRNAVVNLSYKLNHQSVTKAIHALMENAVQPLLSVGDIAEAIITMHQEDFSGSL
 SSSGKPDVPCSLYMKELQGF IARVMSDYFKHFECLEDFVFNTEAIAQRAVELFIRHASLIRPLGEGGKMR
 LAADFAQMEAVGPFCCRVS DLGKSYRMLRSFRPLLFQASEHVASSPALGDVIPFSIIIQFLFTRAPAE
 KSPFQRAEWSHTRFSQWLDHHPSEKDRLLLIRGALEAYVQSVRSREGKEFAPVYPI MVQLLQKAMSALQ

TRTRPLEQKLI SEEDLAANDILDYKDDDDKV

Restriction Sites: Sgfl-Mlul

Cloning Scheme:

Cloning sites used for ORF Shuttling:



* The last codon before the Stop codon of the ORF

ACCN: NM_181733

ORF Size: 2517 bp

OTI Disclaimer: The molecular sequence of this clone aligns with the gene accession number as a point of reference only. However, individual transcript sequences of the same gene can differ through naturally occurring variations (e.g. polymorphisms), each with its own valid existence. This clone is substantially in agreement with the reference, but a complete review of all prevailing variants is recommended prior to use. [More info](#)
OTI Annotation: This clone was engineered to express the complete ORF with an expression tag. Expression varies depending on the nature of the gene.

Components: The ORF clone is ion-exchange column purified and shipped in a 2D barcoded Matrix tube containing 10ug of transfection-ready, dried plasmid DNA (reconstitute with 100 ul of water).

Reconstitution Method:

1. Centrifuge at 5,000xg for 5min.
2. Carefully open the tube and add 100ul of sterile water to dissolve the DNA.
3. Close the tube and incubate for 10 minutes at room temperature.
4. Briefly vortex the tube and then do a quick spin (less than 5000xg) to concentrate the liquid at the bottom.
5. Store the suspended plasmid at -20°C. The DNA is stable for at least one year from date of shipping when stored at -20°C.

RefSeq: [NM_181733.2](#), [NP_859422.2](#)

RefSeq Size: 4817 bp

RefSeq ORF: 2427 bp

Locus ID: 10466

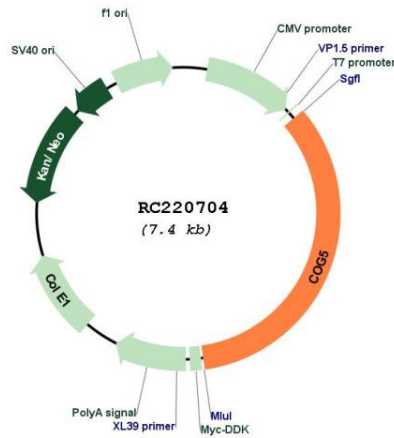
UniProt ID: [Q9UP83](#)

Cytogenetics: 7q22.3

MW: 92.7 kDa

Gene Summary: The protein encoded by this gene is one of eight proteins (Cog1-8) which form a Golgi-localized complex (COG) required for normal Golgi morphology and function. The encoded protein is organized with conserved oligomeric Golgi complex components 6, 7 and 8 into a sub-complex referred to as lobe B. Alternative splicing results in multiple transcript variants. Mutations in this gene result in congenital disorder of glycosylation type 2I.[provided by RefSeq, Jan 2011]

Product images:



Circular map for RC220704