

Product datasheet for RC220701

SNRPB (NM_198216) Human Tagged ORF Clone

Product data:

Product Type:	Expression Plasmids
Product Name:	SNRPB (NM_198216) Human Tagged ORF Clone
Tag:	Myc-DDK
Symbol:	SNRPB
Synonyms:	CCMS; COD; Sm-B/B'; SmB/B'; SmB/SmB'; snRNP-B; SNRPB1
Mammalian Cell Selection:	Neomycin
Vector:	pCMV6-Entry (PS100001)
E. coli Selection:	Kanamycin (25 ug/mL)
ORF Nucleotide Sequence:	>RC220701 representing NM_198216 Red=Cloning site Blue=ORF Green=Tags(s)

TTTTGTAATACGACTCACTATAGGGCGGCCGGAATTCGTCGACTGGATCCGGTACCGAGGAGATCTGCC
GCC**CGATCGCC**

ATGACGGTGGCAAGAGCAGCAAGATGCTGCAGCATATTGATTACAGGATGAGGTGCATCCTGCAGGACG
GCCGGATCTTCATTGGCACCTTCAAGGCTTTTGACAAGCACATGAATTTGATCCTCTGTGACTGTGATGA
GTTTCAGAAAGATCAAGCCAAAGAAGCTCAAACAAGCAGAAAGGGAAGAGAAGCGAGTCCTCGGTCTGGT
CTGCTGCGAGGGGAGAATCTGGTCTCAATGACAGTAGAGGGACCTCTCCAAAGATACTGGTATTGCTC
GAGTTCCACTTGCTGGAGCTGCCGGGGCCAGGGATCGGCAGGGCTGCTGGCAGAGGAATCCCAGCTGG
GGTCCCATGCCCCAGGCTCCTGCAGGACTTGCTGGGCCAGTCCGTGGGGTTGGCCGGCCATCCCAACAG
GTGATGACCCCAAGGAAGAGGTACTGTTGCAGCCGCTGCAGCTGCTGCCACAGCCAGTATTGCCGGGG
CTCCAACCCAGTACCCACCTGGCCGTGGGGTCTCCCCACCTATGGGCCGAGGAGCACCCCTCCAGG
CATGATGGGCCACCTCCTGGTATGAGACCTCCTATGGGTCCCCCAATGGGGATCCCCCTGGAAGAGGG
ACTCAATGGGCATGCCCCCTCCGGAATGCGGCCTCCTCCCCCTGGGATGCGAGGGCCCCCTCCCCCG
GAATGCGCCACCAAGGCC

ACGCGTACGCGGCCGCTCGAGCAGAACTCATCTCAGAAGAGGATCTGGCAGCAAATGATATCCTGGATT
ACAAGGATGACGACGATAAGGTTTAA



[View online »](#)

Protein Sequence: >RC220701 representing NM_198216
Red=Cloning site Green=Tags(s)

MTVGKSSKMLQHIDYRMCILQDGRIFIGTFKAFDKHMNLLCDCDEFRIKPKNSKQAEREKRVLGLV
 LLRGENLVSMTEGPPPKDTGIARVPLAGAAGGPGIGRAAGRGIPAGVMPQAPAGLAGPVRGVGGPSQQ
 VMTPQGRGTVAATAAATAASIAGAPTQYPPGRGGPPPMGRGAPPPGMMGPPPGMRPPMGPMPGIPPPGRG
 TPMGMPPPGMRPPPPGMRGPPPPGMRPPRP

TRTRPLEQKLISEEDLAANDILDYKDDDDKV

Chromatograms: https://cdn.origene.com/chromatograms/mk6477_a09.zip

Restriction Sites: SgfI-MluI

Cloning Scheme:



ACCN: NM_198216

ORF Size: 720 bp

OTI Disclaimer: The molecular sequence of this clone aligns with the gene accession number as a point of reference only. However, individual transcript sequences of the same gene can differ through naturally occurring variations (e.g. polymorphisms), each with its own valid existence. This clone is substantially in agreement with the reference, but a complete review of all prevailing variants is recommended prior to use. [More info](#)

OTI Annotation: This clone was engineered to express the complete ORF with an expression tag. Expression varies depending on the nature of the gene.

Components: The ORF clone is ion-exchange column purified and shipped in a 2D barcoded Matrix tube containing 10ug of transfection-ready, dried plasmid DNA (reconstitute with 100 ul of water).

Reconstitution Method:

1. Centrifuge at 5,000xg for 5min.
2. Carefully open the tube and add 100ul of sterile water to dissolve the DNA.
3. Close the tube and incubate for 10 minutes at room temperature.
4. Briefly vortex the tube and then do a quick spin (less than 5000xg) to concentrate the liquid at the bottom.
5. Store the suspended plasmid at -20°C. The DNA is stable for at least one year from date of shipping when stored at -20°C.

RefSeq: [NM_198216.2](#)

RefSeq Size: 1007 bp

RefSeq ORF: 723 bp

Locus ID: 6628

UniProt ID: [P14678](#)

Cytogenetics: 20p13

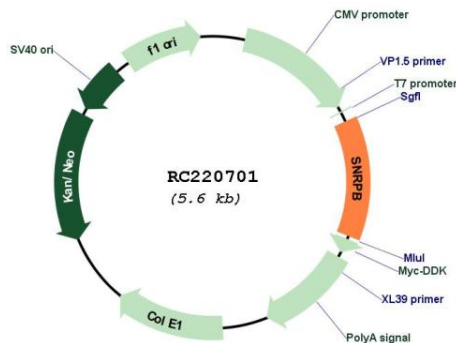
Protein Families: Stem cell - Pluripotency

Protein Pathways: Spliceosome, Systemic lupus erythematosus

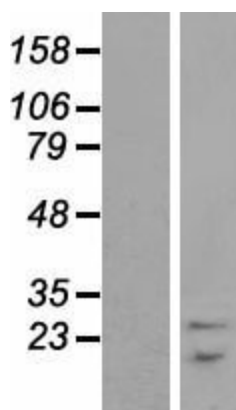
MW: 24.4 kDa

Gene Summary: The protein encoded by this gene is one of several nuclear proteins that are found in common among U1, U2, U4/U6, and U5 small ribonucleoprotein particles (snRNPs). These snRNPs are involved in pre-mRNA splicing, and the encoded protein may also play a role in pre-mRNA splicing or snRNP structure. Autoantibodies from patients with systemic lupus erythematosus frequently recognize epitopes on the encoded protein. Two transcript variants encoding different isoforms (B and B') have been found for this gene. [provided by RefSeq, Jul 2008]

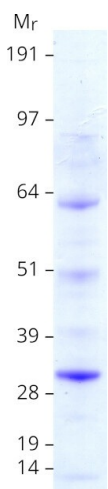
Product images:



Circular map for RC220701



Western blot validation of overexpression lysate (Cat# [LY404878]) using anti-DDK antibody (Cat# [TA50011-100]). Left: Cell lysates from untransfected HEK293T cells; Right: Cell lysates from HEK293T cells transfected with RC220701 using transfection reagent MegaTran 2.0 (Cat# [TT210002]).



Coomassie blue staining of purified SNRPB protein (Cat# [TP320701]). The protein was produced from HEK293T cells transfected with SNRPB cDNA clone (Cat# RC220701) using MegaTran 2.0 (Cat# [TT210002]).