

Product datasheet for **RC220698**

MAP4K1 (NM_007181) Human Tagged ORF Clone

Product data:

Product Type:	Expression Plasmids
Product Name:	MAP4K1 (NM_007181) Human Tagged ORF Clone
Tag:	Myc-DDK
Symbol:	MAP4K1
Synonyms:	HPK1
Mammalian Cell Selection:	Neomycin
Vector:	pCMV6-Entry (PS100001)
E. coli Selection:	Kanamycin (25 ug/mL)



[View online »](#)

**ORF Nucleotide
Sequence:**

>RC220698 representing NM_007181
 Red=Cloning site Blue=ORF Green=Tags(s)

TTTTGTAATACGACTCACTATAGGGCGGCCGGAATTCGTCGACTGGATCCGGTACCGAGGAGATCTGCC
 GCC**CGGATCGCC**

ATGGACGTCGTGGACCCTGACATTTTCAATAGAGACCCCCGGGACCCTATGACCTGCTACAGCGGCTGG
 GTGGCGGCACGTATGGGGAAGTCTTTAAGGCTCGAGACAAGGTGTCAGGGGACCTGGTGGCACTGAAGAT
 GGTGAAGATGGAGCCTGATGATGATGTCTCCACCTTCAGAAGGAAATCCTCATATTGAAAACTGCCGG
 CACGCCAACATCGTGGCCTACCATGGGAGTTATCTCTGGTTGCAGAACTCTGGATCTGCATGGAATTCT
 GTGGGGCTGGTTCTCTCCAGGACATCTACCAAGTGACAGGCTCCCTGTCAGAGCTCCAGATTAGCTATGT
 CTGCCGGGAAGTCTCCAGGGACTGGCCTATTTGCACTCACAGAAGAAGATACACAGGGACATCAAGGGA
 GCTAACATCCTCATCAATGATGTGGGAGGTGAGATTGGCTGACTTTGGCATCTCGGCCAGATTGGGG
 CTACACTGGCCAGACGCCTCTTTTCATTGGGACACCCTACTGGATGGCTCCGGAAGTGGCAGCTGTGGC
 CCTGAAGGGAGGATACAATGAGCTGTGTGACATCTGGTCCCTGGGCATCACGGCCATCGAACTGGCCGAG
 CTACAGCCACCGCTCTTTGATGTGACCCCTCTCAGAGTTCTTCTCCTCATGACCAAGAGTGGCTACCAGC
 CTCCCCGACTGAAGGAAAAGGCAAATGGTCCGGTGCCTTCCACAACCTCATCAAAGTCACTCTGACTAA
 GAGTCCCAAGAAACGACCCAGCGCCACCAAGATGCTCAGTCATCAACTGGTATCCAGCCTGGGCTGAAT
 CGAGGCCGTGATCCTGGATCTTCTTGACAACTGAAGAATCCCGGGAAGGACCCTCCATTGGGGACATTG
 AGGATGAGGAGCCCGAGTACCCCTGCTATCCCTCGGCGGATCAGATCCACCCACCGCTCCAGCTCTCT
 GGGGATCCCAGATGCAGACTGCTGTGCGCGGCACATGGAGTTCAGGAAGCTCCGAGGAATGGAGACCAGA
 CCCCCAGCCAACACCGCTCGCCTACAGCCTCCTCGAGACCTCAGGAGCAGCAGCCCCAGGAAGCAACTGT
 CAGAGCTGTGACGATGACTATGACAGGTGGACATCCCCACCCCTGCAGAGGACACACCTCTCCACT
 TCCCCCAAGCCCAAGTTCCGTTCTCCATCAGACGAGGGTCCCTGGGAGCATGGGGGATGATGGGCAGCTG
 AGCCCCGGGGTGTGGTCCGGTGTGCCAGTGGGCCCCACCAAACAGCCCCCGTCTGGGCTCCCCAT
 CCACCAGCAGCCCCACCTCACCGCCATTGACAACTCACTCTGGAACCCACCCCTCCCGGAGCTTGA
 CAAGCCCCACTTCTGCCCCCAAGAAGGAAAAGATGAAGAGAAAGGGATGTGCCCTTCTCGTAAAGTTG
 TTCAATGGCTGCCCCCTCCGGATCCACAGCACGGCCGCTGGACACATCCCTCCACCAAGGACCAGCACC
 TGCTCCTGGGGCAGAGGAAGGCATCTTATCCTGAACCGGAATGACCAGGAGGCCACGCTGGAAATGCT
 CTTTCTAGCCGACTACGTGGGTGTACTCCATCAACAACGTTCTCATGTCTCTCTCAGGAAAGACCCCC
 CACCTGTATTCTCATAGCATCCTTGGCCTGCTGGAACGGAAAGAGACCAGAGCAGGAAACCCCATCGCTC
 ACATTAGCCCCACCGCCTACTGGCAAGGAAGAACATGGTTTCCACCAAGATCCAGGACACCAAAGGCTG
 CCGGGCGTGTGTGGCGGAGGGTGCAGCTCTGGGGGCCGTTCTGTGCGGTGCATTGGAGACGTCC
 GTTGTCTGCTTCAAGTGTACCAGCCATGAACAAATCCTGCTTGTCCGGCAGGTGCTGTTCCCACTGC
 CGACGCCTCTGTCCGTGTTCGCGCTGCTGACCGGGCCAGGCTCTGAGCTGCCCGCTGTGTGCATCGCGT
 GAGCCCCGGGCGGCCGGGAAGTCGGTGTCTTCCACACGGTGCCTTTGGCGCGCTCTTGTGCTGGCTG
 GCGGAGATGAGCACCGAGCACAGGGGACCCGTGCAGGTGACCCAGGTAGAGGAAGATATGGTGATGGTGT
 TGATGGATGGCTCTGTGAAGCTGGTGACCCCGGAGGGTCCCCAGTCCGGGGACTTCGCACACCTGAGT
 CCCCATGACCGAAGCGGTGGAGGCCGTGGCTATGGTTGGAGGTCAGCTTCAGGCTTCTGGAAGCATGGA
 GTGCAGGTGTGGCTCTAGGCTCGGATCAGCTGCTACAGGAGCTGAGAGACCCCTACCTCACTTTCCGTC
 TGCTTGGCTCCCCAGGCTGGAGTGCAGTGGCACGATCTCGCCTCACTGCAACCTCCTCCTCCAGGTTCC
 AAGCAATTCTCCTGCCTCAGCCTCCCGAGTAGCTGGGATTACAGGCCTG

ACGCGTACGCGGCCGCTCGAGCAGAACTCATCTCAGAAGAGGATCTGGCAGCAAATGATATCCTGGATT
 ACAAGGATGACGACGATAAGGTTTAA

Protein Sequence: >RC220698 representing NM_007181
Red=Cloning site Green=Tags(s)

MDVVDPDIFNRDPRDHYDLLQRLGGGTYGEVFKARDKVSGLVALKMKMEPDDDDVSTLQKEILILKTCR
HANIVAYHGSYLWLQKLWICMEFCGAGSLQDIYQVTGSLSELQISYVCREVLQGLAYLHSQKKIHRDIKG
ANILINDAGEVRLADFGISAQIGATLARRLSFIGTPYWMAPEVAVALKGGYNELCDIWSLGITAIELAE
LQPPFLFDVHPLRVLFMTKSGYQPPRLKEKGKWSAAFHNFIKVTLTSPKKRPSATKMLSHQLVSPGLN
RGLILDLLDKLKNPGKGPSIGDIEDEEPELPPAIPRRIRSTHRSSLGIPDADCCRRHMEFRKLRGMETR
PPANTARLQPPRDLRSSSPRKQLSESSDDYDDVDIPTAEDTPPPLPPKPKFRSPSDEGPGSMGDDGQL
SPGVLVRCASGPPNSPRPGPPPSTSSPHLTAHSEPSLWNPPSRELDKPPLLPPKKEKMKRKGCALLVKL
FNGCPLRIHSTAATHPSTKDQHLLLGAEEGIFILNRNDQEATLEMLFPSRTTWVYSINNVLMSLSGKTP
HLYSHSILGLLERKETRAGNPIAHISPHRLLARKNMVSTKIQDTKGRACCVAEGASSGGPFLCGALET
VVLLQWYQPMNKFLLVRQVLFPLPTPLSVFALLTGPGESELPVAVIGVSPGRPGKSVLFHTVRFGALSCWL
GEMSTEHRGPVQVTQVEEDMVMVLMDGSVKLVTPGSPVRGLRTPPEIPMTEAVEAVAMVGGQLQAFWKHG
VQVWALGSDQLLQELRDPTLTFRLLGSPRLECSGTISPHCNLLLPGSSNSPASASRVAGITGL

TRTRPLEQKLISEEDLAANDILDYKDDDDKV

Chromatograms: https://cdn.origene.com/chromatograms/mk8008_f06.zip

Restriction Sites: Sgfl-Mlul

Cloning Scheme:


ACCN: NM_007181

ORF Size: 2499 bp

OTI Disclaimer: The molecular sequence of this clone aligns with the gene accession number as a point of reference only. However, individual transcript sequences of the same gene can differ through naturally occurring variations (e.g. polymorphisms), each with its own valid existence. This clone is substantially in agreement with the reference, but a complete review of all prevailing variants is recommended prior to use. [More info](#)

OTI Annotation: This clone was engineered to express the complete ORF with an expression tag. Expression varies depending on the nature of the gene.

Components: The ORF clone is ion-exchange column purified and shipped in a 2D barcoded Matrix tube containing 10ug of transfection-ready, dried plasmid DNA (reconstitute with 100 ul of water).

Reconstitution Method:

1. Centrifuge at 5,000xg for 5min.
2. Carefully open the tube and add 100ul of sterile water to dissolve the DNA.
3. Close the tube and incubate for 10 minutes at room temperature.
4. Briefly vortex the tube and then do a quick spin (less than 5000xg) to concentrate the liquid at the bottom.
5. Store the suspended plasmid at -20°C. The DNA is stable for at least one year from date of shipping when stored at -20°C.

RefSeq: [NM_007181.6](#)

RefSeq Size: 2732 bp

RefSeq ORF: 2502 bp

Locus ID: 11184

UniProt ID: [Q92918](#)

Cytogenetics: 19q13.2

Domains: pkinase, CNH, TyrKc, S_TKc

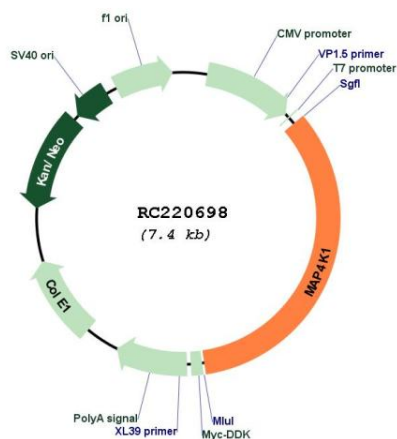
Protein Families: Druggable Genome, Protein Kinase

Protein Pathways: MAPK signaling pathway

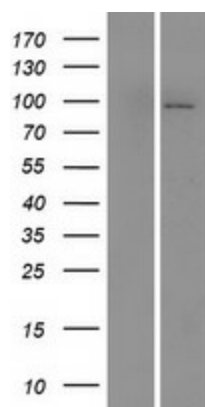
MW: 91.1 kDa

Gene Summary: Serine/threonine-protein kinase, which may play a role in the response to environmental stress. Appears to act upstream of the JUN N-terminal pathway. May play a role in hematopoietic lineage decisions and growth regulation. Able to autophosphorylate. [UniProtKB/Swiss-Prot Function]

Product images:



Circular map for RC220698



Western blot validation of overexpression lysate (Cat# [LY416142]) using anti-DDK antibody (Cat# [TA50011-100]). Left: Cell lysates from untransfected HEK293T cells; Right: Cell lysates from HEK293T cells transfected with RC220698 using transfection reagent MegaTran 2.0 (Cat# [TT210002]).