

ACTTTCATGGAGTATTTCTCTTTGGAAAAATATTCAAAGAGCTTCTAGTTATGAAGATTTCTTAGATG
 CTCGATTTAAACCATGAAGAAAGATTCCTTAAATTCATCTCATCCAATATCATCATCTGTTTCAGCTTTC
 AGAACAAATTGAAGAAATGTTTGATTCTCTTCTATTTAAAGGGATCTTCTCTTGTGATGTTGAAA
 ACTTACCTTAGTGAAGATGTGTTTCAACATGCTGTTGCTCTTACCTGCATAATCACAGCTATGCATCTA
 TTCAAAGTGATGATCTGTGGGATAGTTTTAATGAGGTCAAAACCAAACTAGATGTAAGAGAATGAT
 GAAAACCTGGACCCTGCAGAAAGGATTTCTTTAGTGACTGTTCAAAAAGAAAGAAAGAACTTTTATA
 CAACAAGAGAGATTCTTTTAAATATGAAGCCTGAAATTCAGCCTCAGATAACAAGCTACCTGTGGCATA
 TTCCACTATCCTATGTCCTGAAGGAAGAAATTATCAAAATATCAATCGGTATCATTACTGGATAAGAA
 ATCAGGTGTCATCAATCTTACAGAAGAAGTGTGTGGGTCAAAGTGAATATAAACATGAATGTTATTAT
 ATTGTACACTATGCAGATGATGATTGGGAAGCACTAATCCATCAGTTGAAAATAAATCCTTATGTTCTGA
 GTGACAAAGACCGAGCCAACCTTATCAACAACATCTTTGAACTTCGAGGCCTAGGCAAGGTACCTCTCAA
 GAGGGCCTTTGATTTGATTAATTATCTTGGAAATGAGAACCATACTGCACCCATCACCGAAGCCCTGTTT
 CAGACAGACCTCATCTATAACCTCCTTAAAACTGGGATACATGGATCTGGCCTCAAGACTGGTGACTA
 GGGTATTTAAATTACTTCAAAACCAATCAACAACAACTTGGACTGATGAGGGCACTCCATCTATGCG
 AGAGCTTCGGTCAGCCCTGCTAGAGTTTGCTTGCACCCACAACCTGGGGAAGTCTCTACTACTGCCATG
 AAAGTGTGATGACTGGATGGATCCAATGGAAGTCAAAGCCTACCTACTGATGTCATGACAAGTGTGT
 TCAAAGTTGGAGCAAAAAGTGCAGAAAGGCTGGTCAATCCTTTTGGGCAAAATACATTTCTATAGGCTCTGA
 AGCAGAGAAGAACAAAATACTAGAAGCACTTGCCAGCTCAGAGGATGTGCGGAAGCTTTACTGGTTAATG
 AAAAGTAGCCTGAATGGAGATAACTCCGAACACAGAAGCTGTCTTTTATCATTAGAAGTGGGTGCGAC
 ATTTTCTGGACACTTACTGGCATGGGATTTTGTCAAAGAGAAGTGAATAAGCTGTACAGAAGTTCCC
 TCTGGGCTCTATACCATACAAAATATTGTTGCTGGATCAACTTACCTGTTTTCAACAAAGACACATTTA
 TCTGAGGTTGAGGATTTCTTAAAAATCAGTCAGAGGCAACCTTCGGCTTCGTTGTGTCAGGAGGCTT
 TGGAAATCATTGAGTTGAATATCCAGTGGATGGAGAAGCACTCAAAGTCTCACATGGTGGCTG

ACGCGTACGCGGCCGCTCGAGCAGAACTCATCTCAGAAGAGGATCTGGCAGCAATGATATCCTGGATT
 ACAAGGATGACGACGATAAGGTTTAA

Protein Sequence:

>RC220692 representing NM_005575
 Red=Cloning site Green=Tags(s)

MEPFTNDRLQLPRNMIENSMFEEEDPVVDLAKEPCLHPLEPDEVEYEPGRSRLVRLGHEHEMEDEEDY
 ESSAKLLGMSFMNRSSGLRNSATGYRQSPDGACSVPSARTMVVCAAFVIVVAVSVIMVIYLLPRCTFKEG
 CHKKNQSIGLIQPFATNGKLPWAQIRLPTAVVPLRYELSLHPNLTSMTFRGSVTISVQALQVTWNIILH
 STGHNISRVTFMSAVSSQEKQAEILEYAYHGQIAIVAPEALLAGHNYTLKIEYSANISSYYGFYGSYT
 DESNEKKYFAATQFEPLAARSAFPCFDEPAFKATFIKIIRDEQYALSNMPKSSVLLDDGLVQDEFSE
 SVKMSTYLVAFIVGEMKNLSQDVNGTLVSIYAVPEKIGQVHYALETTVKLEFFQNYFEIQYPLKKLDLV
 AIPDFEAGAMENWGLLTFREETLLYDSNTSSMADRKLVTKIIAHELHQWFGNLVTMKWVNDLWLNAGFA
 TFMEYFSLEKIFKELSSYEDFLDARFKTMKDSLNSHPISSSVQSSEQIEEMFDSL SYFKGSSLLMLK
 TYLSEDFVQHAVVLYLHNHSYASIQSDDLWDSFNEVTNQTL DVKRMKWTWLQKGFPLVTVQKKGKELFI
 QQERFFLNMPKPEIQPSDTSYLWHIPLSYVTEGRNYSKYQSVSLLDKKSGVINL TEEVLWVKVINMNGYY
 IVHYADDWEALIHQLKINPYVLSKDRLANINNIFELAGLGKVPKRAFIDLINYLGNENHTAPITEALF
 QTDLIYNLLEKLYMDLASRLVTRVFKLLQNQIQQTWTDEGTPSMRELSALLEFACTHNLGNCSTTAM
 KLFDDWMASNGTQSLPTDVMTTVFKVGAKTDKGWSFLLGKYISIGSEAEKNKILEALASSEDVRLYWLM
 KSSLNGDNFRITQKLSFIIRTVGRHFGHLLAWDFVKENWNKLVQKFPPLGSIYTIQNIIVAGSTYLFSTKTHL
 SEVQAFENQSEATFRLRCVQEALQNIQWMEKNLKSLTWL

TRTRPLEQKLISEEDLAANDILDYKDDDDKV

Chromatograms:

https://cdn.origene.com/chromatograms/mk6168_h09.zip

Restriction Sites:

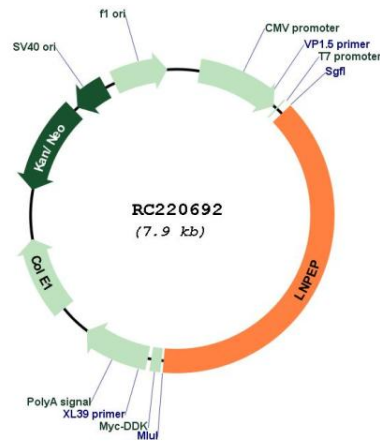
Sgfl-Mlul

UniProt ID: [Q9UIQ6](#)
Cytogenetics: 5q15
Domains: Peptidase_M1
Protein Families: Druggable Genome, Protease, Secreted Protein, Transmembrane
Protein Pathways: Renin-angiotensin system

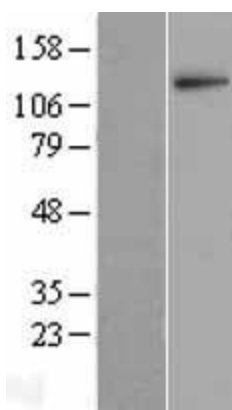
MW: 117.2 kDa

Gene Summary: This gene encodes a zinc-dependent aminopeptidase that cleaves vasopressin, oxytocin, lys-bradykinin, met-enkephalin, dynorphin A and other peptide hormones. The protein can be secreted in maternal serum, reside in intracellular vesicles with the insulin-responsive glucose transporter GLUT4, or form a type II integral membrane glycoprotein. The protein catalyzes the final step in the conversion of angiotensinogen to angiotensin IV (AT4) and is also a receptor for AT4. Alternative splicing results in multiple transcript variants encoding different isoforms. [provided by RefSeq, Jul 2008]

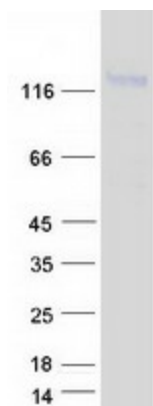
Product images:



Circular map for RC220692



Western blot validation of overexpression lysate (Cat# [LY401710]) using anti-DDK antibody (Cat# [TA50011-100]). Left: Cell lysates from untransfected HEK293T cells; Right: Cell lysates from HEK293T cells transfected with RC220692 using transfection reagent MegaTran 2.0 (Cat# [TT210002]).



Coomassie blue staining of purified LNPEP protein (Cat# [TP320692]). The protein was produced from HEK293T cells transfected with LNPEP cDNA clone (Cat# RC220692) using MegaTran 2.0 (Cat# [TT210002]).