

Product datasheet for **RC220685**

H2AC21 (NM_175065) Human Tagged ORF Clone

Product data:

Product Type: Expression Plasmids
Product Name: H2AC21 (NM_175065) Human Tagged ORF Clone
Tag: Myc-DDK
Symbol: H2AC21
Synonyms: H2AB; HIST2H2AB
Mammalian Cell Selection: Neomycin
Vector: pCMV6-Entry (PS100001)
E. coli Selection: Kanamycin (25 ug/mL)
ORF Nucleotide Sequence: >RC220685 representing NM_175065
Red=Cloning site Blue=ORF Green=Tags(s)

TTTTGTAATACGACTCACTATAGGGCGCCGGGAATTCGTCGACTGGATCCGGTACCGAGGAGATCTGCC
GCC**CGATCGCC**

ATGTCAGGACGCGAAAGCAGGGAGGCAAGGCCCGCTAAGGCCAAGTCGCGCTCGTCCCAGCTGGTCTCCAGTCCCGGTGGGGCGAGTGCACCGCTTGTGCGCAAAGGCAACTACGCGGAGCGGGTCGGGGCAGGCGCCCCGTGTACCTGGCGCGGTCCTCGAGTACCTGACCGCGGAAATTCGGAGCTGGCGGCAACGCGCTCGGGACAACAAGAAGACGCGCATCATCCCTCGCCATCTGCAACTAGCCGTGAGGAATGACGAAGAGCTCAACAAGTTACTCGGGGTGTACCATTGCCAGGGCGGCGTCTGCCAATATCCAGGCTGTCCTGTTGCCAAGAAAACGAGAGTCACAAGCCTGGCAAGAACAAG

ACGCGTACGCGGCCGCTCGAGCAGAACTCATCTCAGAAGAGGATCTGGCAGCAAATGATATCCTGGATTACAAGGATGACGACGATAAGGTTTAA

Protein Sequence: >RC220685 representing NM_175065
Red=Cloning site Green=Tags(s)

MSGRGKQGGKARAKAKSRSSRAGLQFPVGRVHRLLRKGNYAERVGAGAPVYLAAVLEYLTAEILELAGNARDNKKTRIIPRHLQLAVRNDEELNKLGGVTIAQGGVLPNIQAVLLPKKTESHKPGKNK

TRTRPLEQKLISEEDLAANDILDYKDDDDKV

Chromatograms: https://cdn.origene.com/chromatograms/mk8042_b10.zip

Restriction Sites: SgfI-MluI



[View online »](#)

Cloning Scheme:


ACCN: NM_175065

ORF Size: 390 bp

OTI Disclaimer: The molecular sequence of this clone aligns with the gene accession number as a point of reference only. However, individual transcript sequences of the same gene can differ through naturally occurring variations (e.g. polymorphisms), each with its own valid existence. This clone is substantially in agreement with the reference, but a complete review of all prevailing variants is recommended prior to use. [More info](#)

OTI Annotation: This clone was engineered to express the complete ORF with an expression tag. Expression varies depending on the nature of the gene.

Components: The ORF clone is ion-exchange column purified and shipped in a 2D barcoded Matrix tube containing 10ug of transfection-ready, dried plasmid DNA (reconstitute with 100 ul of water).

- Reconstitution Method:**
1. Centrifuge at 5,000xg for 5min.
 2. Carefully open the tube and add 100ul of sterile water to dissolve the DNA.
 3. Close the tube and incubate for 10 minutes at room temperature.
 4. Briefly vortex the tube and then do a quick spin (less than 5000xg) to concentrate the liquid at the bottom.
 5. Store the suspended plasmid at -20°C. The DNA is stable for at least one year from date of shipping when stored at -20°C.

RefSeq: [NM_175065.3](#)

RefSeq Size: 448 bp

RefSeq ORF: 393 bp

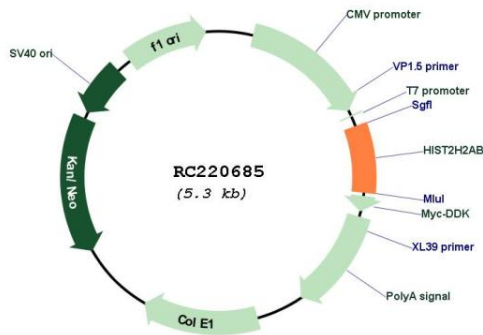
Locus ID: 317772

UniProt ID: [Q8IUE6](#)

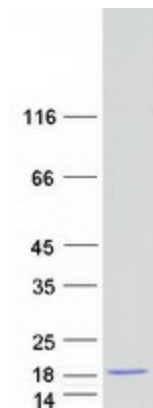
Cytogenetics: 1q21.2
Protein Pathways: Systemic lupus erythematosus
MW: 13.8 kDa

Gene Summary: Histones are basic nuclear proteins that are responsible for the nucleosome structure of the chromosomal fiber in eukaryotes. Nucleosomes consist of approximately 146 bp of DNA wrapped around a histone octamer composed of pairs of each of the four core histones (H2A, H2B, H3, and H4). The chromatin fiber is further compacted through the interaction of a linker histone, H1, with the DNA between the nucleosomes to form higher order chromatin structures. This gene is intronless and encodes a replication-dependent histone that is a member of the histone H2A family. Transcripts from this gene contain a palindromic termination element. [provided by RefSeq, Aug 2015]

Product images:



Circular map for RC220685



Coomassie blue staining of purified HIST2H2AB protein (Cat# [TP320685]). The protein was produced from HEK293T cells transfected with HIST2H2AB cDNA clone (Cat# RC220685) using MegaTran 2.0 (Cat# [TT210002]).