

Product datasheet for **RC220684**

Nucleobindin 2 (NUCB2) (NM_005013) Human Tagged ORF Clone

Product data:

Product Type:	Expression Plasmids
Product Name:	Nucleobindin 2 (NUCB2) (NM_005013) Human Tagged ORF Clone
Tag:	Myc-DDK
Symbol:	Nucleobindin 2
Synonyms:	HEL-S-109; NEFA
Mammalian Cell Selection:	Neomycin
Vector:	pCMV6-Entry (PS100001)
E. coli Selection:	Kanamycin (25 ug/mL)
ORF Nucleotide Sequence:	>RC220684 representing NM_005013 Red=Cloning site Blue=ORF Green=Tags(s)

TTTTGTAATACGACTCACTATAGGGCGGCCGGAATTCGTCGACTGGATCCGGTACCGAGGAGATCTGCC
GCC**CGATCGCC**

ATGAGGTGGAGGACCATCCTGCTACAGTATTGCTTTCTTTGATTACATGTTTACTTACTGCTCTTGAAG
CTGTGCCTATTGACATAGACAAGACAAAAGTACAAAATATTCACCCTGTGGAAAGTGCAGGATAGAACC
ACCAGATACTGGACTTTATTATGATGAATATCTCAAGCAAGTATTGATGTGCTGGAAACAGATAAACAC
TTCAGAGAAAAGCTCCAGAAAAGCAGACATAGAGGAAAATAAAGAGTGGGAGGCTAAGCAAAGAACTGGATT
TAGTAAGTCACCATGTGAGGACAAAACCTTATGAACTGAAAAGGCAAGAAGTAGGAAGTTAAGAATGTT
AATTAAGCTAAGTTGGATTCCCTTCAAGATATAGGCATGGACCACCAAGCTCTTCTAAAACAATTTGAT
CACCTAAACCACCTGAATCCTGACAAGTTTGAATCCACAGATTTAGATATGCTAATCAAAGCGGCAACAA
GTGATCTGGAACACTATGACAAGACTCGTCATGAAGAATTTAAAAATATGAAATGATGAAGGAACATGA
AAGGAGAGAATATTTAAAAACATTGAATGAAGAAAAGAGAAAAGAAGAAGAGTCTAAATTTGAAGAAATG
AAGAAAAGCATGAAAATCACCTAAAGTTAATCACCCAGGAAGCAAAGATCAACTAAAAGAGGTATGGG
AAGAGACTGATGGATTGGATCCTAATGACTTTGACCCCAAGACATTTTCAAATTACATGATGTCAATAG
TGATGGATTCCTGGATGAACAAGAATTAGAAGCCCTATTTACTAAAGAGTTGGAGAAAGTATATGACCCT
AAAAATGAAGAGGATGATATGGTAGAAATGGAAGAAGAAAGGCTTAGAATGAGGGAACATGTAATGAATG
AGGTTGATACTAACAAGACAGATTGGTGACTCTGGAGGAGTTTTTGAAGCCACAGAAAAAAAAGAAAT
CTTGGAGCCAGATAGCTGGGAGACATTAGATCAGCAACAGTTCTTACAGAGGAAGAAGCTAAAAGAAAT
GAAAATATTATTGCTTTACAAGAAAATGAACCTTAAAGAAGAGCAGATGAGCTTTCAGAAACAAAAGAAAG
AGCTACAACGTCAGCATGATCAACTGGAGGCTCAGAAGCTGGAATATCATCAGGTACATACAGCAGATGGA
ACAAAAAAAATTACAACAAGGAATTCCTCCATCAGGGCCAGCTGGAGAATTGAAGTTTGAGCCACACATT

ACGCGTACGCGGCCGCTCGAGCAGAAACTCATCTCAGAAGAGGATCTGGCAGCAAATGATATCTGGATT
ACAAGGATGACGACGATAAGGTTTAA



[View online »](#)

Protein Sequence: >RC220684 representing NM_005013
 Red=Cloning site Green=Tags(s)

MRWRTILLQYCFLLITCLLTALEAVPIDIDKTKVQNIHPVESAKIEPDTGLYYDEYLKQVIDVLETDKH
 FREKLQKADIEEIKSGRLSKELDLVSHHVRTKLDLKRQEVGRLRMLIKAKLDSLQDIGMDHALLKQFD
 HLNHLNPKDFESTDLMLIKAATSDLEHYDKTRHEEFKKYEMMKEHERREYLKTLNEEKRKEEESKFEEM
 KKKHENHPKVNHPGSKDQLKEVWEETDGLDPNDFPKTFFKLHDVNSDGFLEQLEALFTKELEKYYDP
 KNEEDDMVEEEEERLRMREHVMNEVDTNKDRLVTLLEFLKATEKKEFLEPDSWETLDQQQFFTEELKEY
 ENIIALQENELKKKADELQKQKEELQRQHDQLEAQKLEYHQVIQQMEQKKLQQGIPPSGPAGELKFEPHI

TRTRPLEQKLISEEDLAANDILDYKDDDDKV

Restriction Sites:

SgfI-MluI

Cloning Scheme:

Cloning sites used for ORF Shuttling:



* The last codon before the Stop codon of the ORF

ACCN: NM_005013

ORF Size: 1260 bp

OTI Disclaimer: Due to the inherent nature of this plasmid, standard methods to replicate additional amounts of DNA in E. coli are highly likely to result in mutations and/or rearrangements. Therefore, OriGene does not guarantee the capability to replicate this plasmid DNA. Additional amounts of DNA can be purchased from OriGene with batch-specific, full-sequence verification at a reduced cost. Please contact our customer care team at custsupport@origene.com or by calling 301.340.3188 option 3 for pricing and delivery.

The molecular sequence of this clone aligns with the gene accession number as a point of reference only. However, individual transcript sequences of the same gene can differ through naturally occurring variations (e.g. polymorphisms), each with its own valid existence. This clone is substantially in agreement with the reference, but a complete review of all prevailing variants is recommended prior to use. [More info](#)

OTI Annotation: This clone was engineered to express the complete ORF with an expression tag. Expression varies depending on the nature of the gene.

Components: The ORF clone is ion-exchange column purified and shipped in a 2D barcoded Matrix tube containing 10ug of transfection-ready, dried plasmid DNA (reconstitute with 100 ul of water).

Reconstitution Method:

1. Centrifuge at 5,000xg for 5min.
2. Carefully open the tube and add 100ul of sterile water to dissolve the DNA.
3. Close the tube and incubate for 10 minutes at room temperature.
4. Briefly vortex the tube and then do a quick spin (less than 5000xg) to concentrate the liquid at the bottom.
5. Store the suspended plasmid at -20°C. The DNA is stable for at least one year from date of shipping when stored at -20°C.

RefSeq: [NM_005013.4](#)

RefSeq Size: 1612 bp

RefSeq ORF: 1263 bp

Locus ID: 4925

UniProt ID: [P80303](#)

Cytogenetics: 11p15.1

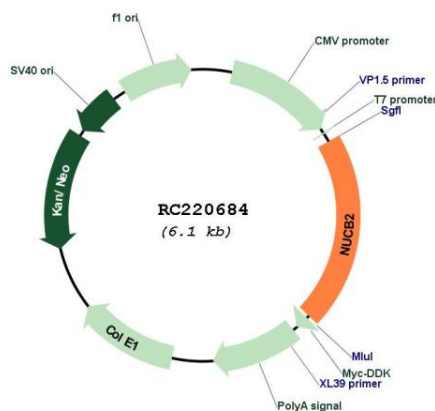
Domains: EFh

Protein Families: Secreted Protein, Transmembrane

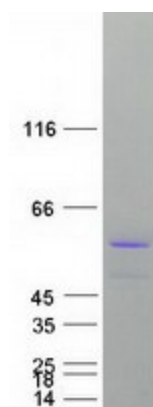
MW: 50.7 kDa

Gene Summary: This gene encodes a protein with a suggested role in calcium level maintenance, eating regulation in the hypothalamus, and release of tumor necrosis factor from vascular endothelial cells. This protein binds calcium and has EF-folding domains. [provided by RefSeq, Oct 2011]

Product images:



Circular map for RC220684



Coomassie blue staining of purified NUCB2 protein (Cat# [TP320684]). The protein was produced from HEK293T cells transfected with NUCB2 cDNA clone (Cat# RC220684) using MegaTran 2.0 (Cat# [TT210002]).