

Product datasheet for **RC220675**

LYPD1 (NM_001077427) Human Tagged ORF Clone

Product data:

Product Type: Expression Plasmids
Product Name: LYPD1 (NM_001077427) Human Tagged ORF Clone
Tag: Myc-DDK
Symbol: LYPD1
Synonyms: LYPDC1; PHTS
Mammalian Cell Selection: Neomycin
Vector: pCMV6-Entry (PS100001)
E. coli Selection: Kanamycin (25 ug/mL)
ORF Nucleotide Sequence: >RC220675 representing NM_001077427
Red=Cloning site Blue=ORF Green=Tags(s)

TTTTGTAATACGACTCACTATAGGGCGGCCGGAATTCGTCGACTGGATCCGGTACCGAGGAGATCTGCC
GCC**CGGATCGCC**

ATGTGTCAGAAAGAAGTATGGAGCAAAGTGCCGGATCATGTACCGCAAGTCTGTGCATCATCAGCGG
CCTGTCTCATCGCCTCTGCCGGTACCAGTCTTCTGCTCCCCAGGAACTGAAGTTCAGTTTGCATCAG
CTGCTGCAACACCCCTCTTTGTAACGGCCAAGGCCAAGAAAAGGGGAAGTTCTGCCTCGGCCCTCAGG
CCAGGGCTCCGACCACCATCTGTTCTCAAATTAGCCCTCTTCTCGGCACACTGC

ACGCGTACGCGGCCGCTCGAGCAGAACTCATCTCAGAAGAGGATCTGGCAGCAAATGATATCCTGGATT
ACAAGGATGACGACGATAAGGTTTAA

Protein Sequence: >RC220675 representing NM_001077427
Red=Cloning site Green=Tags(s)
MCQKEVMEQSAGIMYRKSCASSAACLIASAGYQSFCSPGKLNVCISCCNTPLCNGPRPKKRGSSASALR
PGLRRTTILFLKLALFSAHC

TRTRPLEQKLISEEDLAANDILDYKDDDDKV

Chromatograms: https://cdn.origene.com/chromatograms/mk6498_d01.zip

Restriction Sites: Sgfl-MluI



[View online »](#)

Cloning Scheme:


ACCN: NM_001077427

ORF Size: 267 bp

OTI Disclaimer: The molecular sequence of this clone aligns with the gene accession number as a point of reference only. However, individual transcript sequences of the same gene can differ through naturally occurring variations (e.g. polymorphisms), each with its own valid existence. This clone is substantially in agreement with the reference, but a complete review of all prevailing variants is recommended prior to use. [More info](#)

OTI Annotation: This clone was engineered to express the complete ORF with an expression tag. Expression varies depending on the nature of the gene.

Components: The ORF clone is ion-exchange column purified and shipped in a 2D barcoded Matrix tube containing 10ug of transfection-ready, dried plasmid DNA (reconstitute with 100 ul of water).

Reconstitution Method:

1. Centrifuge at 5,000xg for 5min.
2. Carefully open the tube and add 100ul of sterile water to dissolve the DNA.
3. Close the tube and incubate for 10 minutes at room temperature.
4. Briefly vortex the tube and then do a quick spin (less than 5000xg) to concentrate the liquid at the bottom.
5. Store the suspended plasmid at -20°C. The DNA is stable for at least one year from date of shipping when stored at -20°C.

RefSeq: [NM_001077427.4](#)

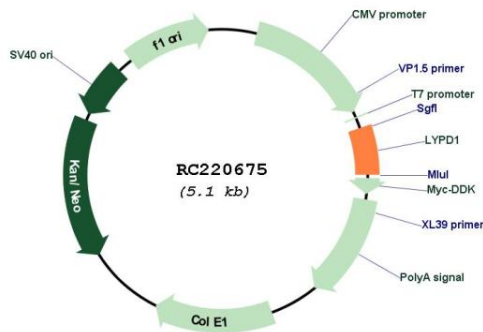
RefSeq Size: 1814 bp

RefSeq ORF: 270 bp

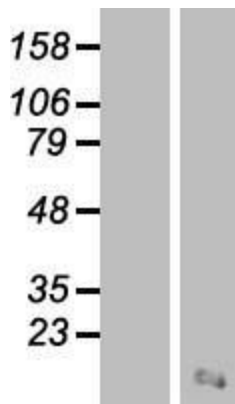
Locus ID: 116372

UniProt ID: [Q8N2G4](#)
Cytogenetics: 2q21.2
Protein Families: Druggable Genome, Transmembrane
MW: 9.2 kDa
Gene Summary: Believed to act as a modulator of nicotinic acetylcholine receptors (nAChRs) activity. In vitro increases receptor desensitization and decreases affinity for ACh of alpha-4:beta-2-containing nAChRs. May play a role in the intracellular trafficking of alpha-4:beta-2 and alpha-7-containing nAChRs and may inhibit their expression at the cell surface. May be involved in the control of anxiety.[UniProtKB/Swiss-Prot Function]

Product images:



Circular map for RC220675



Western blot validation of overexpression lysate (Cat# [LY421416]) using anti-DDK antibody (Cat# [TA50011-100]). Left: Cell lysates from untransfected HEK293T cells; Right: Cell lysates from HEK293T cells transfected with RC220675 using transfection reagent MegaTran 2.0 (Cat# [TT210002]).