

Product datasheet for **RC220672**

INPP5F (OCRL) (NM_000276) Human Tagged ORF Clone

Product data:

Product Type:	Expression Plasmids
Product Name:	INPP5F (OCRL) (NM_000276) Human Tagged ORF Clone
Tag:	Myc-DDK
Symbol:	INPP5F
Synonyms:	Dent-2; DENT2; INPP5F; LOCR; NPHL2; OCRL-1; OCRL1
Mammalian Cell Selection:	Neomycin
Vector:	pCMV6-Entry (PS100001)
E. coli Selection:	Kanamycin (25 ug/mL)



[View online »](#)

ORF Nucleotide Sequence:

>RC220672 representing NM_000276
 Red=Cloning site Blue=ORF Green=Tags(s)

TTTTGTAATACGACTCACTATAGGGCGGCCGGAATTCGTCGACTGGATCCGGTACCGAGGAGATCTGCC
 GCC**CGCATCGCC**

ATGGAGCCGCGCTCCCGTTCGGAGCCAGCCGCTTGCCACTGTCGAGGGTATGGAGATGAAGGGTCTCT
 TCCGGGAGCCCTGCGCCCTGACCCTAGCCAGAGGAACGGGAATATGAGTTAATAATCCAGTTGCATGA
 GAAGGAACAGCATGTTCAAGATATCATTCTATAAATAGCCACTTCAGATGTGTTCAAGAAGCAGAAGAA
 ACTCTTTTGATTGACATAGCTTCTAACAGTGGCTGCAAAATTCGGGTTCCAGGGGACTGGATCAGAGAGC
 GCCGCTTTGAAATCCCTGATGAGGAACACTGTTTGAAGTTCCTCTCAGCTGTCCTTGCTGCTCAGAAAGC
 TCAGTCACAGCTTCTTGTCCAGAGCAAAGGACTCATCTAGCTGGTACCAGAAATTAGACACTAAGGAC
 AAACCTTCTGTTTTTTCAGGGCTTCTTGGATTTGAAGACAATTTTTCTTCTATGAATTTGGACAAGAAAA
 TAAATTCAAAAATCAGCCTACTGGGATTCATCGGGAACCCACCTCCACCCTTTTCAGTGAATAAAAT
 GCTTCCACGTGAAAAAGAAGCTTCTAACAGGAGCAGCCAAAGTGACCAACACCATGCGGAAGCTCTTT
 GTACCAAATACCCAATCTGGGCAGCGGGAGGGTCTCATCAAACATATCCTGGCAAAGCGAGAGAAAGAA
 ATGTCAACATTAGACTTTCAGATTTTTGTTGGAACCTTGAATGTGAATGGCCAGTCTCCAGATAGCGG
 GTTAGAACCTTGCTGAACTGTGATCCCAATCCTCTGATATCTACTGCATTGGATTCCAAGAACTGGAC
 TTGAGCACAGAAGCCTTCTTCTACTTTGAACTGTGAAGGAACAAGAATGGTCCATGGCTGTAGAGAGAG
 GTTTGCATTCAAAGCCAAGTATAAGAAAGTCAACTGGTGCCTTGTGGGATGATGCTTCTTATATT
 TGCCAGAAAGGATCAGTGTGCATACATTCGTGATATTGCTACAGAAACAGTTGGAACCTGGAATCATGGGG
 AAAATGGGAAACAAGGTGGGGTAGCTGTGAGATTTGATTTACAACACCACCTTTTGCATTGTCAATT
 CCCATCTGGCTGCACACGTGGAGACTTTGAGAGAAGGAATCAAGATTATAAGGACATTTGTGCGAGAAT
 GAGTTTTGTGGTCCCAAATCAGACCCTCCCGCAGTTGAACATCATGAAACATGAGGTTGTCATTTGGTTG
 GGAGATTTGAATTATAGACTTTGCATGCCTGATGCCAATGAGGTGAAAAGTCTTATTAATAAGAAAGACC
 TTCAGAGACTCTTGAAATTCGACCAGCTAAATATTCAGCGCACACAGAAAAAGCTTTTGTGACTTCAA
 TGAAGGGGAAATCAAGTTCATCCCACTTATAAGTATGACTCTAAAACAGACCGGTGGGATTCCAGTGGG
 AAATGCCGGTTCACGCCTGGTGTGACCGAATCTTTGGAGAGGAACAAATGTTAATCAGCTTAATTATC
 GGAGTCACATGGAACGAAAACAGCGACCACAAGCCTGTAGCGCCTCTTCCATATTGGGGTGAAGGT
 TGTGGATGAACGAAGGTACCGAAAGTCTTTGAAGATAGTGTACGCATCATGGACAGAATGAAAAATGAC
 TTCCTTCTTCTTAGAACTCAGCAGGAGGGATTTGTGTTGAAAATGTGAAGTTTCGGCAACTACAAA
 AGGAGAAGTTCAGATCAGCAACAATGGACAGGTTCCCTGCCATTTTTCTTTCATCCCTAAACTTAATGA
 CAGCCAGTACTGCAAGCCATGGCTTCGGGCTGAACCTTTTGAGGGCTACTTGGAGCCAAATGAGACAGTG
 GACATTTCTTGTATGTATGTGAGCAAGACTCTGTAACCATCCTGAACTCGGGAGAAGATAAGATTG
 AAGATATTCCTGCTTTCACCTGGATCGAGGCAAGATTACTTCTTGACTATCAGTGGAAATTACCTCCC
 AAGTTGTTTTGGCACATCCTTAGAGGCTCTGTGCCGATGAAAAGACCAATCCGAGAAGTTCCTGTTACC
 AAATCATAGACTTGAAGAAGACAGCTTCTAGAAAAGGAGAAATCCCTTCTGCAAATGGTTCCTTTGG
 ATGAAGGTGCCAGTGAGAGACCCCTTCAGTTCCCAAGGAGATCTGGCTTCTAGTAGATCACCTATTCAA
 ATACGCTGTACCAGGAGGACCTGTTCCAGACCCTGGAATGCAGGAAGAGCTCCAGCAGATCATTGAT
 TGTCTGGATACCAGCATTCTGAGACAATCCCTGGCAGCAACCACTCTGTGGCTGAAGCACTGCTCATT
 TCTTGAAGCCCTGCCAGAGCCAGTCTATCTGTTACGAGCTGTATCAGCGATGCTTACTGCTGCTTATGA
 TCCCCGGATCTGCCGACAGGTGATCTCCAGCTTCCGAGATGCCATAGAAATGTTTTCCGTTACTTGATG
 GCATTCCTTCGAGAACTCTAAAATCTCTGAATACAATAGCGTCAATGCCAACATGATCGCTACTCTCT
 TCACTAGTCTTCTCTGAGGCTCCACCAACCTTATGGCAAGACAGACTCCAAGTGACCGCCAGCGTGC
 TATTCAGTTCCTTCTGGGCTTTCTGCTTGGGAGCGAAGAAGAC

ACGCGTACGCGGCCGCTCGAGCAGAAACTCATCTCAGAAGAGGATCTGGCAGCAAATGATATCCTGGATT
 ACAAGGATGACGACGATAAGGTTTAA

Protein Sequence: >RC220672 representing NM_000276
 Red=Cloning site Green=Tags(s)

```
MEPPLVGAQPLATVEGMEMKGPLREPCALTLAQRNGQYELIIQLHEKEQHVQDIIPINSHFRCVQEAAE
TLLIDIASNSGCKIRVQGDWIRERRFEIPDEEHCLKFLSAVLAQAQSQLLVPEQKSSSWYQKLDTKD
KPSVFSGLLGFEDNFSSMNLDDKINSQNPQGTGIHREPPPPPFVSNKMLPREKEASNKEQPKVTNTMRKLF
VPNTQSGQREGLIKHILAKREKEYVNIQTFRRFFVGTWNVNGQSPDSGLEPWLNCDPNPPDIYICIGFQELD
LSTEAFFYFESVKEQEWMAVERGLHSAKYKKVQLVRLVGMMLLIFARKDQCRYIRDIATETVGTGIMG
KMGNGGGVAVRFVFHNTTFCIVNSHLAAHVEDFERRNQDYKDICARMSFVVPNQTLPLNIMKHEVVIWL
GDLNYRLCMPDANEVKSLLINKKDLQRLKFDQLNIQRTQKAFVDFNEGEIKFIPTYKYDSKTRWDSSG
KCRVPAWCDRILWRGTNVNQLNYRSHMELKTSDHKPVSALEFHIGVKVVDERRRYRKYVFEDSVRIMDRMEND
FLPSLELSRREFVFENVKFRQLQKEKQFQISNNGQVPCFHSFIPKLNDSQYCKPWLRAEPFEGYLEPNETV
DISLDVYVSKDSVTILNSGEDKIEDILVLHLDRGKDYFLTISGNYPSCFGTSLEALCRMKRIREVPT
KLIDLEEDSFLEKEKSLQMVPLDEGASERPLQVPKEIWLVDHLFKYACHQEDLFQTPGMQEELQQIID
CLDTSIPETIPGSNHSVAEALLIFLEALPEPVICYELYQRCLDSAYDPRICRQVISQLPCHRNVFRYLM
AFLRELLKFSEYNSVNMIAITLFTSLLLPPNLMARQTPSDRQRAIQFLLGFLLGSEED
```

TRTRPLEQKLISEEDLAANDILDYKDDDDKV

Chromatograms: https://cdn.origene.com/chromatograms/mk6162_h04.zip

Restriction Sites: SgfI-MluI

Cloning Scheme:

Cloning sites used for ORF Shuttling:

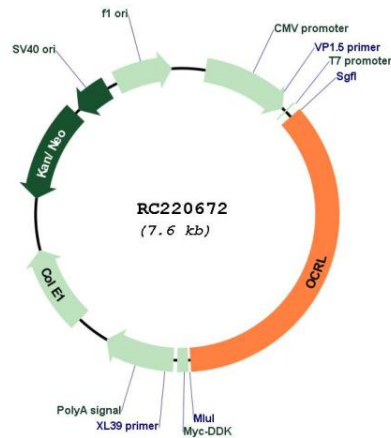


* The last codon before the Stop codon of the ORF

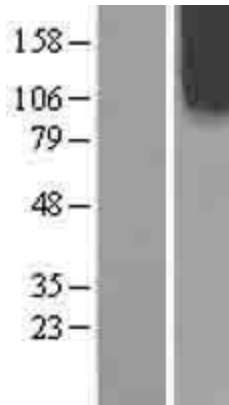
ACCN: NM_000276

ORF Size:	2703 bp
OTI Disclaimer:	The molecular sequence of this clone aligns with the gene accession number as a point of reference only. However, individual transcript sequences of the same gene can differ through naturally occurring variations (e.g. polymorphisms), each with its own valid existence. This clone is substantially in agreement with the reference, but a complete review of all prevailing variants is recommended prior to use. More info
OTI Annotation:	This clone was engineered to express the complete ORF with an expression tag. Expression varies depending on the nature of the gene.
Components:	The ORF clone is ion-exchange column purified and shipped in a 2D barcoded Matrix tube containing 10ug of transfection-ready, dried plasmid DNA (reconstitute with 100 ul of water).
Reconstitution Method:	<ol style="list-style-type: none">1. Centrifuge at 5,000xg for 5min.2. Carefully open the tube and add 100ul of sterile water to dissolve the DNA.3. Close the tube and incubate for 10 minutes at room temperature.4. Briefly vortex the tube and then do a quick spin (less than 5000xg) to concentrate the liquid at the bottom.5. Store the suspended plasmid at -20°C. The DNA is stable for at least one year from date of shipping when stored at -20°C.
RefSeq:	NM_000276.4
RefSeq Size:	5165 bp
RefSeq ORF:	2706 bp
Locus ID:	4952
UniProt ID:	Q01968
Cytogenetics:	Xq26.1
Domains:	RhoGAP, IPPc, Exo_endo_phos
Protein Families:	Druggable Genome
Protein Pathways:	Inositol phosphate metabolism, Metabolic pathways, Phosphatidylinositol signaling system
MW:	104 kDa
Gene Summary:	This gene encodes an inositol polyphosphate 5-phosphatase. This protein is involved in regulating membrane trafficking and is located in numerous subcellular locations including the trans-Golgi network, clathrin-coated vesicles and, endosomes and the plasma membrane. This protein may also play a role in primary cilium formation. Mutations in this gene cause oculocerebrorenal syndrome of Lowe and also Dent disease. Alternate splicing results in multiple transcript variants. [provided by RefSeq, Jan 2016]

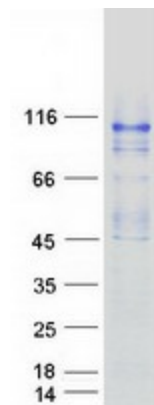
Product images:



Circular map for RC220672



Western blot validation of overexpression lysate (Cat# [LY400105]) using anti-DDK antibody (Cat# [TA50011-100]). Left: Cell lysates from untransfected HEK293T cells; Right: Cell lysates from HEK293T cells transfected with RC220672 using transfection reagent MegaTran 2.0 (Cat# [TT210002]).



Coomassie blue staining of purified OCRL protein (Cat# [TP320672]). The protein was produced from HEK293T cells transfected with OCRL cDNA clone (Cat# RC220672) using MegaTran 2.0 (Cat# [TT210002]).