

Product datasheet for RC220670

DENND4B (NM_014856) Human Tagged ORF Clone

Product data:

| | |
|---------------------------|---|
| Product Type: | Expression Plasmids |
| Product Name: | DENND4B (NM_014856) Human Tagged ORF Clone |
| Tag: | Myc-DDK |
| Symbol: | DENND4B |
| Synonyms: | KIAA0476 |
| Mammalian Cell Selection: | Neomycin |
| Vector: | pCMV6-Entry (PS100001) |
| E. coli Selection: | Kanamycin (25 ug/mL) |
| ORF Nucleotide Sequence: | >RC220670 representing NM_014856 Red=Cloning site Blue=ORF Green=Tags(s) |

TTTTGTAATACGACTCACTATAGGGCGGCCGGAATTCGTCGACTGGATCCGGTACCGAGGAGATCTGCC
GCC**CGATCGCC**

ATGGCGGAGGAGCGGCCCGGCTGGTGGATTCTTCGTGGTAGCTGGGCTTGCAGGGAACGGAGCAC
CCATCCCTGAGGAAACGTGGTTCTGAACCCAGTGGGCCCTGCGCCCTCCCGGCCAGCTGAGCCCAT
CACAGATGTGGCAGTCATCGCTAGGGCACTGGGCGAGGAAGTCCCCAGGGCTACACATGCATCCAGGCT
TCTGCTGGGGCCACCCCTTGGAACTCAGTGTGGACTTCTGGTGGAACTCAACCCGTCATCTGCTACC
GCAGGGGCGGTGACAAGCCCCCTCGTTGAGCTGGGGTGTGTATGAGGGGAAGGAACGTCCCAAGCC
TGGCTTCCAAGTCTTGACACGACACCCTACAGCCACTCAGCAAACCTGGCCCTCCAGGCCCGGGCAC
CCCCGCACCTACCTCACTTACCGCGGGCAGCAGAGGGGGCAGGGCTGCATGCCCTGGGCATCACTGACC
TCTGCCTGGTGTCTGCCAGTAAGGGCGAGGGCACTCCTCATACTTACTGCCGGCTGCCCGCAACCTCAA
CCCTGGCATGTGGGGCCAGCAGTGTACCTGTGCTATAAGGTGGGCTGGCGAAGGCCAACACGCTGGTG
TACGAGGCAGAGCTGTGGGCGCTACCCGAGGAGGACAATGAGGCGTTCGCTGCCGAGTCACTGCTGC
CCGCTTCTGCCTGCCATGGGGCCACTATCGAGTGTGGCTGCCAGACCAAGTACCCCGTGGCCGT
CTTCTCCACCTTTGTGCTCACGGTGCAGCTGGTGATAAGGTGTATGGTGCCGCCTGCAGTTCTACGAG
GCGTTCCCAAGGGCCAGGCTATCAGAGCGACAGGCACGGGCCTGGCCCTGCTGAGCGCCGTGGAGCGGG
GTCGGGCACTGGGGGCGAGAGCTGTGCGCAGCCGCGTGCCATCGCTGTGCTGTCCCGCTGGCCTGCCTT
CCCTGCCTTCCGCGCCTTCTCACCTTCTTTACCGCTACTCCGCTCAGGCCCCACCGCCTACCTTGG
GAAGCGCACATCTCCCACTTCACTCACACGTTCCCTTCCCTTCCCCACAGAGACCCCGCATCTAGTGC
AGATGTCTCCCTATGACAACTTGTCTCTGTGAGCCTGTATCCTCACCCCTGCCCTCAGTGGTGCCAG
CTTCTGCAGCTGCTGCAGAGCCTGGGCCCTGAGCTGGCTATCACACTGCTGCTGGCTGTGCTCACAGAG
CACAAGCTGCTAGTCCACTCGCTGCGGCCAGACCTGCTCACCAGCGTCTGTGAGGCCCTCGTCTCGATGA
TCTTCCCACTGCACTGGCAGTGGCCCTACATTCCTCTGTGCCGCTGGTGTGGCAGATGTGCTGAGTGC
CCCAGTGCCTTCACTTGGGTATCCACTCCAGCTACTTGTATCTGCATGACCCGCTGCTGATGTCATC



[View online >](#)

TGTGTAGACCTTGATACCAACACGCTCTTCCAGACTGAGGAAAAGAAGCTCCTCTCCCCTCGGACCCTGC
 CCCGCAGACCCTACAAGTTCTGCTGGCCACACTGACAAACCTGTACCAGCAGCTGGACCAGACATACAC
 TGGACCTGAGGAGGAAGCATCCCTGGAGTTCCTACTGACAGACTACGAGGCAGTGTGTGGCCGAGGGCC
 CGGCTGGAGCGCAAGTCCAAGGAGCCTTCTCCGCTTTCATGGCCTGTCTGCTCAAGGGCTACCGGGTCT
 TCCTGCGCCACTCACCCAGGCCCTCCGAGGGAGCTCGTGATGTTGACAACCTTTTCTTCTGCAAGG
 CTTCTCAAATCCCGGGAACGCTCCAGCCACAACTTTACTCTCAGCTGCTGCACACACAGATGTTCTCA
 CAGTTCATTGAGGAGTGCTCTTTGGCTGCTGCTGCCATGCTGCCCTTGAATTCTTTGACTTTGTGTTG
 AAAAGGTCACCCAGAGCAGGAGAAGCCTGAGCCGACACCCTTAGTGGAGCTAGAGGAGCTGTCAGGAAG
 TGAGCTACTGTCTTTATCACACCTCCCAGGAGCCTGCCTTACCAGAGGGCAGTGAATCCACTCCCAG
 TACTGCTATGATGGATTCCCAGAGCTACGGGCTGAGTTGTTTGTGCTCTTCAAGAGCAACCTGGGGCC
 TGCCTGTGCCAGGCCCTCCCAGTCCGCCCCAGCAGTCTGCTCCTCGCCGTACCAAACAGGAGATGAA
 AGTTGCACAGCGGATGGCACAGAAGTCAGCAGCTGTGCCTGAGCTGTGGCCCGGTGCCTGCTGGGGCAC
 TGCTATGGGCTGTGGTTCCTGTGTCTGCCTGCCTATGTGCGGTGGCACCCCTCCCGAGTGCAGGCCTGC
 ACACAGCCTACCATGTGTGCGCCAGATGGAGAGCGGCAAGGTGGTGTCTCCTGATGAGGTGTGTTACCG
 GGTACTGATGCAGCTCTGCTCACACTATGGGCAGCCTGTGCTGTCTGTGCGGGTCTGCTGGAGATGCGT
 CAGGCAGGCATTGTGCCAACACCATCACTATGGCTACTACAATAAGGCTGTGTGGAAAGCAAGTGGC
 CGTCTGGCACACCAGGTGGGCGTCTGCGCTGGGCCAAGCTCCGGAATGTTGTCCTGGGGGCTGCTCAGTT
 CCGCCAGCCCTTGAGAGAACGGCAACAGCAGCAGCAGCAACAGCAGCAGCAGCAGCAGCAGCAGCAGCAG
 GAGCAGGTGTCAGCACATCAAGAGGCAGGCAGCTCCCAGGCAGAGCCCTATTTGGAGCGCCCTCCCCTA
 CTCGCCCTCTTACAGCGCCAGACTACTGGGCTGGGCGAAGTCTGAGAGACCCAGCCTCACCCCTGGACG
 CCTGGTGAAGAGTGGTAGCCTGGCAGTGCCCGAGGGGCACAGCCACTGTGGAGCCGGTGTGGCCAC
 ATGATAGAGGCCCTTGGGGTCTTGAACCCCGGGATCACCTGTCCCTGGCACGATGGAAGTCTCTCAG
 ACCTGAGCCTGACAGGGGAGGACCGCTCCCTGGAGGCAGCCAGGGGGTCCAGGCTCAGCCCTGAGTGC
 CCAAGTCCACTGAGGCCCTGGAAGGGCTAAGTGGGCGGGGACCCAAAGGCTGGTGGGCGACAGGATGAGGCA
 GGCACCCCGCAGAGGGCTGGGTGCCCGCTCCAACAGCTGCTCACTCCTTCCCGCCACTCCCCTGCCT
 CCCGCATTCCCCACCTGAGCTGCCTCCTGACCTGCCACCCCGAGCCCGCCGAGCCCATGGACAGTCT
 TCTGCACCCCGGAGCGCCCTGGATCCACTGCCTCCGAGAGCTCAGCCTCTCTGGGCGAGTGGTGGGAC
 CTCTCAGAATCTTCTCTCAGCAACCTGAGTCTTCCGCGTTCCTCAGAGCGCCTCAGTGCACCCCTGGAT
 CCTTCCAGTACCTTCCCTGGAATTTCTGCTGTCCAGCTGCTCCTGTGCCGTGCCTGTGATTGCTGGT
 GTATGATGAGGAAATCATGGCTGGCTGGGCACCTGATGACTCTAACCTCAACACAACCTGCCCTTCTGC
 GCCTGCCCTTTGTGCCCTGCTCAGTGTCCAGACCCTTGATTCCCGGCCAGTGTCCCAGCCCCAAAT
 CTGCTGGTGCCAGTGGCAGCAAAGATGCTCCTGTCCCTGGTGGTCTGGCCCTGTGCTCAGTGACCGAAG
 GCTCTGCCTTGTCTGGATGAGCCCGAGCTTGAACGGGCACATGGGGGGAGCCTCCCGCGGGTGTGAG
 AGTGGGGCATGGGCATACCTGAGCCCCCTGGTGTGCGTAAGGAGCTGGAGTCCGCTGGTAGAGAACGAGG
 GCAGTGAGGTGCTGGCGTTGCCTGAACTGCCCTGCCCCACCCATCATCTTCTGGAACCTTTGTGGTA
 TTTCAACGGCTACGCTGCCAGTATTCTACCAGGCCTGGTGTGCCCTCCTGTGATGGGCTTCCGCAC
 TCCCAGGCCCATCTCCTTGGCTAACCCCTGATCCAGCCTCTGTTACAGTACGGCTGCTGTGGGATGTAC
 TGACCCCTGACCCCAATAGTGGCCACCTCTATGTGCTCTGGAGGGTCCACAGCCAGATCCCCAGCG
 GGTGGTATGGCCAGGCCCTGTACCTGCATCCCTTAGTTTGGCACTGTTGGAGTCACTGCGCCATGTT
 GGACTCAATGAAGTGCACAAGGCTGTGGGCTCCTGCTGGAACCTTAGGGCCCCACCCACTGGCCTGC
 ACCTGCAGAGGGGAATCTACCGTGAATATTCTGACAATGGCTGCTCTGGGCAAGGACCAGTGGGA
 CATAGTGGCCTTCGATAAGAAGTACAAGTCTGCCTTTAAACAAGCTGGCCAGCAGCATGGGCAAGGAGGAG
 CTGAGGCACCGCGGGCGCAGATGCCACTCCCAAGGCCATTGACTGCCGAAAATGTTTTGGAGCACCTC
 CAGAAATGC

ACGCGTACGCGGCGGCTCGAGCAGAACTCATCTCAGAAGAGGATCTGGCAGCAAATGATATCCTGGATT
 ACAAGGATGACGACGATAAGGTTTAA

Protein Sequence: >RC220670 representing NM_014856
 Red=Cloning site Green=Tags(s)

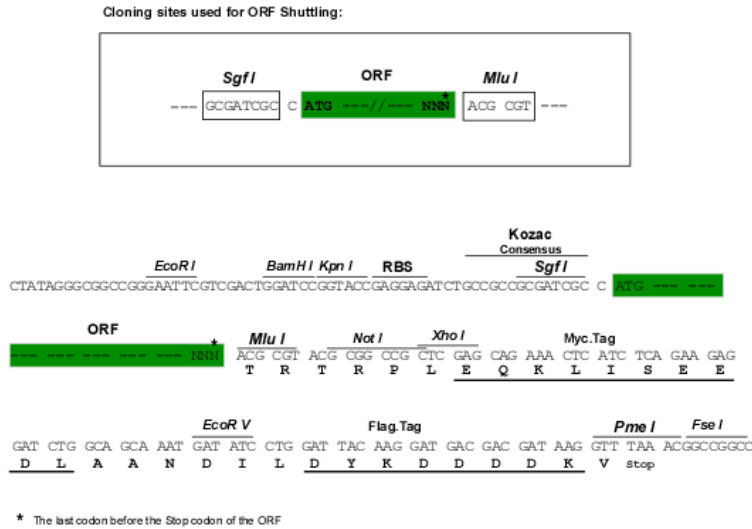
MAEERPPRLVDYFVAVAGLAGNGAPIPEETWVPEPSGLRPPRPAEPIITDVAVIARALGEEVPOGYTCIQA
 SAGGHPLLELSAGLLGGTQPVICYRRGRDKPPLVELGVL YEGKERPKPGFQVLDTPYSHSANLAPPGPGH
 PRTYLYT YRRAEAGAGLHALGITDCLVLP SKGEGTPHTYCRLPRNLNPGMWGPAVYLCYKVLAKANTLV
 YEAE LLGRYP EEDNEAFPLPESVVPVFC LPMGATIECWPAQTKYPVPVVFSTFVL TGAAGDKVYGAALQFYE
 AFPRARL SERQARALGLLSAVERGRALGGRAVRSRRAIAVLSRWPAPAFRAFLTFLYRYSVSGPHRLPL
 EAHISHFIHNVFPFPSPQRPRI L VQMSPYDNLLLQCPVSSPLPLSGASFLQLLQSLGPELAITLLAVL TE
 HKLLVHSLRPDLLTSVCEALVSMIFPLHWQCPYIPLCPLVLADVL SAPVPFIVGIHSSYFDLHDPADV I
 CVDLDTNTLFQTEEKLLSPRTLPRRPYKVLATL TNLYQQLDQTYTGPEEEASLEFLLTDYEAVCGRRA
 RLEREVQGAFLRFMACLLKG YRVFLRPLTQAPSEGARDVDNLFLLQGFLKSRERSHKLYSQLLHTQMFS
 QFIEECFSGSARHAALFFDSCVEKVHPEQEKEPTPLVELEELSGSELTVFITPPEEPALPEGSESTPQ
 YCYDGFPELRAELFESLQE QPGALPVPGPSRSAPSSAPRRTKQEMKVAQRMAQSAAVPELWARCLLGH
 CYGLWFLCLPAYVRSAPSRVQALHTAYHVL RQMESGKVVL PDEV CYRVL MQLCSHYGQPVLSVRVMLEMR
 QAGIVPNTITYGYNKAVLESKWPSGTPGGRLRWAKLRNVVLGAAQFRQPLRERQQQQQQQQQQQQQQ
 EQVSAHQEAGSSQAEPYLERPSPTRPLQRQTTWAGRSLRDPASPPGRLV KSGSLGSARGAQPTVEAGVAH
 MIEALGVLEPRGSPVPWHDGSLSDL SLTGEEPLPGGSPGGSGSALSAQSTEALEGLSGRGPKAGGRQDEA
 GTPRRGLGARLQQLTPSRHSPASRI PPELPPDLPPPARRSPMDSL LHPRERPGSTASSESSALGSEWD
 LSESSLNLSLRSSERLSDTPGSFQSPSLEILLSSCSL CRACDSL VYDEEIMAGWAPDDSNLNTTC PFC
 ACPFVPLL SVQTLDSRPSVSPK SAGASGSKDAPVPGGPVLSDRRLCLALDEPQLCNGHMGGSARRVE
 SGAWAYLSPLVLRKELESLVENEGSEVLALPELPSAHP IIFWNLLWYFQRLRLPSILPGLVLASCDG PSH
 SQAPSPWLTPDPASVQVRLLDVLTDPDN SCPPLYVLRVHSQIPQRVWVPGVPVPSL LALLESVLRHV
 GLNEVHKAVGLLLET L GPPPTGLHLQRGIYREILFL TMAALGKDHVDIVAFDKKYKSAFNKLASSMGKEE
 LRHRR AQMPTPKAIDCRKCF GAPPEC

TRTRPLEQKLISEEDLAANDILDYKDDDDKV

Chromatograms: https://cdn.origene.com/chromatograms/mk8042_b11.zip

Restriction Sites: SgfI-MluI

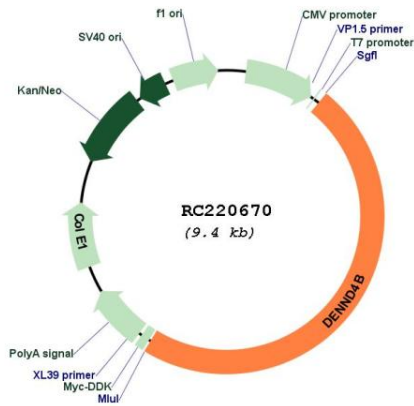
Cloning Scheme:



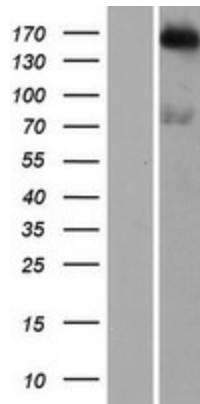
ACCN: NM_014856

| | |
|-------------------------------|---|
| ORF Size: | 4488 bp |
| OTI Disclaimer: | The molecular sequence of this clone aligns with the gene accession number as a point of reference only. However, individual transcript sequences of the same gene can differ through naturally occurring variations (e.g. polymorphisms), each with its own valid existence. This clone is substantially in agreement with the reference, but a complete review of all prevailing variants is recommended prior to use. More info |
| OTI Annotation: | This clone was engineered to express the complete ORF with an expression tag. Expression varies depending on the nature of the gene. |
| Components: | The ORF clone is ion-exchange column purified and shipped in a 2D barcoded Matrix tube containing 10ug of transfection-ready, dried plasmid DNA (reconstitute with 100 ul of water). |
| Reconstitution Method: | <ol style="list-style-type: none">1. Centrifuge at 5,000xg for 5min.2. Carefully open the tube and add 100ul of sterile water to dissolve the DNA.3. Close the tube and incubate for 10 minutes at room temperature.4. Briefly vortex the tube and then do a quick spin (less than 5000xg) to concentrate the liquid at the bottom.5. Store the suspended plasmid at -20°C. The DNA is stable for at least one year from date of shipping when stored at -20°C. |
| RefSeq: | NM_014856.3 |
| RefSeq Size: | 5688 bp |
| RefSeq ORF: | 4491 bp |
| Locus ID: | 9909 |
| UniProt ID: | O75064 |
| Cytogenetics: | 1q21.3 |
| Domains: | DENN, PPR, dDENN |
| MW: | 163.7 kDa |
| Gene Summary: | Guanine nucleotide exchange factor (GEF) which may activate RAB10. Promotes the exchange of GDP to GTP, converting inactive GDP-bound Rab proteins into their active GTP-bound form. [UniProtKB/Swiss-Prot Function] |

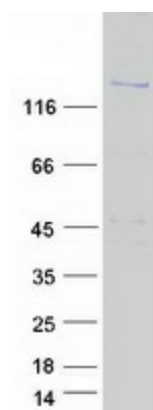
Product images:



Circular map for RC220670



Western blot validation of overexpression lysate (Cat# [LY414984]) using anti-DDK antibody (Cat# [TA50011-100]). Left: Cell lysates from untransfected HEK293T cells; Right: Cell lysates from HEK293T cells transfected with RC220670 using transfection reagent MegaTran 2.0 (Cat# [TT210002]).



Coomassie blue staining of purified DENND4B protein (Cat# [TP320670]). The protein was produced from HEK293T cells transfected with DENND4B cDNA clone (Cat# RC220670) using MegaTran 2.0 (Cat# [TT210002]).