

Product datasheet for RC220667L1

RIOK1 (NM_031480) Human Tagged Lenti ORF Clone

Product data:

Product Type:	Expression Plasmids
Product Name:	RIOK1 (NM_031480) Human Tagged Lenti ORF Clone
Tag:	Myc-DDK
Symbol:	RIOK1
Synonyms:	AD034; bA288G3.1; RIO1; RRP10
Mammalian Cell Selection:	None
Vector:	pLenti-C-Myc-DDK (PS100064)
E. coli Selection:	Chloramphenicol (34 ug/mL)
ORF Nucleotide Sequence:	The ORF insert of this clone is exactly the same as(RC220667).
Restriction Sites:	SgfI-MluI
Cloning Scheme:	

Cloning sites used for ORF Shuttling:



* The last codon before the Stop codon of the ORF.

ACCN:	NM_031480
ORF Size:	1704 bp



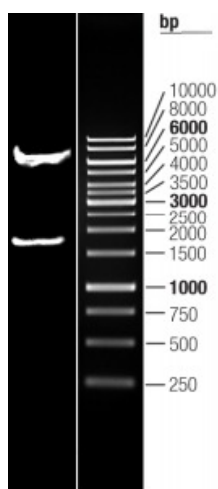
[View online »](#)

OTI Disclaimer:	The molecular sequence of this clone aligns with the gene accession number as a point of reference only. However, individual transcript sequences of the same gene can differ through naturally occurring variations (e.g. polymorphisms), each with its own valid existence. This clone is substantially in agreement with the reference, but a complete review of all prevailing variants is recommended prior to use. More info
OTI Annotation:	This clone was engineered to express the complete ORF with an expression tag. Expression varies depending on the nature of the gene.
Components:	The ORF clone is ion-exchange column purified and shipped in a 2D barcoded Matrix tube containing 10ug of transfection-ready, dried plasmid DNA (reconstitute with 100 ul of water).
Reconstitution Method:	<ol style="list-style-type: none"> 1. Centrifuge at 5,000xg for 5min. 2. Carefully open the tube and add 100ul of sterile water to dissolve the DNA. 3. Close the tube and incubate for 10 minutes at room temperature. 4. Briefly vortex the tube and then do a quick spin (less than 5000xg) to concentrate the liquid at the bottom. 5. Store the suspended plasmid at -20°C. The DNA is stable for at least one year from date of shipping when stored at -20°C.
RefSeq:	NM_031480.2 , NP_113668.2
RefSeq Size:	2495 bp
RefSeq ORF:	1707 bp
Locus ID:	83732
UniProt ID:	Q9BRS2
Cytogenetics:	6p24.3
Domains:	RIO
Protein Families:	Druggable Genome, Protein Kinase
MW:	65.4 kDa
Gene Summary:	The protein encoded by this gene competes with pICln for inclusion in the protein arginine methyltransferase 5 complex. This complex targets substrates for dimethylation. The encoded protein is essential for the last steps in the maturation of 40S subunits. [provided by RefSeq, Jan 2017]

Product images:



Circular map for RC220667L1



Double digestion of RC220667L1 using SgfI and MluI