

Product datasheet for **RC220662**

BOLA2B (NM_001039182) Human Tagged ORF Clone

Product data:

Product Type: Expression Plasmids
Product Name: BOLA2B (NM_001039182) Human Tagged ORF Clone
Tag: Myc-DDK
Symbol: BOLA2B
Synonyms: BOLA2
Mammalian Cell Selection: Neomycin
Vector: pCMV6-Entry (PS100001)
E. coli Selection: Kanamycin (25 ug/mL)
ORF Nucleotide Sequence: >RC220662 representing NM_001039182
Red=Cloning site Blue=ORF Green=Tags(s)

TTTTGTAATACGACTCACTATAGGGCGGCCGGAATTCGTCGACTGGATCCGGTACCGAGGAGATCTGCC
GCC**CGATCGCC**

ATGGCAAGCGGAAAAGCCTGGACCGCTGGAAAGCCGGCTGCTTGAGGGCGGAAGTACTGCGTTGACGT
ACGCCTTAGTAAGGGCGGAAGTGAGTTTTCCAGCGGAAGTGGCTCCTGTAAGGCAGCAAGGTAGCGTGCC
CGGCGCCCGAGCTGGGGTTGTGTCCCTGCTGGCTGCCGTTCCAGCTGGACTGCCCCATGGAACACTCAGC
GCCGAATACCTCCGCGAGAAGCTGCAGCGGGACCTGGAGGCGGAGCATGTGGAGGTGGAGGACACGACCC
TCAACCGTTGCTCCTGTAGCTTCCGAGTCTGGTGGTGTGGCCAAGTTCGAGGGGAAACCGCTGCTTCA
GAGACACAGGCTGGTGAACGCGTGCCTAGCAGAAGAGCTCCCGCACATCCATGCCTTTGAACAGAAAACC
CTGACCCAGACCACTGGGCACGTGAGCGACAGAAA

AG**CGGACCG**ACGCGTACGCGGCCGCTCGAGCAGAAACTCATCTCAGAAGAGGATCTGGCAGCAAATGATATCC
TGGATTACAAGGATGACGACGATAAGGTTTAA

Protein Sequence: >RC220662 representing NM_001039182
Red=Cloning site Green=Tags(s)

MASAKSLDRWKARLLEGGSTALTYALVRAEVSFPAEVAPVRQQGSVAGARAGVVSLLGCRSSWTAAMELS
AEYLREKLQRDLAEHVEVEDTTLNRCSCSFRVLVVSFAKFEKPLLQRHRLVNACLAEEELPHIHAFEQKT
LTPDQWARERQK

SGPTRRRLEQKLI SEEDLAANDILDYKDDDDKV

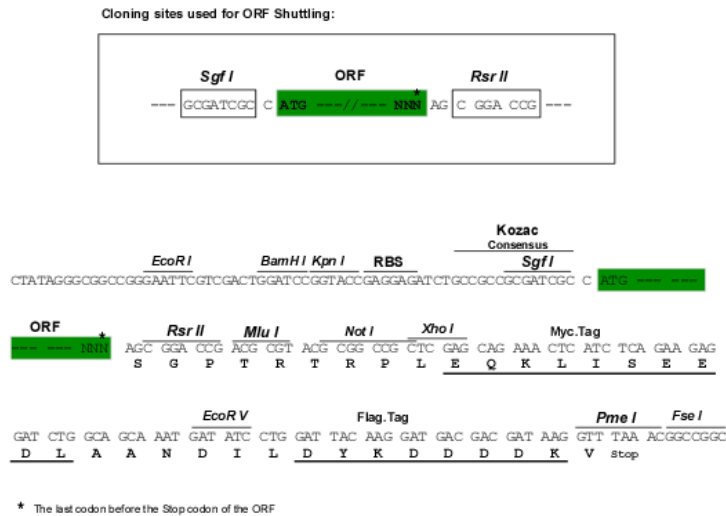
Chromatograms: https://cdn.origene.com/chromatograms/ja1442_a05.zip



[View online »](#)

Restriction Sites: SgfI-RsrII

Cloning Scheme:



ACCN: NM_001039182

ORF Size: 456 bp

OTI Disclaimer: The molecular sequence of this clone aligns with the gene accession number as a point of reference only. However, individual transcript sequences of the same gene can differ through naturally occurring variations (e.g. polymorphisms), each with its own valid existence. This clone is substantially in agreement with the reference, but a complete review of all prevailing variants is recommended prior to use. [More info](#)

OTI Annotation: This clone was engineered to express the complete ORF with an expression tag. Expression varies depending on the nature of the gene.

Components: The ORF clone is ion-exchange column purified and shipped in a 2D barcoded Matrix tube containing 10ug of transfection-ready, dried plasmid DNA (reconstitute with 100 ul of water).

Reconstitution Method:

1. Centrifuge at 5,000xg for 5min.
2. Carefully open the tube and add 100ul of sterile water to dissolve the DNA.
3. Close the tube and incubate for 10 minutes at room temperature.
4. Briefly vortex the tube and then do a quick spin (less than 5000xg) to concentrate the liquid at the bottom.
5. Store the suspended plasmid at -20°C. The DNA is stable for at least one year from date of shipping when stored at -20°C.

RefSeq: [NM_001039182.2](#), [NP_001034271.1](#)

RefSeq Size: 1012 bp

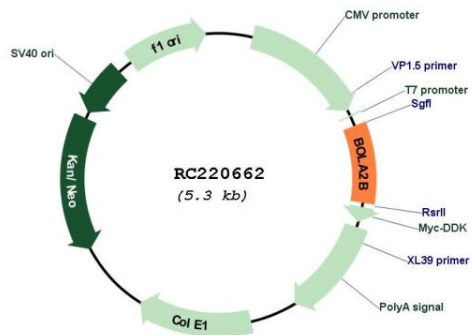
RefSeq ORF: 261 bp

Locus ID: 654483

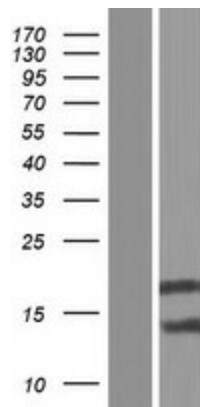
UniProt ID: [Q9H3K6](#)
 Cytogenetics: 16p11.2
 MW: 16.8 kDa

Gene Summary: This gene is located within a region of a segmental duplication on chromosome 16 and is identical to BOLA2 (bola family member 2). The product of this gene belongs to a family of proteins that are widely conserved and may be involved in iron maturation. Alternative splicing results in multiple transcript variants. [provided by RefSeq, Feb 2016]

Product images:



Circular map for RC220662



Western blot validation of overexpression lysate (Cat# [LY422026]) using anti-DDK antibody (Cat# [TA50011-100]). Left: Cell lysates from untransfected HEK293T cells; Right: Cell lysates from HEK293T cells transfected with RC220662 using transfection reagent MegaTran 2.0 (Cat# [TT210002]).