

Product datasheet for **RC220658**

SP3 (NM_001017371) Human Tagged ORF Clone

Product data:

Product Type:	Expression Plasmids
Product Name:	SP3 (NM_001017371) Human Tagged ORF Clone
Tag:	Myc-DDK
Symbol:	SP3
Synonyms:	SPR2
Mammalian Cell Selection:	Neomycin
Vector:	pCMV6-Entry (PS100001)
E. coli Selection:	Kanamycin (25 ug/mL)



[View online »](#)

ORF Nucleotide Sequence:

>RC220658 representing NM_001017371
 Red=Cloning site Blue=ORF Green=Tags(s)

TTTTGTAATACGACTCACTATAGGGCGGCCGGGAATTCGTCGACTGGATCCGGTACCGAGGAGATCTGCC
 GCC**CGCATCGCC**

ATGGGGCCGCCATCGCCGGGCGACGACGAGGAGGAGCGGCCGCCGACGCCGGGGCCCCGCCGCCGCCG
 GAGCGACAGGTGATTTGGCTTCTGCACAGTTAGGAGGAGCACAAACCGATGGGAGGTTTTGTCAGCCAC
 ACCTACAATAAAAAGATGAAGCTGGTAACTAGTCCAGATTCCAAGTCTGCTACTTCAAGTGGGCAG
 TATGTTCTTCCCCTTCAGAATTTGCAGAATCAACAATATTTTCCGTTGCACCAGGATCAGATTCATCAA
 ATGGTGCAGTGTCCAGTGTCAATATCAAGTGATACCACAGATCCAGTCCAGCAGATGGTCCAGCAGTTCA
 AATTGGTTTTCACAGGCTTTCAGATAATGGGGTATAAATCAAGAAAGCAGTCAAATTCAGATCATTCT
 GGCTCTAATCAAACCTTACTTGCCTCTGGAACACCTTCTGCTAACATCCAGAATTCATACCACAGACTG
 GTCAGTCCAGGTTCCAGGAGTTGCAATGGTGGTTCATCTTTCTGGTCAAACCAAGTAGTTGCTAA
 TGTGCCTCTTGGTCTGCCAGGAAATATTACGTTTGTACCAATCAATAGTGTGATCTAGATTCTTTGGGA
 CTCTCGGGCAGTTCTCAGACAATGACTGCAGGCATTAATGCCGACGGACATTTGATAAACACAGGACAAG
 CTATGGATAGTTCAGACAATTCAGAAAGGACTGGTGGAGCGGGTTTCTCCTGATATTAATGAACTAATAC
 TGATACAGATTTATTTGTGCCAACATCCTTTCATCACAGTTGCCTGTTACGATAGATAGTACAGGTATA
 TTACAACAAAACAAAATAGCTTGACTACATCTAGTGGGCAGGTTCACTTTCAGATCTTCAGGGAAATT
 ATATCCAGTCCGCTGTTTCTGAAGAGACACAGGCACAGAATATTCAGGTTTCTACAGCACAGCCTGTTGT
 ACAGCATCTACAACCTCAAGAGTCTCAGCAGCCAAACAGTCAAGCCCAAATTTGCAAGGTATTACACCA
 CAGACAATCCATGGTGTGCAAGCCAGTGGTCAAAATATATCACAACAGGCTTTGCAAAATCTTCAGTTGC
 AGCTGAACTCCTGGAACCTTTTAAATTCAGGCACAGCAGTGAACCCCTTCTGGACAGGTAACCTTGGCAAC
 GTTTCAAGTACAAGGGGTCCAGAACTTGCAGAATTTGCAAAATACAGAATACTGCTGCCCAACAAATAACT
 TTGACGCCTGTTCAAACCTCACACTTGGTCAAGTTGCGGCAGGTGGAGCCTTCACTTCAACTCCAGTTA
 GTCTAAGCACTGGTCAAGTTGCCAAATCTACAAACAGTTACAGTGAACCTATAGATTCTGCTGGTATACA
 GCTACATCCAGGAGAGAATGCTGACAGTCTGCAGATATTAGGATCAAGGAAGAAGAACCTGATCCTGAA
 GAGTGGCAGTCAAGTGGTATTCTACCTTGAATACCAATGACCTAACACACTTAAGAGTACAGGTGGTAG
 ATGAAGAAGGGGACCAACAACATCAAGAAGGAAAAAGACTTCGGAGGGTAGCTTGCACCTGTCCCAACTG
 TAAAGAAGGTGGTGAAGAGTACCAATCTTGGGAAAAAGAAGCAACACATTTGTCATATACCAGGATGT
 GGTAAAGTCTATGGGAAGACCTCACATCTGAGAGCTCATCTGCGTTGGCATTCTGGAGAAGCCCTTTTG
 TTTGTAAGTGGATGTACTGTGGTAAAAGATTTACTCGAAGTGATGAATTACAGAGGCACAGAAGAACACA
 TACAGGTGAGAAGAAATTTGTTTGTCCAGAATGTTCAAAACGCTTTATGAGAAGTGACCCTTGCCAAA
 CATATTAACACACACCAGAATAAAAAAGGTATTCACTCTAGCAGTACAGTGTGGCATCTGTGGAAGCTG
 CGCGAGATGATACTTTGATTACTGCAGGAGGAACAACGCTTATCCTTGCAAAATTTCAACAAGGTTCTGT
 TTCAGGGATAGGAACTGTTAATACTTCCGCCACCAGCAATCAAGATATCCTTACCAACACTGAAATACCT
 TTACAGCTTGTACAGTTTCTGGAAATGAGACAATGGAG

ACGCGTACGCGGCCGCTCGAGCAGAACTCATCTCAGAAGAGGATCTGGCAGCAAATGATATCCTGGATT
 ACAAGGATGACGACGATAAGGTTTAA

Protein Sequence: >RC220658 representing NM_001017371
 Red=Cloning site Green=Tags(s)

```

MGPPSPGDDEEEAAAAAGAPAAAGATGDLASAQLGGAPNRWEVL SATPTTIKDEAGNLVQIPSAATSSGQ
YVLPLQNLQNQQIFSVAPGSDSSNGAVSSVQYQVIPQIQSADGQQVQIGFTGSSDNGGINQESSQIQIIP
GSNQTLLASGTPSANIQNLIPQTGQVQVQVQVAIGSSFPGQTQVVANVPLGLPGNITFPVINSVDLDSL
LSGSSQMTAGINADGHLINTGQAMDSSDNSERTGERVSPDINETNTDIDLFPVPTSSSSQLPVTIDSTGI
LQQNTNSLTTSSGQVHSSDLQGNVIQSPVSEETAQNIQVSTAQPVVQHLQLQESQQPTSQAQIVQGITP
QTIHGVAQSGQNISQQALQNLQLQNLPGTFLIQAQTVTPSGQVTWQTFQVQGVQNLQNLQIQNTAAQQIT
LTPVQTLTLGQVAAGGAFSTPVSLSLSTGQLPNLQTVTVNSIDSAGIQLHPGENADSPADIRIKEEEDPE
EWQLSGDSTLNTNDLTHLRVQVVEEGDQHQEGKRLRRVACTCPNCKEGGGRGTNLGKKKHICHIPGC
GKYYGKTSHLRAHLRWHSGERPFVCNWMYCGKRFTRSDQLQRHRRHTTGEKKFVCPCKRFRMSDHLAK
HIKTHQNKGIHSSSTVLASVEAARDDTLITAGGTTLILANIQQGVSVSGIGTVNTSATSNDILNTEIP
LQLVTVSGNETME
  
```

TRTRPLEQKLISEEDLAANDILDYKDDDDKV

Chromatograms: https://cdn.origene.com/chromatograms/mg2396_f10.zip

Restriction Sites: SgfI-MluI

Cloning Scheme:

Cloning sites used for ORF Shuttling:



* The last codon before the Stop codon of the ORF

ACCN: NM_001017371

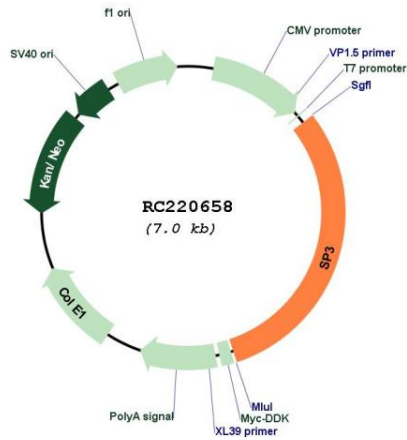
ORF Size: 2139 bp

OTI Disclaimer: The molecular sequence of this clone aligns with the gene accession number as a point of reference only. However, individual transcript sequences of the same gene can differ through naturally occurring variations (e.g. polymorphisms), each with its own valid existence. This clone is substantially in agreement with the reference, but a complete review of all prevailing variants is recommended prior to use. [More info](#)

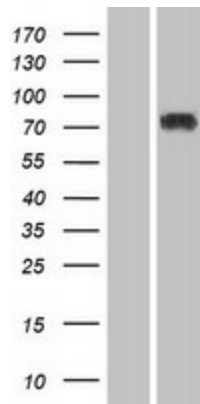
OTI Annotation: This clone was engineered to express the complete ORF with an expression tag. Expression varies depending on the nature of the gene.

Components:	The ORF clone is ion-exchange column purified and shipped in a 2D barcoded Matrix tube containing 10ug of transfection-ready, dried plasmid DNA (reconstitute with 100 ul of water).
Reconstitution Method:	<ol style="list-style-type: none">1. Centrifuge at 5,000xg for 5min.2. Carefully open the tube and add 100ul of sterile water to dissolve the DNA.3. Close the tube and incubate for 10 minutes at room temperature.4. Briefly vortex the tube and then do a quick spin (less than 5000xg) to concentrate the liquid at the bottom.5. Store the suspended plasmid at -20°C. The DNA is stable for at least one year from date of shipping when stored at -20°C.
RefSeq:	<u>NM_001017371.5</u>
RefSeq Size:	3980 bp
RefSeq ORF:	2142 bp
Locus ID:	6670
UniProt ID:	<u>Q02447</u>
Cytogenetics:	2q31.1
Protein Families:	Druggable Genome, Transcription Factors
MW:	75.1 kDa
Gene Summary:	This gene belongs to a family of Sp1 related genes that encode transcription factors that regulate transcription by binding to consensus GC- and GT-box regulatory elements in target genes. This protein contains a zinc finger DNA-binding domain and several transactivation domains, and has been reported to function as a bifunctional transcription factor that either stimulates or represses the transcription of numerous genes. Transcript variants encoding different isoforms have been described for this gene, and one has been reported to initiate translation from a non-AUG (AUA) start codon. Additional isoforms, resulting from the use of alternate downstream translation initiation sites, have also been noted. A related pseudogene has been identified on chromosome 13. [provided by RefSeq, Feb 2010]

Product images:



Circular map for RC220658



Western blot validation of overexpression lysate (Cat# [LY400394]) using anti-DDK antibody (Cat# [TA50011-100]). Left: Cell lysates from untransfected HEK293T cells; Right: Cell lysates from HEK293T cells transfected with RC220658 using transfection reagent MegaTran 2.0 (Cat# [TT210002]).