

## Product datasheet for **RC220656**

### ROR alpha (RORA) (NM\_134262) Human Tagged ORF Clone

#### Product data:

Product Type:	Expression Plasmids
Product Name:	ROR alpha (RORA) (NM_134262) Human Tagged ORF Clone
Tag:	Myc-DDK
Symbol:	ROR alpha
Synonyms:	IDDECA; NR1F1; ROR1; ROR2; ROR3; RZR-ALPHA; RZRA
Mammalian Cell Selection:	Neomycin
Vector:	pCMV6-Entry (PS100001)
E. coli Selection:	Kanamycin (25 ug/mL)



[View online »](#)

**ORF Nucleotide Sequence:**

>RC220656 ORF sequence  
 Red=Cloning site Blue=ORF Green=Tags(s)

TTTTGTAATACGACTCACTATAGGGCGGCCGGAATTCGTCGACTGGATCCGGTACCGAGGAGATCTGCC  
 GCC**CGGATCGCC**

ATGATGTATTTGTGATCGCAGCGATGAAAGCTCAAATTGAAATTATTCCATGCAAGATCTGTGGAGACA  
 AATCATCAGGAATCCATTATGGTGTATTACATGTGAAGGCTGCAAGGGCTTTTTTCAGGAGAAGTCAGCA  
 AAGCAATGCCACCTACTCCTGTCCTCGTCAGAAGAACTGTTTGATTGATCGAACCAGTAGAAACCGTGC  
 CAACACTGTGATTACAGAAATGCCTTGCCGTAGGGATGTCTCGAGATGCTGTAATAATTTGGCCGAATGT  
 CAAAAAGCAGAGAGACAGCTTGTATGCAGAAGTACAGAAACACCGGATGCAGCAGCAGCAGCGCACCA  
 CCAGCAGCAGCCTGGAGAGGCTGAGCCGCTGACGCCACCTACAACATCTCGCCAACGGGCTGACGGAA  
 CTTACAGCAGCCTCAGTAACACTGACGGGCACCCCTGAGGGGAGTAAGGCAGACTCCGCCGTCA  
 GCAGTTCTACCTGGACATACAGCCTTCCCAGACCAGTCAGGCTTGTATCAATGGAATCAAACCAGA  
 ACCAATATGTGACTACACACCAGCATCAGGCTTCTTCCCTACTGTTTCACCAACGGGAGACTTCC  
 CCAACTGTGTCCATGGCAGAATAGAACACCTTGACAGAATATATCTAAATCGCATCTGAAAACCTGCC  
 AATACTTGAGAGAAGAGCTCCAGCAGATAACGTGGCAGACCTTTTACAGGAAGAAATTGAGAACTATCA  
 AAACAAGCAGCGGGAGGTGATGTGGCAATTGTGTGCCATCAAATACAGAAAGCTATACAGTATGTGGTG  
 GAGTTTGCCAAACGCATTGATGGATTTATGGAAGTGTGTCAAATGATCAAATTTGCTTCTAAAAGCAG  
 GTTCTCTAGAGGTGGTGTATATCAGAATGTGCCGTGCCTTTGACTCTCAGAACACACCGGTACTTTGA  
 TGGGAAGTATGCCAGCCCGACGCTTCAAATCCTTAGGTTGTGAAGACTTTATTAGCTTTGTGTTTGA  
 TTTGAAAAGAGTTTATGTTCTATGCACCTGACTGAAGATGAAATGCAATTTTCTGCATTTGACTGA  
 TGTCAAGCAGATCGCTCATGGCTGCAAGAAAAGGTAAAAATTGAAAACTGCAACAGAAAAATTCAGTGT  
 TCTTCAACACGTCCTACAGAAGAATCACCGAGAAGATGGAATACTAACAAAGTTAATATGCAAGGTCT  
 ACATTAAGAGCCTTATGTGGACGACATACAGAAAAGCTAATGGCATTAAAGCAATATACCCAGACATTG  
 TGCGACTTCATTTTCTCCATTATACAAGGAGTTGTTCACTTCAGAATTTGAGCCAGCAATGCAAATTGA  
 TGGG

**ACGCGT**ACGCGGCCGCTCGAGCAGAAACTCATCTCAGAAGAGGATCTGGCAGCAAATGATATCCTGGATT  
 ACAAGGATGACGACGATAAGGTTTAA

**Protein Sequence:**

>RC220656 protein sequence  
 Red=Cloning site Green=Tags(s)

MMYFVIAAMKAQIEIIPCKICGDKSSGIHYGVITCEGCKGFFRRSQSNATYSCPRQKNCLIDRTSRNRC  
 QHCRLQKCLAVGMSRDVAVKFRMSKKQRDSL YAEVQKHRMQQQRDHQQPGEAEPLTPTYNISANGLTE  
 LHDDL SNIIDGHTPEGSKADSAVSFYLDIQSPDQSGLDINGIKPEPICDYTPASGFFPYCSFTNGETS  
 PTVSMAELEHLAQNISKSHLETCQYLREELQQITWQTFLEEIENYQNKQREVMWQLCAIKITEAIQYVV  
 EFAKRIDGMELCQNDQIVLLKAGSLEVVFIRMCRAFDSQNNVYFDGKYASPDVFKSLGCEDFISFVFE  
 FGKSLCSMHLTEDEIALFSFVLM SADRSLQEKVKIEKLQQKIQLALQHV LQKNHREDGILTKLICKV S  
 TLRALCGRHTEKLMAFKAIYPDIVRLHFPPLYKELFTSEFEPAMQIDG

**TR**TRPLEQKLI SEEDLAANDILDYKDDDDKV

**Chromatograms:**

[https://cdn.origene.com/chromatograms/mk6559\\_h06.zip](https://cdn.origene.com/chromatograms/mk6559_h06.zip)

**Restriction Sites:**

Sgfl-Mlul

**Cloning Scheme:**


**ACCN:** NM\_134262

**ORF Size:** 1404 bp

**OTI Disclaimer:** The molecular sequence of this clone aligns with the gene accession number as a point of reference only. However, individual transcript sequences of the same gene can differ through naturally occurring variations (e.g. polymorphisms), each with its own valid existence. This clone is substantially in agreement with the reference, but a complete review of all prevailing variants is recommended prior to use. [More info](#)

**OTI Annotation:** This clone was engineered to express the complete ORF with an expression tag. Expression varies depending on the nature of the gene.

**Components:** The ORF clone is ion-exchange column purified and shipped in a 2D barcoded Matrix tube containing 10ug of transfection-ready, dried plasmid DNA (reconstitute with 100 ul of water).

**Reconstitution Method:**

1. Centrifuge at 5,000xg for 5min.
2. Carefully open the tube and add 100ul of sterile water to dissolve the DNA.
3. Close the tube and incubate for 10 minutes at room temperature.
4. Briefly vortex the tube and then do a quick spin (less than 5000xg) to concentrate the liquid at the bottom.
5. Store the suspended plasmid at -20°C. The DNA is stable for at least one year from date of shipping when stored at -20°C.

**RefSeq:** [NM\\_134262.2](#)

**RefSeq Size:** 10669 bp

**RefSeq ORF:** 1407 bp

**Locus ID:** 6095

**UniProt ID:** [P35398](#)

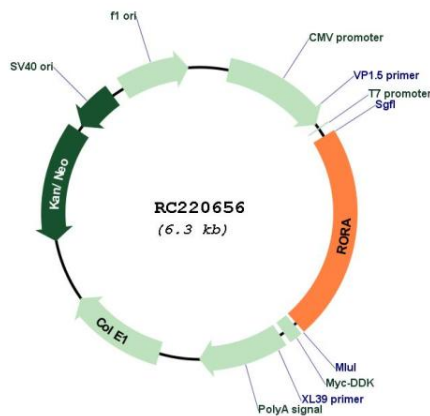
**Cytogenetics:** 15q22.2

**Protein Families:** Druggable Genome, Nuclear Hormone Receptor, Transcription Factors

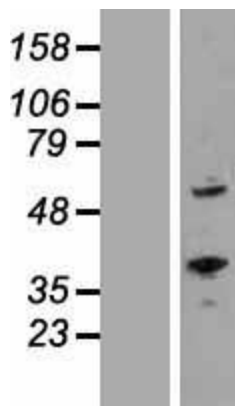
**MW:** 53.5 kDa

**Gene Summary:** The protein encoded by this gene is a member of the NR1 subfamily of nuclear hormone receptors. It can bind as a monomer or as a homodimer to hormone response elements upstream of several genes to enhance the expression of those genes. The encoded protein has been shown to interact with NM23-2, a nucleoside diphosphate kinase involved in organogenesis and differentiation, as well as with NM23-1, the product of a tumor metastasis suppressor candidate gene. Also, it has been shown to aid in the transcriptional regulation of some genes involved in circadian rhythm. Four transcript variants encoding different isoforms have been described for this gene. [provided by RefSeq, Feb 2014]

**Product images:**



Circular map for RC220656



Western blot validation of overexpression lysate (Cat# [LY408623]) using anti-DDK antibody (Cat# [TA50011-100]). Left: Cell lysates from untransfected HEK293T cells; Right: Cell lysates from HEK293T cells transfected with RC220656 using transfection reagent MegaTran 2.0 (Cat# [TT210002]).