

Product datasheet for RC220654

C10orf72 (VSTM4) (NM_144984) Human Tagged ORF Clone

Product data:

Product Type: Expression Plasmids
Product Name: C10orf72 (VSTM4) (NM_144984) Human Tagged ORF Clone
Tag: Myc-DDK
Symbol: C10orf72
Synonyms: C10orf72
Mammalian Cell Selection: Neomycin
Vector: pCMV6-Entry (PS100001)
E. coli Selection: Kanamycin (25 ug/mL)
ORF Nucleotide Sequence: >RC220654 representing NM_144984
 Red=Cloning site Blue=ORF Green=Tags(s)

TTTTGTAATACGACTCACTATAGGGCGGCCGGAATTCGTCGACTGGATCCGGTACCGAGGAGATCTGCC
GCC**CGATCGCC**

ATGCGGCTGCTGGCACTGGCGGGCGCGCTGCTGGCGGGCTCCGGCTCCGGAGGTCTGTGCGGCC
TCAATGCTACTGTGTCCCGGGCCCGTGGTTGACTACCTGGAGGGGAGAATGCCACTCTCTCTGCCA
CGTCTCCAGAAAAGCGGAAGGACAGCTTGTGGCCGTGCGCTGGTTCTTTGCACACTCCTTCGACTCC
CAGGAGGCCTTGATGGTGAAGATGACCAAGCTCCGGTGGTGCAGTACTATGGGAATTCAGCCGACGG
CCAAACGCGGAGGCTGCGCCTGCTGGAGGAGCAGCGGGGGCGCTCTACAGGCTCTCCGTCTTGACT
GCAGCCCTCCGATCAAGGCATTACGTCTGCAGAGTCCAGGAAATCAGCAGGCACAGGAACAAGTGGACG
GCCTGGTCCAATGGCTCCTCAGCCACGGAATGAGAGGAGTCTCCAGCCATCCAGTGGAGAGGGGAGCTT
TTCTTGGGATTTCCCTTGTAACTACTACCTCACTCTTGGCCCTCACCGCAGACTTAACCATGGCCTCCT
CCTGCAGAGTTCT

ACGCGTACGCGGGCGCTCGAGCAGAACTCATCTCAGAAGAGGATCTGGCAGCAATGATATCCTGGATT
ACAAGGATGACGACGATAAGGTTTAA

Protein Sequence: >RC220654 representing NM_144984
 Red=Cloning site Green=Tags(s)

MRLLLAAAAALLARAPAPEVCAALNVTVSPGPVVDYLEGENATLLCHVSQKRRKDSLLAVRWFFAHSFDS
QEALMVKMTKLRVVQYYGNFSRSKRRLRLLEEQRGALYRLSVLTLQPSDQGHYVCRVQEISRHRNKWT
AWSNGSSATEMRGVSSHPVERGAFLGISLVILPHSLPFTADLTMASFLQSS

TRTRPLEQKLISEEDLAANDILDYKDDDDKV



[View online »](#)

Chromatograms: https://cdn.origene.com/chromatograms/mk8012_d04.zip

Restriction Sites: SgfI-MluI

Cloning Scheme:



ACCN: NM_144984

ORF Size: 573 bp

OTI Disclaimer: The molecular sequence of this clone aligns with the gene accession number as a point of reference only. However, individual transcript sequences of the same gene can differ through naturally occurring variations (e.g. polymorphisms), each with its own valid existence. This clone is substantially in agreement with the reference, but a complete review of all prevailing variants is recommended prior to use. [More info](#)

OTI Annotation: This clone was engineered to express the complete ORF with an expression tag. Expression varies depending on the nature of the gene.

Components: The ORF clone is ion-exchange column purified and shipped in a 2D barcoded Matrix tube containing 10ug of transfection-ready, dried plasmid DNA (reconstitute with 100 ul of water).

Reconstitution Method:

1. Centrifuge at 5,000xg for 5min.
2. Carefully open the tube and add 100ul of sterile water to dissolve the DNA.
3. Close the tube and incubate for 10 minutes at room temperature.
4. Briefly vortex the tube and then do a quick spin (less than 5000xg) to concentrate the liquid at the bottom.
5. Store the suspended plasmid at -20°C. The DNA is stable for at least one year from date of shipping when stored at -20°C.

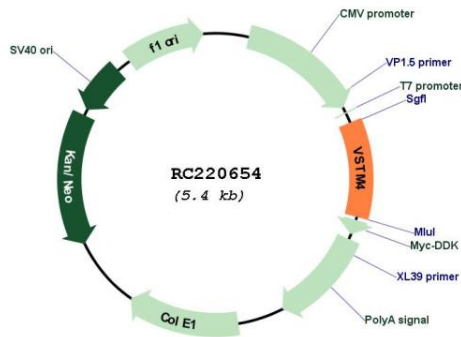
RefSeq: [NM_144984.4](#)

RefSeq Size: 2170 bp

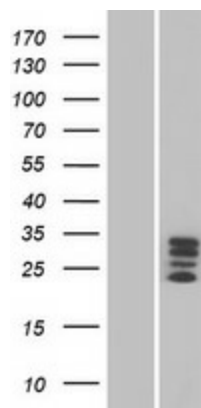
RefSeq ORF: 576 bp

Locus ID: 196740

UniProt ID: [Q8IW00](#)
Cytogenetics: 10q11.23
Protein Families: Transmembrane
MW: 21.1 kDa
Gene Summary: Peptide Lv enhances L-type voltage-gated calcium channel (L-VGCC) currents in retinal photoreceptors.[UniProtKB/Swiss-Prot Function]

Product images:


Circular map for RC220654



Western blot validation of overexpression lysate (Cat# [LY408124]) using anti-DDK antibody (Cat# [TA50011-100]). Left: Cell lysates from untransfected HEK293T cells; Right: Cell lysates from HEK293T cells transfected with RC220654 using transfection reagent MegaTran 2.0 (Cat# [TT210002]).