

Product datasheet for RC220652

ROS1 (NM_002944) Human Tagged ORF Clone

Product data:

Product Type:	Expression Plasmids
Product Name:	ROS1 (NM_002944) Human Tagged ORF Clone
Tag:	Myc-DDK
Symbol:	ROS1
Synonyms:	c-ros-1; MCF3; ROS
Mammalian Cell Selection:	Neomycin
Vector:	pCMV6-Entry (PS100001)
E. coli Selection:	Kanamycin (25 ug/mL)
ORF Nucleotide Sequence:	>RC220652 representing NM_002944 Red=Cloning site Blue=ORF Green=Tags(s)

TTTTGTAATACGACTCACTATAGGGCGGCCGGAATTCGTCGACTGGATCCGGTACCGAGGAGATCTGCC
GCC**CGATCGCC**

ATGAAGAACATTTACTGTCTTATCCGAAGCTTGTCAATTTTGCAACTCTTGGCTGCCTATGGATTTCTG
TGGTGCAGTGTACAGTTTTAAATAGCTGCCTAAAGTCGTGTGTAATACTGGGCCAGCAGCTTGACCT
TGGCACACCACATAATCTGAGTGAACCGTGTATCCAAGGATGTCACCTTTTGGAACTCTGTAGATCAGAAA
AACTGTGCTTTAAAGTGTGGGAGTCGTGTGAGGTTGGCTGTAGCAGCGCGGAAGGTGCATATGAAGAGG
AAGTACTGGAAAATGCAGACCTACCAACTGCTCCCTTTGCTTCTCCATTGGAAGCCACAATATGACATT
ACGATGGAAATCTGCAAACCTTCTCTGGAGTAAAATACATCATTAGTGGAAATATGCACAACCTTCTGGGA
AGCTGGACTTATACTAAGACTGTGTCCAGACCGTCCATGTGGTCAAGCCCCTGCACCCCTTCACTGAGT
ACATTTCCGAGTGGTTTGGATCTTACAGCGCAGCTGCAGCTCTACTCCCTCCAAGTCCCAGTTACAG
GACTCATCCTCATGGAGTTCCTGAAACTGCACCTTTGATTAGGAATATTGAGAGCTCAAGTCCCGACACT
GTGGAAGTCAGCTGGGATCCACCTCAATCCCAGGTGGACCTATTTGGGTTATAACTTAAGGCTGATCA
GCAAAAATCAAAAATTAGATGCAGGGACACAGAGAACCAGTTCCAGTTTACTCCACTTACCAAAATAC
TATCTACAGGTTTTCTATTGCAGCAGTAAATGAAGTTGGTGAGGGTCCAGAAGCAGAATCTAGTATTACC
ACTTCATCTTCAGCAGTCAACAAGAGGAACAGTGGCTCTTTTTATCCAGAAAACCTTCTAAGAAGA
GATCTTTAAAACATTTAGTAGATGAAGCACATTGCCTTCGGTTGGATGCTATATACCATAATATTACAGG
AATATCTGTTGATGTCCACCAGCAAATTGTTTATTTCTCTGAAGGAACTCTCATATGGGCGAAGAAGGCT
GCCAACATGTCTGATGTATCTGACCTGAGAATTTTTTACAGAGGTTCCAGGATTAATTTCTTCTATCTCCA
TAGATTGGCTTTATCAAAGAATGTATTTTCATCATGGATGAACTGGTATGTGTCTGTGATTAGAGAAGT
CTCAAACATCGAGGAAATTACTCCACCCTCTATTAGTGCACCTCAAAAAATTGTGGCTGATTACATAAT
GGGTATGTCTTTACCTCCTGAGAGATGGCATTATAGAGCAGACCTTCTGTACCATCTGGCCGGTGTG
CAGAAGCTGTGCGTATTGTGGAGAGTTGCACGTTAAAGGACTTTGCAATCAAGCCACAAGCCAAGCGAAT
CATTTACTCAATGACTGCCCAAGTCTTCATGTCAACATTTCTGGATGGCTCTGCTTCCCATCTCATC



[View online >](#)

CTACCTCGCATCCCCTTTGCTGATGTGAAAAGTTTTGCTTGTGAAAACAATGACTTTCTTGTACAGATG
GCAAGGTCATTTTCCAACAGGATGCTTTGTCTTTAATGAATTCATCGTGGGATGTGACCTGAGTCACAT
AGAAGAATTTGGGTTTGGTAACCTGGTCATCTTTGGCTCATCCTCCCAGCTGCACCCTCTGCCAGGCCGC
CCGCAGGAGCTTTGCGTGCTGTTTGGCTCTCACCAGGCTCTTGTTCATGGAAGCCTCTGCCCTTGCCA
TAGGAGCCAATGTCATCCTGATCAGTGATATTATTGAACCTTTGAATTAGGCCCTCTGCCCTGGCAGAA
CTGGACCTATGAGGTGAAAGTATCCACCAAGACCCTCCTGAAGTCACTCATATTTTCTTGAACATAAGT
GGAACCATGCTGAATGTACCTGAGTGCAGAGTGCTATGAAATACAAGGTTTCTGTGAGAGCAAGTCTC
CAAAGAGGCCAGGCCCTGGTCAGAGCCCTCAGTGGTACTACCCTGGTGCCAGCTAGTGAACCACCATT
TATCATGGCTGTGAAAGAAGATGGGCTTTGGAGTAAACCATTAAATAGCTTTGGCCAGGAGAGTCTTA
TCCTCTGATATAGGAAATGTGTGACAGATGGATTGGTATAACAACAGCCTCTACTACAGTACACGAAAAG
GCGACGTTTTTGTGGCTGCTGAATGGGACGGATATCTCAGAGAATTATCACCTACCCAGCATTGCAGG
AGCAGGGGCTTTAGCTTTTGTGGCTGGGTCACTTTCTACTGGGCTGGAAAGACATATGTGATAACA
AGGCAGTCTGTGTGACGGGACACAGACATTGTTACCCACGTGAAGCTATTGGTGAATGACATGGTGG
TGGATTCACTGGTGGATATCTCTACTGGACCACACTCTATTCACTGGAAAGCACCAGACTAAATGGGGA
AAGTTCCTTGTACTACAGACACAGCCTTGGTTTTCTGGGAAAAGGTAATTGCTCTAATTTAGACCTC
AGTGATGGGCTCCTGTATTGGTTGGTTCAGACAGTCAATGTATTACCTGTACACAGCTGTTCTTCGGG
GACAGAGCACTGGGATACCACCATCACAGAATTTGCAGCCTGGAGTACTTCTGAAATTTCCAGAAATGC
ACTGATGACTATAGTGGTGGGCTGTTCTGGATCAATGGCTTTAGGATTATCACAACTCAAGAAATAGGT
CAGAAAACCAAGTGTCTGTGTTTGGAAACAGCCAGATTTAATCAGTTCACAATTATTCAGACATCCCTTA
AGCCCCTGCCAGGGAACCTTTCCCTTACCCTAAGGTTATTCCAGATTCTGTTCAAGAGTCTTCATTTAG
GATTGAAGGAAATGCTTCAAGTTTTCAATCCTGTGGAATGGTCCCCCTGCGGTAGACTGGGGTGTAGTT
TTCTACAGTGTAGAATTTAGTGCTCATTCTAAGTCTTGGCTAGTGAACAACACTCTTACCTGTATTTA
CTGTGGAAGGACTGGAACCTTATGCCTTATTTAATCTTTCTGTCACTCCTTATACCTAGCTGGGAAAGGG
CCCCAAAACATCTGTCTCACTTTCGAGCCTGAAACAGTTCATCAGCACCAGAGAACCACCAAGAAATTT
ATATTACCAAGTGGAAAATGCTGCAACAAGAATGAAGTTGTGGTGAATTTAGGTGGAACAAACCTAAGC
ATGAAAATGGGGTGTAAACAAAATTTGAAATTTTCTACAATATATCCAATCAAAGTATTACAAAACAAAAC
ATGTGAAGACTGGATTGCTGTCAATGCTCACTCCCTCAGTGATGCTTTTTCAACTGAAGGCATGAGTCCC
AGATGCTTTATTGCCTCCAGGTTAGGGCTTTACATCTAAGGGGCCAGGACCATATGCTGACGTTGTAA
AGTCTACAACATCAGAAATCAACCCATTTCTCACCTCATAACTCTTCTGGTAAACAAGATAGTTTTTTT
AGATATGGATCAAATCAAGTTGTGTGGACGTTTTTCCAGCAGAAAGAGTTATCAGTGCCGTTTGTACACA
GCTGATAATGAGATGGGATATTATGCTGAAGGGGACTCACTCTTCTTCTGCACTGCACAATCGCTCTA
GCTCTGAGCTTTTCCAAGATTCAGTGGTTTTTGATATCACAGTTATTACAATTGACTGGATTTCAAGGCA
CCTCTACTTTGCACTGAAAGAATCACAATAAGGAAATGCAAGTATTTGATGTTGATCTTGAACACAAGGTG
AAATATCCAGAGAGGTGAAGATTCACAATAGGAATTCACAATAATTTCTTTTTCTGTATATCCTCTTT
TAAGTCGCTTGTATTGGACAGAAGTTTCCAATTTTGGCTACCAGATGTTCTACTACAGTATTATCAGTCA
CACCTTGACCCGAATTCGCAACCCACAGCTACAAACCAACAAAACAAAAGGAATCAATGTTCTTGTAAAT
GTGACTGAATTTGAGTTAAGTGGAGCAATGGCTATTGATACCTTAACCTAGAGAAACCATTGATATACT
TTGCCAAAGCACAAAGAGATCTGGGCAATGGATCTGGAAGGCTGTCACTGTTGGAGAGTTATCACAGTACC
TGCTATGCTCGCAGGAAAAACCCTTGTAGCTTAACTGTGGATGGAGATCTTATATACTGGATCATCACA
GCAAAGGACAGCACAGATTTATCAGGCAAAGAAAGGAAATGGGGCCATCGTTTTCCAGGTGAAGGCC
TAAGGAGTAGGCATATCTTGGCTTACAGTTCAGTTATGCAGCCTTTTCCAGATAAAGCGTTTCTGTCTCT
AGCTTCAGACACTGTGGAACCAACTATACTTAATGCCACTAACCTAGCCTCACAACTCAGATTACCTCTG
GCCAAGACAAAACCTCACATGGTATGGCATCACCAGCCCTACTCCAACATACCTGGTTTATTATGCAGAAG
TTAATGACAGGAAAAACAGCTCTGACTTGAATATAGAATTCTGGAAATTCAGGACAGTATAGCTCTTAT
TGAAGATTTACAACCTTTTCAACATACATGATACAGATAGCTGTAAAAAATTATTATTCAGATCCTTTG
GAACATTTACCACCAGGAAAAGAGATTTGGGAAAAACTAAAAATGGAGTACCAGAGGCAGTGCAGCTCA
TTAATACAACCTGTGCGGTGACACACCAGCCTCATTATATCTTGGAGAGAATCTCACAGCCAAATGGACC
TAAAGAATCAGTCCGTTATCAGTTGGCAATCTCACACCTGGCCCTAATCCTGAAACTCCTTAAGACAA
AGTGAATTTCAAATGGAAGGCTCACTCTCTTGTACTAGACTGTCTGGTGGAAATATTTATGTGTTAA
AGGTTCTTGCCTGCCACTCTGAGGAAATGTGGTGTACAGAGAGTCATCCTGTCACTGTGGAAATGTTTAA
CACACCAGAGAAACCTTATTCTTGGTTCCAGAGAACACTAGTTTGAATTTAATGGAAGGCTCCATTG
AATGTTAACCTCATCAGATTTTGGGTTGAGCTACAGAAGTGGAAATACAATGAGTTTTACCATGTTAAAA

CTTCATGCAGCCAAGGTCTGCTTATGTCTGTAATATCACAAATCTACAACCTTATACTTCATATAATGT
CAGAGTAGTGGTGGTTTATAAGACGGGAGAAAATAGCACCTCACTCCAGAAAGCTTTAAGACAAAAGCT
GGAGTCCCAAAATAAACAGGCATTCCCAAATTACTAGAAGGGAGTAAAAATCAATACAGTGGGAGAAAG
CTGAAGATAATGGATGTAGAATTACATACTATATCCTTGAGATAAGAAAGAGCACTTCAAATAATTTACA
GAACCAGAATTTAAGGTGAAGATGACATTTAATGGATCCTGCAGTAGTGTTCACATGGAAGTCCAAA
AACCTGAAAGGAATATTCAGTTCAGAGTAGTAGCTGCAATAATCTAGGGTTTGGTGAATATAGTGGAA
TCAGTGAGAATATTATATTAGTTGGAGATGATTTTTGGATACCAGAAACAAGTTTCATACTTACTATTAT
AGTTGGAATATTTCTGGTTGTTACAATCCCACTGACCTTTGTCTGGCATAGAAGATTAAAGAATCAAAAA
AGTGCCAAGGAAGGGGTGACAGTGCTTATAAACGAAGACAAGAGTTGGCTGAGCTGCGAGGTCTGGCAG
CCGGAGTAGGCCTGGCTAATGCCTGCTATGCAATACATACTCTTCCAACCAAGAGGAGATTGAAAATCT
TCCTGCCTCCCTCGGAAAAACTGACTCTGCGTCTCTTGCTGGGAAGTGGAGCCTTTGGAGAAGTGTAT
GAAGGAACAGCAGTGGACATCTTAGGAGTTGGAAGTGGAGAAATCAAAGTAGCAGTGAAGACTTTGAAGA
AGGGTTCCACAGACCAGGAGAAGATTGAATTCCTGAAGGAGGCACATCTGATGAGCAAATTAATCATCC
CAACATTCGAAGCAGCTTGGAGTTTGTCTGCTGAATGAACCCCAATACATTATCCTGGAAGTATGGAG
GGAGGAGACCTTCTTACTTATTTGCGTAAAGCCGGATGGCAACGTTTTATGGTCTTTACTCACCTTGG
TTGACCTTGATAGACCTGTGTGTAGATATTTCAAAGGCTGTGTCTACTTGGAACGGATGCATTTCAATCA
CAGGGATCTGGCAGCTAGAAATTCCTTGTTCGGTGAAGACTATACCAGTCCACGGATAGTGAAGATT
GGAGACTTTGGACTCGCCAGAGACATCTATAAAAATGATTACTATAGAAAGAGAGGGGAAGGCCTGCTCC
CAGTTCGGTGGATGGCTCCAGAAAGTTTATGATGGATGGAATCTTCACTACTCAATCTGATGTATGGTCTTT
TGGAAATCTGATTTGGGAGATTTAACTCTTGGTCATCAGCCTTATCCAGCTCATTCCAACCTTGATGTG
TTAAACTATGTGCAAACAGGAGGGAGACTGGAGCCACCAAGAAATGTCCTGATGATCTGTGGAATTTAA
TGACCCAGTGTGGGCTCAAGAACCCGACCAAGACCTACTTTTCATAGAATTCAGGACCAACTTCAGTT
ATTCAGAAATTTTTCTTAAATAGCATTATAAGTCCAGAGATGAAGCAAACAACAGTGGAGTCATAAAT
GAAAGCTTTGAAGGTGAAGATGGCGATGTGATTTGTTTGAATTCAGATGACATTATGCCAGTTGCTTTAA
TGGAAACGAAGAACCAGAGAGGGTTAACTATATGGTACTTGCTACAGAATGTGGCCAAGGTGAAGAAAA
GTCTGAGGGTCTCTAGGCTCCCAGGAATCTGAATCTTGTGGTCTGAGGAAAGAAGAGAAGGAACCACAT
GCAGACAAAGATTTCTGCCAAGAAAAACAAGTGGCTTACTGCCCTTCTGGCAAGCCTGAAGGCCTGAACT
ATGCTGTCTCACTCACAGTGGATATGGAGATGGGTCTGAT

ACGCGTACGCGGCCGCTCGAGCAGAAACTCATCTCAGAAGAGGATCTGGCAGCAAATGATATCCTGGATT
ACAAGGATGACGACGATAAGGTTTAA

Protein Sequence: >RC220652 representing NM_002944
 Red=Cloning site Green=Tags(s)

MKN IYCLIPKLVNFATLGLWISVVQCTVLNSCLKSCVTNLGQQLDLGTPHNLSEPCIQGGCHFWSVDQK
 NCALKCRESCVEGCSSAEGAYEEVLENADLPTAPFASSIGSHNMTLRWKSANFSGVKYIIQWKYALLG
 SWTYTKTVSRPSYVVKPLHPFTEYIFRVWIFTAQLQLYSPSPSYRTHPHGVPEAPLIRNISSSPDT
 VEVSWDPPQFPGGPILGYNLRLISKNQKLDAGTQRTSFQFYSTLNPNTIYRF SIAAVNEVGEGPEAESSIT
 TSSSAVQQEEQWLF.SRKTSLRKRSLKHLVDEAHCLRLDAIYHNITGISVDVHQQIVYFSEGTLIWAKKA
 ANMSDVSDLRIFYRGSGLISSISIDWL YQRMFYIMDELVCVCDLENCNIEEITPPSISAPQKIVADSYN
 GYVFYLLRDGIYRADLPVPSGRCAEAVRIVESCTLKDFAIKPAKRIIYFNDAQVFMSTFLDGSASHLI
 LPRIPFADVKSFACENNDLVTGKVI FQQDALSFNEFIVGCDLSHIEEFGFNLVIFGSSQLHPLPGR
 PQELSVLFGSHQALVQWKPPALAI GANVILISDIEELFELGPSAWQNWTYEVKVTQDPPEVTHIFLNIS
 GTMLNVPELQSAMKYKSVRASSPKRPGPWSEPSVGTTLVPASEPPFIMAVKEDGLWSKPLNSFGPGEFL
 SSDIGNVSDMDWYNNLSYYSDTKGDVFWLLNGTDISENYHLP SIAAGALAFEWLGHFLYWAGKTYVIQ
 RQSVLTGHTDIVTHVKLLVNDMVVDSVGGYLWTTLYSVESTRLNGESSLVLTQTPWFSGKKVIALTLDL
 SDGLLYWLVQDSQCIHL YTAVLRGQSTGDTTITEFAAWSTSEISQNALMYYSGRLFWINGFRIITQIEIG
 QKTSVSVLEPARFNQFTIIQTSLKPLPGNFSFTPKVIPDSVQESSFRIEGNASSFQILWNGPPAVDWGVV
 FYSVEFSAHSKFLASEQHSLPVFVEGLEPYALFNL SVTPYTYWKGPKTSLSLRAPETVPSAPENPRIF
 ILPSGKCCNKNEVVVEFRWNKPKHENGVLTKFEIFYNISNQSITNKTCEDWIAVNVTPSVMFQLEGMSP
 RCFIAFQVRAFTSKGPGPYADVVKSTTSEINPFPHLITLLGNKIVFLDMQDQNVVWTFSAERVISAVCYT
 ADNEMGYAEGDSL FLLHLHNRSSSELFQDSL VFDITVITIDWISRHL YFALKESQNGMQVFDVDLEHKV
 KYPREVKIHNRNSTIISFSVYPLL SRL YWTEVSNFGYQMFYYSII SHTLHRILQPTATNQNKRNQCSCN
 VTEFELSGAMAIDTSNLEKPLIYFAKAQEIWAMDLEGCQWRVITVPAMLAGKTLVSLTVGDLIYWIIT
 AKDSTQIYQAKKNGAIVSQVKALRSRHILAYSSVMQPFDPKAFSLASDTVEPTILNATNTSLTIRLPL
 AKTNLTWYGITSPTTYLVYYAEVNDRKNSSDLKYRILEFQDSIALIEDLQPFSTYMIQI AVKNYSDPL
 EHLPPGKEIWGKTNGVPEAVQLINTTVRSDTSLIISWRESHKPNGPKESVRYQLAISHLALIPETPLRQ
 SEFPNGRLTLLVTRL SGGNIYVLKVLACHSEEMWCTESHVPTVEMFNTPEKPYSLVPENTSLQFNWKAPL
 NVNLI RFWVELQWKYNEFYHVKTSCSQGPAYVCNITNLQPYTSYNVRVVVYKTGENSTSLPESFKTKA
 GVPNKP GIPKLL EGSKNISQWEKAEDNGCRITYYLEIRKSTSNNLQNQLRWKMTFNGSCSSVCTWKS
 NLKGI FQFRVVAANNLGFGEYSGISENII LVGDDFWIPETSFILTIIVGIFLVVTIPLTFVWHRRLNQK
 SAKEGVTVLINEDKEL AELRGLAAGVGLANACYAIHTLPTQEEIENLPAFPREKLT LRLLLGSGAFGEVY
 EGTAVDILGVGSGEIKVAVKTLKKGSTQEKIEFLKEAHLMSKFNHPNILKQLGVCLLNEPQYIILELME
 GGDLLTYLRKARMATFYGPLLTLVLDLVDLCVDISKGCVYLERMHFIHRDLAARNCLVSVKDYTSPRIVKI
 GDFGLARDIYKNDYYRKRGEGLLPVRWMAPESLMDGIFTTQSDVWSFGIL IWEILTLGHQYPYAHNSLDV
 LNYVQTGGRL EPPRNCDDLWNLMTQCWAQEPDQRPTFHRIQDQLQLFRNFFLNSIYKSRDEANNSGVIN
 ESFEGEDGDVICLNSDDIMPVALMETKNREGLNYMVLATECGQGEEKSEGPLGSQSESESCGLRKEEKEPH
 ADKDFCQEKQVAYCPSGKPEGLNYACLTHSGYGDGSD

TRTRPLEQKLISEEDLAANDILDYKDDDDKV

Chromatograms: https://cdn.origene.com/chromatograms/mg3471_c03.zip

Restriction Sites: SgfI-MluI

Cloning Scheme:


ACCN: NM_002944

ORF Size: 7041 bp

OTI Disclaimer: The molecular sequence of this clone aligns with the gene accession number as a point of reference only. However, individual transcript sequences of the same gene can differ through naturally occurring variations (e.g. polymorphisms), each with its own valid existence. This clone is substantially in agreement with the reference, but a complete review of all prevailing variants is recommended prior to use. [More info](#)

OTI Annotation: This clone was engineered to express the complete ORF with an expression tag. Expression varies depending on the nature of the gene.

Components: The ORF clone is ion-exchange column purified and shipped in a 2D barcoded Matrix tube containing 10ug of transfection-ready, dried plasmid DNA (reconstitute with 100 ul of water).

- Reconstitution Method:**
1. Centrifuge at 5,000xg for 5min.
 2. Carefully open the tube and add 100ul of sterile water to dissolve the DNA.
 3. Close the tube and incubate for 10 minutes at room temperature.
 4. Briefly vortex the tube and then do a quick spin (less than 5000xg) to concentrate the liquid at the bottom.
 5. Store the suspended plasmid at -20°C. The DNA is stable for at least one year from date of shipping when stored at -20°C.

Note: Plasmids are not sterile. For experiments where strict sterility is required, filtration with 0.22um filter is required.

RefSeq: [NM_002944.3](#)

RefSeq Size: 7368 bp

RefSeq ORF: 7044 bp

Locus ID: 6098

UniProt ID: [P08922](#)

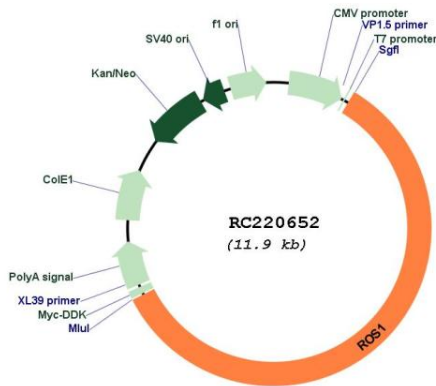
Cytogenetics: 6q22.1

Protein Families: Druggable Genome, Protein Kinase, Transmembrane

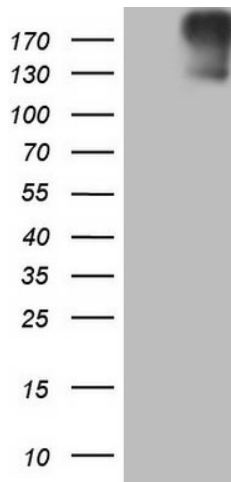
MW: 263.92 kDa

Gene Summary: This proto-oncogene, highly-expressed in a variety of tumor cell lines, belongs to the sevenless subfamily of tyrosine kinase insulin receptor genes. The protein encoded by this gene is a type I integral membrane protein with tyrosine kinase activity. The protein may function as a growth or differentiation factor receptor. [provided by RefSeq, Jul 2008]

Product images:



Circular map for RC220652



HEK293T cells were transfected with the pCMV6-ENTRY control (Cat# [PS100001], Left lane) or pCMV6-ENTRY ROS1 (Cat# RC220652, Right lane) cDNA for 48 hrs and lysed. Equivalent amounts of cell lysates (5 ug per lane) were separated by SDS-PAGE and immunoblotted with anti-ROS1 (Cat# [TA805804]).