

Product datasheet for RC220650

AFAF (EQTN) (NM_020641) Human Tagged ORF Clone

Product data:

Product Type:	Expression Plasmids
Product Name:	AFAF (EQTN) (NM_020641) Human Tagged ORF Clone
Tag:	Myc-DDK
Symbol:	AFAF
Synonyms:	AFAF; C9orf11; SPACA8
Mammalian Cell Selection:	Neomycin
Vector:	pCMV6-Entry (PS100001)
E. coli Selection:	Kanamycin (25 ug/mL)
ORF Nucleotide Sequence:	>RC220650 representing NM_020641 Red=Cloning site Blue=ORF Green=Tags(s)

TTTTGTAATACGACTCACTATAGGGCGCCGGGAATTCGTCGACTGGATCCGGTACCGAGGAGATCTGCC
GCC**CGGATCGCC**

ATGAATTTTATATTGTTTATTTTTATACCTGGAGTTTTTTCCTTAAAAAGTAGCACTTTGAAGCCTACTA
TTGAAGCATTGCCTAATGTGCTACCTTTAAATGAAGATGTTAATAAGCAGGAAGAAAAGAATGAAGATCA
TACTCCCAATTATGCTCCTGCTAATGAGAAAAATGGCAATTATTATAAGATATAAAACAATATGTGTT
ACAACACAAAATCAAAATGGCACTGAGTCTGAAATATCTGTGAGAGCCACAACCTGACCTGAATTTTGCTC
TAAAAACGATAAACTGTCAATGCAACTACATATGAAAAATCCACCATTGAAGAAGAAACAACCTACTAG
CGAACCTCTCATAAAAAATTTCAAAGTCAACCCCAAACGTGCCTGCATTTTGGACAATGTTAGCTAAA
GCTATAAATGGAACAGCAGTGGTCATGGATGATAAAGATCAATTTTCCACCAATTCCAGAGTCTGATG
TGAATGCTACACAGGGAGAAAATCAGCCAGATCTAGAGGATCTGAAGATCAAAAATATGCTGGGAATCTC
GTTGATGACCCTCCTCCTCTTTTGGTCTCTTGGCATTCTGTAGTGCTACACTGTACAACTGAGGCAT
CTGAGTTATAAAGTTGTGAGAGTCAGTACTCTGTCAACCCAGAGCTGGCCACGATGTCTTACTTTTCATC
CATCAGAAGGTGTTTCAGATACATCCTTTTCCAAGAGTGCAGAGAGCAGCACATTTTTGGGTACCACTTC
TTCAGATATGAGAAGATCAGGCACAAGAACATCAGAATCTAAGATAATGACGGATATCATTTCCATAGGC
TCAAATAATGAGATGCATGAAAACGATGAGTCGGTTACCCGG

ACGCGTACGCGGCCGCTCGAGCAGAAAACCTCATCTCAGAAGAGGATCTGGCAGCAAATGATATCCTGGATT
ACAAGGATGACGACGATAAGGTTTAA



[View online »](#)

Protein Sequence: >RC220650 representing NM_020641
Red=Cloning site Green=Tags(s)

MNFILFIFIPGVFSLKSSTLKPTIEALPNVLPLNEDVNKQEEKNEDHTPNYAPANEKNGNYKDIKQYVF
 TTQNPNGTESEISVRATTDLNFALKNDKTVNATTYEKSTIEEETTSEPSHKNIQRSTPNVPAFWTMLAK
 AINGTAVVMDDKDQLFHPIPESDVNATQGENQPDLEDLKIKIMLIGISLMTLLL FVLLAFCSATLYKLRH
 LSYKSCESQYSVNP ELATMSYFHPSEGVSDTSFSKSAESSTFLGTTSSDMRRSGTRTSESKIMTDIISIG
 SNNEMHENDES VTR

TRTRPLEQKLISEEDLAANDILDYKDDDDKV

Chromatograms: https://cdn.origene.com/chromatograms/mk8010_c10.zip

Restriction Sites: SgfI-MluI

Cloning Scheme:

Cloning sites used for ORF Shuttling:



ACCN: NM_020641

ORF Size: 882 bp

OTI Disclaimer: The molecular sequence of this clone aligns with the gene accession number as a point of reference only. However, individual transcript sequences of the same gene can differ through naturally occurring variations (e.g. polymorphisms), each with its own valid existence. This clone is substantially in agreement with the reference, but a complete review of all prevailing variants is recommended prior to use. [More info](#)

OTI Annotation: This clone was engineered to express the complete ORF with an expression tag. Expression varies depending on the nature of the gene.

Components: The ORF clone is ion-exchange column purified and shipped in a 2D barcoded Matrix tube containing 10ug of transfection-ready, dried plasmid DNA (reconstitute with 100 ul of water).

Reconstitution Method:

1. Centrifuge at 5,000xg for 5min.
2. Carefully open the tube and add 100ul of sterile water to dissolve the DNA.
3. Close the tube and incubate for 10 minutes at room temperature.
4. Briefly vortex the tube and then do a quick spin (less than 5000xg) to concentrate the liquid at the bottom.
5. Store the suspended plasmid at -20°C. The DNA is stable for at least one year from date of shipping when stored at -20°C.

RefSeq: [NM_020641.1](#), [NP_065692.1](#)

RefSeq Size: 1023 bp

RefSeq ORF: 885 bp

Locus ID: 54586

UniProt ID: [Q9NQ60](#)

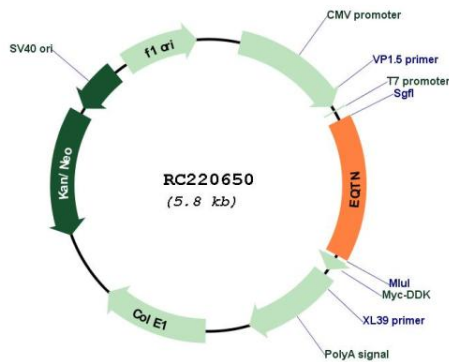
Cytogenetics: 9p21.2

Protein Families: Transmembrane

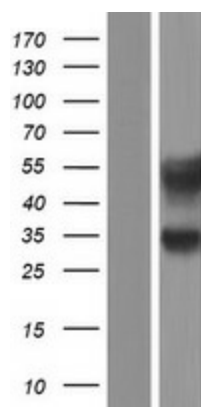
MW: 32.7 kDa

Gene Summary: Acrosomal membrane-anchored protein involved in the process of fertilization and in acrosome biogenesis.[UniProtKB/Swiss-Prot Function]

Product images:



Circular map for RC220650



Western blot validation of overexpression lysate (Cat# [LY412410]) using anti-DDK antibody (Cat# [TA50011-100]). Left: Cell lysates from untransfected HEK293T cells; Right: Cell lysates from HEK293T cells transfected with RC220650 using transfection reagent MegaTran 2.0 (Cat# [TT210002]).