

Product datasheet for **RC220648**

RNF157 (NM_052916) Human Tagged ORF Clone

Product data:

Product Type:	Expression Plasmids
Product Name:	RNF157 (NM_052916) Human Tagged ORF Clone
Tag:	Myc-DDK
Symbol:	RNF157
Mammalian Cell Selection:	Neomycin
Vector:	pCMV6-Entry (PS100001)
E. coli Selection:	Kanamycin (25 ug/mL)



[View online »](#)

ORF Nucleotide
Sequence:

>RC220648 representing NM_052916
Red=Cloning site Blue=ORF Green=Tags(s)

TTTTGTAATACGACTCACTATAGGGCGGCCGGGAATTCGTCGACTGGATCCGGTACCGAGGAGATCTGCC
GCCGCGATCGCC

ATGGGGCCCTGACGAGCCGGCAGCACGCGGGCTGGAGGAGGTGGACATCCCGTCTAATCCGTGTACC
GCTACCCGCCAAGTCCGGAAGCTATTTGGCCAGCCACTTCATTATGGGAGGAGAGAAGTTGACTCAAC
TCATCCTGAAGGTTACCTGTTTGGAGAGAACAGCGATCTGAACTTTCTGGGGAACAGACCAGTTGTGTTT
CCTTACGCGCCCCACCTCCCAAGAACCCTGGAAGACTCTGAGAAGCCTGGTCAATATCCGAAAGGACA
CACTGAGGCTCGTCAAATGTGCTGAGGAAGTGAAGAGCCCTGGAGAAGAGGCCAGTAAAGCTAAAGTCCA
CTACAATGTTGAGTTCACCTTTGACACAGATGCTCGGGTAGCCATCACCATCTATTACCAGGCCACGGAA
GAGTTCAGAATGGTATTGCCAGCTACATCCCAAAGACAACAGCCTCCAGTCGGAGACTGTGCAGTACA
AGCGAGGAGTGTGCAGCAGTTCTGCCTGCCCTCCACACCGTGGATCCCTCCGAGTGGCCGAAGAGGA
GCTTGGCTTTGATTTAGACCGAGAAGTTTACCCTCTAGTGGTACATGCCGTGGTGGATGAAGGAGACGAG
TATTTTGGCCATTGCCATGTACTGCTGGTACTTTTGGAGAAGCACACAGATGGAACCTTCTGTGCAAGC
CCCTCAAACAGAAACAAGTAGTAGACGGGTGACGTACCTCCTTCCAGGAGATCTATGGAATTGAAAACAA
GTACAACACACAAGATTCTAAGGTGGCTGAAGACGAAGTGAAGTGAACAGTGCCGAGTGTGTGGTGTGT
CTCTCGGATGTCCGGGACACCTTGATTCTGCCCTGTCCGACCTCTGCCTCTGTAACACCTGTGCAGACA
CGCTGCGTACCAGGCCAACCTGCCCATCTGCCGACTGCCCTTCCGGGCACTGCTTCAGATCCGAGC
CATGAGGAAAAATTGGGCCCTTGTCCCAACCAGCTTAAACCCATCATCTCATCCAGACATCTGAC
TCTGAAGAGCATCCATCCTCAGAGAATATCCACCAGGCTATGAAGTAGTATCTCTTCTGGAGGCCCTCA
ACGGGCCCTCACCCGTCGCCAGCAGTTCCTCCACTTCACGTGCTTGGAGATGGCCACCTCTCAGGAAT
GCTCCCTTCATATGGCAGTGTGGCCACCTGCCCCCGTCAGGACGATCTCGCCTTTGACCGCCTGTCT
GACAGCAGCAGTCAGGGACTCAAACCTCAAAAAGAGTCTCTCAAATCCACTTCCCAAACTCTTCCGTGC
TGCATGAAGAGGAAGATGAGCATTCTGCAGCGAGTCGGAGACACAGCTCTCTCAGAGACCGTCGGTTCA
GCATCTCGGAGAGGAATGTGGTGTGACTCCAGAAAGTGAAGTCTCACCTTGTGTCATCTGGAGCTATT
GACCAGTCGTCTTGCACAGGGACGCTCTGTCCACTATTTCTCCCAAGAGCCCTGCCAGCAGCA
GCTTGGCCAGTCTGTGCATGTCCATGGCATCTCCAGATCAGCACTGACACCGTCTCTCCATGTCTGG
CTCCTACATCGCCCTGGCACTGAAGAGGAGGGAGAGGCTCTCTTCCCCCAGCCTGCCAGCAGGGCC
CCCTCAGAAGAAGGAGAGGGGCTGCCAGCGGAGTCTCCAGACAGCAACTTGCTGGCCTCCAGCTGGAG
AGCAGGATGCAGAGGGAATGATGTTATAGAGGAAGAGGATGGATCACCCACGCAGGAAGGCCAGAGGAC
GTGCGCATTTCTAGGTATGGAGTGTGACAATAACAATGACTTTGACATCGCAAGCGTGAAAGCACTGGAC
AATAAGCTGTGCTCTGAGGTCTGCTTACCTGGTGCCTGGCAGGCTGATGACAATGCCGTGAGTGGAAATG
CCCAGCGCCGGCCTTGTATCCAGCAGCCTGGAGGACTCTGAGACGAGGCCCTGTGTGTGGGCCCTTT
GGCTGTC

ACGCGTACGCGGCCGCTCGAGCAGAACTCATCTCAGAAGAGGATCTGGCAGCAATGATATCCTGGATT
ACAAGGATGACGACGATAAGGTTTAA

Protein Sequence: >RC220648 representing NM_052916
Red=Cloning site Green=Tags(s)

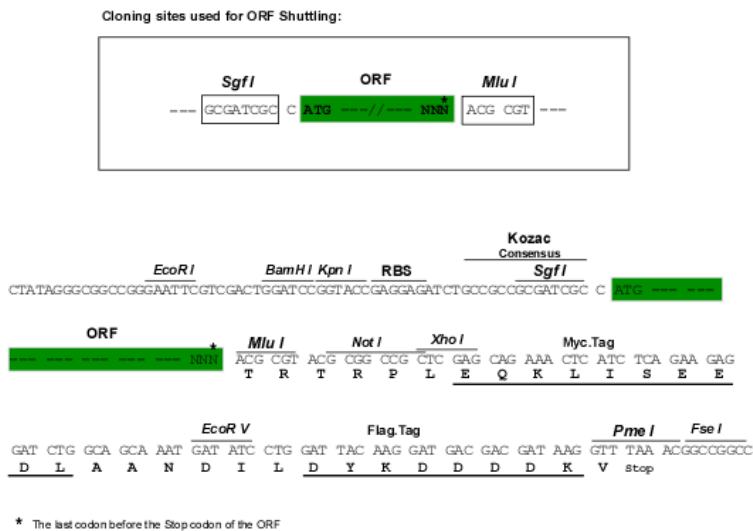
MGALTSRQHAGVEEVDIPSNSVYRPPKSGSYFASHFIMGGEKFDSTHPEGYLFGENSDLNFLGNRPVVV
 PYAAPPQEPVKTLRSLVNIRKDTLRLVKCAEEVKSPGEEASKAKVHYNVEFTFDTDARVAITIIYQATE
 EFQNGIASYIPKDNSLQSETVQYKRGVCQFCLPSHTVDPSEWAEELGFDLDREVYPLVHAVVDEGDE
 YFGHCHVLLGTFEKHTDGTFCVKPLKQKQVVDGVSYLLQEIYGIENKYNTQDSKVAEDEVSDNSAECVVC
 LSDVRDTLILPCRHLCLNTCADTLRYQANNCPICRLPFRALLQIRAMRKKLGPLSPTSFNPIISSQTS
 SEEHPSENIPPGYEVVSLLEALNGPLTPSPAVPPLHVLGDGHLSGMLPSYSGDGLPVPRTISPLDRLS
 DSSSQGLKLLKSLKSTSQNSSVLHEEEDHSCSESETQLSQRPSVQHLGEECGVTPESENLTLSSSGAI
 DQSSCTGTPLSSTISSPEGPASSSLAQSVSMASQISTDTVSSMSGYSIAPGTEEEGEALSSPQPASRA
 PSEEGGLPAESPDSNFAGLPAGEQDAEGNDVIEEEDGSPTEGQRTCAFLGMECDNNDFDIASVKALD
 NKLCEVCLPGAWQADDAVSRNAQRRLSSSSLEDETRPCVWGPLAV

TRTRPLEQKLISEEDLAANDILDYKDDDDKV

Chromatograms: https://cdn.origene.com/chromatograms/mk8042_d04.zip

Restriction Sites: SgfI-MluI

Cloning Scheme:



ACCN: NM_052916

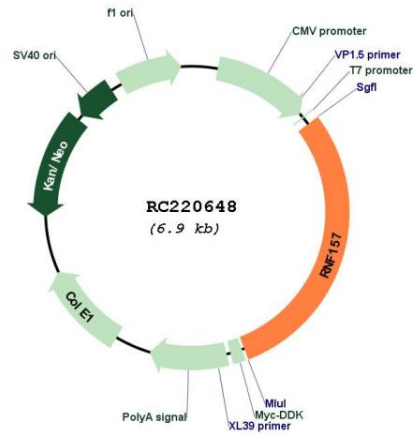
ORF Size: 2037 bp

OTI Disclaimer: The molecular sequence of this clone aligns with the gene accession number as a point of reference only. However, individual transcript sequences of the same gene can differ through naturally occurring variations (e.g. polymorphisms), each with its own valid existence. This clone is substantially in agreement with the reference, but a complete review of all prevailing variants is recommended prior to use. [More info](#)

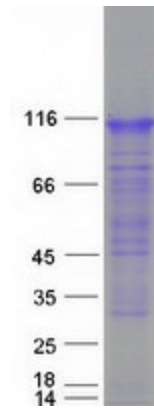
OTI Annotation: This clone was engineered to express the complete ORF with an expression tag. Expression varies depending on the nature of the gene.

Components:	The ORF clone is ion-exchange column purified and shipped in a 2D barcoded Matrix tube containing 10ug of transfection-ready, dried plasmid DNA (reconstitute with 100 ul of water).
Reconstitution Method:	<ol style="list-style-type: none">1. Centrifuge at 5,000xg for 5min.2. Carefully open the tube and add 100ul of sterile water to dissolve the DNA.3. Close the tube and incubate for 10 minutes at room temperature.4. Briefly vortex the tube and then do a quick spin (less than 5000xg) to concentrate the liquid at the bottom.5. Store the suspended plasmid at -20°C. The DNA is stable for at least one year from date of shipping when stored at -20°C.
RefSeq:	NM_052916.3
RefSeq Size:	3570 bp
RefSeq ORF:	2040 bp
Locus ID:	114804
UniProt ID:	Q96PX1
Cytogenetics:	17q25.1
Protein Families:	Druggable Genome
MW:	73.4 kDa
Gene Summary:	E3 ubiquitin ligase that ubiquitinates APBB1 for its degradation by the proteasome and thus prevents apoptosis and promotes survival of neurons (PubMed:25342469). Has a dual role in neurons as it is also required for dendrite growth and maintenance for which its ligase activity is not critical (PubMed:25342469). May act as a scaffold molecule to regulate this process (PubMed:25342469). Acts as a downstream effector of the interconnected PI3K and MAPK signaling pathways and thus participates in the regulation of the cell cycle (PubMed:28655764).[UniProtKB/Swiss-Prot Function]

Product images:



Circular map for RC220648



Coomassie blue staining of purified RNF157 protein (Cat# [TP320648]). The protein was produced from HEK293T cells transfected with RNF157 cDNA clone (Cat# RC220648) using MegaTran 2.0 (Cat# [TT210002]).