

Product datasheet for RC220641

NFE4 (NM_001085386) Human Tagged ORF Clone

Product data:

Product Type: Expression Plasmids
Product Name: NFE4 (NM_001085386) Human Tagged ORF Clone
Tag: Myc-DDK
Symbol: NFE4
Synonyms: NF-E4
Mammalian Cell Selection: Neomycin
Vector: pCMV6-Entry (PS100001)
E. coli Selection: Kanamycin (25 ug/mL)
ORF Nucleotide Sequence: >RC220641 representing NM_001085386
 Red=Cloning site Blue=ORF Green=Tags(s)

TTTTGTAATACGACTCACTATAGGGCGGCCGGAATTCGTCGACTGGATCCGGTACCGAGGAGATCTGCC
 GCCCGATCGCC

CTGGATCCGGTACCGAGGAGATCTGCCCGCGGATCGCCCTGCCTCGTGTGTCTGTTGGCACACTCTCA
 AGAGTTTGAACGGATAACAAGAATCTTTCATCTGGTGCCGAAACCCGGGAGGGGCTCCGGTCTTCGTC
 CGTGGACCTACCCCTCCGCCAGAAAGCAGGCCACAGCAGCCGGACAAAGGAAGCTCCTCAGCCTCCAG
 TTGCTTCTGTGCATGCACATCAGTCACTGATCTCACCTACTGGGGCCCTGCAGGCCATGGGGCCACAG
 CTCACACAGAAGCCTCCTAGCAATCCACCTCCACCTGGTGCCTGCTCAAGTGGGCAATGAAGGCCAC
 TGGCCACACAATGCCAAACCCAGGTAACCCACGAGGCCATGCCCCCTCTGCGGAGGACCCCACTGGA
 AGTTGGACTGTGAGCGGCCCTGCAAGGACCACCCCATCCCTTCTGAGCCAATCAAACCTCCTACTC
 GGATCTCGTCAGCCTTGCCGCTGAAGACTGATAGTGCCTTGAACAGACACCCAGCAACTACCATCGCT
 TCATCTGAGCCAAGGG

ACGCGTACGCGGCCGCTCGAGCAGAACTCATCTCAGAAGAGGATCTGGCAGCAATGATATCCTGGATT
 ACAAGGATGACGACGATAAGGTTTAA

Protein Sequence: >RC220641 representing NM_001085386
 Red=Cloning site Green=Tags(s)

LDPVPRRSAAAIALPRVVCWHTLKSLNGYKNLSSGAETREGLRSSSPVDLPLRPRKQATAAGQRKLLSLQ
 LLLCACTSVTDLTYWGPAGHGATAPHRSLLAIDLHLVPASSAAMKATGPHNAQTQVNPGRGHAPSAEDPTG
 SWTVSGPKDHPHPFLSQSNPPTRISSALPLKTDSALEQTPQQLPSLHLSQG

TRTRPLEQKLISEEDLAANDILDYKDDDDKV



[View online »](#)

Chromatograms: https://cdn.origene.com/chromatograms/mk8042_b04.zip

Restriction Sites: SgfI-MluI

Cloning Scheme:



ACCN: NM_001085386

ORF Size: 576 bp

OTI Disclaimer: The molecular sequence of this clone aligns with the gene accession number as a point of reference only. However, individual transcript sequences of the same gene can differ through naturally occurring variations (e.g. polymorphisms), each with its own valid existence. This clone is substantially in agreement with the reference, but a complete review of all prevailing variants is recommended prior to use. [More info](#)

OTI Annotation: This clone was engineered to express the complete ORF with an expression tag. Expression varies depending on the nature of the gene.

Components: The ORF clone is ion-exchange column purified and shipped in a 2D barcoded Matrix tube containing 10ug of transfection-ready, dried plasmid DNA (reconstitute with 100 ul of water).

Reconstitution Method:

1. Centrifuge at 5,000xg for 5min.
2. Carefully open the tube and add 100ul of sterile water to dissolve the DNA.
3. Close the tube and incubate for 10 minutes at room temperature.
4. Briefly vortex the tube and then do a quick spin (less than 5000xg) to concentrate the liquid at the bottom.
5. Store the suspended plasmid at -20°C. The DNA is stable for at least one year from date of shipping when stored at -20°C.

RefSeq Size: 967 bp

RefSeq ORF: 540 bp

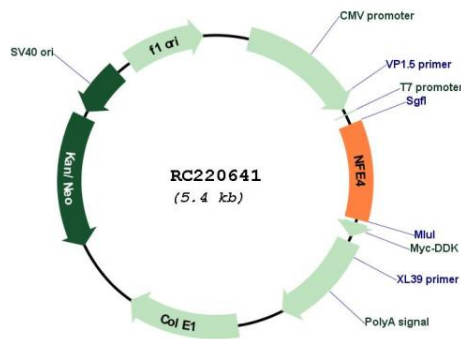
Locus ID: 58160

Cytogenetics: 7q22.1

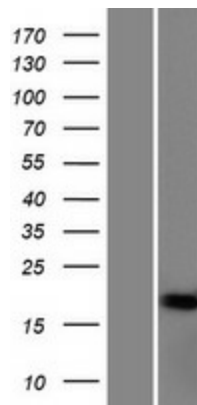
MW: 20.33 kDa

Gene Summary: The erythroid-specific protein encoded by this gene, and the ubiquitous transcription factor CP2, form the stage selector protein (SSP) complex, which is involved in preferential expression of the gamma-globin genes in fetal erythroid cells. Alternate use of an in-frame upstream non-AUG (CUG) translation initiation codon, and a downstream AUG codon, results in two isoforms. While the long isoform (22 kDa) acts as an activator, the short isoform (14 kDa) has been shown to repress gamma-globin gene expression. This gene is located in an intron of the FBXL13 gene on the opposite strand. [provided by RefSeq, Jul 2008]

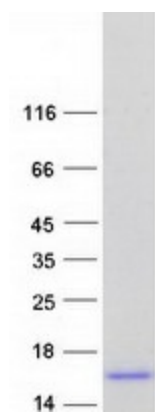
Product images:



Circular map for RC220641



Western blot validation of overexpression lysate (Cat# [LY421283]) using anti-DDK antibody (Cat# [TA50011-100]). Left: Cell lysates from untransfected HEK293T cells; Right: Cell lysates from HEK293T cells transfected with RC220641 using transfection reagent MegaTran 2.0 (Cat# [TT210002]).



Coomassie blue staining of purified NFE4 protein (Cat# [TP320641]). The protein was produced from HEK293T cells transfected with NFE4 cDNA clone (Cat# RC220641) using MegaTran 2.0 (Cat# [TT210002]).