

## Product datasheet for RC220640

### STARD13 (NM\_178006) Human Tagged ORF Clone

#### Product data:

Product Type:	Expression Plasmids
Product Name:	STARD13 (NM_178006) Human Tagged ORF Clone
Tag:	Myc-DDK
Symbol:	STARD13
Synonyms:	ARHGAP37; DLC2; GT650; LINC00464
Mammalian Cell Selection:	Neomycin
Vector:	pCMV6-Entry (PS100001)
E. coli Selection:	Kanamycin (25 ug/mL)
ORF Nucleotide Sequence:	>RC220640 representing NM_178006 Red=Cloning site Blue=ORF Green=Tags(s)

TTTTGTAATACGACTCACTATAGGGCGCCGGGAATTCGTCGACTGGATCCGGTACCGAGGAGATCTGCC  
GCC**CGATCGCC**

ATGTTTCAGTCAGGTGCCAGGACCCAGCCTCAGGCTGCTACTACCTAAATTCATGACACCTGAGGGCC  
AGGAGATGTAAGTGGATTTGATCAGACTACAAGACGCTCTCCTTACAGGATGAGCCGATTCTAGCAGC  
CCATCAGCTAGTACTAAAATTCACAAGAAATGAGGCAAAAGAAGCATGTGACTGGCTCCGTGCTGCC  
GGGTTCCCGCAATACGCTCAGTTATATGAGGATCACAATTTCCATCAACATTGTGGCTGTCAAGATG  
ATCATGATTTTCTGAAAAGGACCTTGTAGAACCTCTTTCAGACGACTAAATACGTTGAACAAGTGTGC  
CTCAATGAAACTTGATGTGAACCTCAAAGGAAAAGGGTGACGACTCCGATGAGGAAGATCTTTGTATC  
AGCAACAATGGACTTTCAAAGAACCAGTCGACGGTGGTCTCGTGTGGACGACCTCTACACGCTGCTCC  
CTCGAGGAGACAGAAATGGGTACCCGGGAGGCACGGGGATGAGGAACACGACCAGCAGTGAGAGCGTCT  
CACAGACCTGAGCGAGCCTGAGGTCTGCTCCATTCACAGCGAAAGCAGTGGAGGCAGCGACAGTCCGAGC  
CAGCCGGGCCAGTGTGTACAGACAACCCGGTCTGCTGGATGCCCACTCGTCAGCAGCAGCCTCCAC  
AGCCCCCAGAGATGCTCAACCACCCCTTCCACCCAAAGATGAGAAGCCACGAGGGCTAGGGCCAA  
ATCATTTTTGAAACGCATGAAAACACTCCGAGGGAAGGGAGCCCACGGGAGGCATAAGGGGTCTGGGCG  
ACAGTTGGCTGGTGTGATCAGTGGGCCCATGTTGCAGCAGGAGCCAGAGTCTTTAAGGCTATGCAGTGCA  
TCCAAATACCAAATGGAGATCTCCAGAATTCGCCGCCACCTGCCTGCAGAAAAGGGCTCCCATGCTCTGG  
CAAGTTCAGTGGCGAGAGCAGCCGTCGGAGCACAGCAGCAGCGGGTGAGCACGCCCTGCCTGAAGGAA  
CGCAAGTGCCACGAGGCCAAAGCGCGGGGGCATGTAAGTGGAGGACCTAGATGTGCTGGCGGGGACAG  
CACTGCCGGATGCAGGGGACCAAGCCGTATGCATGAGTTTCACTCCCAAGAGAATTTGGTGGTGCATAT  
TCCCAAGGATCACAACCAGGAACATTCACCAAGGCATTTCTATTGAAAGCCTCTCTCCACAGATAGT  
AGCAATGGGGTTAATTGGAGGACCGGTAGCATCTCCCTGGGCAGAGAGCAGGTCCCTGGTCCAGGGAGC  
CCCGGCTCATGGCGTCTGCCACAGAGCCAGCCGAGTCAGTATCTATGACAATGTCCCTGGCTCCCATCT  
GTATGCCAGCACAGGAGATCTTTGGACTTGGAGAAAGATGACCTTTTCCCTCACTTGGATGACATTCTG



[View online »](#)

CAGCATGTCAATGGGCTCCAAGAGGTAGTCGATGACTGGTCCAAAGATGTCTTGCCTGAACTGCAAACCT  
 ATGATACATTGGTTGGGGAACCTGGCTTATCCACCTTTCCATCTCCTAATCAGATCACCTTAGATTTTGA  
 AGGTAACCTCTGTCTCAGAAGGTCGGACGACACCCAGTGATGTGAAAGAGATGTAACATCTCTTAATGAA  
 TCTGAGCCTCTGGGGTCAGAGACAGGAGGGATTCTGGTGTAGGGGCTCTCTGACCAGGCCAAACAGGC  
 GACTCCGATGGAACAGTTTCCAGCTGTCGCACCAGCCCCGGCCCGCCAGCATCGCCCCACATCAGCAG  
 CCAGACGGCCAGCCAGCTGAGCCTGCTCCAGCGCTTCTCACTGCTCCGCCCTCAGGCCATCATGGAGAAG  
 CACTCCATGTCCAACAAGCACGGCTGGACATGGTCAGTTCCAAAGTTCATGAAGAGGATGAAAGTCCCCG  
 ACTACAAAGACAAGGCTGTCTTTGGCGTTCCTCTCATAGTCCACGTCCAAAGAAGCGGACAGCCCCCTGCC  
 TCAAAGTATTCAGCAAGCACTGAGATATCTACGCAGCAACTGCCTCGATCAGGTGGGTCTTTTTTCGCAA  
 TCAGGAGTGAAGTCTCGAATCCATGCCCTTCGCCAAATGAATGAAAACCTCCCTGAGAACGTCAACTATG  
 AAGACCAGTCTGCTTATGATGTGGCGGATATGGTGAACAGTCTTCCGGGACCTCCCTGAGCCTTTTT  
 CACCAACAAGCTCAGTGAGACCTTTCTCCATATCTATCAGTATGTCTCCAAAGAGCAGCGGCTGCAGGCC  
 GTGCAGGCTGCCATCCTGCTACTGGCCGATGAGAACAGGGAGGCTCTGCAGACGCTTTGTGTTTCTGA  
 ACGACGTCGTCAACTTGGTGAAGAGAATCAGATGACGCCATGAACCTGGCAGTGTCTGGCCCCCTC  
 CCTTTTTCATCTAATTTATTGAAGAAAGAAAGCTCTCCACGAGTCATACAGAAGAAATATGCCACTGGG  
 AAGCCAGATCAAAGGACCTCAACGAGAATCTGGCAGCAGCTCAGGGGCTAGCGCACATGATCATGGAAT  
 GCGACAGACTTTTTGAGGTTCCACACGAGTTGGTGGCCAGTCTCGTAACTCGTATGTGGAGGCTGAGAT  
 CCACGTGCCAACCTGGAAGAATTGGGGACACAGCTGGAGGAGAGTGGGGCAACTTTCCACACTTACCTG  
 AACCATCTCATCCAGGGCCTCCAGAAAGAAGCCAAAGGAGAAGTTCAAAGGATGGGTACGTGCTCCAGCA  
 CGGACAATACAGATCTTGCTTTCAAAGGTGGGCGACGGGAACCCGCTGAAGCTGTGGAAGGCTTCTGT  
 GGAGGTGGAAGCACCCCTCAGTGGTCTGAACCGGTGCTGAGAGAGCGCCACCTGTGGGACGAGGAC  
 TTTGTGCAGTGAAGGTTGTGGAACCTTAGACAGGCAACAGAGATCTACCAGTATGTCTGAACAGCA  
 TGGCTCCCCATCCTCCAGAGACTTTGTGTTCTCAGGACCTGGAAAACCTGATTTGCCAAAGGAATGTG  
 TACCCTGGTGTCCCTCTCCGTGGAGCATGAGGAAGCCAGCTCCTGGGTGGTGTGCGAGCAGTGGTGTG  
 GACTCGCAGTACTTGATAGAACCGTGTGGCTCTGGCAAGTCAAGACTGACTCACATCTGCAGGATAGACC  
 TGAAAGGTCACCTCCCAAGATGGTACAGCAAAGGCTTTGGACATCTGTGTGCAGCAGAAGTTGCCAGGAT  
 TAGAAACTCTTTCCAGCCCTCATTGCTGAGGGCCAGAAAATAAATC

ACGCGTACGCGGCCGCTCGAGCAGAAACTCATCTCAGAAGAGGATCTGGCAGCAAATGATATCCTGGATT  
 ACAAGGATGACGACGATAAGGTTTAA

**Protein Sequence:**

>RC220640 representing NM\_178006  
 Red=Cloning site Green=Tags(s)

MFSQVPRTPASGCYYLNSMTPGQEMYLRFDQTTRRSPYRMSRILARHQLVTKIQQEIEAKEACDWLRAA  
 GFPQYAQLYEDSQFPIINIVAVKNDHDFLEKDLVEPLCRRNLNLKCSMKLDVNFQRKKGDDSDDEDLCI  
 SNKWTFFQRTSRRWSRVDDLTYLLPRGDRNGSPGGTGMRNTTSSSEVL TDLSEPEVCSIHSESSGSDSRS  
 QPGQCCTDNPVMLDAPLVSSSLPQPPRDVLNHPFHPKNEKPTRARAKSFLKRMETLRGKGAHGRHKGSGR  
 TGGLVISGPMLQQEPESFKAMQCIQIPNGDLQNSPPPACRKLPCSGKSSGESSPSEHSSSGVSTPCLKE  
 RKCHEANKRGGMYLEDLDVLAGTALPDAGDQSRMHEFHSQENLVVHIPKDHKPGTFPKALSIESLSPTDS  
 SNGVNWRTGSISLGREQVPGAREPRLMASCHRASRVSIYDNVPGSHLYASTGDLLDLEKDDLFPHLDDIL  
 QHVNGLQEVVDDWSKDVLPQLQTHDTLVGEPGLSTFPSPNQITLDFEGNSVSEGRTPSPDVERDVTSLNE  
 SEPPGVRDRRDSGVGASLTRPNRRLRWNSFQLSHQPRPAPASPHISSQTASQLSLLQRFSLRLTAIMEK  
 HSMSNKHGWTWSVPKFMKRMKVPDYKDKAVFGVPLIVHVQRTGQPLPQSIQQALRYLRSNCLDQVGLFRK  
 SGVKSRIHALRQMNENFPENVNYEDQSAYDVADMVKQFFRDLPEPLFTNKLSETFLHIYQYVSKEQRLQA  
 VQAAIILLADENREVLQTLCLFLNDVVNLVEENQMPMNLAVCLAPSLFHLNLLKKESSPRVIQKKYATG  
 KPDKDLNENLAAAQGLAHMIMECDRLFEVPHELVAQSRNSYVEAEIHVPTLEELGTQLEESGATFHTYL  
 NHLIQGLQKEAKEKFKGWVTCSSDNTDLAFKKGVDGNPLKWKASVEVEAPPSVVLNRVLRERHLWDED  
 FVQWKVVEITDRQTEIYQYVLSMAPHPSRDFVVLRTWKTDLPGMCTLVSLSVEHEEAQLLGGVRAVVM  
 DSQYLIEPCGSGKSRLTHICRIDLKGHSPEWYSKGFGLCAAEEVARIRNSFQPLIAEGPETKI

TRTRPLEQKLI SEEDLAANDILDYKDDDDKV

**Chromatograms:** [https://cdn.origene.com/chromatograms/mk6683\\_h08.zip](https://cdn.origene.com/chromatograms/mk6683_h08.zip)  
**Restriction Sites:** SgfI-MluI  
**Cloning Scheme:**



**ACCN:** NM\_178006

**ORF Size:** 3339 bp

**OTI Disclaimer:** The molecular sequence of this clone aligns with the gene accession number as a point of reference only. However, individual transcript sequences of the same gene can differ through naturally occurring variations (e.g. polymorphisms), each with its own valid existence. This clone is substantially in agreement with the reference, but a complete review of all prevailing variants is recommended prior to use. [More info](#)

**OTI Annotation:** This clone was engineered to express the complete ORF with an expression tag. Expression varies depending on the nature of the gene.

**Components:** The ORF clone is ion-exchange column purified and shipped in a 2D barcoded Matrix tube containing 10ug of transfection-ready, dried plasmid DNA (reconstitute with 100 ul of water).

- Reconstitution Method:**
1. Centrifuge at 5,000xg for 5min.
  2. Carefully open the tube and add 100ul of sterile water to dissolve the DNA.
  3. Close the tube and incubate for 10 minutes at room temperature.
  4. Briefly vortex the tube and then do a quick spin (less than 5000xg) to concentrate the liquid at the bottom.
  5. Store the suspended plasmid at -20°C. The DNA is stable for at least one year from date of shipping when stored at -20°C.

**RefSeq:** [NM\\_178006.2](#)

**RefSeq Size:** 5886 bp

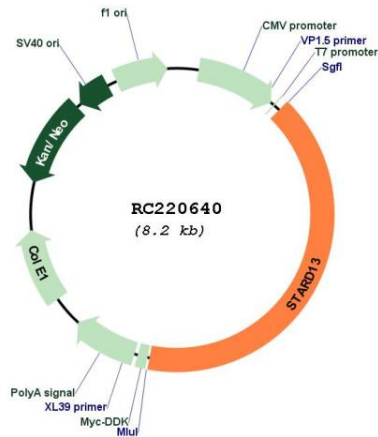
**RefSeq ORF:** 3342 bp

**Locus ID:** 90627

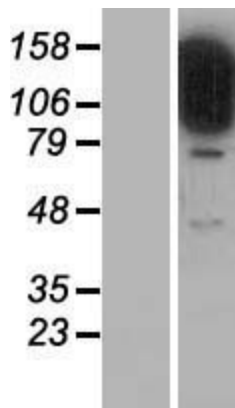
UniProt ID: [Q9Y3M8](#)  
 Cytogenetics: 13q13.1-q13.2  
 MW: 124.8 kDa

**Gene Summary:** This gene encodes a protein which contains an N-terminal sterile alpha motif (SAM) for protein-protein interactions, followed by an ATP/GTP-binding motif, a GTPase-activating protein (GAP) domain, and a C-terminal STAR-related lipid transfer (START) domain. It may be involved in regulation of cytoskeletal reorganization, cell proliferation, and cell motility, and acts as a tumor suppressor in hepatoma cells. The gene is located in a region of chromosome 13 that is associated with loss of heterozygosity in hepatocellular carcinomas. Alternatively spliced transcript variants encoding different isoforms have been described for this gene. [provided by RefSeq, Aug 2011]

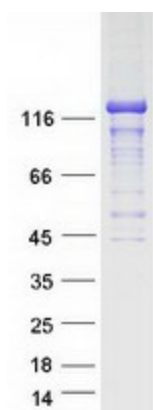
**Product images:**



Circular map for RC220640



Western blot validation of overexpression lysate (Cat# [LY406044]) using anti-DDK antibody (Cat# [TA50011-100]). Left: Cell lysates from untransfected HEK293T cells; Right: Cell lysates from HEK293T cells transfected with RC220640 using transfection reagent MegaTran 2.0 (Cat# [TT210002]).



Coomassie blue staining of purified STARD13 protein (Cat# [TP320640]). The protein was produced from HEK293T cells transfected with STARD13 cDNA clone (Cat# RC220640) using MegaTran 2.0 (Cat# [TT210002]).