

Product datasheet for **RC220639**

C11orf20 (TEX40) (NM_001039496) Human Tagged ORF Clone

Product data:

Product Type:	Expression Plasmids
Product Name:	C11orf20 (TEX40) (NM_001039496) Human Tagged ORF Clone
Tag:	Myc-DDK
Symbol:	C11orf20
Synonyms:	C11orf20; TEX40
Mammalian Cell Selection:	Neomycin
Vector:	pCMV6-Entry (PS100001)
E. coli Selection:	Kanamycin (25 ug/mL)
ORF Nucleotide Sequence:	>RC220639 representing NM_001039496 Red=Cloning site Blue=ORF Green=Tags(s)

TTTGTGTAATACGACTCACTATAGGGCGGCCGGAATTCGTCGACTGGATCCGGTACCGAGGAGATCTGCC
 GCC**CGATCGCC**

ATGGAGGAAAAGCCTTCGAAAGTGTGCTCAAGTCTTCGACCGCCAAGGCTCGGACGAGGAGAGCGTGC
 ATAGCGACACTCGGGACCTGTGGACCACGACCAGCTGTCCAGGCACAGCTGAACATGCCGCTGTCCGA
 GGTCTGCGAGGGCTTCGACGAGGAGGGCCGCAACATTAGCAAGACCCGCGGTGGACAGCCGGGGCGG
 GGCTCGTTGGACGAGGGTACAAGGCCAGCCACAAGCCGGAGGAAGTGGACGAGCAGCGCTGGTGGAGC
 TGGAGTTGCACCGCGGCAGCTCCATGGAATCAATCTGGGGGAGAAGGACTGCATCCCAGATCGAGGC
 CGAAAAGTCTTCTCAATGTCATCACTCAATATTGCGAAGCACATGCCCCATCGAGCCTACTGGGCAGAG
 CAGCAGAGCAGGCTGCCACTGCCCTGATGGAAGTCAATGGAAGTGAAGCTCTGGAATCCTCACCAGAG
 CCCTCCGGAGCTACCAAGTATAGGATCGGCAGGGACCACTTCTGACTAAGGAGCTGCAGCGATACATCGA
 AGGGCTCAAGAAGCGCCGAGCAAGAGGCTGTACGTGAAT

ACGCGTACGCGGCCGCTCGAGCAGAACTCATCTCAGAAGAGGATCTGGCAGCAAATGATATCCTGGATT
 ACAAGGATGACGACGATAAGGTTTAA

Protein Sequence:	>RC220639 representing NM_001039496 Red=Cloning site Green=Tags(s)
-------------------	---

MEEKPSKVSLSKSSDRQGSDEESVHSDTRDLWTTTSLQAQLNMPLSEVCEGFDEEGRNISKTRGWHSPGR
 GSLDEGYKASHKPEELDEHALVELEHRGSSMEINLGEKDTASQIEAEKSSSMSSLNIAKHMPHRAYWAE
 QQSRLPLPLMELMENEALILTKALRSYQLGIGRDHFLTKELQRYIEGLKKRRSKRLVYN

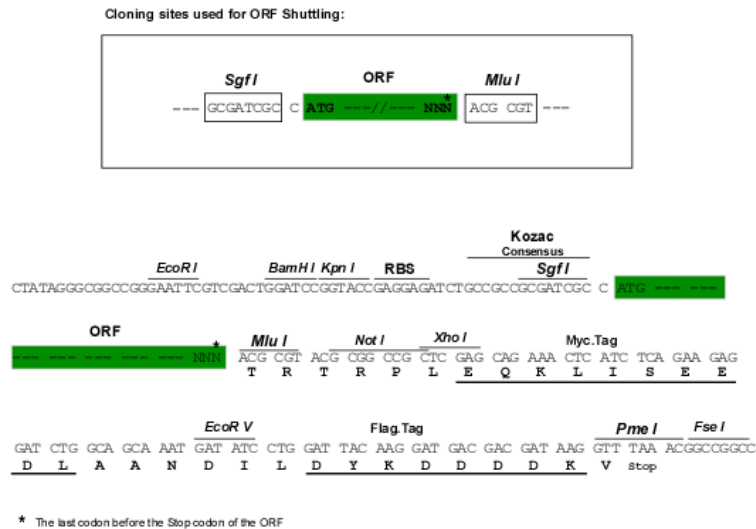
TRTRPLEQKLISEEDLAANDILDYKDDDDKV


[View online »](#)

Chromatograms: https://cdn.origene.com/chromatograms/mk8042_c06.zip

Restriction Sites: SgfI-MluI

Cloning Scheme:



ACCN: NM_001039496

ORF Size: 600 bp

OTI Disclaimer: The molecular sequence of this clone aligns with the gene accession number as a point of reference only. However, individual transcript sequences of the same gene can differ through naturally occurring variations (e.g. polymorphisms), each with its own valid existence. This clone is substantially in agreement with the reference, but a complete review of all prevailing variants is recommended prior to use. [More info](#)

OTI Annotation: This clone was engineered to express the complete ORF with an expression tag. Expression varies depending on the nature of the gene.

Components: The ORF clone is ion-exchange column purified and shipped in a 2D barcoded Matrix tube containing 10ug of transfection-ready, dried plasmid DNA (reconstitute with 100 ul of water).

Reconstitution Method:

1. Centrifuge at 5,000xg for 5min.
2. Carefully open the tube and add 100ul of sterile water to dissolve the DNA.
3. Close the tube and incubate for 10 minutes at room temperature.
4. Briefly vortex the tube and then do a quick spin (less than 5000xg) to concentrate the liquid at the bottom.
5. Store the suspended plasmid at -20°C. The DNA is stable for at least one year from date of shipping when stored at -20°C.

RefSeq: [NM_001039496.2](#)

RefSeq Size: 764 bp

RefSeq ORF: 603 bp

Locus ID: 25858

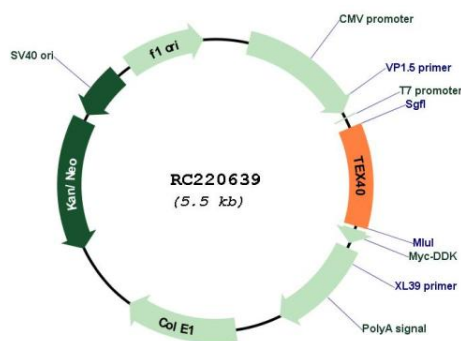
UniProt ID: [Q9NTU4](#)

Cytogenetics: 11q13.1

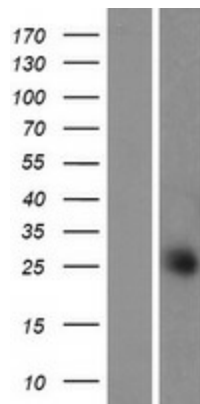
MW: 22.7 kDa

Gene Summary: Auxiliary component of the CatSper complex, a complex involved in sperm cell hyperactivation. Sperm cell hyperactivation is needed for sperm motility which is essential late in the preparation of sperm for fertilization. Required for a distribution of the CatSper complex in linear quadrilateral nanodomains along the flagellum, maximizing fertilization inside the mammalian female reproductive tract. Together with EFCAB9, associates with the CatSper channel pore and is required for the two-row structure of each single CatSper channel.[UniProtKB/Swiss-Prot Function]

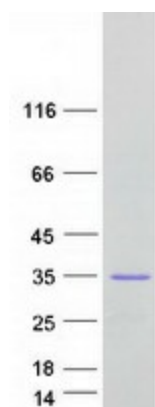
Product images:



Circular map for RC220639



Western blot validation of overexpression lysate (Cat# [LY422061]) using anti-DDK antibody (Cat# [TA50011-100]). Left: Cell lysates from untransfected HEK293T cells; Right: Cell lysates from HEK293T cells transfected with RC220639 using transfection reagent MegaTran 2.0 (Cat# [TT210002]).



Coomassie blue staining of purified CATSPERZ protein (Cat# [TP320639]). The protein was produced from HEK293T cells transfected with CATSPERZ cDNA clone (Cat# RC220639) using MegaTran 2.0 (Cat# [TT210002]).