

## Product datasheet for **RC220635**

### HSPA4 (NM\_002154) Human Tagged ORF Clone

#### Product data:

Product Type:	Expression Plasmids
Product Name:	HSPA4 (NM_002154) Human Tagged ORF Clone
Tag:	Myc-DDK
Symbol:	HSPA4
Synonyms:	APG-2; HEL-S-5a; HS24/P52; hsp70; hsp70RY; HSPH2; RY
Mammalian Cell Selection:	Neomycin
Vector:	pCMV6-Entry (PS100001)
E. coli Selection:	Kanamycin (25 ug/mL)



[View online »](#)

**ORF Nucleotide  
Sequence:**

>RC220635 representing NM\_002154  
 Red=Cloning site Blue=ORF Green=Tags(s)

TTTTGTAATACGACTCACTATAGGGCGGCCGGAATTCGTCGACTGGATCCGGTACCGAGGAGATCTGCC  
 GCC**CGATCGCC**

ATGTCGGTGGTGGGCATAGACCTGGGCTTCCAGAGCTGCTACGTCGCTGTGGCCCGCCGGCCGCATCG  
 AGACTATCGCTAATGAGTATAGCGACCGCTGCAGCCGGCTTGCAATTTCTTTTGGTCTAAGAATCGTTC  
 AATTGGAGCAGCAGCTAAAAGCCAGTAATTTCTAATGCAAAGAACACAGTCCAAGGATTTAAAAGATTC  
 CATGGCCGAGCATTCTCTGATCCATTTGTGGAGGCAGAAAAATCTAACCTTGCATATGATATTGTGCAGT  
 TGCCTACAGGATTAACAGGTATAAAGGTGACATATATGGAGGAAGAGCGAAATTTTACCACTGAGCAAGT  
 GACTGCCATGCTTTTGTCCAACTGAAGGAGACAGCCGAAAGTGTCTTAAGAAGCCTGTAGTTGACTGT  
 GTTGTTCGGTTCCTTGTCTTACTGATGCAGAAAGACGATCAGTGTGGATAACAACACAGATTGCTG  
 GTCTTAATTGCTTGCATTAATGAATGAAACCACTGCAGTTGCTCTTGCATATGGAACTATAAGCAGGA  
 TCTTCTGCCTTAGAAGAGAAACCAAGAAATGTAGTTTTGTAGACATGGCCACTCTGCTTATCAAGTT  
 TCTGTATGTGCATTTAATAGAGGAAAACGAAAGTTCTGGCCACTGCATTTGACACGACATTTGGGAGGTA  
 GAAAAATTTGATGAAGTGTAGTAAATCACTTCTGTGAAGAATTTGGGAAGAAATACAAGTAGACATTA  
 GTCCAAAATCCGTGCATTATTACGACTCTCTCAGGAGTGTGAGAACTCAAGAAATTTGATGAGTGCAAA  
 GCTTCAGATCTCCCTTTGAGCATTGAATGTTTTATGAATGATGTTGATGTATCTGGAACTATGAATAGAG  
 GCAAAATTTCTGGAGATGTCAATGATCTCTTAGCTAGAGTGGAGCCACCCTTCGTAGTGTTTTGGAA  
 AACCAAGTTAAAGAAAGAAGATTTTATGCAGTGGAGATAGTTGGTGGTGTACACGAATCCCTGCGGT  
 AAAGAGAAGATCAGCAAAATTTTCGGTAAAGAACCTAGTACAACATTAATGCTGATGAAGCTGCACTC  
 GAGGCTGTGCATTGCAGTGTGCCATTTATCGCCTGCTTTCAAAGTCAGAGAATTTTCTACTGATGT  
 AGTACCATATCCAATATCTCTGAGATGGAATTCCTCAGCTGAAGAAGGGTCAAGTGACTGTGAAGTCTTT  
 TCCAAAATCATGCTGCTCCTTTCTCTAAAGTTCTTACATTTTATAGAAAGGAACCTTTCACTCTTGAGG  
 CCTACTACAGCTCTCCTCAGGATTTGCCCTATCCAGATCCTGCTATAGCTCAGTTTTCAGTTCAGAAAGT  
 CACTCCTCAGTCTGATGGCTCCAGTTCAAAGTCAAAGTCAAAGTTCGAGTAAATGTCCATGGCATTTC  
 AGTGTGTCCAGTGCATCTTATGAGGAGTTCACAAGTCTGAGGAAAATGAGGAGCCAATGGAAACAGATC  
 AGAATGCAAAGGAGGAAGAGAAGATGCAAGTGGACCAGGAGGAACCATGTTGAAGAGCAACAGCAGCA  
 GACACCAGCAGAAAATAAGGCAGAGTCTGAAGAAATGGAGACCTCTCAAGCTGGATCCAAGGATAAAAAG  
 ATGGACCAACCACCCCAAGCCAAGAAGGCAAAAAGTGAAGACCAGTACTGTGGACCTGCCAATCGAGAATC  
 AGCTATTATGGCAGATAGACAGAGAGATGCTCAACTTGTACATTGAAAATGAGGGTAAGATGATCATGCA  
 GGATAAATCGGAGAAGGAGCGGAATGATGCTAAGAACGCAGTGGAGGAATATGTGTATGAAATGAGAGAC  
 AAGCTTAGTGGTGAATATGAGAAGTTTGTGAGTGAAGATGATCGTAACAGTTTTACTTTGAAACTGGAAG  
 ATACTGAAAATTTGGTGTATGAGGATGGAGAAGACCAGCCAAAGCAAGTTTATGTTGATAAGTTGGCTGA  
 ATTAATAAATCTAGGTCAACCTATTAAGATACGTTTCCAGGAATCTGAAGAACGACCAAAATTTATTTGAA  
 GAAGTGGGAAACAGATCCAACAGTATATGAAAATAATCAGCTCTTTCAAAAACAAGGAGGACCAGTATG  
 ATCATTGGATGCTGCTGACATGACAAAGGTAGAAAAAGCACAATGAAGCAATGGAGTGGATGAATAA  
 CAAGCTAAATCTGCAGAACAAAGCAGAGTTTGACCATGGATCCAGTTGTCAAGTCAAAGAGATTGAAGCT  
 AAAATTAAGGAGCTGACAAGTACTTGTAGCCCTATAATTTCAAAGCCCAACCCAAAGTGGAACTCCAA  
 AAGAGGAACAAAAAATGCAGAGCAGAATGGACCAGTGGATGGACAAGGAGACAACCCAGGCCCCAGGC  
 TGCTGAGCAGGGTACAGACACAGCTGTGCCTTCGGATTACAGACAAGAAGCTTCTGAAATGGACATTGAT

**ACGCGT**ACGCGGCCGCTCGAGCAGAACTCATCTCAGAAGAGGATCTGGCAGCAATGATATCTGGATT  
 ACAAGGATGACGACGATAAGGTTTAA

**Protein Sequence:** >RC220635 representing NM\_002154  
Red=Cloning site Green=Tags(s)

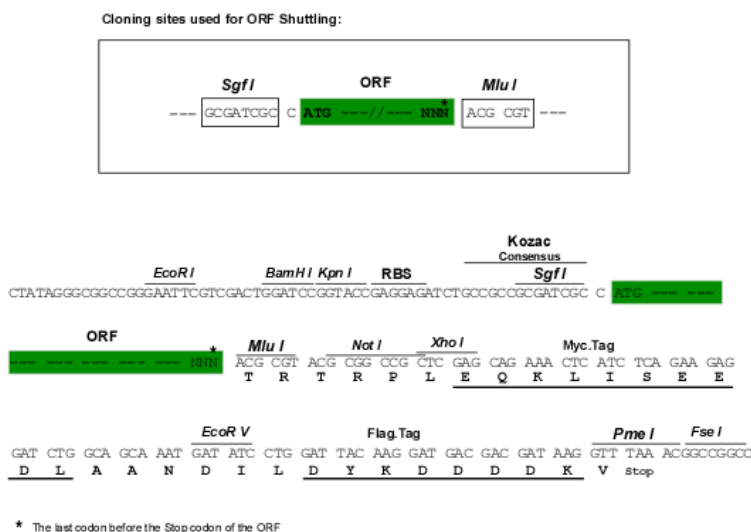
MSVVGIDLGFQSCYVAVARAGGIETIANEYSDRCTPACISFGPKNRSIGAAAKSQVISNAKNTVQGFKRF  
HGRAFSDFVVEAEKSNLAYDIVQLPTGLTGIKVTYMEEERNFTTEQVTAMLLSKLKETAESVLKKPVVDC  
VVSVPFCFYDAERRSVMDTTQIAGLNCLRMLNETTAVLAYGIYKQDLPALKEKPRNVVFDVMDGHSAYQV  
SVCAFNRGKLVKVLATAFDTTLGGRKFDEVLVNHFCEEFGKYYKLDIKSKIRALLRLSQECEKLLKLSAN  
ASDLPLSIECFMNDVDVSGTMNRGKFLEMCNDLLARVEPPLRSVLEQTKLKKEDIYAVEIVGGATRIPAV  
KEKISKFFGKELSTTLNADEAVTRGCALQCAILSPAFAKVPREFSITDVVPYPISLRWNSPAEEGSSDCEVF  
SKNHAAPFSKVLTFYRKEPFTLEAYYSSPQDLPYPDPAIAQFSVQKVTPQSDGSSSKVKVVRVNVHGF  
SVSSASLVEVHKSEENEPMETDQNAKEEEKMQVDQEEPHVEEQQQTPAENKAESEEMETSQAGSKDKK  
MDQPPQAKKAKVKTSTVDLPIENQLLWQIDREMLNLYIENEGKMIMQDKLEKERNDAKNAVEEYVYEMRD  
KLSGEYEKFSVEDDRNSFTLKLLEDTENWL YEDGEDQPKQVYVDKLAELKNLGPQIKIRFQSEERPCLFE  
ELGKQIQYMKIISFFKNKEDQYDHLDAADMTKVEKSTNEAMEWMNKNLNLQNKQSLTMDPVVKSKEIEA  
KIKELTSTCSPIIISKPKKVEPPKKEEQKNAEQNGPVDGQGNPQPAAEQGTDTAVPSDSKKLPEMDID

TRTRPLEQKLISEEDLAANDILDYKDDDDKV

**Chromatograms:** [https://cdn.origene.com/chromatograms/mk6170\\_g02.zip](https://cdn.origene.com/chromatograms/mk6170_g02.zip)

**Restriction Sites:** Sgfl-Mlul

Cloning Scheme:



ACCN: NM\_002154

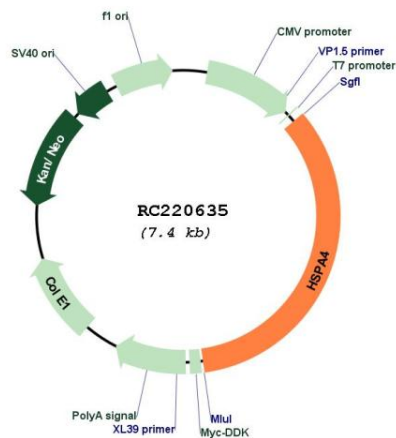
ORF Size: 2520 bp

OTI Disclaimer: Due to the inherent nature of this plasmid, standard methods to replicate additional amounts of DNA in E. coli are highly likely to result in mutations and/or rearrangements. Therefore, OriGene does not guarantee the capability to replicate this plasmid DNA. Additional amounts of DNA can be purchased from OriGene with batch-specific, full-sequence verification at a reduced cost. Please contact our customer care team at [custsupport@origene.com](mailto:custsupport@origene.com) or by calling 301.340.3188 option 3 for pricing and delivery.

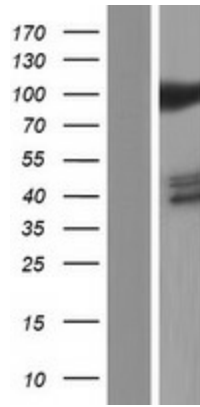
The molecular sequence of this clone aligns with the gene accession number as a point of reference only. However, individual transcript sequences of the same gene can differ through naturally occurring variations (e.g. polymorphisms), each with its own valid existence. This clone is substantially in agreement with the reference, but a complete review of all prevailing variants is recommended prior to use. [More info](#)

<b>OTI Annotation:</b>	This clone was engineered to express the complete ORF with an expression tag. Expression varies depending on the nature of the gene.
<b>Components:</b>	The ORF clone is ion-exchange column purified and shipped in a 2D barcoded Matrix tube containing 10ug of transfection-ready, dried plasmid DNA (reconstitute with 100 ul of water).
<b>Reconstitution Method:</b>	<ol style="list-style-type: none"><li>1. Centrifuge at 5,000xg for 5min.</li><li>2. Carefully open the tube and add 100ul of sterile water to dissolve the DNA.</li><li>3. Close the tube and incubate for 10 minutes at room temperature.</li><li>4. Briefly vortex the tube and then do a quick spin (less than 5000xg) to concentrate the liquid at the bottom.</li><li>5. Store the suspended plasmid at -20°C. The DNA is stable for at least one year from date of shipping when stored at -20°C.</li></ol>
<b>RefSeq:</b>	<a href="#">NM_002154.4</a>
<b>RefSeq Size:</b>	3385 bp
<b>RefSeq ORF:</b>	2523 bp
<b>Locus ID:</b>	3308
<b>UniProt ID:</b>	<a href="#">P34932</a>
<b>Cytogenetics:</b>	5q31.1
<b>Protein Families:</b>	Druggable Genome, ES Cell Differentiation/IPS
<b>Protein Pathways:</b>	Antigen processing and presentation
<b>MW:</b>	94.2 kDa

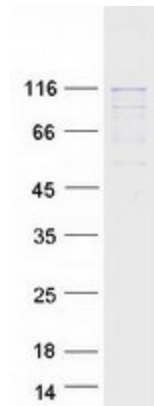
### Product images:



Circular map for RC220635



Western blot validation of overexpression lysate (Cat# [LY400782]) using anti-DDK antibody (Cat# [TA50011-100]). Left: Cell lysates from untransfected HEK293T cells; Right: Cell lysates from HEK293T cells transfected with RC220635 using transfection reagent MegaTran 2.0 (Cat# [TT210002]).



Coomassie blue staining of purified HSPA4 protein (Cat# [TP320635]). The protein was produced from HEK293T cells transfected with HSPA4 cDNA clone (Cat# RC220635) using MegaTran 2.0 (Cat# [TT210002]).