

## Product datasheet for RC220634

### SSBP3 (NM\_001009955) Human Tagged ORF Clone

#### Product data:

Product Type:	Expression Plasmids
Product Name:	SSBP3 (NM_001009955) Human Tagged ORF Clone
Tag:	Myc-DDK
Symbol:	SSBP3
Synonyms:	CSDP; SSDP; SSDP1
Mammalian Cell Selection:	Neomycin
Vector:	pCMV6-Entry (PS100001)
E. coli Selection:	Kanamycin (25 ug/mL)
ORF Nucleotide Sequence:	>RC220634 representing NM_001009955 Red=Cloning site Blue=ORF Green=Tags(s)

TTTTGTAATACGACTCACTATAGGGCGCCGGGAATTCGTCGACTGGATCCGGTACCGAGGAGATCTGCC  
GCC**CGATCGCC**

ATGTTTGCCAAAGGCAAAGGCTCGGCGGTGCCCTCGGATGGGCAGGCTCGGAAAAAGTTAGCTTTATACG  
TCTACGAATATTTACTGCACGTAGGAGCACAGAAATCTGCACAGACCTTCTTATCGGAGATTCGATGGGA  
AAAAAACATCACGTTGGGAGAACCCTGGGTTTTGCACTCGTGGTGGTGTGATTTTGGGACCTTTAC  
TGTGCAGCTCCTGAAAGGAGAGACACTTGTGAACATTCAAGTGAAGCAAAAGCCTTTCATGATTATAGTG  
CAGCAGCTGCCCGAGCCCCGTGCTTGGCAACATTCCCCCAACGATGGGATGCCGGGAGGCCCATCCC  
GCCAGTTTTCTTTCAGCCTTTATGTACCGCGATACGCAGGCGGCCCCAGGCCCCCGATCAGAATGGGA  
AACCAGCTCCGGGAGGAGTTCCTGGGACACAGCCATTGCTGCCAATTCTATGGATCCCACACGACAAC  
AAGGCCACCCCAACATGGGAGGATCAATGCAGAGAATGAACCCTCCCCGAGGCATGGGGCCCATGGGTCC  
CGGCCACAGAATTACGGCAGCGCATGAGACCACCAACTCCCTCGGCCCGCCATGCCCGGGATT  
AACATGGGCCCGGAGCTGGCAGACCCTGGCCAATCCTAACAGTGCTAACTCAATTCATACTCCTCCT  
CATCACCTGGTACCTATGTGGGACCCCTGGTGGTGGCGGTCTCCAGGAACACCCATTATGCCAGTCC  
CGCAGATTCACAAATTCAGTGACAACATCTACAAATGATTAATCCAGTGCCGCTGGAGGCAGCCGG  
TCCAATTCGCGATGGGTCCCGCTCGGACGGTCCGATGGCGGCATGGGTGGCATGGAGCCACACCACA  
TGAATGGATCATTAGGGTCAGGCGACATAGACGGACTTCAAAAAATTCTCTAACAAACATAAGTGGCAT  
TAGCAATCCTCCAGCACCCCTCGAGATGACGGCGAGCTAGGAGGAACTTCTCCTCACTCCTTTCAGAAC  
GACAATTATTCTCAAGCATGACGATGAGTGTG

**ACGCGT**ACGCGGCCGCTCGAGCAGAAACTCATCTCAGAAGAGGATCTGGCAGCAATGATATCCTGGATT  
ACAAGGATGACGACGATAAGGTTAA



[View online »](#)

**Protein Sequence:** >RC220634 representing NM\_001009955  
Red=Cloning site Green=Tags(s)

MF AKGKGS AVPSD GQAREKLALVYVEYLLHVG AQKSAQTF LSEIRWEKNITLGEPPGFLHSWCVFDLY  
 CAAPER RDTCEHSSEAKAFHDY SAAAAPSPVLGNIPPNDGMPGGPIPPGFFQPFMSPRYAGGPRPPIRMG  
 NQPPGGVPGTQPLL P NSMDPTRQQGHPNMGGSMQRMNPPRGMGPMGPGPQNYGSGMRPPNSLGPAMPGI  
 NMGPAGRPWPNPNSANSIPYSSSSPGTYVGP PGGGGPPGTPIMPSPADSTNSSDNIYTMINPVP PGGSR  
 SNFPMGPGSDGPMGGMGMEPHHMNGSLGSGDIDGLPKNSPNNISGINSNPPGTPRDDGELGGNFLHSFQN  
 DNYSPSMTMSV

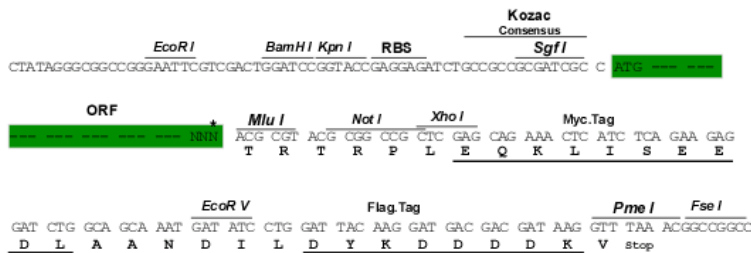
TRTRPLEQKLISEEDLAANDILDYKDDDDKV

**Chromatograms:** [https://cdn.origene.com/chromatograms/mk8054\\_g02.zip](https://cdn.origene.com/chromatograms/mk8054_g02.zip)

**Restriction Sites:** SgfI-MluI

**Cloning Scheme:**

Cloning sites used for ORF Shuttling:



\* The last codon before the Stop codon of the ORF

**ACCN:** NM\_001009955

**ORF Size:** 1083 bp

**OTI Disclaimer:** The molecular sequence of this clone aligns with the gene accession number as a point of reference only. However, individual transcript sequences of the same gene can differ through naturally occurring variations (e.g. polymorphisms), each with its own valid existence. This clone is substantially in agreement with the reference, but a complete review of all prevailing variants is recommended prior to use. [More info](#)

**OTI Annotation:** This clone was engineered to express the complete ORF with an expression tag. Expression varies depending on the nature of the gene.

**Components:** The ORF clone is ion-exchange column purified and shipped in a 2D barcoded Matrix tube containing 10ug of transfection-ready, dried plasmid DNA (reconstitute with 100 ul of water).

**Reconstitution Method:**

1. Centrifuge at 5,000xg for 5min.
2. Carefully open the tube and add 100ul of sterile water to dissolve the DNA.
3. Close the tube and incubate for 10 minutes at room temperature.
4. Briefly vortex the tube and then do a quick spin (less than 5000xg) to concentrate the liquid at the bottom.
5. Store the suspended plasmid at -20°C. The DNA is stable for at least one year from date of shipping when stored at -20°C.

**RefSeq:** [NM\\_001009955.4](#)

**RefSeq Size:** 1993 bp

**RefSeq ORF:** 1086 bp

**Locus ID:** 23648

**UniProt ID:** [Q9BWW4](#)

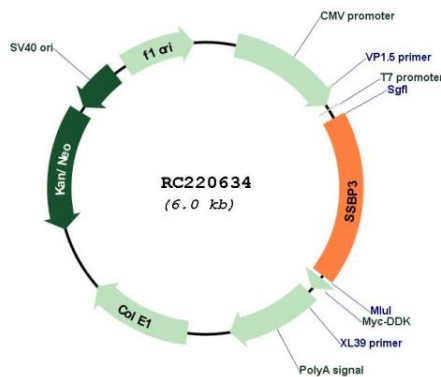
**Cytogenetics:** 1p32.3

**Protein Families:** Transcription Factors

**MW:** 37.5 kDa

**Gene Summary:** May be involved in transcription regulation of the alpha 2(I) collagen gene where it binds to the single-stranded polypyrimidine sequences in the promoter region.[UniProtKB/Swiss-Prot Function]

**Product images:**



Circular map for RC220634