

## Product datasheet for **RC220628**

### CD272 (BTLA) (NM\_001085357) Human Tagged ORF Clone

#### Product data:

Product Type: Expression Plasmids

Tag: Myc-DDK

Symbol: CD272

Synonyms: BTLA1; CD272

Mammalian Cell Selection: Neomycin

Vector: pCMV6-Entry (PS100001)

E. coli Selection: Kanamycin (25 ug/mL)

ORF Nucleotide Sequence: >RC220628 representing NM\_001085357  
 Red=Cloning site Blue=ORF Green=Tags(s)

TTTTGTAATACGACTCACTATAGGGCGGCCGGAATTCGTCGACTGGATCCGGTACCGAGGAGATCTGCC  
 GCC**CGATCGCC**

ATGAAGACATTGCCTGCCATGCTTGGAAGTGGGAAATTATTTGGGTCTTCTTAAATCCCATATCTGG  
 ACATCTGGAACATCCATGGGAAAGAATCATGTGATGTACAGCTTTATATAAGAGACAATCTGAACACTC  
 CATCTTAGCAGGAGATCCCTTTGAACTAGAATGCCCTGTGAAATACTGTGCTAACAGGCCTCATGTGACT  
 TGGTGCAAGCTCAATGGAACAACATGTGTAAACTTGAAGATAGACAAACAAGTTGGAAGGAAGAGAAGA  
 ACATTTTCATTTTCATTCTACATTTTGAACCAAGTCTTCTAATGACAATGGGTCATACCGCTGTTCTGC  
 AAATTTTCAGTCTAATCTCATTGAAAGCCACTCAACAACCTTTTATGTGACAGGAAAGCAAAATGAATC  
 TCTGACACAGCAGGAAGGAAATTAACCTGGTTGATGCTCACCTTAAGAGTGAGCAAAACAGAAGCAAGCA  
 CCAGGCAAAATCCCAAGTACTGCTATCAGAACTGGAATTTATGATAATGACCCTGACCTTTGTTTCAG  
 GATGCAGGAAGGGTCTGAAGTTTATTCTAATCCATGCCTGGAAGAAAACAAACCAGGCATTGTTTATGCT  
 TCCCTGAACCATCTGTCTTGGACTGAAGTCAAGACTGGCAAGAAATGTAAAAGAAGCACCAACAGAAT  
 ATGCATCCATATGTGTGAGGAGT

**ACGCGT**ACGCGGCCGCTCGAGCAGAAACTCATCTCAGAAGAGGATCTGGCAGCAAATGATATCTGGATT  
 ACAAGGATGACGACGATAAGGTTTAA



[View online »](#)

**Protein Sequence:** >RC220628 representing NM\_001085357  
 Red=Cloning site Green=Tags(s)

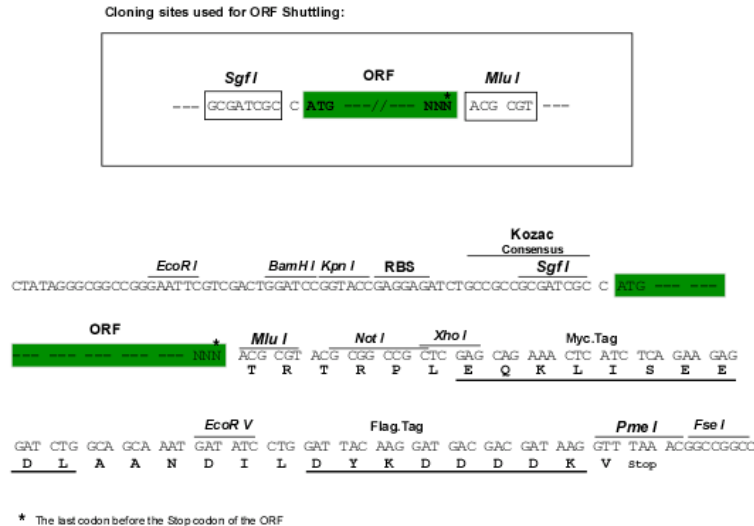
MKTLPAMLGTGKLFWVFFLIPYLDIWNHKGESCDVQLYIKRQSEHSILAGDPFELECPVKYCANRPHVT  
 WCKLNGTTCVKLEDRQTSWKEEKNISFFILHFEPVLPNDNGSYRCSANFQSNLIESHSTTLTYTGKQNEL  
 SDTAGREINLVDAHLKSEQTEASTRQNSQVLLSETGIYDNDPDLCFRMQEGSEVYSNPCL EENKPGIVYA  
 SLNHSVIGLNSRLARNVKEAPTEYASICVRS

TRTRPLEQKLISEEDLAANDILDYKDDDDKV

**Chromatograms:** [https://cdn.origene.com/chromatograms/mg3958\\_g09.zip](https://cdn.origene.com/chromatograms/mg3958_g09.zip)

**Restriction Sites:** SgfI-MluI

**Cloning Scheme:**



**ACCN:** NM\_001085357

**ORF Size:** 723 bp

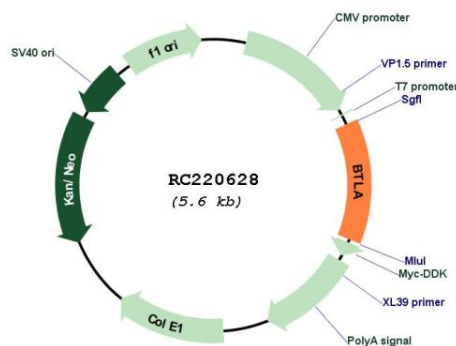
**OTI Disclaimer:** The molecular sequence of this clone aligns with the gene accession number as a point of reference only. However, individual transcript sequences of the same gene can differ through naturally occurring variations (e.g. polymorphisms), each with its own valid existence. This clone is substantially in agreement with the reference, but a complete review of all prevailing variants is recommended prior to use. [More info](#)

**OTI Annotation:** This clone was engineered to express the complete ORF with an expression tag. Expression varies depending on the nature of the gene.

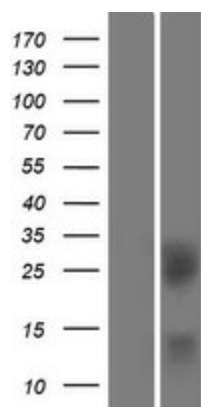
**Components:** The ORF clone is ion-exchange column purified and shipped in a 2D barcoded Matrix tube containing 10ug of transfection-ready, dried plasmid DNA (reconstitute with 100 ul of water).

<b>Reconstitution Method:</b>	<ol style="list-style-type: none"> <li>1. Centrifuge at 5,000xg for 5min.</li> <li>2. Carefully open the tube and add 100ul of sterile water to dissolve the DNA.</li> <li>3. Close the tube and incubate for 10 minutes at room temperature.</li> <li>4. Briefly vortex the tube and then do a quick spin (less than 5000xg) to concentrate the liquid at the bottom.</li> <li>5. Store the suspended plasmid at -20°C. The DNA is stable for at least one year from date of shipping when stored at -20°C.</li> </ol>
<b>Note:</b>	Plasmids are not sterile. For experiments where strict sterility is required, filtration with 0.22um filter is required.
<b>RefSeq:</b>	<u>NM_001085357.1, NP_001078826.1</u>
<b>RefSeq Size:</b>	3072 bp
<b>RefSeq ORF:</b>	726 bp
<b>Locus ID:</b>	151888
<b>UniProt ID:</b>	<u>Q7Z6A9</u>
<b>Cytogenetics:</b>	3q13.2
<b>Protein Families:</b>	Transmembrane
<b>MW:</b>	27.1 kDa
<b>Gene Summary:</b>	This gene encodes a member of the immunoglobulin superfamily. The encoded protein contains a single immunoglobulin (Ig) domain and is a receptor that relays inhibitory signals to suppress the immune response. Alternative splicing results in multiple transcript variants. Polymorphisms in this gene have been associated with an increased risk of rheumatoid arthritis. [provided by RefSeq, Aug 2011]

## Product images:



Circular map for RC220628



Western blot validation of overexpression lysate (Cat# [LY421272]) using anti-DDK antibody (Cat# [TA50011-100]). Left: Cell lysates from untransfected HEK293T cells; Right: Cell lysates from HEK293T cells transfected with RC220628 using transfection reagent MegaTran 2.0 (Cat# [TT210002]).