

Product datasheet for RC220627

TSSK4 (NM_174944) Human Tagged ORF Clone

Product data:

Product Type:	Expression Plasmids
Product Name:	TSSK4 (NM_174944) Human Tagged ORF Clone
Tag:	Myc-DDK
Symbol:	TSSK4
Synonyms:	C14orf20; STK22E; TSK-4; TSK4; TSSK5
Mammalian Cell Selection:	Neomycin
Vector:	pCMV6-Entry (PS100001)
E. coli Selection:	Kanamycin (25 ug/mL)
ORF Nucleotide Sequence:	>RC220627 representing NM_174944 Red=Cloning site Blue=ORF Green=Tags(s)

TTTTGTAATACGACTCACTATAGGGCGGCCGGAATTCGTCGACTGGATCCGGTACCGAGGAGATCTGCC
GCC**CGATCGCC**

ATGGGGAAGGGAGATGTCTTAGAGGCAGCACCAACCACCACAGCCTACCATTCCCTCATGGATGAATATG
GTTATGAGGTGGCAAGGCCATTGGCCATGGCTCCTATGGGTCGGTATATGAGGCTTTCTACACAAAGCA
GAAGGTTATGGTGGCAGTCAAGATCATCTCAAAGAAGAAGGCCTCTGATGACTATCTTAACAAGTTCCTG
CCCCGTGAAATACAGGTAATGAAAGTCTTGCGGCACAAGTACCTCATCAACTTCTATCGGGCCATTGAGA
GCACATCTCGAGTATACATCATTCTGGAAGTGGCTCAGGGTGGTATGTCCTTGAATGGATCCAGCGCTA
CGGGCCCTGCTCTGAGCCCTTGTGGCAAGTGGTTCTCCAGCTGACCCGAGGATTGGCTACCTGAC
AGCAAGAGCATCGTGCACCGGACTTAAAGTTGGAGAACCCTGTTGCTGGACAAGTGGGAGAATGTGAAGA
TATCAGACTTTGGCTTTGCCAAGATGGTGCCTTCTAACAGCCTGTGGGTTGTAGCCCTTTACCGCCA
AGTGAAGTGTCTTTCCACCTCAGCCAGACTTACTGTGGCAGCTTTGCTTACGCTTGCCAGAGATCTTA
CGAGGCTTGCCCTACAACCCTTTCTGTCTGACACCTGGAGCATGGGCGTCATCTTTACTCTAGTGG
TCGCCCCTGTCCTTTGATGACACCAATCTCAAAAAGCTGCTAAGAGAGACTCAGAAGGAGGTCACCTT
CCCAGCTAACCATAACCATCTCCAGGAGTGCAAGAACCTGATCCTCCAGATGCTACGCCAAGCCACTAAG
CGTGCCACCATTTGGACATCATCAAGGATTCCTGGGTGCTCAAGTTCAGCCTGAGCAACCCACCCATG
AGATCAGGCTGCTTGAGCCATGTGCCAGCTCCACAACACCACTAAACAGCACCAATCCTTGCAAATTAC
GACC

ACGCGTACGCGGCCGCTCGAGCAGAACTCATCTCAGAAGAGGATCTGGCAGCAAATGATATCCTGGATT
ACAAGGATGACGACGATAAGGTTTAA



[View online »](#)

Protein Sequence: >RC220627 representing NM_174944
Red=Cloning site Green=Tags(s)

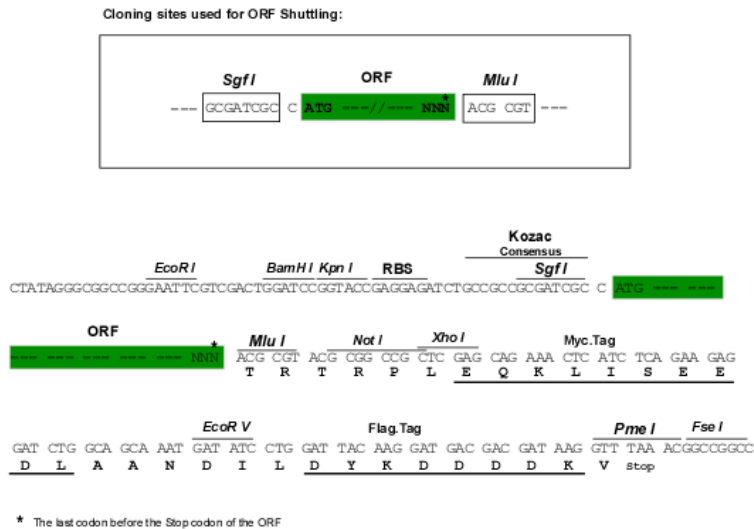
MGKGDVLEAAPTTTAYHSLMDEYGVGKAIGHGSYGSVYEAFYTKQKVMVAVKIISKKKASDDYLNKFL
 PREIQVMKVLRHKYLINFYRAIESTSRVYIILELAQGGDVLWQRYGACSEPLAGKWFSQLTLGIAYLH
 SKSIVHRDLKLENLLLDKWENVKISDFGFAKMVPSNQPVGCSYRQVNCFSHLSQTYCGSFAYACPEIL
 RGLPYNPFLSDTWSMGVILYTLVVAHLPFDDTNLKKLLRETQKEVTFPANHTISQECKNLILQMLRQATK
 RATILDIIKDSWVLKFQPEQPTHEIRLLEAMCQLHNTTKQHSLQITT

TRTRPLEQKLISEEDLAANDILDYKDDDDKV

Chromatograms: https://cdn.origene.com/chromatograms/mg4124_a05.zip

Restriction Sites: SgfI-MluI

Cloning Scheme:



ACCN: NM_174944

ORF Size: 984 bp

OTI Disclaimer: The molecular sequence of this clone aligns with the gene accession number as a point of reference only. However, individual transcript sequences of the same gene can differ through naturally occurring variations (e.g. polymorphisms), each with its own valid existence. This clone is substantially in agreement with the reference, but a complete review of all prevailing variants is recommended prior to use. [More info](#)

OTI Annotation: This clone was engineered to express the complete ORF with an expression tag. Expression varies depending on the nature of the gene.

Components: The ORF clone is ion-exchange column purified and shipped in a 2D barcoded Matrix tube containing 10ug of transfection-ready, dried plasmid DNA (reconstitute with 100 ul of water).

Reconstitution Method:

1. Centrifuge at 5,000xg for 5min.
2. Carefully open the tube and add 100ul of sterile water to dissolve the DNA.
3. Close the tube and incubate for 10 minutes at room temperature.
4. Briefly vortex the tube and then do a quick spin (less than 5000xg) to concentrate the liquid at the bottom.
5. Store the suspended plasmid at -20°C. The DNA is stable for at least one year from date of shipping when stored at -20°C.

RefSeq: [NM_174944.4](#)

RefSeq Size: 1264 bp

RefSeq ORF: 987 bp

Locus ID: 283629

UniProt ID: [Q6SA08](#)

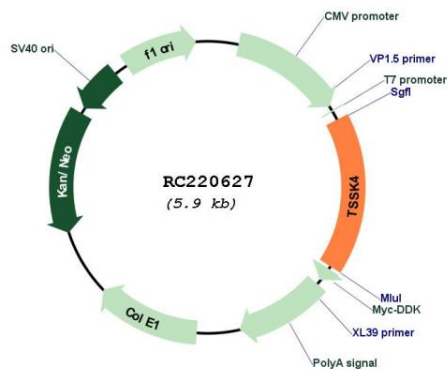
Cytogenetics: 14q12

Protein Families: Druggable Genome, Protein Kinase

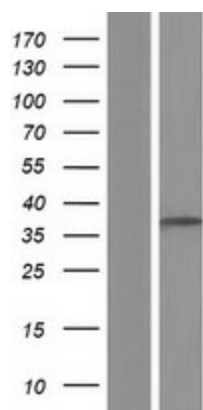
MW: 37.3 kDa

Gene Summary: This gene encodes a member of the testis-specific serine/threonine kinase family. The encoded protein is thought to be involved in spermatogenesis via stimulation of the CREB/CRE responsive pathway through phosphorylation of the cAMP responsive element binding protein transcription factor. Alternative splicing results in multiple transcript variants. [provided by RefSeq, May 2010]

Product images:



Circular map for RC220627



Western blot validation of overexpression lysate (Cat# [LY406345]) using anti-DDK antibody (Cat# [TA50011-100]). Left: Cell lysates from untransfected HEK293T cells; Right: Cell lysates from HEK293T cells transfected with RC220627 using transfection reagent MegaTran 2.0 (Cat# [TT210002]).