

Product datasheet for **RC220623**

PUS7L (NM_001098614) Human Tagged ORF Clone

Product data:

Product Type:	Expression Plasmids
Product Name:	PUS7L (NM_001098614) Human Tagged ORF Clone
Tag:	Myc-DDK
Symbol:	PUS7L
Mammalian Cell Selection:	Neomycin
Vector:	pCMV6-Entry (PS100001)
E. coli Selection:	Kanamycin (25 ug/mL)



[View online »](#)

ORF Nucleotide
Sequence:

>RC220623 ORF sequence

Red=Cloning site Blue=ORF Green=Tags(s)

TTTTGTAATACGACTCACTATAGGGCGGCCGGAATTCGTCGACTGGATCCGGTACCGAGGAGATCTGCC
GCCGCGATCGCCATGGAAGAAGATACAGATTATAGAATCAGGTTTAGTTCCTTTGTGTTTCTTAATGATCACGTTGGATTTCC
ATGGCACTATAAAAAGCTCACCAGTGACTTTATTGTTATTGAAATTGATGAACAGGGACAGTTAGTTAA
TAAGACCATCGATGAGCCTATTTTCAAGATTAGTGAAATACAACCTGAGCCAAATAATTTCCAAAAA
CCAAAAGTACTCTTCAAAATCTGTCCTTAGAAGATGGAAGAAACCAAGAAGTTCATACTTTGATTAAGT
ACACTGATGGTGACCAAAATCATCAGTCTGGTTCAGAAAAGGAAGATACTATCGTTGATGGAACCTCCAA
ATGTGAAGAAAAAGCTGATGTTTAAGCTCCTTTTGGATGAAAAAAGTACTGAGTTACTGAATAATTTT
GCCTGTGATGTAAGAGAGAAGTGGCTTTCTAAAACAGAGCTAATTGGACTACCTCCTGAATTCTCAATAG
GCAGAATCGTTGACAAAAACCAGAGGGCTAGTTTACACAGTGCCATTAGGCAGAAATTTCCATTTTGTAGT
AACTGTAGGAAAAACAGTGAAATTGTTGTAACCAAACTCTTGAATATAAAGAAGTCTTGCATTTGGTA
TCTGAAGAGGAAGCATTGACTTTTTTAAATATTTGGATGCAAAGAAAGAAAATTCAAAATTTACCTTTA
AACCTGATACAAACAAAGACCACAGAAAAGCTGTCCACCATTTTGTCAACAAAAAGTTTGGAAACCTTGT
GGAAACCAAACTTTTTCTAAAATGAATTGCAAGTCTGTTAATCCGAATGTGGTGGTAACAGTAAGATTT
CGGGAAAAAGCACACAAACGTGGGAAAAGGCTCTTTCTGAATGCCAAGAAGGAAAAGTTATATACAG
CTTTTACCTACGAAAGGAAAACCTGGAATGTTGAAGCGATTGGTTTTTGTAGCTATCAAACCTGGTGT
TATTCCTCGGATTTTGTATGTCAGGCCTTAAAGACAAGAAAGCCATCACCTATCAAGCAATGGTGT
AGAAAAGTGACTCCAGAGAGGTTGAAAAATTTGAAAAAGAAATGAAAAAGAAAGAAATGAATGTCTTTA
ATATTCGGTCTGTAGATGATCCCTGAGACTTGGTCAGCTCAAAGGAAATCACTTTGATATTGTCATTAG
AAATTTAAAAAAACAAATAAATGATTCTGCAAACTGAGGGAGAGAATTATGGAAGCAATAGAAAATGTT
AAGAAAAAAGGCTTTGTGAATTACTATGGACCACAGAGATTTGGGAAGGGAAGGAAAAGTTACACAGACC
AAATTGGACTAGCTTTGCTGAAGAATGAATGATGAAAGCCATAAAATGTTTCTTACACCAGAAGACTT
GGATGATCCTGTAATAGAGCAAAGAAGTATTTCTTCAAACCTGAGGATGCTAAAGGCACACTTTTCATTG
ATGCTGAATCAAAGTGCCTGAGAGAGCATTGTTGGAGGATTGCACCGCTTTGGCATGACCGAGGAAG
GTTGTATCCAGGCATGGTTCTTTACCCATTCCATGCGCATATTCTATGTTACGCATATACCAGCAA
AATTTGGAATGAGGCAGTATCTTACAGACTTGAACCTATGGAGCAAGAGTAGTGCAGGGTATTGGTCT
TGTTTGGATGAAGACATTGATGACGAGAATTTCCAAAATAGTAAAATTCACCTGGTAAGTGAAGAGGAGG
GATCAGCTAATATGTATGCAATACATCAGGTGGTCTTCCAGTACTTGGATACAATATTCAGTACCCGAA
GAACAAAGTAGGGCAGTGGTACCATGACATACTTAGCAGAGATGGACTACAGACATGTAGGTTTAAAGTA
CCTACTCTGAAACTGAATATACCAGTTGCTATAGACAGATTTTGAACATCCCTGTAATCTCTCATACC
AACTAATGGAAGATCATGACATTGATGTCAAACGAAAGGTTCCACATTGATGAAACAGCTTTGTCTCT
TTTGATCTCTTTGATCTTGTGCTTATGCTATGCTACCGTTTGTCTGAAGGAAATAATGAAGCATGAC
GTTACGCGTACGCGGCCGCTCGAGCAGAACTCATCTCAGAAGAGGATCTGGCAGCAATGATATCCTGGATT
ACAAGGATGACGACGATAAGGTTTAA

Protein Sequence: >RC220623 protein sequence
 Red=Cloning site Green=Tags(s)

```
MEEDTDYRIRFSSLFFNDHVGFGHTIKSSPSDFIVIEIDEQQLVNKTIDEPIFKISEIQLEPNNFPKK
PKLDLQNL SLEDGRNQEVHTLIKYTDDGQNHQSGSEKEDTIVDGTSCCEEKADVLSSFLDEKTHELLNMF
ACDVREKWL SKTELI GLPPEFSIGRIVDKNQASLHSAIRQKFPFLVTVGKNSEIVVKNLEYKELCHLV
SEEEAFDFFKYLD AKKENS KFTFKPDTNKHDKAVHHFVNKKFGNLVETKSF SKMNCSAGNPVVVTVRF
REKAHKRGRPL SECQEGKVIYTAFTLRKENLEMFEAIGFLAIKLGVIPSDFSYAGLKDKKAITYQAMVV
RKVTPERLKNIEKEIEKKRMNVFNIRSVDLSRLGQLKGNHFDIVIRNLKKQINDSANLRERIMEAIENV
KKKGFVNYYGPRFGKGRKVHTDQIGLALLKNEMMKAIKLFLTPEDLDDPVNRAKKYFLQTEDAKGTL SL
MPEFKVRERALLEALHRFGMTEEGCIQAWFSLPHSMRIFYVHAYTSKIWNEAVSYRLETYGARVVQGD LV
CLDEDIDDENFQNSKIHLVTEEEGSANMYAIHQVVL PVLGYNIQYPKNKVGQWYHDILSRDGLQTCRFKV
PTLKLNI PGCYRQILKHP CNLSYQLMEDHDIDVKTGKSHIDETAL SLLISFDLDASCYATVCLKEIMKHD
V
```

TRTRPLEQKLI SEEDLAANDILDYKDDDDKV

Chromatograms: https://cdn.origene.com/chromatograms/mk6693_g04.zip

Restriction Sites: Sgfl-MluI

Cloning Scheme:

Cloning sites used for ORF Shuttling:



* The last codon before the Stop codon of the ORF

ACCN: NM_001098614

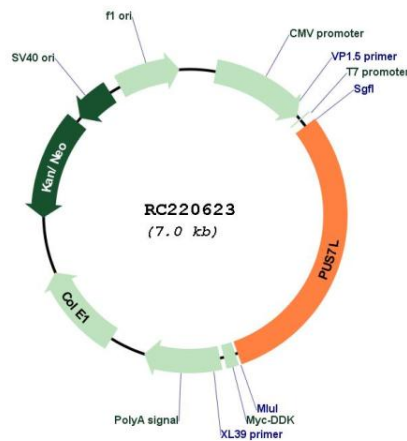
ORF Size: 2103 bp

OTI Disclaimer: The molecular sequence of this clone aligns with the gene accession number as a point of reference only. However, individual transcript sequences of the same gene can differ through naturally occurring variations (e.g. polymorphisms), each with its own valid existence. This clone is substantially in agreement with the reference, but a complete review of all prevailing variants is recommended prior to use. [More info](#)

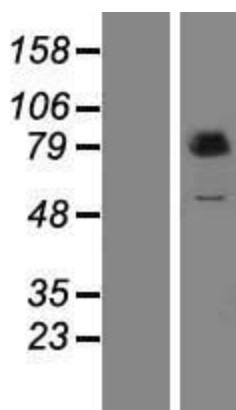
OTI Annotation: This clone was engineered to express the complete ORF with an expression tag. Expression varies depending on the nature of the gene.

Components:	The ORF clone is ion-exchange column purified and shipped in a 2D barcoded Matrix tube containing 10ug of transfection-ready, dried plasmid DNA (reconstitute with 100 ul of water).
Reconstitution Method:	<ol style="list-style-type: none"> 1. Centrifuge at 5,000xg for 5min. 2. Carefully open the tube and add 100ul of sterile water to dissolve the DNA. 3. Close the tube and incubate for 10 minutes at room temperature. 4. Briefly vortex the tube and then do a quick spin (less than 5000xg) to concentrate the liquid at the bottom. 5. Store the suspended plasmid at -20°C. The DNA is stable for at least one year from date of shipping when stored at -20°C.
RefSeq:	<u>NM_001098614.3</u>
RefSeq Size:	3970 bp
RefSeq ORF:	2106 bp
Locus ID:	83448
UniProt ID:	<u>Q9H0K6</u>
Cytogenetics:	12q12
MW:	80.7 kDa
Gene Summary:	Pseudouridylate synthase that catalyzes pseudouridylation of RNAs.[UniProtKB/Swiss-Prot Function]

Product images:



Circular map for RC220623



Western blot validation of overexpression lysate (Cat# [LY420641]) using anti-DDK antibody (Cat# [TA50011-100]). Left: Cell lysates from untransfected HEK293T cells; Right: Cell lysates from HEK293T cells transfected with RC220623 using transfection reagent MegaTran 2.0 (Cat# [TT210002]).