

## Product datasheet for **RC220618**

### GML (NM\_002066) Human Tagged ORF Clone

#### Product data:

**Product Type:** Expression Plasmids  
**Product Name:** GML (NM\_002066) Human Tagged ORF Clone  
**Tag:** Myc-DDK  
**Symbol:** GML  
**Synonyms:** LY6DL  
**Mammalian Cell Selection:** Neomycin  
**Vector:** pCMV6-Entry (PS100001)  
**E. coli Selection:** Kanamycin (25 ug/mL)  
**ORF Nucleotide Sequence:** >RC220618 representing NM\_002066  
 Red=Cloning site Blue=ORF Green=Tags(s)

TTTTGTAATACGACTCACTATAGGGCGGCCGGAATTCGTCGACTGGATCCGGTACCGAGGAGATCTGCC  
 GCC**CGATCGCC**

ATGCTCCTCTTTGCCTTACTCCTAGCCATGGAGCTCCATTGGTGGCAGCCAGTGCCACCATGCGCGCTC  
 AGTGGACTTACAGTTTGAGATGCCATGACTGTGCGGTCAAAATGACTTCAACTGTCCCAACATTAGAGT  
 ATGTCCGTATCATATTAGGCGCTGTATGACAATCTCCATTCGCATAAATCTCGTGAACACTTGTAT  
 AAGAACTGTACAAACAACTGCACATTTGTATATGCAGCTGAACAGCCTCCTGAAGCCCCAGGAAAAATCT  
 TCAAACTAATAGCTTCTACTGGGTTTGTGTGTGAATAGCATGGTTTGCAATGCAGGAGGACCTACTAA  
 TCTTGAAAGGGACATGTTACCCGATGAAGTAAGTGAAGGAGGAGCTTCCAGAAGGAACTGTGAGGCTGGG  
 GTATCAAACTGTTGCTGAGTTTGCCTCTATCATAGTCAGCAATATATTGCCA

**ACGCGT**ACGCGGCCGCTCGAGCAGAACTCATCTCAGAAGAGGATCTGGCAGCAAATGATATCCTGGATT  
 ACAAGGATGACGACGATAAGGTTTAA

**Protein Sequence:** >RC220618 representing NM\_002066  
 Red=Cloning site Green=Tags(s)

MLLFALLLAMELPLVAASATMRAQWTYSRLRCHDCAVINDFNCPNIRVCPYHIRRCMTISIRINSRELLVY  
 KNCTNNTFVYAAEQPPEAPGKIFKTNFSFYWCCNSMVCNAGGPTNLERDMLPDEVTEELPEGTVRLG  
 VSKLLSFASIIIVSNILP

**TR**TRPLEQKLISEEDLAANDILDYKDDDDKV

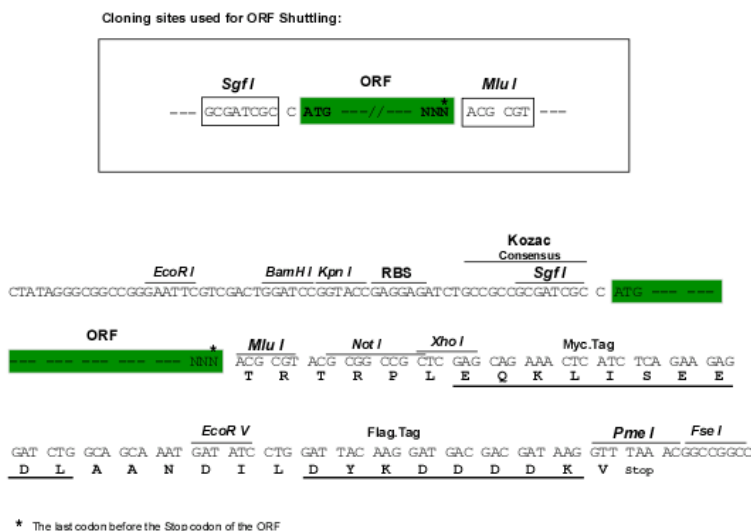
**Chromatograms:** [https://cdn.origene.com/chromatograms/mk6120\\_h07.zip](https://cdn.origene.com/chromatograms/mk6120_h07.zip)



View online »

Restriction Sites: Sgfl-MluI

### Cloning Scheme:



ACCN: NM 002066

ORF Size: 474 bp

**OTI Disclaimer:** The molecular sequence of this clone aligns with the gene accession number as a point of reference only. However, individual transcript sequences of the same gene can differ through naturally occurring variations (e.g. polymorphisms), each with its own valid existence. This clone is substantially in agreement with the reference, but a complete review of all prevailing variants is recommended prior to use. [More info](#)

**OTI Annotation:** This clone was engineered to express the complete ORF with an expression tag. Expression varies depending on the nature of the gene.

**Components:** The ORF clone is ion-exchange column purified and shipped in a 2D barcoded Matrix tube containing 10ug of transfection-ready, dried plasmid DNA (reconstitute with 100 ul of water).

**Reconstitution Method:**

1. Centrifuge at 5,000xg for 5min.
2. Carefully open the tube and add 100ul of sterile water to dissolve the DNA.
3. Close the tube and incubate for 10 minutes at room temperature.
4. Briefly vortex the tube and then do a quick spin (less than 5000xg) to concentrate the liquid at the bottom.
5. Store the suspended plasmid at -20°C. The DNA is stable for at least one year from date of shipping when stored at -20°C.

RefSeq: [NM\\_002066.3](#)

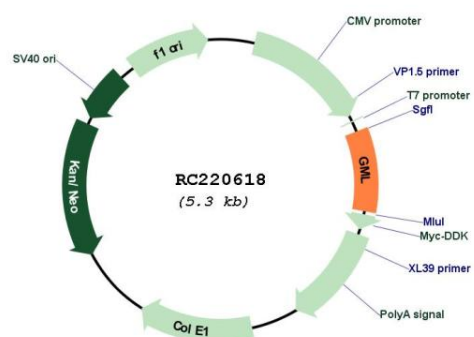
RefSeq Size: 722 bp

RefSeq ORF: 477 bp

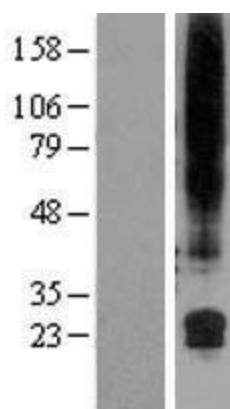
Locus ID: 2765

UniProt ID:	<a href="#">Q99445</a>
Cytogenetics:	8q24.3
Protein Families:	Druggable Genome
MW:	17.5 kDa
Gene Summary:	May play a role in the apoptotic pathway or cell-cycle regulation induced by p53/TP53 after DNA damage.[UniProtKB/Swiss-Prot Function]

## Product images:



Circular map for RC220618



Western blot validation of overexpression lysate (Cat# [LY400757]) using anti-DDK antibody (Cat# [TA50011-100]). Left: Cell lysates from untransfected HEK293T cells; Right: Cell lysates from HEK293T cells transfected with RC220618 using transfection reagent MegaTran 2.0 (Cat# [TT210002]).