

Product datasheet for **RC220612**

BRD2 (NM_005104) Human Tagged ORF Clone

Product data:

Product Type:	Expression Plasmids
Product Name:	BRD2 (NM_005104) Human Tagged ORF Clone
Tag:	Myc-DDK
Symbol:	BRD2
Synonyms:	BRD2-IT1; D6S113E; FSH; FSRG1; NAT; O27.1.1; RING3; RNF3
Mammalian Cell Selection:	Neomycin
Vector:	pCMV6-Entry (PS100001)
E. coli Selection:	Kanamycin (25 ug/mL)



[View online »](#)

ORF Nucleotide Sequence:

>RC220612 representing NM_005104
 Red=Cloning site Blue=ORF Green=Tags(s)

TTTTGTAATACGACTCACTATAGGGCGGCCGGAATTCGTCGACTGGATCCGGTACCGAGGAGATCTGCC
 GCC**CGGATCGCC**

ATGGACATGGGTACTATTAAGAGGAGACTTGAACAATTATTATTGGGCTGCTTCAGAGTGTATGCAAG
 ATTTTAATACCATGTTACCAACTGTTACATTTACAACAAGCCCACTGATGATATTGTCCTAATGGCACA
 AACGCTGGAAAAGATATTCCTACAGAAGTTGCATCAATGCCACAAGAAGAACAAGAGCTGGTAGTGACC
 ATCCCTAAGAACAGCCACAAGAAGGGGGCCAAGTTGGCAGCGCTCCAGGGCAGTGTACCAGTGCCCATC
 AGGTGCCTGCCGTCTTCTGTGTACACACAGCCCTCTATACTCCTCCACCTGAGATACCTACCACTGT
 CCTCAACATTCACCACCATCAGTCATTTCTCTCCACTTCTCAAGTCTTGCACTCTGCTGGACCCCCG
 CTCCTTGTGTTACTGCAGCTCCTCCAGCCAGCCCTTGCCAAGAAAAAAGCGTAAAGCGAAAGCAG
 ATACTACCACCCCTACACCTACAGCCATCTTGGCTCCTGGTTCTCCAGCTAGCCCTCTGGGAGTCTTGA
 GCCTAAGGCAGCACGGCTTCCCCCTATGGGTAGAGAGAGTGGTCGCCCATCAAGCCCCACGCAAAGAC
 TTGCTGACTCTAGCAACAACACCAGAGCTCTAAGAAAGGAAAGCTTTCAGAACAGTAAACATTGCA
 ATGGCATTGTAAGGAGTACTCTTAAGAAGCATGCTGCCTATGCTTGGCCTTCTATAAACAGTGGGA
 TGCTTCTGCATTGGCTGCATGACTACCATGACATCATTAAGCACCCCATGGACCTCAGCACTGTCAAG
 CGGAAGATGGAGAACCGTGATTACCGGGATGCACAGGAGTTTGTGCTGATGTACGGCTTATGTTCTCCA
 ACTGCTATAAGTACAATCCCCAGATCACGATGTTGTGGCAATGGCACGAAAGCTACAGGATGATTTGA
 GTTCCGTTATGCCAAGATGCCAGATGAACCACTAGAACCAGGGCCCTTACCAGTCTCTACTGCCATGCC
 CCTGGCTTGGCCAAATCGTCTTCAGAGTCTCCAGTGAGGAAAGTAGCAGTGAGAGCTCCTCTGAGGAAG
 AGGAGGGAAGATGAGGAGGACGAGGAGGAAGAAGAGAGTGAAGCTCAGACTCAGAGGAAGAAGGGC
 TCATCGTTAGCAGAACTACAGGAACAGCTTCGGGCAGTACATGAACAACCTGGCTGCTCTGCCAGGGT
 CCAATATCCAAGCCCAAGAGGAAAAAGAGAGAAAAAAGAGAAAAAAGAAACGGAAGGCAGAGAAGCATC
 GAGGCCGAGCTGGGGCCGATGAAGATGACAAGGGGCTAGGGCACCCCGCCACCTCAACCTAAGAAGTC
 CAAGAAAGCAAGTGGCAGTGGGGTGGCAGTGTGCTTTAGGCCCTTCTGGCTTTGGACCTTCTGGAGGA
 AGTGGCACCAAGCTCCCCAAAAGGCCACAAGACAGCCCACTGCCCTGCCTACAGGTTATGATTCAG
 AGGAGGAGGAAGAGAGCAGGCCATGAGTTACGATGAGAAGCGGCAGCTGAGCCTGGACATCAACAATT
 ACCTGGGAGAAGCTGGGCCGAGTTGTGCATATAATCCAAGCCAGGGAGCCCTTTACGTGATTCAAAC
 CCAGAAGAGATTGAGATTGATTTTGAACACTCAAGCCATCCACACTTAGAGAGCTTGAGCGCTATGTCC
 TTTCTGCTACGTAAGAAACCCCGGAAGCCCTACACCATTAAGAAGCCTGTGGGAAAGACAAGGAGGA
 ACTGGCTTTGGAGAAAAAGCGGAATTAGAAAAGCGGTTACAAGATGTCAGCGGACAGCTCAATTCTACT
 AAAAAGCCCCCAAGAAAGCAATGAGAAAACAGAGTCATCCTCTGCACAGCAAGTAGCAGTGTACAGCC
 TTAGCGCTTCCAGCTCTAGCTCAGATTCAGCTCCTCCTCTCTCGTCGTCTTCCAGACACCAGTGA
 TTCAGACTCAGGC

ACGCGTACGCGGCCGCTCGAGCAGAACTCATCTCAGAAGAGGATCTGGCAGCAATGATATCCTGGATT
 ACAAGGATGACGACGATAAGGTTTAA

Protein Sequence: >RC220612 representing NM_005104
Red=Cloning site Green=Tags(s)

```
MDMGTIKRRENNYYWAASECMQDFNTMFTNCYIYNKPTDDIVLMAQTLEKIFLQKVASMPQEEQELVVT
IPKNSHKKGAKLAALQGSVTSAHQVPAVSSVSHTALYTPPPEIPTTVLNIPHSVSISSPLLKSLHSAGPP
LLAVTAAPPAQPLAKKKGVKRKADTTTTPTAILAPGSPASPPGSLPKAARLPPMRRESGRPIKPPRKD
LPDSQQQHQSCKKGLSEQLKHCNGILKELL SKKHAAYAWPFYKPVASALGLHDYHDIKHPMDLSTVK
RKMENRDYRDAQEFAADVRLMFSNCYKYNPPDHDVVAMARKLQDVFEFRYAKMPDEPLEPGPLPVSTAMP
PGLAKSSSESSSESSSESSSEEEEEDEEEEESESSDSEERAHRLAELQEQLRAVHEQLAALSQG
PISKPKRKREKKEKKKKA EKHRGRAGADEDDKGP RAPRPPQPKSKKASGSGGSAALGPSGFGPSGG
SGTKLPKATKTAPPALPTGYDSEEEESRMSYDEKRQLSLDINKLPGEKLRVVIHQAREPSLRDSN
PEEIEIDFETLKPSTLRELERVLSCLRKKPKPYTIKKPVGKTEELALEKKRELEKRLQDVSQQLNST
KKPPKAN EKTESSAQQVAVSRLSASSSSDSSSSSSSSSSSDTSDSDSG
```

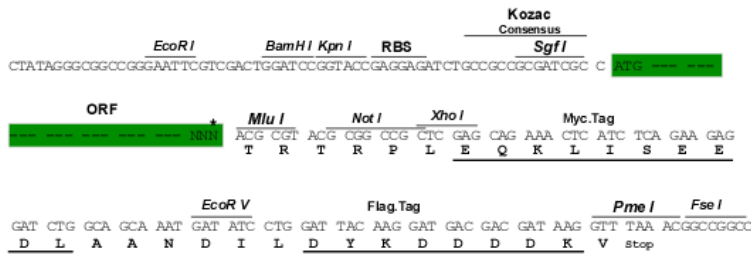
TRTRPLEQKLISEEDLAANDILDYKDDDDKV

Chromatograms: https://cdn.origene.com/chromatograms/mg4189_c09.zip

Restriction Sites: SgfI-MluI

Cloning Scheme:

Cloning sites used for ORF Shuttling:



* The last codon before the Stop codon of the ORF

ACCN: NM_005104

ORF Size: 2043 bp

OTI Disclaimer: Due to the inherent nature of this plasmid, standard methods to replicate additional amounts of DNA in E. coli are highly likely to result in mutations and/or rearrangements. Therefore, OriGene does not guarantee the capability to replicate this plasmid DNA. Additional amounts of DNA can be purchased from OriGene with batch-specific, full-sequence verification at a reduced cost. Please contact our customer care team at custsupport@origene.com or by calling 301.340.3188 option 3 for pricing and delivery.

The molecular sequence of this clone aligns with the gene accession number as a point of reference only. However, individual transcript sequences of the same gene can differ through naturally occurring variations (e.g. polymorphisms), each with its own valid existence. This clone is substantially in agreement with the reference, but a complete review of all prevailing variants is recommended prior to use. [More info](#)

OTI Annotation: This clone was engineered to express the complete ORF with an expression tag. Expression varies depending on the nature of the gene.

Components: The ORF clone is ion-exchange column purified and shipped in a 2D barcoded Matrix tube containing 10ug of transfection-ready, dried plasmid DNA (reconstitute with 100 ul of water).

Reconstitution Method:

1. Centrifuge at 5,000xg for 5min.
2. Carefully open the tube and add 100ul of sterile water to dissolve the DNA.
3. Close the tube and incubate for 10 minutes at room temperature.
4. Briefly vortex the tube and then do a quick spin (less than 5000xg) to concentrate the liquid at the bottom.
5. Store the suspended plasmid at -20°C. The DNA is stable for at least one year from date of shipping when stored at -20°C.

RefSeq Size: 4693 bp

RefSeq ORF: 2406 bp

Locus ID: 6046

UniProt ID: [P25440](#)

Cytogenetics: 6p21.32

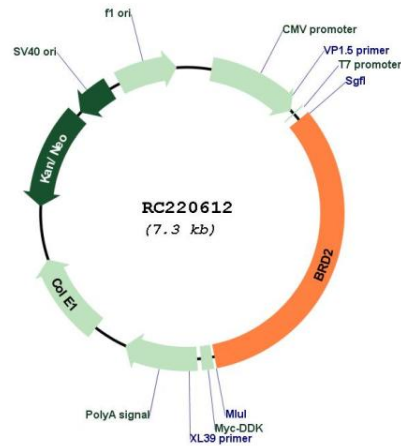
Domains: BROMO

Protein Families: Protein Kinase

MW: 74.88 kDa

Gene Summary:

This gene encodes a transcriptional regulator that belongs to the BET (bromodomains and extra terminal domain) family of proteins. This protein associates with transcription complexes and with acetylated chromatin during mitosis, and it selectively binds to the acetylated lysine-12 residue of histone H4 via its two bromodomains. The gene maps to the major histocompatibility complex (MHC) class II region on chromosome 6p21.3, but sequence comparison suggests that the protein is not involved in the immune response. This gene has been implicated in juvenile myoclonic epilepsy, a common form of epilepsy that becomes apparent in adolescence. Multiple alternatively spliced variants have been described for this gene. [provided by RefSeq, Dec 2010]

Product images:


Circular map for RC220612