

Product datasheet for **RC220609**

TEX13B (NM_031273) Human Tagged ORF Clone

Product data:

Product Type: Expression Plasmids
Product Name: TEX13B (NM_031273) Human Tagged ORF Clone
Tag: Myc-DDK
Symbol: TEX13B
Synonyms: TGC3B; TSGA5
Mammalian Cell Selection: Neomycin
Vector: pCMV6-Entry (PS100001)
E. coli Selection: Kanamycin (25 ug/mL)
ORF Nucleotide Sequence: >RC220609 representing NM_031273
 Red=Cloning site Blue=ORF Green=Tags(s)

TTTTGTAATACGACTCACTATAGGGCGGCCGGAATTCGTCGACTGGATCCGGTACCGAGGAGATCTGCC
 GCC**CGATCGCC**

ATGGCCTTGAGACCTGAGGACCCAGTAGTGGTTCCGGCACGGAAACGTGGTGGCCTTCATCATCGAGA
 AAATGGCCAGGCACACGAAAGGCCCGAGTTCTACTTCGAGAATATATCCTTATCCTGGGAGGAGGTGGA
 AGACAAGCTCAGGGCCATCCTGGAGGACAGCGAGGTGCCAGCGAGGTCAAAGAGGCCTGCACCTGGGGC
 AGCCTGGCCTTGGGTGTGCGCTTGGCCACAGGCAGGGGCAGTTACAAAACCGCAGGGTGCAGTGGCTGC
 AAGGCTTTGCCAAACTGCACAGATCAGTGCCTGGTCTTGGCCTCAAACCTGACGGAACCAAGGAACA
 GCAGGAGATGGAATGCAATGAGGCGACCTTCCAGTTGCAGCTAACCGAGACCAGCCTTGGCGAGGTGCAG
 AGAGAGCGGGACATGCTGAGATGGAAGCTTCCATGCCGAGCTGGCACCTCCCCAGGGACAGGGCCAGG
 CTACAGTGTTCAGGCCTGGCCACTGCCGAGGGGATTGGACAGAAGGAGCAGGTGAGCAGGAAAAGGA
 GGCGGTGGCTGCTGCTGGTGTGCTGGAGGAAAAGGAGAGGAGGATGCAGAGGCAGGGCCTGCCCC
 GCAGAGGTCTGCAGGGGCTGGGAGGAGCTCAGGCAGCCCCTCGGAGCTATTGTAGCAGGCAAATTAC
 ACCTTTGCGGGCAGAGGGAGAAAGATCTCAGGTCACTACAAACAGCCATGTCTGTCTTCTCTGGGCTTG
 GGTCCACAGTCTCACTGGAGCCTTCTCTGTCCAGCTCCCTACCTCATTACATACTCATACCCATGCC
 TTTGTCCGCTTCTCAGCCATACCAATATACCCCTTACCAGCAAAGGTACAGAAACGGGTTCCAAC
 CAGATGCCTTTCAACTGGGGGGCCTC

ACGCGTACGCGGCCGCTCGAGCAGAAACTCATCTCAGAAGAGGATCTGGCAGCAAATGATATCCTGGATT
 ACAAGGATGACGACGATAAGGTTTAA



[View online »](#)

Protein Sequence: >RC220609 representing NM_031273
Red=Cloning site Green=Tags(s)

MALRPEDPSSGFRHGNVAFIIEKMARHTKGPEFYFENISLSWEEVEDKLRAILEDSEVPSEVKEACTWG
 SLALGVRFahrqgqlqnrRVQLQGFakLHRSAALVlasNLTELKEQEMECNEATFQLQLTETSLAEVQ
 RERDMLRWKLFHAELAPPQGGQATVFPGLATAGGDWTEGAGEQEKEAVAAAGAAGGKGEERYAEAGPAP
 AEVLQGLGGGFRQPLGAIvAGKLHLcGAEGERSQVSTNSHVCLLWAWVHSLTGASSCPAPYLIIHILIPMP
 FVRLLSHTQYTPFTSKGHRTGSNSDAFQLGGL

TRTRPLEQKLISEEDLAANDILDYKDDDDKV

Chromatograms: https://cdn.origene.com/chromatograms/mk8042_c11.zip

Restriction Sites: SgfI-MluI

Cloning Scheme:



ACCN: NM_031273

ORF Size: 936 bp

OTI Disclaimer: The molecular sequence of this clone aligns with the gene accession number as a point of reference only. However, individual transcript sequences of the same gene can differ through naturally occurring variations (e.g. polymorphisms), each with its own valid existence. This clone is substantially in agreement with the reference, but a complete review of all prevailing variants is recommended prior to use. [More info](#)

OTI Annotation: This clone was engineered to express the complete ORF with an expression tag. Expression varies depending on the nature of the gene.

Components: The ORF clone is ion-exchange column purified and shipped in a 2D barcoded Matrix tube containing 10ug of transfection-ready, dried plasmid DNA (reconstitute with 100 ul of water).

Reconstitution Method:

1. Centrifuge at 5,000xg for 5min.
2. Carefully open the tube and add 100ul of sterile water to dissolve the DNA.
3. Close the tube and incubate for 10 minutes at room temperature.
4. Briefly vortex the tube and then do a quick spin (less than 5000xg) to concentrate the liquid at the bottom.
5. Store the suspended plasmid at -20°C. The DNA is stable for at least one year from date of shipping when stored at -20°C.

RefSeq: [NM_031273.2](#), [NP_112563.1](#)

RefSeq Size: 1247 bp

RefSeq ORF: 939 bp

Locus ID: 56156

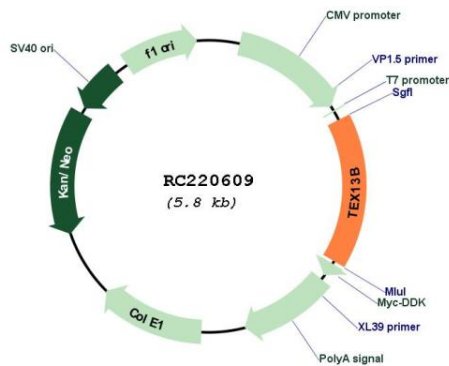
UniProt ID: [Q9BXU2](#)

Cytogenetics: Xq22.3

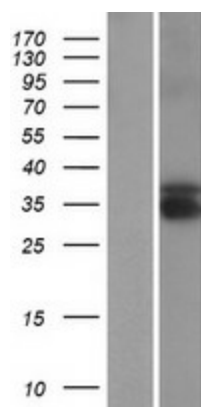
MW: 33.8 kDa

Gene Summary: This gene is similar to a mouse gene that is expressed in the testis. [provided by RefSeq, Jul 2008]

Product images:



Circular map for RC220609



Western blot validation of overexpression lysate (Cat# [LY410610]) using anti-DDK antibody (Cat# [TA50011-100]). Left: Cell lysates from untransfected HEK293T cells; Right: Cell lysates from HEK293T cells transfected with RC220609 using transfection reagent MegaTran 2.0 (Cat# [TT210002]).