

Product datasheet for **RC220608**

ZNF275 (NM_001080485) Human Tagged ORF Clone

Product data:

Product Type:	Expression Plasmids
Product Name:	ZNF275 (NM_001080485) Human Tagged ORF Clone
Tag:	Myc-DDK
Symbol:	ZNF275
Mammalian Cell Selection:	Neomycin
Vector:	pCMV6-Entry (PS100001)
E. coli Selection:	Kanamycin (25 ug/mL)



[View online »](#)

ORF Nucleotide Sequence:

>RC220608 representing NM_001080485
 Red=Cloning site Blue=ORF Green=Tags(s)

TTTTGTAATACGACTCACTATAGGGCGGCCGGAATTCGTCGACTGGATCCGGTACCGAGGAGATCTGCC
 GCC**GCGATCGCC**

ATGCCGTTGGTTGAATCTTTACATATTTTGAATTTGGAAGAAGAAGATAATTTATGGAAGACTGATG
 AGCCCTGGGAATCTTTACAGATTTGGTACATTTGATGATGTGGCATGGTACCTCACCACAAGGGAGTG
 GTTAAAGCTGGACCCTGAACAGAGGGCACTGGAATATTATGGAAACGTGACCTCTGTGGCGTTCCTGTT
 TAAATCTGCCTTGGTCCCTCACCTGGCACAAGGACAAGTGCTACTGGTGTGAGACCCATCGCCCAACA
 CTGATCTGTAAAGTACTCTGAAAGCACCTCCGCGACCCGACACCAGATGAAGGGGGAAGATGCCAGCC
 ACAGGAGATGGCGTCCACAAGCTTCCCAAGGGCCAGTGGTCCCAGTCTGAATTCAGACAGCAGGGGAC
 TCTGACGGGAAGAGAGGGAGCCACAGAATCTGCCATAGAACATCATTTTGCTTGTAAGAGTGTGGGG
 ACACCTTTGCGCTTAAAGTCTGCTTGTCCAGCACCAGAGAGTCCACAGTGAAGGAGAAGGGCTGGGAATG
 TGCGGACTGCGGGAAGGTCTTTAGGGGGTGGCGGAGTTAATGAGCACAGGAAAAGCCAGTAGCTGCC
 GAGCCCAAGCCCGCCAGTAGGGCCCTGGAGAATGCCGCGGAGAAGAGGGAGCAGATGGAGAGGGAGG
 CAAAGCCCTTCGAGTGGCAGGAGTGGGAAAACGGTTTAAAGAAGATGCAGGCCCTGAGTACGATCTGAG
 GGTCCACAGCAGAGAGAAGCCCTTTGATTGCGAGGAATGCCGGCGGTGTTCAAAGTCAACACCCACCTC
 TTCCGACATCAGAACTTACACTTCGGAAGGCTTTTCGCTGCAAGGCGTGCAGCAGGGATTTCTG
 ATCGCCAGGAGCTTCTCAAGCACCAGCGCATGCACACTGGCCACCTGCCCTTCGACTGCGACGACTGCGG
 CAAGTCTTCCGAGGGTCAACGGGCTGGCCGAGCACCAGCGCATCCACAGTGGGGCAAGCCATACGGG
 TGTCCCACTGCGCAAGCTCTTCCGAAGGAGCTCGGAGCTCACCAAGCACCAGGGATCCACACGGGCG
 AGAAGCCCTACGCTGCGGCCAGTGGGCAAGGCTTCCGCGAGAGCTCCAGCCTCTGGAGCAGCAGC
 CATCCACAGTGGCGAGCGCCCTACGCATGCGGCGAGTGTGGCAAGGCCCTTCCGTGGGCCCTCTGACCTC
 ATCAAGCACCAGCGCATCCACAGCGACTGAAACCCATGAGTGCACAAATGCCGCAAGGCCCTCCGCC
 GGAGCTCCGGCCTCAGTCCGACCCGGCGATCCACAGTGGGGCGCGGCTGCGAATGCAGCCAGTGTGG
 CCGCGTGTCAAGAGGCGCTCGGCACTGCAGAAGCATCAGCCAACCCACCACGAG

ACGCGTACGCGGCCGCTCGAGCAGAACTCATCTCAGAAGAGGATCTGGCAGCAATGATATCTGGATT
 ACAAGGATGACGACGATAAGGTTTAA

Protein Sequence:

>RC220608 representing NM_001080485
 Red=Cloning site Green=Tags(s)

MPVVESFTYFAIWKKKIIYGKTDEPWEFFQDLVTFDDVAWYLTREWFKLDPEQRALEYGNVTSVGV
 LNPALVPHLAQQVLLVSDPSPNTDPAKYSESTSATRHQMKGEDAQPEMASTSFPRASGPSPEFRQHG
 SDGKRGSPQNLPIEHFACKCEGDTFRLKVLVQHQRVHSEKGEWECGDCGKVFGRVAFNEHRKSHVAA
 EPQPGPSRALENAAEKREMERAKPFEECEGKRFFKKNAGLSQHRLRVHSREKPFDEECGRSFKVNT
 FRHQKLHTSEKPFACKACSRDFLDRQELLKHQRMHTGHLPFDCDDCGKSFGRVNGLAEHQRIHSGAK
 PYGCPHCGKLFRRSSELTKHRRITHTGEKPYACGQCGKAFRQSSSLEHARIHSGERPACGECGKA
 FRGPSDLIKHRRIHSGLKPYECDKCGKAFRRSSGLSRHRRIHSGARRCECSQGRVFKRRSALQKHQ
 PTHHE

TRTRPLEQKLISEEDLAANDILDYKDDDDKV

Chromatograms:

https://cdn.origene.com/chromatograms/mk8042_c12.zip

Restriction Sites:

Sgfl-Mlul

Cloning Scheme:


ACCN: NM_001080485

ORF Size: 1455 bp

OTI Disclaimer: The molecular sequence of this clone aligns with the gene accession number as a point of reference only. However, individual transcript sequences of the same gene can differ through naturally occurring variations (e.g. polymorphisms), each with its own valid existence. This clone is substantially in agreement with the reference, but a complete review of all prevailing variants is recommended prior to use. [More info](#)

OTI Annotation: This clone was engineered to express the complete ORF with an expression tag. Expression varies depending on the nature of the gene.

Components: The ORF clone is ion-exchange column purified and shipped in a 2D barcoded Matrix tube containing 10ug of transfection-ready, dried plasmid DNA (reconstitute with 100 ul of water).

Reconstitution Method:

1. Centrifuge at 5,000xg for 5min.
2. Carefully open the tube and add 100ul of sterile water to dissolve the DNA.
3. Close the tube and incubate for 10 minutes at room temperature.
4. Briefly vortex the tube and then do a quick spin (less than 5000xg) to concentrate the liquid at the bottom.
5. Store the suspended plasmid at -20°C. The DNA is stable for at least one year from date of shipping when stored at -20°C.

RefSeq: [NM_001080485.1](#), [NP_001073954.1](#)

RefSeq Size: 5080 bp

RefSeq ORF: 990 bp

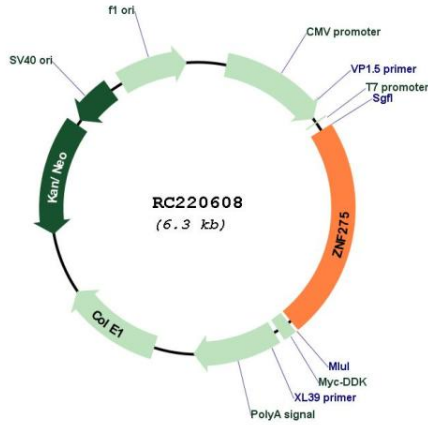
Locus ID: 10838

Cytogenetics: Xq28

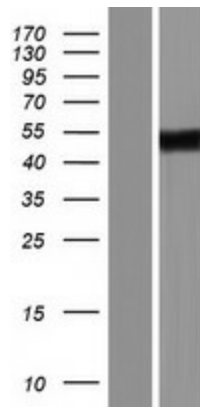
MW: 55.38 kDa

Gene Summary: This gene encodes a zinc finger protein that appears to be conserved in eutheria. Its function has not yet been established. [provided by RefSeq, Jul 2010]

Product images:



Circular map for RC220608



Western blot validation of overexpression lysate (Cat# [LY421040]) using anti-DDK antibody (Cat# [TA50011-100]). Left: Cell lysates from untransfected HEK293T cells; Right: Cell lysates from HEK293T cells transfected with RC220608 using transfection reagent MegaTran 2.0 (Cat# [TT210002]).