

Product datasheet for RC220604

Protein kinase like protein SgK493 (PKDCC) (NM_138370) Human Tagged ORF Clone

Product data:

Product Type:	Expression Plasmids
Product Name:	Protein kinase like protein SgK493 (PKDCC) (NM_138370) Human Tagged ORF Clone
Tag:	Myc-DDK
Symbol:	Protein kinase like protein SgK493
Synonyms:	RLSDF; SGK493; Vlk
Mammalian Cell Selection:	Neomycin
Vector:	pCMV6-Entry (PS100001)
E. coli Selection:	Kanamycin (25 ug/mL)
ORF Nucleotide Sequence:	>RC220604 ORF sequence Red=Cloning site Blue=ORF Green=Tags(s)

TTTTGTAATACGACTCACTATAGGGCGGCCGGAATTCGTCGACTGGATCCGGTACCGAGGAGATCTGCC
GCC**CGGATCGCC**

ATGGTGTCTGGAGCGGCTGCGGCACCCCAACGTGCTGCAGCTCTATGGCTACTGCTACCAGGACAGCG
AGGACATCCCAGACACCCTGACCACCATCACGGAGCTGGGCGCCCTGTAGAAATGATCCAGCTGCTGCA
AACTTCTGGGAGGATCGATTCCGAATCTGCCTGAGCCTGGGCGCCCTCCTCCACCCTGGCCACTCC
CCACTGGGCTCCGTCACCTCTGCTGGACTCCGCCCTCGGCAGTTTGTGCTGGTGGATGGGAGCTCAAAG
TGACGGACCTGGATGACGCACGTGTGGAGGAGACGCCGTGTGCAGGCAGCACCGACTGCATACTCGAGTT
TCCGGCCAGGAATTCACCCTGCCCTGCTCAGCCAGGGCTGGTGCAGGGCATGAACGAGAAGCGGAAC
CTCTATAATGCCTACAGTTTTTCTTCACATACCTCCTGCCTCACAGTGCCCGCCTTCACTGCGTCCTC
TGCTGGACAGCATCGTCAACGCCACAGGAGAGCTCGCCTGGGGGTGGACGAGACCCTGGCCAGCTGGA
GAAGGTGCTGCACCTGTACCGGAGCGGGCAGTATCTGCAGAACTCCACGGCAAGCAGCAGTACCGAGTAC
CAGTGTATCCCAGACAGCACCATCCCCAGGAAGACTACCGTGTGGCCATCCTACCACCACGGGAGCT
GCCTCCTTTCAGTGTTC AACCTGGCTGAGGCTGTGGATGTCTGTGAGAGCCATGCCAGTGTCCGGCCTT
TGTGGTACCAACCAGACCACCTGGACAGGTCGGCAGCTGGTCTTTTTCAAGACTGGATGGAGCCAAGTG
GTCCCTGATCCCAACAAGACCACATATGTGAAGCCTCTGGC

ACGCGTACGCGGCCGCTCGAGCAGAAACTCATCTCAGAAGAGGATCTGGCAGCAAATGATATCCTGGATT
ACAAGGATGACGACGATAAGGTTTAA



[View online »](#)

Protein Sequence: >RC220604 protein sequence
 Red=Cloning site Green=Tags(s)

MVLLERLRHPNVLQLYGICYQDSEDIPDTLTTITELGAPVEMIQLLQTSWEDRFRIICLSLGRLLHHLAHS
 PLGSVTLDFRPRQFVLVDGELKVTDLDDARVEETPCAGSTDCILEFPARNFTLPCSAQGWCEGMNEKRN
 LYNAYRFFFTYLLPHSAPPSLRPLLDSDIVNATGELAWGVDET LAQLEKVLHL YRSQGYLQNSTASSSTEY
 QCIPDSTIPQEDYRCWPSYHHGSCLLSVFNLAEAVDVCESHAQCRAFVVTNQTTWTGRQLVFFKTGWSQV
 VPDPNKTTYVKASG

TRTRPLEQKLISEEDLAANDILDYKDDDDKV

Chromatograms: https://cdn.origene.com/chromatograms/mk6599_h11.zip

Restriction Sites: SgfI-MluI

Cloning Scheme:



ACCN: NM_138370

ORF Size: 882 bp

OTI Disclaimer: The molecular sequence of this clone aligns with the gene accession number as a point of reference only. However, individual transcript sequences of the same gene can differ through naturally occurring variations (e.g. polymorphisms), each with its own valid existence. This clone is substantially in agreement with the reference, but a complete review of all prevailing variants is recommended prior to use. [More info](#)

OTI Annotation: This clone was engineered to express the complete ORF with an expression tag. Expression varies depending on the nature of the gene.

Components: The ORF clone is ion-exchange column purified and shipped in a 2D barcoded Matrix tube containing 10ug of transfection-ready, dried plasmid DNA (reconstitute with 100 ul of water).

Reconstitution Method:

1. Centrifuge at 5,000xg for 5min.
2. Carefully open the tube and add 100ul of sterile water to dissolve the DNA.
3. Close the tube and incubate for 10 minutes at room temperature.
4. Briefly vortex the tube and then do a quick spin (less than 5000xg) to concentrate the liquid at the bottom.
5. Store the suspended plasmid at -20°C. The DNA is stable for at least one year from date of shipping when stored at -20°C.

RefSeq: [NM_138370.1](#), [NP_612379.1](#)

RefSeq Size: 2517 bp

RefSeq ORF: 1482 bp

Locus ID: 91461

UniProt ID: [Q504Y2](#)

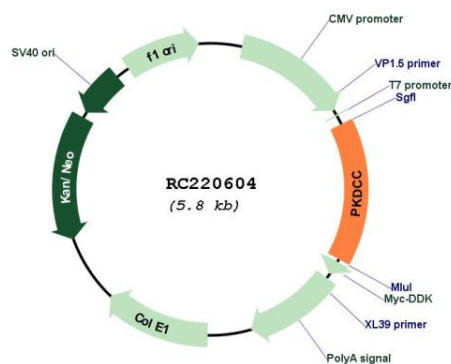
Cytogenetics: 2p21

Protein Families: Druggable Genome, Protein Kinase

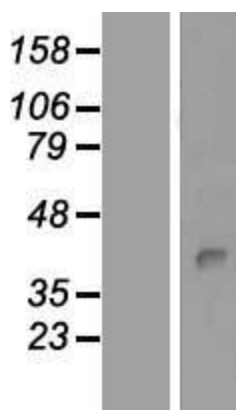
MW: 33.3 kDa

Gene Summary: Secreted tyrosine-protein kinase that mediates phosphorylation of extracellular proteins and endogenous proteins in the secretory pathway, which is essential for patterning at organogenesis stages. Mediates phosphorylation of MMP1, MMP13, MMP14, MMP19 and ERP29 (PubMed:25171405). Probably plays a role in platelets: rapidly and quantitatively secreted from platelets in response to stimulation of platelet degranulation (PubMed:25171405). May also have serine/threonine protein kinase activity. Required for longitudinal bone growth through regulation of chondrocyte differentiation. May be indirectly involved in protein transport from the Golgi apparatus to the plasma membrane (By similarity).[UniProtKB/Swiss-Prot Function]

Product images:



Circular map for RC220604



Western blot validation of overexpression lysate (Cat# [LY408639]) using anti-DDK antibody (Cat# [TA50011-100]). Left: Cell lysates from untransfected HEK293T cells; Right: Cell lysates from HEK293T cells transfected with RC220604 using transfection reagent MegaTran 2.0 (Cat# [TT210002]).