

Product datasheet for **RC220603**

DCAF8L1 (NM_001017930) Human Tagged ORF Clone

Product data:

Product Type:	Expression Plasmids
Product Name:	DCAF8L1 (NM_001017930) Human Tagged ORF Clone
Tag:	Myc-DDK
Symbol:	DCAF8L1
Synonyms:	WDR42B
Mammalian Cell Selection:	Neomycin
Vector:	pCMV6-Entry (PS100001)
E. coli Selection:	Kanamycin (25 ug/mL)



[View online »](#)

ORF Nucleotide Sequence:

>RC220603 representing NM_001017930
 Red=Cloning site Blue=ORF Green=Tags(s)

TTTTGTAATACGACTCACTATAGGGCGGCCGGAATTCGTCGACTGGATCCGGTACCGAGGAGATCTGCC
 GCC**CGCATCGCC**

ATGTCCCACCAAGAGGGCAGCACAGGTGGCTTACCAGACTTAGTGACTGAAAGCCTGTTACGAGCCAG
 AGGAGCAGTCTGGAGTAGCAGCGGTGACGGCGGCTCCTCAGACATTGAAATGGCAGCCACAGAGCCATC
 GACCGGAGATGGTGGTGATACCAGGGATGGTGGTTTCCTGAACGATGCCAGCACAGAAAAACAAACACA
 GACTCAGAAAAGTTCAAGTGAAGACGTCGAACCTGAAAGCATGGGTGAAGGTTTATTTGGTTACCCGTTAG
 TGGGAGAGGAGACAGAAAGGGAGGAGGAAGAAGAGATGGAGGAGGAAGGGGAGGAGGAAGAACAGCC
 TCGGATGTGTCCACGATGCGGTGGCACCAACCATGATCAGTGTGTTGTAGACGAGGATCAGGCGTTGGAG
 GAGTGGATTTCTCAGAGACATCTGCCCTGCCCGATCTCGTGGCAAGTCTTACTGCTCTTCGCCAGC
 GGCAGCTGGGTTCAAGTCCCGCTTTGTATATGAGGCCGTGGGGCAAGAACCTTTGTGCAGCGTTCCG
 CCTGCAGTATCTTCTGGAAGCCATGCCGTTCTGTCAGTACCACACTTTAACAGCGTGGCACCCGA
 CTGGCCAGTAGCGGTGATGACTTAAGGGTGATAGTGTGGGACTGGGTGCCGAGAAAGCCAGTACTGAACT
 TTGAGAGTGGTCACGATTAATGTCTATCCAGGCTAAGTTCTTTCTTAAGTGTGGTGATTCCACTCTGGC
 CATGTGTGGCCATGATGGACAGGTACGGGTAGCAGAACTAATTAATGCATCATATTGCGAGAATACTAAG
 CGTGTGGCCAAGCACAGGGGACCTGCCACGAGTTGGCTCTGGAGCCAGACTCTCCTTATAAGTTCTCA
 CTTCAGGTGAAGATGCCGTTGTGTTACCATGACCTCAGGCAAGACCGGCCAGCTTCAAAAAGTTGTGGT
 AACAGAGAAAATGATAAGAAAGTCGGACTGTATACTCTATGAATCCTGCCAATATTTACCAATTT
 GCAGTGGTGGACATGATCAGTTTGAAGATTTATGACCAGAGGAGAATTGATAAGAAAAGAAAACAATG
 GAGTACTCAAGAAATTCACTCCTCATCTGGTTTATTGTGATTTCCCAACAAACATCACCTGCGTTGT
 GTACAGCCACGATGGCACAGAGCTCCTGGCCAGCTACAATGATGAAGATATTTACCTCTTCAACTCTCT
 CTCAGTGTGGTCTCAATATGTTAAGAGATATAAGGGGCACAGAAATAATGACACAATCAATGTGTTA
 ATTTCTATGGCCCCGGAGTGAGTTTGTGCGTAGCGGTAGTGATTGTGGGCACGCTTCTTCTGGGAGAA
 ATCATCTCCAGATCATCCAGTTCATGGAGGGGACAGAGGAGATATAGTAAACTGTCTTGAACCCAC
 CCTTACCTACCTGTGTTGGCGACAGTGGCCTAGATCAGCATGTCAGGATCTGGACCCACAGCTAAAA
 CTGCCACTGAGCTTACTGGGTTAAAAGATGTGATTAAGAAGAACAAGCAGGAGCGAGATGAAGACA
 AACTTGAATACGGACTCGTTTGACAACCGCATGCTTCGGTCTTCGTGCGTCACTGTTACAGAGAGCTCAT
 CAACCCGCTGGAGAGATCATGGAGCTGAGTTCAGATGAAGAAGAGTTGGATGAGTCTCCAGCACCT
 CAGATACATCCGAGGAGGAGGGCCAAGATCGAGTGCAGTGCATACCATCC

ACGCGTACGCGGCCGCTCGAGCAGAAACTCATCTCAGAAGAGGATCTGGCAGCAAATGATATCCTGGATT
 ACAAGGATGACGACGATAAGGTTTAA

Protein Sequence:

>RC220603 representing NM_001017930
 Red=Cloning site Green=Tags(s)

MSHQEGSTGGLPDLVTESLFSPEEQSGVAAVTAASSDIEMAATEPSTGDGGDTRDGGFLNDASTENQNT
 DSESSSEDVELESMGGLFGYPLVGEETEREEEEEMEEEGEEEEQPRMCPRCGGTNHDQCLLDEDQALE
 EWISSETLSALPRSRWQVLTALRQRQLGSSARFVYEACGARTFVQRFRLQYLLGSHAGSVSTIHFNRGTR
 LASSGDDLRVIVWDWVRQKPVLFESGHDINVIQAKFFPNCGDSTLAMCGHDGQVRVAELINASYCENTK
 RVAKHRGPAHELALPEPSPYKFLTSGEDAVVFTIDLRQDRPASKVVVTRENDKKGVLTYTISMN PANIYQF
 AVGGHDQFVRIYDQRRIDKKENNGVLKKFPHHLVYCDFPTNITCVVYSHDGETELLASYNDEDIYLFNSS
 LSDGAQYVKRYKGRNNDTIKCVNFYGRSEFVVS GSDCGHVFFWEKSSSQIIQFMEGDRGDIVNCLPH
 PVL PVLATSGLDQHVRIWPTAKTATELTGLKDVIKKNKQEREDNLNYTDSFDNRMLRFFVRHLLQRAH
 QPGWRDHGAEFPEEELDESSSTSPTSEEEGQDRVQCIPS

TRTRPLEQKLISEEDLAANDILDYKDDDDKV

Chromatograms:

https://cdn.origene.com/chromatograms/mk8042_d01.zip

Restriction Sites: SgfI-MluI

Cloning Scheme:



ACCN: NM_001017930

ORF Size: 1800 bp

OTI Disclaimer: The molecular sequence of this clone aligns with the gene accession number as a point of reference only. However, individual transcript sequences of the same gene can differ through naturally occurring variations (e.g. polymorphisms), each with its own valid existence. This clone is substantially in agreement with the reference, but a complete review of all prevailing variants is recommended prior to use. [More info](#)

OTI Annotation: This clone was engineered to express the complete ORF with an expression tag. Expression varies depending on the nature of the gene.

Components: The ORF clone is ion-exchange column purified and shipped in a 2D barcoded Matrix tube containing 10ug of transfection-ready, dried plasmid DNA (reconstitute with 100 ul of water).

- Reconstitution Method:
1. Centrifuge at 5,000xg for 5min.
 2. Carefully open the tube and add 100ul of sterile water to dissolve the DNA.
 3. Close the tube and incubate for 10 minutes at room temperature.
 4. Briefly vortex the tube and then do a quick spin (less than 5000xg) to concentrate the liquid at the bottom.
 5. Store the suspended plasmid at -20°C. The DNA is stable for at least one year from date of shipping when stored at -20°C.

RefSeq: [NM_001017930.2](#)

RefSeq Size: 3457 bp

RefSeq ORF: 1803 bp

Locus ID: 139425

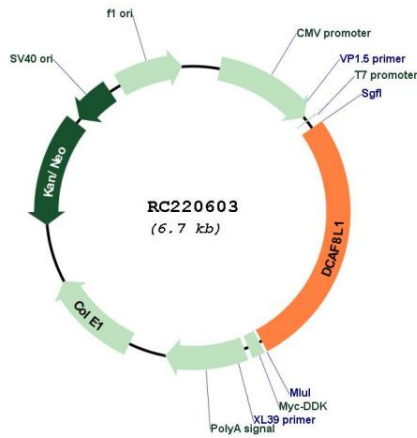
UniProt ID: [A6NGE4](#)

Cytogenetics: Xp21.3

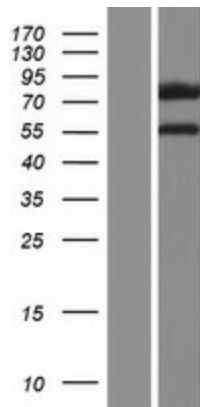
MW: 67.2 kDa

Gene Summary: This gene encodes a member of the WD repeat protein family. WD repeats are minimally conserved regions of approximately 40 amino acids typically bracketed by Gly-His and Trp-Asp (GH-WD), which may facilitate the formation of heterotrimeric or multi-protein complexes. Members of this family are involved in a variety of cellular processes, including cell cycle progression, signal transduction, apoptosis, and gene regulation. This gene appears to represent an intronless retrocopy of a related multi-exon gene located on chromosome 1. However, the CDS of this intronless gene remains intact, it is conserved in other primate species, it is known to be transcribed, and it is therefore thought to encode a functional protein. [provided by RefSeq, May 2010]

Product images:



Circular map for RC220603



Western blot validation of overexpression lysate (Cat# [LY422759]) using anti-DDK antibody (Cat# [TA50011-100]). Left: Cell lysates from untransfected HEK293T cells; Right: Cell lysates from HEK293T cells transfected with RC220603 using transfection reagent MegaTran 2.0 (Cat# [TT210002]).