

Product datasheet for **RC220602**

LC3C (MAP1LC3C) (NM_001004343) Human Tagged ORF Clone

Product data:

Product Type: Expression Plasmids
Product Name: LC3C (MAP1LC3C) (NM_001004343) Human Tagged ORF Clone
Tag: Myc-DDK
Symbol: LC3C
Synonyms: ATG8J; LC3C
Mammalian Cell Selection: Neomycin
Vector: pCMV6-Entry (PS100001)
E. coli Selection: Kanamycin (25 ug/mL)
ORF Nucleotide Sequence: >RC220602 ORF sequence
 Red=Cloning site Blue=ORF Green=Tags(s)

TTTTGTAATACGACTCACTATAGGGCGCCGGGAATTCGTCGACTGGATCCGGTACCGAGGAGATCTGCC
GCC**CGATCGCC**

ATGCCGCCTCCACAGAAAATCCCAAGCGTCAGACCCTTCAAGCAGAGGAAAAGCTTGGCAATCAGACAAG
AGGAAGTTGCTGGAATCCGGGCAAAGTTCCCAACAAAATCCCGTGGTAGTGGAGCGCTACCCAGGGA
GACGTTCTGCCCCGCTGGACAAAACCAAGTTCTGGTCCCGCAGGAGCTGACCATGACCCAGTTCCTC
AGCATCATCCGGAGCCGATGGTCTGAGAGCCACGGAAGCCTTTACTTGTGGTGAACAACAAGACCC
TGGTCAGCATGAGCGCAACCATGGCAGAGATCTACAGAGACTACAAGGATGAGGATGGCTTCGTGTACAT
GACCTACGCTCCAGGAGACATTTGGCTGCCTGGAGTCAGCAGCCCCAGGGATGGGAGCAGCCTTGAG
GACAGACCCTGCAATCCTCTC

ACGCGTACGCGGCCGCTCGAGCAGAACTCATCTCAGAAGAGGATCTGGCAGCAAATGATATCCTGGATT
ACAAGGATGACGACGATAAGGTTTAA

Protein Sequence: >RC220602 protein sequence
 Red=Cloning site Green=Tags(s)

MPPQKIPSVRPFKQRKSLAIRQEEVAGIRAKFPNKIPVVVERYPRETFLPPLDKTKFLVPQELTMTQFL
SIIRSRMVLRAEAFYLLVNNKSLVMSATMAE IYRDYKDEDGFVYMTYASQETFGCLESAAPRDGSSLE
DRPCNPL

TRTRPLEQKLISEEDLAANDILDYKDDDDKV

Chromatograms: https://cdn.origene.com/chromatograms/mk6471_c05.zip



[View online »](#)

Restriction Sites: SgfI-MluI

Cloning Scheme:



ACCN: NM_001004343

ORF Size: 441 bp

OTI Disclaimer: The molecular sequence of this clone aligns with the gene accession number as a point of reference only. However, individual transcript sequences of the same gene can differ through naturally occurring variations (e.g. polymorphisms), each with its own valid existence. This clone is substantially in agreement with the reference, but a complete review of all prevailing variants is recommended prior to use. [More info](#)

OTI Annotation: This clone was engineered to express the complete ORF with an expression tag. Expression varies depending on the nature of the gene.

Components: The ORF clone is ion-exchange column purified and shipped in a 2D barcoded Matrix tube containing 10ug of transfection-ready, dried plasmid DNA (reconstitute with 100 ul of water).

Reconstitution Method:

1. Centrifuge at 5,000xg for 5min.
2. Carefully open the tube and add 100ul of sterile water to dissolve the DNA.
3. Close the tube and incubate for 10 minutes at room temperature.
4. Briefly vortex the tube and then do a quick spin (less than 5000xg) to concentrate the liquid at the bottom.
5. Store the suspended plasmid at -20°C. The DNA is stable for at least one year from date of shipping when stored at -20°C.

RefSeq: [NM_001004343.3](#)

RefSeq Size: 1192 bp

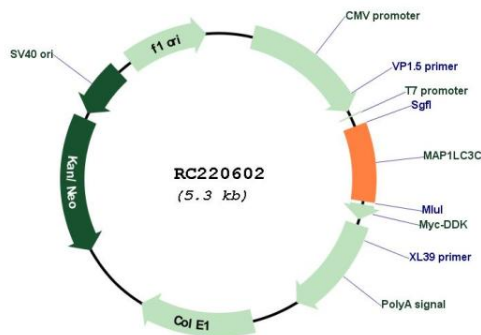
RefSeq ORF: 444 bp

Locus ID: 440738

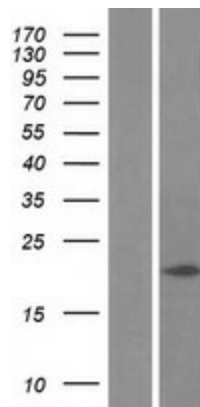
UniProt ID: [Q9BXW4](#)
 Cytogenetics: 1q43
 MW: 16.9 kDa

Gene Summary: Autophagy is a highly regulated bulk degradation process that plays an important role in cellular maintenance and development. MAP1LC3C is an ortholog of the yeast autophagosome protein Atg8 (He et al., 2003 [PubMed 12740394]).[supplied by OMIM, Nov 2010]

Product images:



Circular map for RC220602



Western blot validation of overexpression lysate (Cat# [LY423737]) using anti-DDK antibody (Cat# [TA50011-100]). Left: Cell lysates from untransfected HEK293T cells; Right: Cell lysates from HEK293T cells transfected with RC220602 using transfection reagent MegaTran 2.0 (Cat# [TT210002]).