

Product datasheet for **RC220601**

C1orf192 (CFAP126) (NM_001013625) Human Tagged ORF Clone

Product data:

Product Type: Expression Plasmids
Product Name: C1orf192 (CFAP126) (NM_001013625) Human Tagged ORF Clone
Tag: Myc-DDK
Symbol: C1orf192
Synonyms: C1orf192; Flattop; Fltp
Mammalian Cell Selection: Neomycin
Vector: pCMV6-Entry (PS100001)
E. coli Selection: Kanamycin (25 ug/mL)
ORF Nucleotide Sequence: >RC220601 representing NM_001013625
Red=Cloning site Blue=ORF Green=Tags(s)

TTTTGTAATACGACTCACTATAGGGCGCCGGGAATTCGTCGACTGGATCCGGTACCGAGGAGATCTGCC
GCC**CGATCGCC**

ATGGCCACTAACTACAGTGCCAACCAAGTATGAAAAGGCTTTCTCATCCAAGTATCTGCAGAACTGGTCTC
CCACTAAGCCAACAAAAGAGAGCATCTCTTCATGAAGGCTACACTCAAATTATTGCCAACGATCGTGG
TCATCTACTGCCTTCTGTGCCCGTTCCAAGGCAAATCCTTGGGGTTCCTCATGGGCACCTGGCAAATG
CCTCTGAAGATACCCCTGCTCGGGTGACCTGACCTCCCGTACAAGTGTGGTGTCTGCCCTCCCTACCA
AATGGATACAGAAAAATCCTGATTTACTCAAGGCTCCAATGGGCTGTGTCTGAAATCTTAGGCAAGCC
CCATGATCCAGACAGTCAGAAGAACTCAGAAAGAAGTCTATCACAAGACTGTACAACAAGCACGAAGT
CCAACCATAATTCCAAGCTCCCCAGCTGCCAACCTCAATCCCCAGATGAACTCCAAAGCTCACACCCCT
CTGCAGGTCATACTCCAGGTCCCCAAAGACCAGCCAAATCC

ACGCGTACGCGGCCGCTCGAGCAGAACTCATCTCAGAAGAGGATCTGGCAGCAAATGATATCCTGGATT
ACAAGGATGACGACGATAAGGTTTAA

Protein Sequence: >RC220601 representing NM_001013625
Red=Cloning site Green=Tags(s)

MATNYSANQYEKAFSSKYLQNSPTKPTKESISSHEGYTQIIANDRGHLLPSVPRSKANPWGSFMGTWQM
PLKIPPARVTLTSRTTAGAASLTKWIQKNPDLLKASNGLCPEILGKPHDPDSQKLRKKSITKTVQQARS
PTIIPSSPAANLNSPDELQSSHPSAGHTPGPQRPAAKS

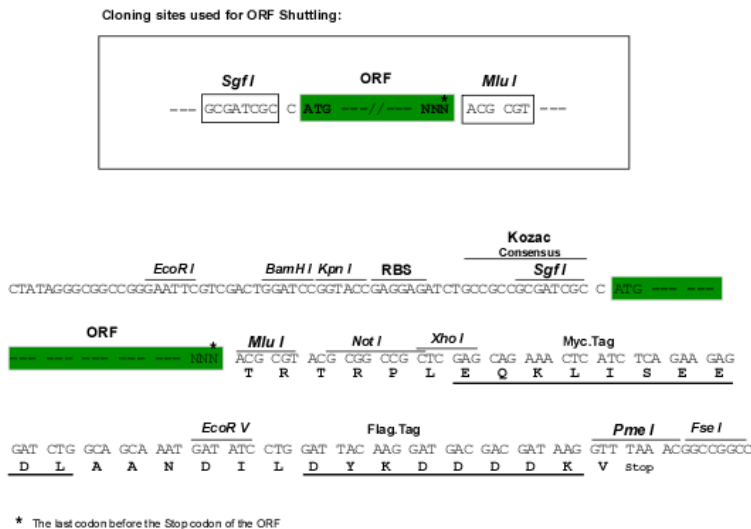
TRTRPLEQKLISEEDLAANDILDYKDDDDKV

Chromatograms: https://cdn.origene.com/chromatograms/mk8042_d02.zip



Restriction Sites: SgfI-MluI

Cloning Scheme:



ACCN: NM_001013625

ORF Size: 531 bp

OTI Disclaimer: The molecular sequence of this clone aligns with the gene accession number as a point of reference only. However, individual transcript sequences of the same gene can differ through naturally occurring variations (e.g. polymorphisms), each with its own valid existence. This clone is substantially in agreement with the reference, but a complete review of all prevailing variants is recommended prior to use. [More info](#)

OTI Annotation: This clone was engineered to express the complete ORF with an expression tag. Expression varies depending on the nature of the gene.

Components: The ORF clone is ion-exchange column purified and shipped in a 2D barcoded Matrix tube containing 10ug of transfection-ready, dried plasmid DNA (reconstitute with 100 ul of water).

Reconstitution Method:

1. Centrifuge at 5,000xg for 5min.
2. Carefully open the tube and add 100ul of sterile water to dissolve the DNA.
3. Close the tube and incubate for 10 minutes at room temperature.
4. Briefly vortex the tube and then do a quick spin (less than 5000xg) to concentrate the liquid at the bottom.
5. Store the suspended plasmid at -20°C. The DNA is stable for at least one year from date of shipping when stored at -20°C.

RefSeq: [NM_001013625.4](#)

RefSeq Size: 774 bp

RefSeq ORF: 534 bp

Locus ID: 257177

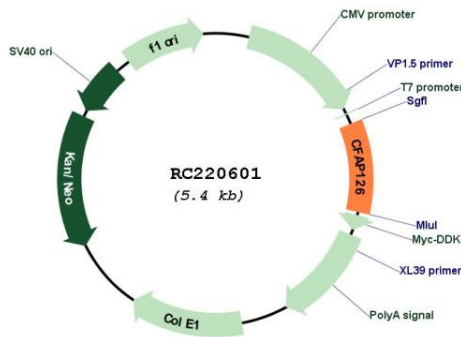
UniProt ID: [Q5VTH2](#)

Cytogenetics: 1q23.3

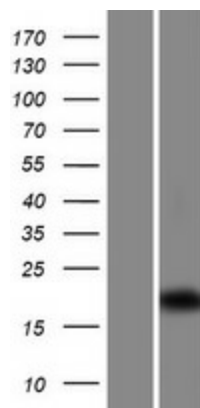
MW: 19.1 kDa

Gene Summary: Acts as a regulator of cilium basal body docking and positioning in mono- and multiciliated cells. Regulates basal body docking and cilia formation in multiciliated lung cells. Regulates kinocilium positioning and stereocilia bundle morphogenesis in the inner ear. [UniProtKB/Swiss-Prot Function]

Product images:



Circular map for RC220601



Western blot validation of overexpression lysate (Cat# [LY422987]) using anti-DDK antibody (Cat# [TA50011-100]). Left: Cell lysates from untransfected HEK293T cells; Right: Cell lysates from HEK293T cells transfected with RC220601 using transfection reagent MegaTran 2.0 (Cat# [TT210002]).