

## Product datasheet for RC220600

### c Abl (ABL1) (NM\_005157) Human Tagged ORF Clone

#### Product data:

Product Type:	Expression Plasmids
Product Name:	c Abl (ABL1) (NM_005157) Human Tagged ORF Clone
Tag:	Myc-DDK
Symbol:	c Abl
Synonyms:	ABL; BCR-ABL; bcr/abl; c-ABL; c-ABL1; CHDSKM; JTK7; p150; v-abl
Mammalian Cell Selection:	Neomycin
Vector:	pCMV6-Entry (PS100001)
E. coli Selection:	Kanamycin (25 ug/mL)
ORF Nucleotide Sequence:	>RC220600 representing NM_005157 Red=Cloning site Blue=ORF Green=Tags(s)

TTTTGTAATACGACTCACTATAGGGCGGCCGGAATTCGTCGACTGGATCCGGTACCGAGGAGATCTGCC  
GCCCGCATCGCC

ATGTTGGAGATCTGCCTGAAGCTGGTGGGCTGCAATCCAAGAAGGGGCTGTCCTCGTCTCCAGCTGTT  
ATCTGGAAGAAGCCCTTCAGCGGCCAGTAGCATCTGACTTTGAGCCTCAGGGTCTGAGTGAAGCCGCTCG  
TTGGAAGTCCAAGGAAAACCTTCTCGTGGACCCAGTAAAATGACCCCAACCTTTTCGTTGCACTGTAT  
GATTTTGTGGCCAGTGGAGATAACTCTAAGCATAACTAAAGGTGAAAAGCTCCGGGTCTTAGGCTATA  
ATCACAATGGGGAATGGTGTGAAGCCCAAAACAAAATGGCCAAGGCTGGTCCCAAGCAACTACATCAC  
GCCAGTCAACAGTCTGGAGAAACTCCTGGTACCATGGGCTGTGTCCCGCAATGCCGCTGAGTATCTG  
CTGAGCAGCGGGATCAATGGCAGCTTCTTGGTGCCTGAGAGTGAAGCAGTCTGCCCAGAGGTCATCT  
CGCTGAGATACGAAGGGAGGGTGTACCATTACAGGATCAACACTGCTTCTGATGGCAAGCTCTACGTCTC  
CTCCGAGAGCCGCTTCAACACCCGGCCGAGTTGGTTCATCATCATTCAACGGTGGCCGACGGGCTCATC  
ACCACGCTCCATTATCCAGCCCCAAGCGCAACAAGCCCACTGTCTATGGTGTGTCCCCAACTACGACA  
AGTGGGAGATGGAACGCACGGACATCACCATGAAGCACAAGCTGGGCGGGGGCCAGTACGGGGAGGTGTA  
CGAGGGCGTGTGGAAGAAATACAGCCTGACGGTGGCCGTGAAGACCTTGAAGGAGGACACCATGGAGGTG  
GAAGAGTTCTTGAAGAAGCTGCAGTCATGAAAGAGATCAAACACCCTAACCTGGTGCAGTCTCTGGGG  
TCTGCACCCGGGAGCCCCGTTCTATATCACTGAGTTCATGACCTACGGGAACCTCCTGGACTACCT  
GAGGGAGTGCAACCGGCAGGAGGTGAACGCCGTGGTGTGCTGTACATGGCCACTCAGATCTCGTAGCC  
ATGGAGTACCTGGAGAAGAAAACCTTCCACAGAGATCTTGGTGCAGGAACTGCCTGGTAGGGGAGA  
ACCACTTGGTGAAGGTAGCTGATTTGGCCTGAGCAGGTTGATGACAGGGGACACCTACACAGCCCATGC  
TGGAGCCAAGTCCCATCAAATGGACTGCACCCGAGAGCCTGGCCTACAACAAGTCTCCATCAAGTCC  
GACGTCTGGCATTGGAGTATTGCTTTGGAAATTGCTACCTATGGCATGTCCCTTACCCGGGAATTG  
ACCTGTCCAGGTGTATGAGCTGCTAGAGAAGGACTACCGCATGGAGCGCCAGAAGGCTGCCAGAGAA  
GGTCTATGAACATGCGAGCATGTTGGCAGTGAATCCCTCTGACCGGCCCTCCTTTGCTGAAATCCAC



[View online >](#)

CAAGCCTTTGAAACAATGTTCCAGGAATCCAGTATCTCAGACGAAGTGGAAAAGGAGCTGGGGAACAAG  
GCGTCCGTGGGGCTGTGAGTACCTTGCTGCAGGCCAGAGCTGCCACCAAGACGAGGACCTCCAGGAG  
AGCTGCAGAGCACAGAGACCACTGACGTGCCTGAGATGCCTCACTCCAAGGGCCAGGGAGAGCGAT  
CCTCTGGACCATGAGCCTGCCGTGTCTCCATTGCTCCCTCGAAAAGAGCGAGGTCCCCGGAGGGCGGCC  
TGAATGAAGATGAGCGCCTTCTCCCAAAGACAAAAGACCAACTGTTTCAGCGCCTTGATCAAGAAGAA  
GAAGAAGACAGCCCCAACCCCTCCCAAACGCAGCAGCTCCTTCCGGGAGATGGACGGCCAGCCGGAGCGC  
AGAGGGCCGGCGAGGAAGAGGGCCGAGACATCAGCAACGGGGCACTGGCTTTACCCCCCTTGGACACAG  
CTGACCCAGCCAAGTCCCAAAGCCCAGCAATGGGGCTGGGGTCCCAATGGAGCCCTCCGGGAGTCCGG  
GGGCTCAGGCTTCCGGTCTCCCCACCTGTGGAAGAAGTCCAGCACGCTGACCAGCAGCCGCTAGCCACC  
GGCGAGGAGGAGGGCGGTGGCAGCTCCAGCAAGCGCTTCTGCGCTTGTCTCCGCTCCTGCGTCCCC  
ATGGGGCCAAGGACACGGAGTGGAGGTCAGTCACGCTGCCTCGGGACTTGACGTCCACGGGAAGACAGTT  
TGACTCGTCCACATTTGGAGGGCACAAAAGTGAGAAGCCGGCTCTGCCTCGGAAGAGGGCAGGGGAGAAC  
AGGTCTGACCAGGTGACCCGAGGCACAGTAACGCCTCCCCCAGGCTGGTAAAAAGAATGAGGAAGCTG  
CTGATGAGGTCTTCAAAGACATCATGGAGTCCAGCCGGGCTCCAGCCCGCCAACTGACTCCAAAACC  
CCTCCGGCGGCAGGTACCGTGGCCCTGCCTCGGGCCTCCCCACAAGGAAGAAGTGGAAAGGGCAGT  
GCCTTAGGGACCCCTGCTGCAGCTGAGCCAGTGACCCCAACAGCAAAGCAGGCTCAGGTGACCCAGGGG  
GCACCAGCAAGGGCCCCCGGAGGAGTCCAGAGTGAGGAGGCACAAGCACTCCTCTGAGTCGCCAGGGAG  
GGACAAGGGGAAATTGTCCAGGCTCAAACCTGCCCGCCGCCCAACAGCAGCCTTGCAGGGAAGGCT  
GGAGGAAAGCCCTCGCAGAGCCCGAGCCAGGAGGGCGCCGGGGAGGCAGTCTGGGCGCAAAGACAAAAG  
CCACGAGTCTGGTTGATGCTGTGAACAGTGACGCTGCCAAGCCAGCCAGCCGGGAGAGGGCCTCAAAA  
GCCCGTGTCCCGGCCACTCAAAGCCACAGTCCGCCAAGCCGTCGGGGACCCCAATCAGCCAGCCCCC  
GTTCCCTCCACGTTGCCATCAGCATCCTCGGCCCTGGCAGGGGACCAGCCGTCTTCCACCGCCTTCATCC  
CTCTCATATCAACCCGAGTGTCTTTTCGAAAACCCGCCAGCCTCCAGAGCGGATCGCCAGCGGGCCAT  
CACCAAGGGCGTGGTCTTGGACAGCACCGAGGCCTGTGCCTCGCCATCTCTAGGAACTCCGAGCAGATG  
GCCAGCCACAGCGCAGTCTGGAGGCGGCAAAAACCTCTACACGTTCTGCGTGAGCTATGTGGATTCCA  
TCCAGCAAATGAGGAACAAGTTTGCCTTCCGAGAGGCCATCAACAAACTGGAGAATAATCTCCGGGAGCT  
TCAGATCTGCCCGGCACAGCAGGCAGTGGTCCAGCGGCCACTCAGGACTTACGCAAGCTCCTCAGTTCC  
GTGAAGGAAATCAGTGACATAGTGCAGAGG

ACGGTACGCGGCCGCTCGAGCAGAACTCATCTCAGAAGAGGATCTGGCAGCAAATGATATCTGGATT  
ACAAGGATGACGACGATAAGGTTTAA

Protein Sequence: >RC220600 representing NM\_005157  
 Red=Cloning site Green=Tags(s)

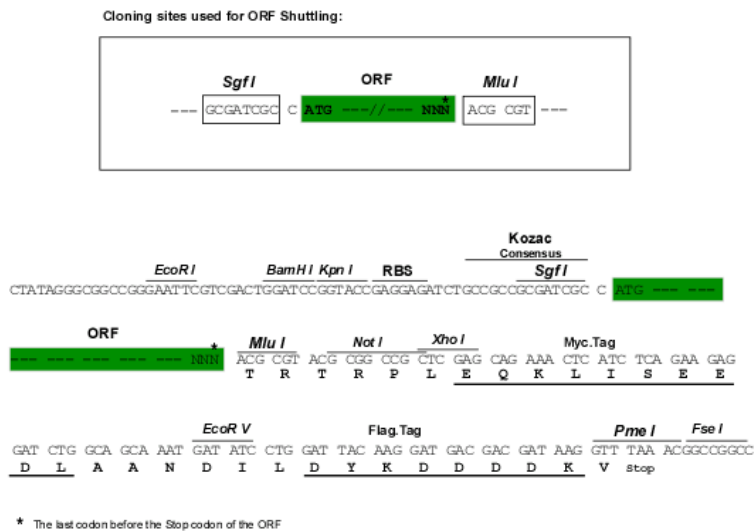
MLEIICKLVGCKSKKGLSSSSCYLEEALQRPVASFEPQGLSEARWNSKENLLAGPSENDPNLFVALY  
 DFVASGDNTLSITKGEKLRVLGYNHNGEWCEAQTKNQGWPVSNYITPVNSLEKHSWYHGVPVSRNAAEYL  
 LSSGINGSFLVRESESSPGQRSISLRYEGRVYHYRINTASDGKLYVSSSRFNTLAEVHHHSTVADGLI  
 TTLHYAPKRNKPTVYGVSPNYDKWEMERTDITMKHKLGGGQYGEVYEGVWKKYSLTVAVKTLKEDTMEV  
 EEFLKEAAVMKEIKHPNLVQLLGVCTREPPFYIITEFMTYGNLLDYLRECNRQEVNAVVLVLYMATQISSA  
 MEYLEKKNFIHRDLAARNCLVGENHLVKVADFGLSRLMTGDTYTAHAGAKFPKWTAPESLAYNKF SIKS  
 DVWAFGVLLWEIATYGMSPYPGIDL SQVYELLEKDYRMERPEGCPEKVYELMRACWQWNPDRPSFAEIH  
 QAFETMFQESSISDEVEKELGKQVIRGAVSTLLQAPLPTKTRTSRRAAEHRDITDVPMPHSGKQGESD  
 PLDHEPAVSPLLPRKERGPPEGLNEDERLLPKDKKTNLFSALIKKKKTAPTPPKRSSSFREMDGQPER  
 RGAGEEGRDISNGALAF TPLDTADPAKSPKPSNGAGVPNGALRESGGSGFRSPHLWKKSSLTSSRLAT  
 GEEEGGSSSKRFLRSCSASCVPHGAKDTEWRSVTLPRDLQSTGRQFDSSTFGGHKSEKALPRKRAGEN  
 RSDQVTRGTVTPPPRLVKKNEEADEVFKDIMESSPGSSPPNLTPKPLRRQVTVAPASGLPHKEEAGKGS  
 ALGTPAAAEVPTPTSKAGSGAPGGT SKGPAEESVRRHKHSSSPGRDKGLSRLKPAPPPPPAASAGKA  
 GKPSQSPSQEAAGEAVLGAKTKATSLVDAVNSDAAKPSQPGGLKPKVLPATPKPQSAKPSGTPISPAP  
 VPSTLPSASSALAGDQPSSTAFIPLISTRVSLRKTRQPPERIASGAIKGVVLDSTEALCLAISRNSEQM  
 ASHAVLEAGKNLYTFCVSYVDSIQQMRNKFAFREAINKLENNLRELQICPATAGSGPAATQDFSKLLSS  
 VKEISDIVQR

TRTRPLEQKLISEEDLAANDILDYKDDDDKV

Chromatograms: [https://cdn.origene.com/chromatograms/mg2686\\_f05.zip](https://cdn.origene.com/chromatograms/mg2686_f05.zip)

Restriction Sites: SgfI-MluI

Cloning Scheme:

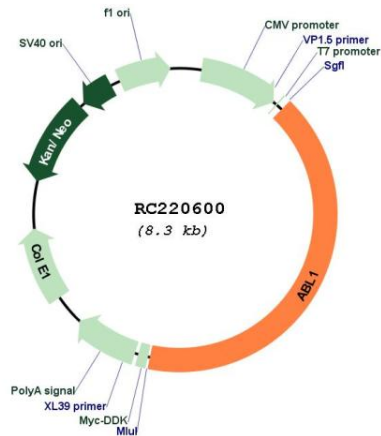


ACCN: NM\_005157

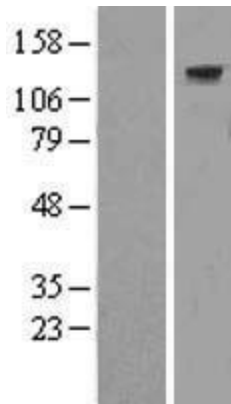
ORF Size: 3390 bp

<b>OTI Disclaimer:</b>	The molecular sequence of this clone aligns with the gene accession number as a point of reference only. However, individual transcript sequences of the same gene can differ through naturally occurring variations (e.g. polymorphisms), each with its own valid existence. This clone is substantially in agreement with the reference, but a complete review of all prevailing variants is recommended prior to use. <a href="#">More info</a>
<b>OTI Annotation:</b>	This clone was engineered to express the complete ORF with an expression tag. Expression varies depending on the nature of the gene.
<b>Components:</b>	The ORF clone is ion-exchange column purified and shipped in a 2D barcoded Matrix tube containing 10ug of transfection-ready, dried plasmid DNA (reconstitute with 100 ul of water).
<b>Reconstitution Method:</b>	<ol style="list-style-type: none"><li>1. Centrifuge at 5,000xg for 5min.</li><li>2. Carefully open the tube and add 100ul of sterile water to dissolve the DNA.</li><li>3. Close the tube and incubate for 10 minutes at room temperature.</li><li>4. Briefly vortex the tube and then do a quick spin (less than 5000xg) to concentrate the liquid at the bottom.</li><li>5. Store the suspended plasmid at -20°C. The DNA is stable for at least one year from date of shipping when stored at -20°C.</li></ol>
<b>RefSeq:</b>	<a href="#">NM_005157.6</a>
<b>RefSeq Size:</b>	5384 bp
<b>RefSeq ORF:</b>	3393 bp
<b>Locus ID:</b>	25
<b>UniProt ID:</b>	<a href="#">P00519</a>
<b>Cytogenetics:</b>	9q34.12
<b>Protein Families:</b>	Druggable Genome, Protein Kinase, Transcription Factors
<b>Protein Pathways:</b>	Axon guidance, Cell cycle, Chronic myeloid leukemia, ErbB signaling pathway, Neurotrophin signaling pathway, Pathogenic Escherichia coli infection, Pathways in cancer, Viral myocarditis
<b>MW:</b>	122.7 kDa
<b>Gene Summary:</b>	This gene is a protooncogene that encodes a protein tyrosine kinase involved in a variety of cellular processes, including cell division, adhesion, differentiation, and response to stress. The activity of the protein is negatively regulated by its SH3 domain, whereby deletion of the region encoding this domain results in an oncogene. The ubiquitously expressed protein has DNA-binding activity that is regulated by CDC2-mediated phosphorylation, suggesting a cell cycle function. This gene has been found fused to a variety of translocation partner genes in various leukemias, most notably the t(9;22) translocation that results in a fusion with the 5' end of the breakpoint cluster region gene (BCR; MIM:151410). Alternative splicing of this gene results in two transcript variants, which contain alternative first exons that are spliced to the remaining common exons. [provided by RefSeq, Aug 2014]

Product images:



Circular map for RC220600



Western blot validation of overexpression lysate (Cat# [LY417477]) using anti-DDK antibody (Cat# [TA50011-100]). Left: Cell lysates from untransfected HEK293T cells; Right: Cell lysates from HEK293T cells transfected with RC220600 using transfection reagent MegaTran 2.0 (Cat# [TT210002]).