

Product datasheet for **RC220591**

TUBD1 (NM_016261) Human Tagged ORF Clone

Product data:

Product Type:	Expression Plasmids
Product Name:	TUBD1 (NM_016261) Human Tagged ORF Clone
Tag:	Myc-DDK
Symbol:	TUBD1
Synonyms:	TUBD
Mammalian Cell Selection:	Neomycin
Vector:	pCMV6-Entry (PS100001)
E. coli Selection:	Kanamycin (25 ug/mL)



[View online »](#)

ORF Nucleotide Sequence:

>RC220591 representing NM_016261
 Red=Cloning site Blue=ORF Green=Tags(s)

TTTTGTAATACGACTCACTATAGGGCGGCCGGAATTCGTCGACTGGATCCGGTACCGAGGAGATCTGCC
 GCC**CGATCGCC**

ATGTCAATTGTAACAGTGAACCTTGGTCAGTGTGGCAATCAGATTGGTTTTGAAGTTTTGATGCTTTGCT
 TTAGTGACTCACACAGTTCCAGGGACTCTGCTCTATGAGAGAGAATGAGGCATATCAAGCATCTTGCAA
 AGAAAGATTCTTCACTGAGGAGGAGAATGGAGTTCCAATTGCCCGGGCTGTTCTTGTGACATGGAACCC
 AAAGTTATCAATCAAATGCTGTCAAAGGCTGCCAGTCTGGCCAATGAAATATGGTCAACATGCATGCT
 TCTGTCAAAAACAAGTTCTGGAAAACACTGGGCATATGGTTACTCTGTTTATGACATGACATGGAAGA
 ATCTATAATGAACATAATCCGGAAGGAAGTGGAGAAATGTGACTCTTTCAGTGGTTTTTTCATCATAATG
 AGTATGGCTGGGGCACAGGATCAGGATTAGGAGCTTTCGTTACACAGAATTTAGAAGATCAGTACTCAA
 ACTCATTGAAAAATGAATCAGATTATTTGGCCTTATGGAAGTGGTGGGTTATTGTTCAAACTACAACCT
 CATTGACACTTCTCACTTGTACCGATCTTCAGACGCCCTCCTCTTCATGAGAATGATGCCATCCAT
 AAGATCTGTGAAAACACTGATGAATATCAAGCAGATCTCCTTTAGTGATATCAATCAAGTCCCTCGCACATC
 AGCTGGGAAGTGTGTTCCAGCCTACTTATTCTGCAGAAAGCTCATTCTACAGACGAAATCCACTAGG
 AGACTTAATGGAGCATTTAGTTCCTCCTGAATTCAGATGCTGAGTGTTCGTAACATTCCTCACATG
 TCTGAGAATTCATTGGCATAACACACATTTACTTGGGCTGGCCTCCTCAAGCATTGAGACAGATGCTCA
 TTTCTAATGCAAAGATGGAAGAAGGTATTGATAGGCATGTATGGCCTCCTTATCAGGACTTCTCCTCT
 TAGTAAAATGTCTCTCAACAAGGACCTGCATTTAACACTTCCATTGCTAACTTGGTCACTTCTCGTGGG
 AAAGATGTGCAAAGTGCAGATGTGGAGGGATTTAAAGATCCAGCTCTGTATACTTCTGGTGAAGCCTG
 TTAATGCTTTCAACGTGTGGAACCCAGCGGCCCTTAGCAAATATGAGAAGTGCAGTGTGGTGCAG
 CAACAGCCAGTCTTAGTAAAACCACTTGATATGATTGTTGGGAAGGCATGGAATATGTTTGCTTCAAAA
 GCCTACATTCATCAGTACACAAAATTTGGAATCGAAGAAGAGGACTTTTTAGACAGTTTCACGTCATTAG
 AGCAGGTTGTTGCCAGTTACTGTAATCTC

ACGCGTACGCGGCCGCTCGAGCAGAACTCATCTCAGAAGAGGATCTGGCAGCAAATGATATCCTGGATT
 ACAAGGATGACGACGATAAGGTTTAA

Protein Sequence:

>RC220591 representing NM_016261
 Red=Cloning site Green=Tags(s)

MSIVTVQLGQCGNQIGFEVFDALLSDSHSSQGLCSMRENEAYQASCKERFFSEEENGVP IARAVLVDMEP
 KVINQMLSKAAQSGQWKYQHACFCQKQSGSNWAYGYSVHGPRHEESIMNIIRKEVEKDSFSGFFIIM
 SMAGTGSGLGAFVTQNLQYNSLKMNI IWPYGTGEVIVQNYNSILTLSHLYRSSDALLLHENDAIH
 KICAKLMNIKQISFSDINQVLAHQLGVSFQPTYSAESFHYRRNPLGDLMEHLVPHPEFKMLSVRNIPHM
 SENSLAYTTFTWAGLLKHLRQMLISNAKMEEGIDRHVWPPLSGLPPLSKMMLNKDLHFNTSIANLVILRG
 KDVQSADVEGFKDPALYTSWLKPVNAFNVWKTQRAF SKYEKSAVLVSNVQFLVKPLDMIVGKAWNMFASK
 AYIHQYTKFGIEEEDFLDSFTSLEQVVASYCNL

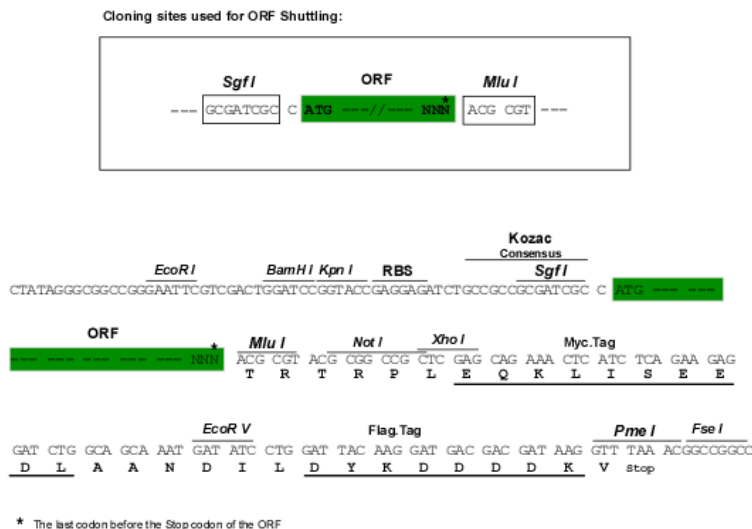
TRTRPLEQKLISEEDLAANDILDYKDDDDKV

Chromatograms:

https://cdn.origene.com/chromatograms/mk8042_c03.zip

Restriction Sites:

Sgfl-Mlul

Cloning Scheme:


ACCN: NM_016261

ORF Size: 1359 bp

OTI Disclaimer: The molecular sequence of this clone aligns with the gene accession number as a point of reference only. However, individual transcript sequences of the same gene can differ through naturally occurring variations (e.g. polymorphisms), each with its own valid existence. This clone is substantially in agreement with the reference, but a complete review of all prevailing variants is recommended prior to use. [More info](#)

OTI Annotation: This clone was engineered to express the complete ORF with an expression tag. Expression varies depending on the nature of the gene.

Components: The ORF clone is ion-exchange column purified and shipped in a 2D barcoded Matrix tube containing 10ug of transfection-ready, dried plasmid DNA (reconstitute with 100 ul of water).

- Reconstitution Method:**
1. Centrifuge at 5,000xg for 5min.
 2. Carefully open the tube and add 100ul of sterile water to dissolve the DNA.
 3. Close the tube and incubate for 10 minutes at room temperature.
 4. Briefly vortex the tube and then do a quick spin (less than 5000xg) to concentrate the liquid at the bottom.
 5. Store the suspended plasmid at -20°C. The DNA is stable for at least one year from date of shipping when stored at -20°C.

RefSeq: [NM_016261.4](#)

RefSeq Size: 2472 bp

RefSeq ORF: 1362 bp

Locus ID: 51174

UniProt ID: [Q9UJT1](#)

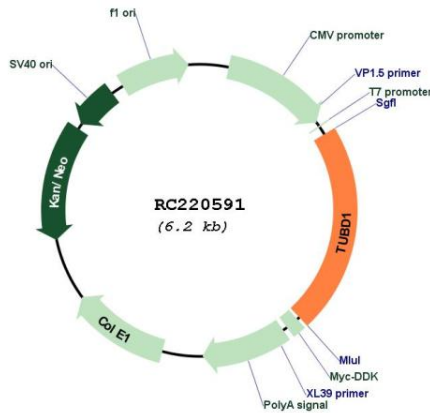
Cytogenetics: 17q23.1

Protein Families: Druggable Genome

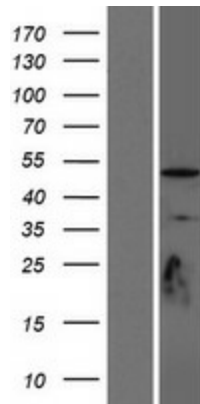
MW: 50.9 kDa

Gene Summary: Acts as a positive regulator of hedgehog signaling and regulates ciliary function. [UniProtKB/Swiss-Prot Function]

Product images:



Circular map for RC220591



Western blot validation of overexpression lysate (Cat# [LY414100]) using anti-DDK antibody (Cat# [TA50011-100]). Left: Cell lysates from untransfected HEK293T cells; Right: Cell lysates from HEK293T cells transfected with RC220591 using transfection reagent MegaTran 2.0 (Cat# [TT210002]).