

## Product datasheet for RC220590

### TATA Element Modulatory Factor 1 (TMF1) (NM\_007114) Human Tagged ORF Clone

#### Product data:

Product Type:	Expression Plasmids
Product Name:	TATA Element Modulatory Factor 1 (TMF1) (NM_007114) Human Tagged ORF Clone
Tag:	Myc-DDK
Symbol:	TATA Element Modulatory Factor 1
Synonyms:	ARA160; TMF
Mammalian Cell Selection:	Neomycin
Vector:	pCMV6-Entry (PS100001)
E. coli Selection:	Kanamycin (25 ug/mL)
ORF Nucleotide Sequence:	>RC220590 ORF sequence Red=Cloning site Blue=ORF Green=Tags(s)

TTTTGTAATACGACTCACTATAGGGCGGCCGGGAATTCGTCGACTGGATCCGGTACCGAGGAGATCTGCC  
GCCCGGATCGCC

ATGAGTTGGTTCAACGCCTCCCAGCTCTCCAGCTTCGCTAAGCAGGCCCTGTCCCAGGCCCAGAAGTCTA  
TTGACAGGGTTCTGGACATCCAGGAAGAGGAGCCGAGCATCTGGGCCGAGACCATTCCGTATGGAGAGCC  
GGGAATAAGTCCCCTGTCAGTGGAGGATGGGATACTTCAACCTGGGGTTGAAATCAAACACTGAACCT  
CAGAGTCCACCAATAGCCTCTCCTAAAGCAATCACAAGCCAGTTCGGAGGACTGTGGTCGATGAATCTG  
AAAATTTCTTCAGTGCCTTTCTCTCGCCAACTGATGTCCAGACCATTGAGAAGTCCAGTGGTATCAAA  
ACCTCCAGCAAAATCACAAACGACCAGAAGAAGTGAAGAAGCAGCTTACATGAATCCTTGACATTGGC  
CAGTCAAGAACTCCTGAAACAATGAATCACAAGTAAAAGACTCTTCTTTGTGTGTTTCAGGGGAAACT  
TGGCAGCAGGTAATTCATCACCTAAAAGTGAAGGCAAGCAGCAAGAAACTGTTAATAAAGAATCGGATAT  
GAAGGTGCCAACTGTAAGTTTGAAGTATCTGAAAGTGAATTTGATGTGAAAACAATATGGAAAGTATA  
TCTAATACGTCTACGCAGTCTCTCACAGCAGAAACAAAGGACATAGCTTTGGAACCTAAGGAACAAAAAC  
ATGAAGACAGGCAGAGCAATACACCTTCTCCTCCTGTTAGTACCTTTTTCATCAGGTAATCTACCACCAG  
TGATATTGAAGTTTTAGATCATGAAAGTGAATAAGTGAAGTCTCAGCGAGCTCGAGACAAGAGACTACA  
GATTCAAAATCAAGTCTTCACTTGATGCAGACATCTTTTCAGCTCTCTGCATCTGCTTGTCTGCTGAAT  
ATAATCGTTTAGATGATTTCCAAAACACTGAGAGTTGCTGTTTCATCTGATGCTTTTGAAGAATAGA  
CTCATTTAGTGTACAGTATTAGATAGCCGGAGTGAAGTGAATCAATTCAGATGATGAATTTGTCAGGC  
AAGGGATATGCTTTAGTGCCTATTATAGTTAATCTTCAACTCCAAAGTCTAAAACAGTTGAATCTGCTG  
AAGGAAAATCTGAAGAAGTAAATGAAACATTAGTTATACCCACTGAGGAAGCAGAAATGGAAGAAAGTGG  
ACGAAGTGCAACTCCTGTTAACTGTGAACGCCTGATATCTTGGTTTCTTCTACACCAATAAATGAAGGA  
CAGACTGTGTTAGACAAGGTGGCTGAGCAGTGTGAACCTGCTGAAAGTCAAGCAGAAAGCACTTTCTGAGA  
AGGAAGATGTTTGAAGACAGTTGAATTTCTGAATGAAAAGCTGGAAAAAAGGGAGGCTCAGTTATTATC  
TCTTAGTAAGGAAAAGCACTTCTAGAAGAAGCTTTTGATAACCTGAAAGATGAAATGTTTCAGAGTGAAA



[View online »](#)

GAAGAAAGCAGTAGCATTCTTCCTTGAAGATGAGTTTACTCAAAGAATTGCAGAAGCAGAAAAGAAAG  
 TTCAACTAGCCTGCAAAGAGAGAGATGCTGCTAAAAAGGAAATCAAAAACATAAAAAGAAGAACTGCCAC  
 TAGATTAATAGTAGTAAAAGCTGCAGACCTTTTAAAAGAGAAAGATGAGCAGATCCGAGGGTTAATGGAA  
 GAAGGAGAAAAAATTTCAAACAGCAGCTGCACAATTCTAACATCATCAAGAAATTAAGAGCTAAAGACA  
 AGGAGAATGAAAATATGGTTGCAAAGCTGAACAAAAAGTTAAAGAGCTAGAAGAGGAGTTGCAGCATT  
 GAAACAGGTCCTTGATGGCAAAGAAGAGGTTGAGAAAACAACATAGAGAAAATATTAAGAACTAAATTC  
 ATGGTAGAACGCCAAGAGAAAGATCTTGGCCGCTTCAGGTAGACATGGATGAACCTGAAGAAAAGAAC  
 GAAGTATTCAGGCTGCCCTGGATAGTGCATACAAAGAACTTACTGATCTTCACAAAGCCAATGCTGCAAA  
 GGATAGTGAGGCACAGGAAGCTGCTCTGAGCCGTGAAATGAAAGCTAAAGAAAGAACTTTCTGCAGCATT  
 GAGAAGGCCCAAGAAGAAGCCCGTCAGCAGCAAGAAACATTAGCCATTCAAGTGGGGGACCTTAGGCTTG  
 CATTGCAGCGTACAGAACAAGCGGCTGCCAGAAAGGAGGATTATTCGCCATGAGATCGGTGAACCTCA  
 GCAGAGACTCCAGGAAGCAGAGAATCGAAACCAGGAAGTGAAGTCAAGTGTTCATCAACAACAAGACCA  
 TTGCTTCGACAAATAGAAAATTTGCAAGCAACCCTGGGATCCCAGACATCGTCTGGGAGAAATAGAGA  
 AGAATCTTCTGATAGGCTTGGTGAATCCAGACCTTCTGCTGCGCAGCAGCTTGAAGAGAACGTCAGC  
 TACAGAAGAACTCCTTGTAACAAAATTCAGATGTCTCCATGGAGTACAGAAATCTCTTTAAGACAG  
 GAAAACAGTAGATTTCAAGCCCAGCTAGAATCAGAGAAAATAGGCTGTGTAACCTGGAGGATGAGAACA  
 ATAGGTACCAGGTTGAATTGAAAACCTAAAAGATGAATATGTAAGAACACTGAAGAGACGAGGAAAGA  
 AAAGACATTGTTGAATAGTCAAGTAAAGATGAAAAGAAAGTGAACAAGAAAGGAAGAAAGCCATT  
 TTTACTCAAGAAACAATAAAAGAAAAGGAACGCAAGCCATTTTCTGTTTCTAGCACTCCCACCATGTCAC  
 GCTCAAGTTCAATAAGTGGTGTGATATGGCAGGACTACAGACATCTTTTCTGTCTCAGGATGAGTCTCA  
 TGATCACTCATTGGACCAATGCCTATATCAGCAAATGGAAGCAATCTTTATGATGCTGTAAGGATGGGA  
 GCAGGATCAAGCATAATTGAAAACCTACAGTCTCAGCTAAAGCTAAGGGAAGGGGAACTCACTCATTAC  
 AGCTAGAAAATGGCAATCTAGAAAAAATCGATCAATAATGGCTGAAGAAGTAAATTAACAATAACA  
 AAATGATGAACCTGAAGAGAAAGGTGAAGGAGATACCCAAACTTGAAGTCAAGTAAAGAGATTTGGATCAA  
 AGGTACAACACTATTCTGCAGATGTATGGAGAAAAGCAGAAGAGGCAGAAGAACTTCGATTAGATCTCG  
 AAGATGTAATAAATATGTACAAAACCTCAATAGATGAACCTTTAAGACAAAGTCTCAGT

ACGCGTACGCGGCCGCTCGAGCAGAACTCATCTCAGAAGAGGATCTGGCAGCAATGATATCCTGGATT  
 ACAAGGATGACGACGATAAGGTTTAA

**Protein Sequence:**

>RC220590 protein sequence  
 Red=Cloning site Green=Tags(s)

MSWFNASQLSSFQKQALSQAQKSIDRVLDIQEEEPSIWAETIPYGEPISSPVSQGGWDTSTWGLKSNTPEP  
 QSPPIASPKAITKPVRRVTVVDESENFSAFLSPTDVQTIQKSPVSKPPAKSQRPEEEVKSSLHESLHIG  
 QSRTPETTESQVKDSSLCVSGETLAAGTSSPKTEGKHEETVNKESDMKVPTVSLKVSESVIDVKTMMESI  
 SNTSTQSLTAETKDIALEPKEQKHEDRQSNTPSPVSTFSSGTSTSDIEVLDHESVISESSASSRQETT  
 DSKSSLHLMQTSFQLLSASACPEYNRLDDFQKLTECCSSDAFERIDFSVQSLDSRSVSEINSDDDEL SG  
 KGYALVPIIVNSSTPKSKTVESAEGKSEEVNETHVIPTEEAEMEESSGRSATPVNCEQPDILVVSSTPINEG  
 QTVLVDKVAEQCEPAESQPEALSEKEDVCKTVEFLNEKLEKREAQLLSLSEKALLEEAFDNLKDEMFVRK  
 EESSISSLSKDEFQRIAEAEKKVQLACKERDAKKEIKNIKEELATRLNSSETADLLKEKDEQIRGLME  
 EGEKLSKQQLHNSNIKKLRAKDKENENMVAKLNKKVKELEELQHLKQVLDGKEEVEKQHRENIKKLNS  
 MVERQEKDLGRLQVDMDELEENRSIQAAALDSAYKELTDLHKANAADSEAQAALSRMKAKEELSAAL  
 EKAQEEARQQETLAIQVGDRLALQRTEQAAARKEDYLRHEIGELQQRLEAENRNQELSQSVSSTTRP  
 LLRQIENLQATLGSQTSWEKLEKNLSDRLGESQTLAAAVRERAAATEELLANKIQMSSMESQNSLLRQ  
 ENSRFQAQLESEKNRLCKLEDENNRYQVELENLKDEYVRTLEETRKEKTLNLSQLEMERMKVEQERKKA  
 FTQETIKEKERKPFVSVSSTPTMSRSSISGVDMAGLQTSFLSQDESHDHSFGPMPISANGSNLYDAVRMG  
 AGSSIIENLQSQLKREGEITHLQLEIGNLEKTRSIMAEELVKLTNQNDELEEKVKEIPKLRTQLRDLQ  
 RYNTILQMYGEKAEAEELRLDLEDVKNMYKTQIDELLRQSL

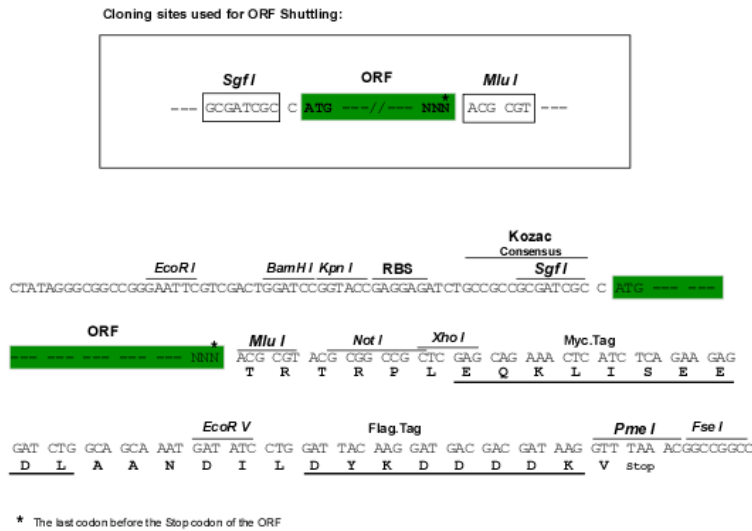
TRTRPLEQKLISEEDLAANDILDYKDDDDKV

**Chromatograms:**

[https://cdn.origene.com/chromatograms/mk6604\\_b06.zip](https://cdn.origene.com/chromatograms/mk6604_b06.zip)

Restriction Sites: SgfI-MluI

Cloning Scheme:



ACCN: NM\_007114

ORF Size: 3279 bp

OTI Disclaimer: The molecular sequence of this clone aligns with the gene accession number as a point of reference only. However, individual transcript sequences of the same gene can differ through naturally occurring variations (e.g. polymorphisms), each with its own valid existence. This clone is substantially in agreement with the reference, but a complete review of all prevailing variants is recommended prior to use. [More info](#)

OTI Annotation: This clone was engineered to express the complete ORF with an expression tag. Expression varies depending on the nature of the gene.

Components: The ORF clone is ion-exchange column purified and shipped in a 2D barcoded Matrix tube containing 10ug of transfection-ready, dried plasmid DNA (reconstitute with 100 ul of water).

Reconstitution Method:

1. Centrifuge at 5,000xg for 5min.
2. Carefully open the tube and add 100ul of sterile water to dissolve the DNA.
3. Close the tube and incubate for 10 minutes at room temperature.
4. Briefly vortex the tube and then do a quick spin (less than 5000xg) to concentrate the liquid at the bottom.
5. Store the suspended plasmid at -20°C. The DNA is stable for at least one year from date of shipping when stored at -20°C.

RefSeq: [NM\\_007114.3](#)

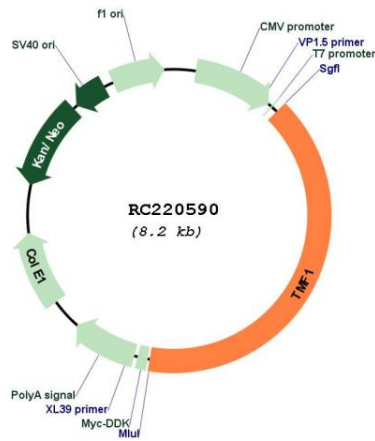
RefSeq Size: 6895 bp

RefSeq ORF: 3282 bp

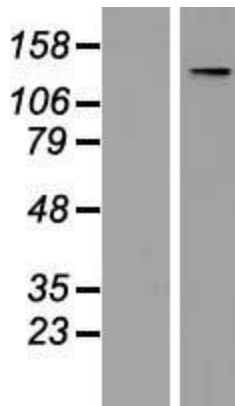
Locus ID: 7110

UniProt ID: [P82094](#)  
 Cytogenetics: 3p14.1  
 Protein Families: Transcription Factors  
 MW: 122.8 kDa  
 Gene Summary: Potential coactivator of the androgen receptor. Mediates STAT3 degradation. May play critical roles in two RAB6-dependent retrograde transport processes: one from endosomes to the Golgi and the other from the Golgi to the ER. This protein binds the HIV-1 TATA element and inhibits transcriptional activation by the TATA-binding protein (TBP).[UniProtKB/Swiss-Prot Function]

**Product images:**



Circular map for RC220590



Western blot validation of overexpression lysate (Cat# [LY416194]) using anti-DDK antibody (Cat# [TA50011-100]). Left: Cell lysates from untransfected HEK293T cells; Right: Cell lysates from HEK293T cells transfected with RC220590 using transfection reagent MegaTran 2.0 (Cat# [TT210002]).