

Product datasheet for **RC220579**

WDR42A (DCAF8) (NM_015726) Human Tagged ORF Clone

Product data:

Product Type:	Expression Plasmids
Product Name:	WDR42A (DCAF8) (NM_015726) Human Tagged ORF Clone
Tag:	Myc-DDK
Symbol:	WDR42A
Synonyms:	GAN2; H326; WDR42A
Mammalian Cell Selection:	Neomycin
Vector:	pCMV6-Entry (PS100001)
E. coli Selection:	Kanamycin (25 ug/mL)



[View online »](#)

ORF Nucleotide Sequence:

>RC220579 ORF sequence
 Red=Cloning site Blue=ORF Green=Tags(s)

TTTTGTAATACGACTCACTATAGGGCGGCCGGAATTCGTCGACTGGATCCGGTACCGAGGAGATCTGCC
 GCC**CGGATCGCC**

ATGTCCAGCAAAGGGAGCAGCACAGATGGCAGAACAGACTTAGCTAATGGAAGCCTGTCTAGCAGTCCAG
 AGGAGATGTCTGGAGCTGAAGAGGGGAGGGAGACATCCTCAGGCATTGAAGTGGAGGCCTCAGACCTGAG
 TTTGAGCTTGACTGGGGATGATGGTGGCCCAACCGCACCAGCACAGAAAAGTCGAGGCACAGACACAGAG
 AGCTCAGGTGAAGATAAGGACTCTGACAGCATGGAGGACTGGTCTTACTCCATTAATGATGAAAATC
 GAGTCCATGACCGCTCAGAGGAAGAGGAAGAGGAGGAAGAAGAGGAGGAAGAAGAGCAGCCTCGGCGCCG
 TGTACAGCGCAAGCGGGCTAACCGTGACCAGGACTCATCAGATGATGAGCGGGCCCTAGAGGACTGGGTG
 TCCTCAGAAAACATCAGCTCTACCCGACCTCGCTGGCAAGCCCTCCCTGCCCTTCGGGAGCGGGAGCTGG
 GTTCAAGTGCCCGCTTTGTCTATGAGGCCTGTGGGCAAGAGTCTTTGTGCAGCGTTCCGCTGCAGCA
 TGGGCTTGAGGGCCATACTGGTTGTGCAATACCTGCACCTTAAACCAGCGCGGCACCTGGCTGGCCAGT
 GGCAGCGATGACCTGAAGGTGGTGGTGTGGGATTGGGTACGGCGGCAGCCAGTACTGGACTTTGAGAGTG
 GCCACAAAAGTAATGTGTTCCAGGCCAAGTTTCTTCTAACAGTGGTGATTCTACTCTGGCCATGTGTGC
 CCGTGACGGGCAGGTTCCAGTAGCAGAAGTGTCTGCCACACAGTGTGCAAGAATACAAAACGTGTGGCC
 CAGCACAAGGGAGCGTCCACAAGTTGGCACTGGAACCAGACTCTCCCTGTACGTTCTTATCTGCAGGTG
 AAGATGCAGTTGTTTTACCATTGACCTGAGACAAGACCGCCAGCGTCGAAACTGGTGGTGACAAAAGA
 GAAAGAGAAGAAAGTGGGGCTGTATACGATCTATGTGAATCCTGCCAATACCCACCAGTTTGCAGTGGGT
 GGACGAGATCAGTTTGAAGGATTTATGACCAGAGGAAAATTGATGAGAATGAGAAACAATGGATACGCA
 AGAAGTTCTGTCTCATCACCTGGTGAACAGTGAGTCCAAAGCAAACATCACCTGTCTTGTGTACGCCA
 CGACGGCACAGAGCTCCTGGCCAGTTACAATGATGAAGACATTTACCTCTTCAACTCCTCTCACAGTGAT
 GGGGCCAGTATGTTAAGAGATAACAAGGCCACAGAAAATAATGCCACAGTAAAAGCGCTCAATTTCTATG
 GCCCAAGAGTGAGTTTGTGGTGAAGCGGTAGTACTGTGGGCACATCTTCTCTGGGAGAAAATCATCCTG
 CCAGATTATTCAGTTCATGGAGGGGACAAGGGAGGCGTGGTAAACTGTCTTGAGCCCCACCCTCACCTG
 CCTGTGCTGGCAACCAGTGGCCTAGACCATGATGTGAAGATCTGGGCACCCACAGCTGAAGCTTCCACTG
 AGCTGACAGGGTAAAAGATGTGATTAAGAAGAACAAGCGGGAGCGGGATGAAGATAGCTGCACCAAAC
 TGACCTGTTTATAGTCACATGCTGTGGTTCCTTATGCATCACCTGAGACAGAGACGCCATACCCGGCGC
 TGGCGAGAACCTGGGGTTGGGGCCACAGACCGGACTCTGATGAGTCTCCAGCTCCTCAGACACATCGG
 ACGAGGAGGAGGGCCCTGACCGGTGCAGTGCATGCCATCT

ACGCGTACGCGGCCGCTCGAGCAGAAAACCTCATCTCAGAAGAGGATCTGGCAGCAAATGATATCCTGGATT
 ACAAGGATGACGACGATAAGGTTTAA

Protein Sequence:

>RC220579 protein sequence
 Red=Cloning site Green=Tags(s)

MSSKGSSTDGRDLANGSLSSSPEEMSGAEEGRETSSGIEVEASDLSLSLTGDDGGPNRTSTESRGTDTE
 SSGEDKSDSMEDTGHYSINDENRVHDRSEEEEEEEEEEQPRRRVQRKRANRDQSSDDERALEDWV
 SSETALPRRWQALPALRERELGSSARFVYACGARVFVQRFRLQHGLEGHTGCVNTLHFNRGTWLAS
 GSDDLKVVVWDWVRRQPVLDFESGHKSNVFAQFLPNSGDSTLAMCARDGQVRVAELSATQCCKNTRVA
 QHKGASHKLALPDSPTFLSAGEDAVVFTIDLQRDPASKLVVTKKEKKVGLYTIYVNPANTHQFVAVG
 GRDQFVRIYDQRKIDENENNGVLKFCPHHLVNSESKANITCLVYSHDGTLLASYNDEDIYLFNSSHSD
 GAQYVKRYKGRNNAVKGVNFYGPKEFVVSQDCGHIFLWEKSSCQIIQFMEDKGGVNCLEPHPHL
 PVLATSGLDHDVKIWAPTAEASTELTGLKDVIKKNREREDSLHQTDLFDHMLWFLMHHLRQRHRHRR
 WREPVGATDADSDESPSSSDTSDEEEGPDRVQCMP

TRTRPLEQKLISEEDLAANDILDYKDDDDKV

Chromatograms:

https://cdn.origene.com/chromatograms/mk6670_b05.zip

Restriction Sites: SgfI-MluI

Cloning Scheme:



ACCN: NM_015726

ORF Size: 1791 bp

OTI Disclaimer: The molecular sequence of this clone aligns with the gene accession number as a point of reference only. However, individual transcript sequences of the same gene can differ through naturally occurring variations (e.g. polymorphisms), each with its own valid existence. This clone is substantially in agreement with the reference, but a complete review of all prevailing variants is recommended prior to use. [More info](#)

OTI Annotation: This clone was engineered to express the complete ORF with an expression tag. Expression varies depending on the nature of the gene.

Components: The ORF clone is ion-exchange column purified and shipped in a 2D barcoded Matrix tube containing 10ug of transfection-ready, dried plasmid DNA (reconstitute with 100 ul of water).

- Reconstitution Method:**
1. Centrifuge at 5,000xg for 5min.
 2. Carefully open the tube and add 100ul of sterile water to dissolve the DNA.
 3. Close the tube and incubate for 10 minutes at room temperature.
 4. Briefly vortex the tube and then do a quick spin (less than 5000xg) to concentrate the liquid at the bottom.
 5. Store the suspended plasmid at -20°C. The DNA is stable for at least one year from date of shipping when stored at -20°C.

RefSeq: [NM_015726.4](#)

RefSeq Size: 3901 bp

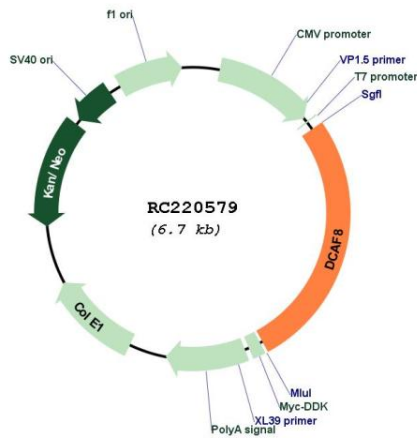
RefSeq ORF: 1794 bp

Locus ID: 50717

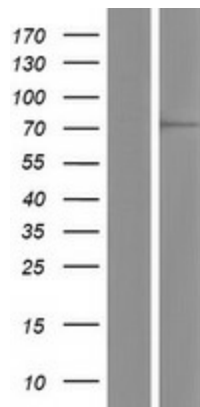
UniProt ID: [Q5TAQ9](#)
Cytogenetics: 1q23.2
Domains: WD40
MW: 66.9 kDa

Gene Summary: This gene encodes a WD repeat-containing protein that interacts with the Cul4-Ddb1 E3 ligase macromolecular complex. Multiple alternatively spliced transcript variants have been found for this gene. [provided by RefSeq, Jul 2009]

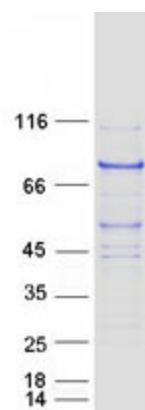
Product images:



Circular map for RC220579



Western blot validation of overexpression lysate (Cat# [LY414360]) using anti-DDK antibody (Cat# [TA50011-100]). Left: Cell lysates from untransfected HEK293T cells; Right: Cell lysates from HEK293T cells transfected with RC220579 using transfection reagent MegaTran 2.0 (Cat# [TT210002]).



Coomassie blue staining of purified DCAF8 protein (Cat# [TP320579]). The protein was produced from HEK293T cells transfected with DCAF8 cDNA clone (Cat# RC220579) using MegaTran 2.0 (Cat# [TT210002]).