

Product datasheet for **RC220573**

CDY2A (NM_004825) Human Tagged ORF Clone

Product data:

Product Type:	Expression Plasmids
Product Name:	CDY2A (NM_004825) Human Tagged ORF Clone
Tag:	Myc-DDK
Symbol:	CDY2A
Synonyms:	CDY; CDY2
Mammalian Cell Selection:	Neomycin
Vector:	pCMV6-Entry (PS100001)
E. coli Selection:	Kanamycin (25 ug/mL)



[View online »](#)

ORF Nucleotide Sequence:

>RC220573 representing NM_004825
 Red=Cloning site Blue=ORF Green=Tags(s)

TTTTGTAATACGACTCACTATAGGGCGGCCGGAATTCGTCGACTGGATCCGGTACCGAGGAGATCTGCC
 GCC**CGCATCGCC**

ATGGCTTCCAGGAGTTTGGAGTTGAAGCTATTGTTGACAAAAGACAGGATAAAAAATGGGAATACACAGT
 ATTTGGTTCGGTGAAAAGTTATGACAAACAGGATGACACTTGGGAACCAGAGCAGCACCTCATGAACTG
 TAAAAATGTGTACATGATTTTAAATAGACGACAGACTGAAAAACAGAAAAAAGTACATGGACTACAACC
 AGTAGAATTTTTCAAACAATGCCAGAAGAAGAACTTCCAGATCTACAAAAGCAAATTTCTAAGAACT
 CTCCTAAAACCTCAGTGACTGATAAACACCACAGGTCCAAAACTGCAAGTTATTTGCTGCCAGCAAGAA
 CGTTAGGAGAAAAGGCAGCTTCAACTCTCTCCGACACAAAAGAAATATGGAGATAATAAATCAACTATTGAG
 ACCCTTGACCTGACAGCCCTTTGACCACAAGAAAAGTGTGAGTGGCTTTCAGAAAAGTGGAAAAGTGG
 ACCCTATTGCAGCAGATCAGCAGGACACGGTGGTCTTCAAGGTGACAGAAGGGAACTCCTCCGGGACCC
 TTTGTCACATCCTGGTGCAGAACAGACTGGAATACAGAACAAGACTCAGATGCACCCACTAATGTGCGCAG
 ATGTCTGGCTCAGTTACTGCTTCTATGGCCACAGGTTCCAGTACCCGAAAAGGGTATAGTGGTATTATAG
 ACCCATTAGCAGCCAATGGGACAACAGACATGCATACCTCAGTTCCAAGAGTGAAGGTGGGCAAGAAA
 TATTACTGATGACAGCAGAGGCCAGCCTTTTATCAAGAAGATGCACTTACCATAAGGCTAACAGAAAGT
 GCCATCACATACAGAGACATTGTAGTGAAGAAAGAGGATGGATTACCCAGATAGTGCTATCAACTAGAT
 CGACAGAAAAAATGCACTGAATACAGAAGTAATTAAGAAAATGGTTAATGCTCTGAATAGCGCTGCTGC
 AGATGACAGCAAGCTCGTGTCTCAGTGCAGCTGGAAGTGTCTTTGCTGCGGTCTTGATTTTGGGTAC
 TTTGTGAGGCACCTAAGGAATGACAGAAACACAGCAAGCCTTGAATGGTGGACACCATCAAGAAGTTG
 TGAATACTTTTATTCAATTTAAAAAGCCTATTGTTGATCAGTCAATGGCCCTGCCATTGGACTAGTGTG
 ATCCATCCTGCCTCTTTGTGATCTCGTGTGGGCTAATGAAAAGGCTTGGTTCCAACCCCTTATACGACC
 TTTGGACAGAGTCCAGATGGCTGTTCTTATTACATTCCCAAAAATGATGGGTAAAGCATCTGCCAATG
 AAATGTTAATGTGCGGCAAGCTGACAGCACGGGAGGCATGCGCCAAAGGCTGGTCTCTCAGGTATT
 TTTGACTGGAACCTTACCACAAGAGTTATGATTCAAATTAAGGAGCTTGCCTCATACAATGCAATTGTA
 CTGGAAGAATGTAAGGCCCTCGTTCGCTGTAATATTAAGTTGGAGTTGGAACAGGCCAATGAGAGAGAGT
 GTGAGGTGCTGAGGAAGATCTGGAGCTCAGCCCAAGGGATAGAATCCATGTTAAAGTATGTTGAAAATAA
 AATTGATGAGTTT

ACGCGTACGCGGCCGCTCGAGCAGAAACTCATCTCAGAAGAGGATCTGGCAGCAAATGATATCCTGGATT
 ACAAGGATGACGACGATAAGGTTTAA

Protein Sequence:

>RC220573 representing NM_004825
 Red=Cloning site Green=Tags(s)

MASQEFVEVAIVDKRQDKNGNTQYLVRWKGYDKQDDTWEPEQHLMNCEKCVHDFNRRQTEKQKLTWTTT
 SRIFSNNARRRTRSSTKANYSKNSPKTPVTDKHHRSKNCKLFAASKNVRRAASTLSDTKNMEIINSTIE
 TLAPDSPFDHKKTVSGFQKLEKLDPIAADQDDTVVFKVTEGKLLRDPLSHPGAEQTGIQNKTMHPLMSQ
 MSGSVTASMATGSATRKGIVVLIDPLAANGTDMHTSVPRVKGGQRNITDSDSRGQPFIKKMHFTIRLTES
 AITYRDIIVKKEDGFTQIVLSTRSTEKNALNTEVIKEMVNALNSAAADDSKLVLSAAGSVFCCGLDFGY
 FVRHLRNRNTASLEMVDTIKNFVNTFIQFKKPIVVSVNGPAIGLGASILPLCDLVWANEKAWFQTPYTT
 FGQSPDGCSSITFPKMMGKASANEMLIAGRKLTAAREACAKGLVSQVFLTGFTTQEVMIQIKELASYNIAIV
 LEECKALVRCNIKLELEQANERECEVLRKIWSSAQGIESMLKYVENKIDEF

TRTRPLEQKLISEEDLAANDILDYKDDDDKV

Chromatograms:

https://cdn.origene.com/chromatograms/ja1409_c12.zip

Restriction Sites:

Sgfl-MluI

Cloning Scheme:


ACCN: NM_004825

ORF Size: 1623 bp

OTI Disclaimer: The molecular sequence of this clone aligns with the gene accession number as a point of reference only. However, individual transcript sequences of the same gene can differ through naturally occurring variations (e.g. polymorphisms), each with its own valid existence. This clone is substantially in agreement with the reference, but a complete review of all prevailing variants is recommended prior to use. [More info](#)

OTI Annotation: This clone was engineered to express the complete ORF with an expression tag. Expression varies depending on the nature of the gene.

Components: The ORF clone is ion-exchange column purified and shipped in a 2D barcoded Matrix tube containing 10ug of transfection-ready, dried plasmid DNA (reconstitute with 100 ul of water).

- Reconstitution Method:**
1. Centrifuge at 5,000xg for 5min.
 2. Carefully open the tube and add 100ul of sterile water to dissolve the DNA.
 3. Close the tube and incubate for 10 minutes at room temperature.
 4. Briefly vortex the tube and then do a quick spin (less than 5000xg) to concentrate the liquid at the bottom.
 5. Store the suspended plasmid at -20°C. The DNA is stable for at least one year from date of shipping when stored at -20°C.

RefSeq: [NM_004825.2](#), [NP_004816.1](#)

RefSeq Size: 1960 bp

RefSeq ORF: 1626 bp

Locus ID: 9426

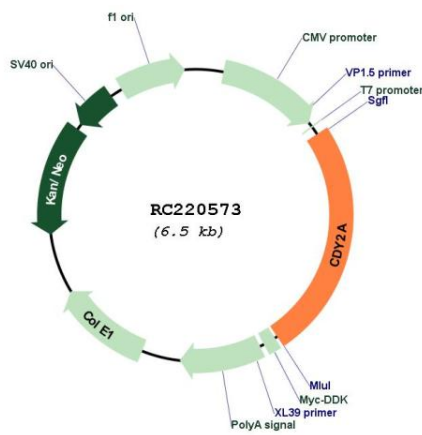
UniProt ID: [Q9Y6F7](#)

Cytogenetics: Yq11.222

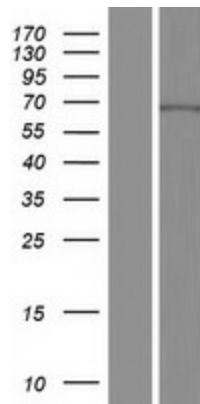
MW: 60.3 kDa

Gene Summary: This intronless gene encodes a protein containing a chromodomain and a histone acetyltransferase catalytic domain. Chromodomain proteins are components of heterochromatin-like complexes and can act as gene repressors. This protein is localized to the nucleus of late spermatids where histone hyperacetylation takes place. Histone hyperacetylation is thought to facilitate the transition in which protamines replace histones as the major DNA-packaging protein. Two nearly identical copies of this gene are found in a palindromic region on chromosome Y; this record represents the telomeric copy. Chromosome Y also contains a pair of closely related genes in another more telomeric palindrome as well as several related pseudogenes. [provided by RefSeq, Jul 2008]

Product images:



Circular map for RC220573



Western blot validation of overexpression lysate (Cat# [LY417713]) using anti-DDK antibody (Cat# [TA50011-100]). Left: Cell lysates from untransfected HEK293T cells; Right: Cell lysates from HEK293T cells transfected with RC220573 using transfection reagent MegaTran 2.0 (Cat# [TT210002]).