

Product datasheet for RC220571

SULT1C3 (NM_001008743) Human Tagged ORF Clone

Product data:

Product Type:	Expression Plasmids
Product Name:	SULT1C3 (NM_001008743) Human Tagged ORF Clone
Tag:	Myc-DDK
Symbol:	SULT1C3
Synonyms:	ST1C3
Mammalian Cell Selection:	Neomycin
Vector:	pCMV6-Entry (PS100001)
E. coli Selection:	Kanamycin (25 ug/mL)
ORF Nucleotide Sequence:	>RC220571 representing NM_001008743 Red=Cloning site Blue=ORF Green=Tags(s)

TTTTGTAATACGACTCACTATAGGGCGGCCGGAATTCGTCGACTGGATCCGGTACCGAGGAGATCTGCC
GCC**CGATCGCC**

ATGGCGAAGATTGAGAAAAACGCTCCCACGATGGAAAAAGCCAGAAGTGTAAACATCATGGAAGTAG
ATGGAGTCCCTACGTTGATATTATCAAAGAATGGTGGGAAAAAGTATGTAATTTCCAAGCCAAGCCTGA
TGATCTTATTCTGGCACTTACCCAAAGTCAGGTACAACATGGATGCATGAAATTTAGACATGATTCTA
AATGATGGTGATGTGGAGAAATGCAAAAGAGCCAGACTCTAGATAGACACGCTTTCCTGAACTGAAAT
TTCCCATAAAGAAAAACAGATTTGGAGTTCGTTCTTGAAATGCCTCACCACAAGTATAAAAAACACA
TCTCCCTTACATCTGATCCACCATCTATCTGGAAAGAAAAGTCAAGATTGTCTATGTGCCAGAAAT
CCCAAGGATTGCCTGGTGTCTACTACCACTTTCACAGGATGGCTTCTTTATGCCTGATCCTCAGAACT
TAGAGGAATTTTATGAGAAATTCATGTCCGGAAAAGTTGTTGGCGGGTCTGTTTGACCATGTGAAAGG
ATGGTGGGCTGCAAAAGACATGCACCGGATCCTCTACCTTCTACGAGGATATTAAGAAAGACCCAAAG
CGGAAATTGAGAAGATACTGAAGTTCCTGAAAAAGACATATCAGAGGAAATTCGAATAAAATCATCT
ATCACACCTCCTTTGATGTAATGAAGCAAAACCAATGACCAACTATACCACTTTGCCACCAGCATTAT
GGACCACTCCATCTCCCCTTTTATGAGGAAAGGGATGCCTGGAGACTGGAAGAAGTATTTACTGTGCC
CAAAATGAAGAATTTGACAAGGACTACCAGAAGAAGATGGCAGGAAGCACCTAACCTTCGCACAGAGA
TC

ACGCGTACGCGGCCGCTCGAGCAGAAACTCATCTCAGAAGAGGATCTGGCAGCAATGATATCCTGGATT
ACAAGGATGACGACGATAAGGTTTAA



[View online »](#)

Protein Sequence: >RC220571 representing NM_001008743
Red=Cloning site Green=Tags(s)

MAKIEKNAPTMEKKPEL FNIMEVDGVPTL ILSKEWWEKVCNFQAKPDDL I LATYPKSGTTWMHEILDMIL
 NDGDVEKCKRAQTLDRHAFLELKFPHKEKPDLEFVLEMSSPQLIKTHLPSHLIPPSIWKENCKIVYVARN
 PKDCLVSYHYHFRMASFMPDPQNLEEFYEKFMSSGKVVGGSWFDHVKGWAAKDMHRILYLFYEDIKKDPK
 REIEKILKFLEKDISEEILNKIIYHTSFDVMKQNPMTNYTTLPTSIMDHSISPFMRKGMPPGDWKNYFTVA
 QNEEFDKDYQKKMAGSTLTFRTEI

TRTRPLEQKLISEEDLAANDILDYKDDDDKV

Chromatograms: https://cdn.origene.com/chromatograms/mk8041_h07.zip

Restriction Sites: SgfI-MluI

Cloning Scheme:

Cloning sites used for ORF Shuttling:



* The last codon before the Stop codon of the ORF

ACCN: NM_001008743

ORF Size: 912 bp

OTI Disclaimer: The molecular sequence of this clone aligns with the gene accession number as a point of reference only. However, individual transcript sequences of the same gene can differ through naturally occurring variations (e.g. polymorphisms), each with its own valid existence. This clone is substantially in agreement with the reference, but a complete review of all prevailing variants is recommended prior to use. [More info](#)

OTI Annotation: This clone was engineered to express the complete ORF with an expression tag. Expression varies depending on the nature of the gene.

Components: The ORF clone is ion-exchange column purified and shipped in a 2D barcoded Matrix tube containing 10ug of transfection-ready, dried plasmid DNA (reconstitute with 100 ul of water).

Reconstitution Method:

1. Centrifuge at 5,000xg for 5min.
2. Carefully open the tube and add 100ul of sterile water to dissolve the DNA.
3. Close the tube and incubate for 10 minutes at room temperature.
4. Briefly vortex the tube and then do a quick spin (less than 5000xg) to concentrate the liquid at the bottom.
5. Store the suspended plasmid at -20°C. The DNA is stable for at least one year from date of shipping when stored at -20°C.

RefSeq: [NM_001008743.3](#)

RefSeq Size: 915 bp

RefSeq ORF: 915 bp

Locus ID: 442038

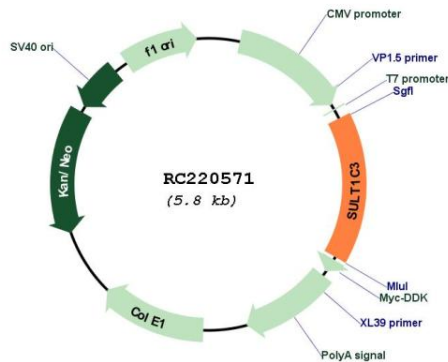
UniProt ID: [Q6IMI6](#)

Cytogenetics: 2q12.3

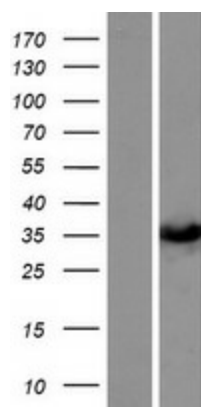
MW: 35.7 kDa

Gene Summary: Sulfotransferase that utilizes 3'-phospho-5'-adenylyl sulfate (PAPS) as sulfonate donor and has low sulphotransferase activity towards various substrates with alcohol groups (in vitro). May catalyze the sulfate conjugation of xenobiotic compounds and endogenous substrates. [UniProtKB/Swiss-Prot Function]

Product images:



Circular map for RC220571



Western blot validation of overexpression lysate (Cat# [LY423369]) using anti-DDK antibody (Cat# [TA50011-100]). Left: Cell lysates from untransfected HEK293T cells; Right: Cell lysates from HEK293T cells transfected with RC220571 using transfection reagent MegaTran 2.0 (Cat# [TT210002]).